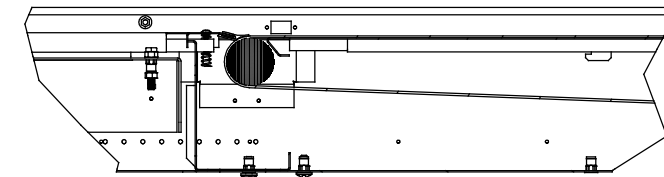
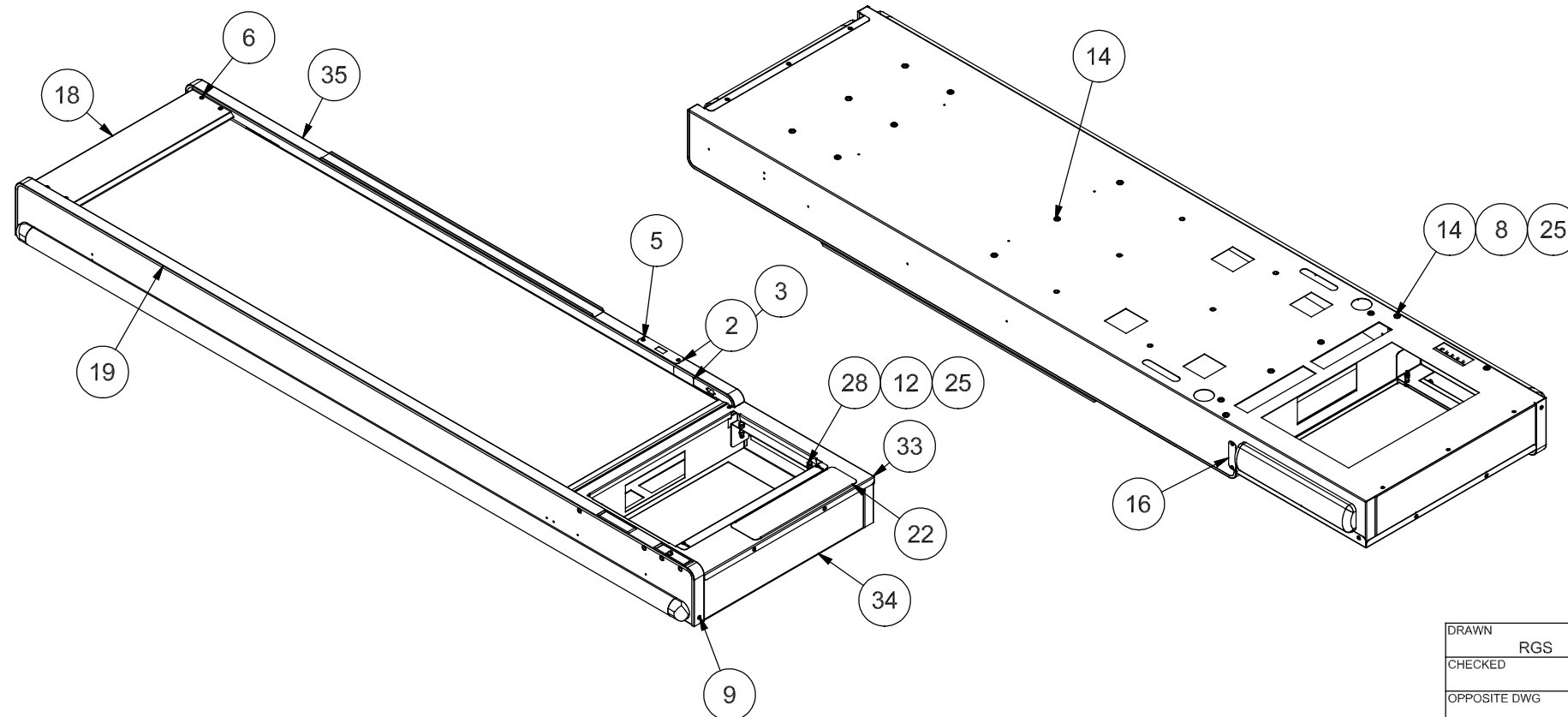
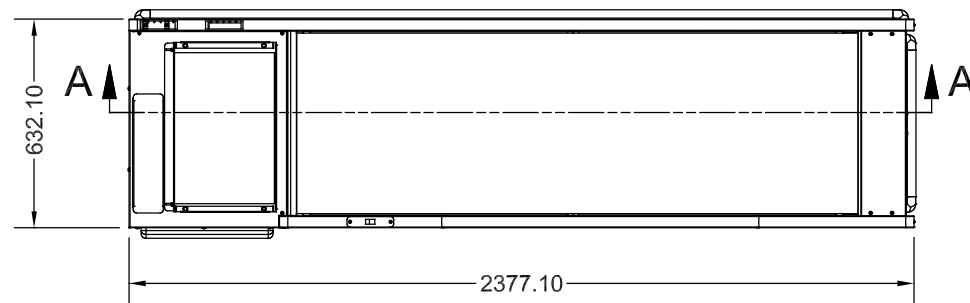
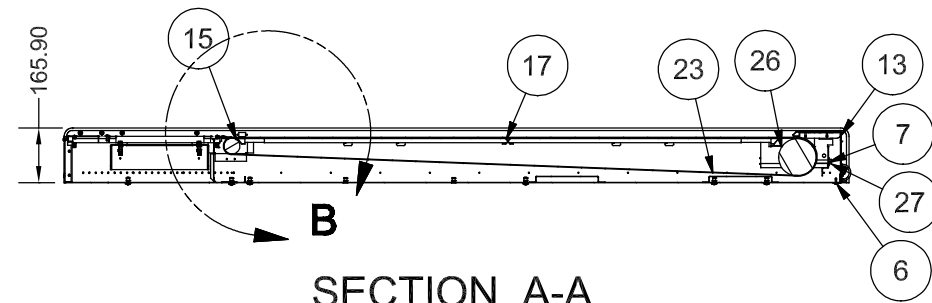


REVISION HISTORY			
REV	DESCRIPTION	DATE	APPROVED
3	DCR#0900292	1/21/2010	DAS



DETAIL B

Parts List			
ITEM	PART NUMBER	QTY	DESCRIPTION
1	105155	2	SPACER, IDLER (ABS)
2	108441	1	Switch Cover Plate
3	12131	1	Label, Keep Hands Off Belt
5	23222	4	#8 x 1/2" SELF DRILL SCREW
6	3724	32	TAP SCREW, #8 X 5/8
7	3749	2	Washer, 3/8" Nom. flat
8	3756	16	Washer, flat, 1/4" SAE/Nom
9	3760	3	Rivet, Large 4.9
10	3761	2	RIVET, SHORT 3.26
11	3770	6	Plastic, Wire Latching Clip#LC5-A-C8
12	3803	8	Nut, 1/4-20 Hex (Zinc)
13	3921	1	Label, Generic, Pan-Oston
14	4001	16	MACH. SCREW, 1/4-20 X 3/4
15	49205-550	1	FLAT IDLER, 1.9" 550mm
16	500365	1	COVER, IDLER ADJUST
17	500366	2	Support, Belt
18	500367	1	NOSE PLATE
19	500376	1	TRIM, TOP
20	53207-2249	1	Bumper, 2" Rigid, Black #401
21	53207-444	1	Bumper, 2" Rigid, Black #401
22	59710	1	FILLER, SENSORMATIC
23	601-201	1	Belt, Endless 546mm X 3716mm Wal-Mart
24	62485	1	Screw, Cap 4" X 5/16"
25	64448	34	RIVET, 1/4-20 HEXHD RIVNUT
26	652-550D	1	MOTOR, 22" CONVEYOR
27	7206	2	SCREW, CAP 3/8-16x4" HEX FULL
28	7506	4	1/4-20 Hex Bolt 1 1/2" ALL THREAD
29	78786-2300	1	Mounting Track, McCue Gen Flex
30	78786-495	1	Mounting Track, 2" McCue Gen Flex
31	78787-H	4	End Cap, 2" Flex, Black, McCue
33	BM-48161	1	SCAN KIT, NCR 7870/7875
34	BM-58420	1	Mig, Conv. Assy
35	BM-58423	1	SPOT, NEXT CUST TRACK
36	BM-9304	2	BRACKET, MOTOR ASM.
90	BM-48160	1	Sub, Padded Rail Assembly

DRAWN RGS	12/18/2008	ALL DIMENSIONS ARE IN MILLIMETERS, ANSI Y14.5 ST. STL. PARTS PAPERSIDE UP UNLESS OTHERWISE NOTED	FIRST ANGLE PROJ.
CHECKED		DESCRIPTION: <b>Assy, 8' LH Conveyor</b>	
OPPOSITE DWG		MATERIAL	DWG NO <b>BM-56317-LH</b>
REFERENCE DWG BM-58085		TITLE: Reddy	REV <b>3</b>
PAINT ZONE			SHEET 1 OF 1

The contents of this drawing are the exclusive property of Pan-Oston, and are for the use of the customer for whom they were created. Any reproduction or disclosure thereof without the written consent of Pan-Oston, is strictly prohibited.

