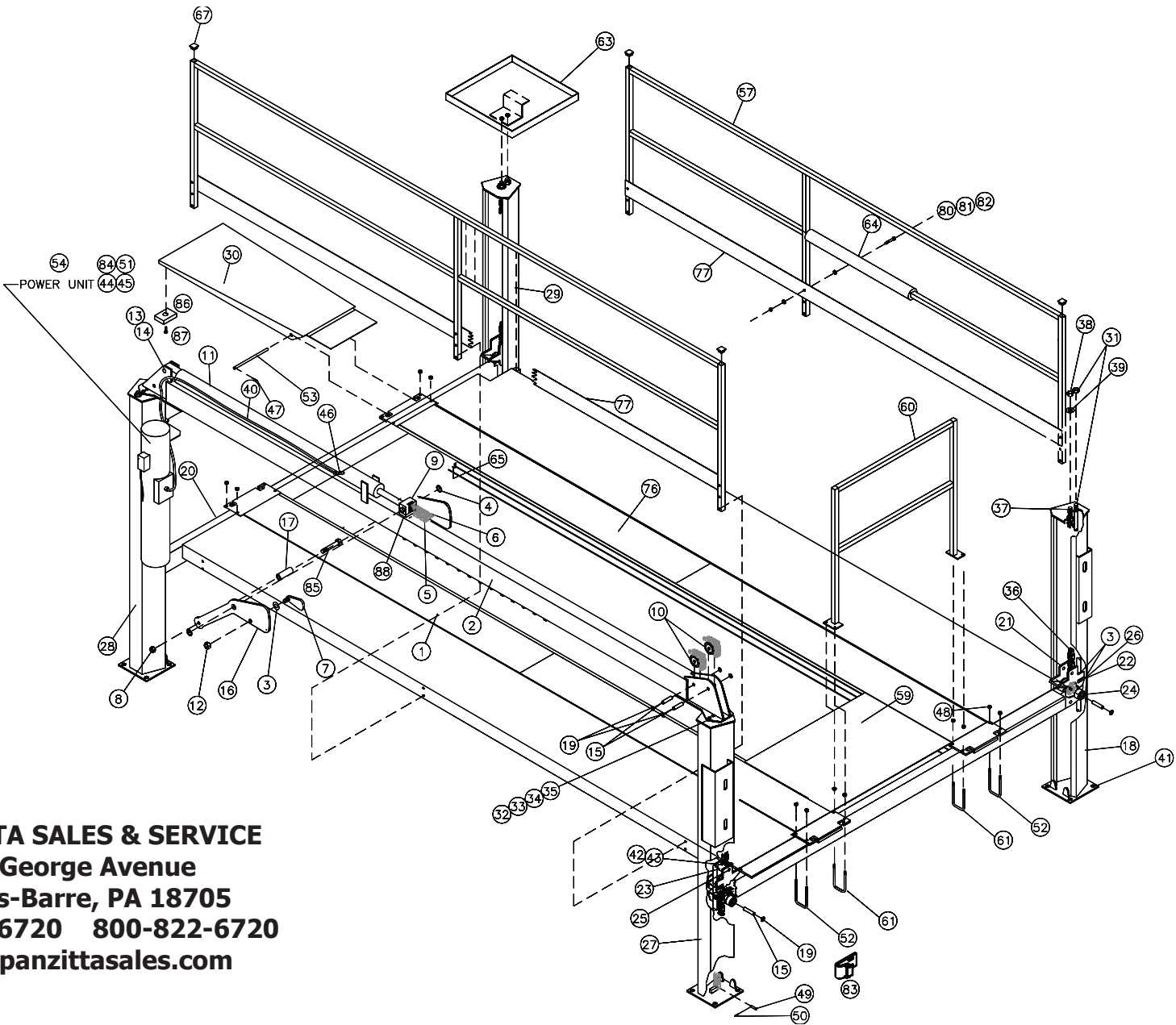


Parts Breakdown



PANZITTA SALES & SERVICE
72 George Avenue
Wilkes-Barre, PA 18705
570-822-6720 800-822-6720
www.panzittasales.com

Model 24012MLR
Installation, Operation and Maintenance

Ref	Qty	Description	Part Number	Ref	Qty	Description	Part Number
1	1	R.H. Runway & Ext. Weld	651-40-1240	46	2	90 Deg Elbow	312-02-0104
2	1	Overhead Beam Weld	651-40-1246	47	4	Cotter Pin	315-02-0002
3	16	Flat Washer	320-03-0057	48	8	Jam Nut	314-04-0023
4	2	Retainer Ring	317-01-0011	49	4	Headed Pin	443-02-0874
5	1	Long Lift Chain	443-02-1633	50	4	Cotter Pin	315-02-0021
6	1	Short Lift Chain	443-02-1634	51	4	Flat washer	320-03-0035
7	1	Latch Release Weld	651-40-0410	52	4	U-Bolt	443-02-0875
8	2	Lock Nut	314-03-0059	53	4	Ramp Mount Pin	443-02-0914
9	2	Dowell Pin	315-03-0008	54	1	Power Unit	24081-4hp
10	3	Sheave Ass'y Overhead	443-40-0810	55			
11	1	4 Post Cylinder	591-01-1620	56			
12	2	Lock Nut	314-03-0075	57	2	Side Rail Weld	651-40-1251
13	2	Cotter Pin	315-02-0020	58			
14	1	Cylinder Mount Pin	443-02-0879	59	1	Center Cover Weld	651-40-1409
15	5	Sheave Pin	651-40-0409	60	1	Front Rail	651-40-1259
16	2	Latch Plate	651-40-0572	61	2	U-Bolt	443-02-1653
17	1	Lock Pin	651-40-1034	62	1	Air Supply Ass'y (Not Shown)	651-40-1426
18	1	L.H. Front Post Weld, Catwalk	651-40-1265	63	1	Vacuum Holder	651-40-1266
19	22	Retainer Ring	317-01-0012	64	2	Buffer	443-02-1659
20	2	Crossbeam Weld	651-40-0827	65	4	H.H. Bolt	302-02-0179
21	4	Latch Weld	651-40-0416	66			
22	4	Spring	429-02-0039	67	6	Square Tube Cap	443-02-0867
23	2	Lock Block	443-02-0977	68	8	H.H. Bolt	302-02-0179
24	4	Sheave Ass'y, Crossbeam	443-40-0811	69			
25	6	Latch Pin	651-40-0419	70			
26	4	Actuator Plate	443-02-1706	71			
27	1	R.H. Front Post Weld, Catwalk	651-40-1264	72			
28	1	R.H. Rear Post Weld, P.U.	651-40-0422	73			
29	2	L.H. Rear Post Weld	651-40-2423	74			
30	4	Ramp Weld	651-40-1254	75			
31	4	Safety Rod Ass'y	651-40-0424	76	1	L.H. Runway/Walk Weld	651-40-1241
32	18	Hex Head Bolt	302-02-0123	77	2	Toe Plate, Long	651-40-1252
33	36	Flat Washer	320-03-0052	78			
34	18	Lock Washer	320-04-0007	79			
35	18	Hex Nut	314-02-0012	80	18	H.H. Bolt	302-02-0183
36	2	Crossbeam Chain	443-02-1082	81	18	Locknut	314-03-0042
37	2	Threaded End	443-02-0862	82	24	Flatwasher	320-03-0039
38	2	Lock Nut	314-03-0021	83	1	Anti-Sway Kit	651-40-0779
39	2	Flat Washer	320-03-0024	84	1	Return Line Kit	651-40-0972
40	1	Hose Ass'y	651-40-0428	85	1	Bolt	302-02-1326
41	16	Anchor Bolt Ass'y	302-15-0002	86	1	UHMW Block	443-02-1326
42	2	Lock Nut	314-03-0050	87	4	Screw	319-21-0006
43	2	Shoulder Bolt	319-22-0015	88	4	UHMW Block	443-02-1325
44	4	Nylon Lock Nut	314-03-0083				
45	4	Hex Head Bolt	302-02-0115				

PANZITTA SALES & SERVICE
72 George Avenue
Wilkes-Barre, PA 18705
570-822-6720 800-822-6720
www.panzittasales.com

PANZITTA SALES & SERVICE
72 George Avenue
Wilkes-Barre, PA 18705
570-822-6720 800-822-6720
www.panzittasales.com

Model 24012MLR
Installation, Operation and Maintenance

