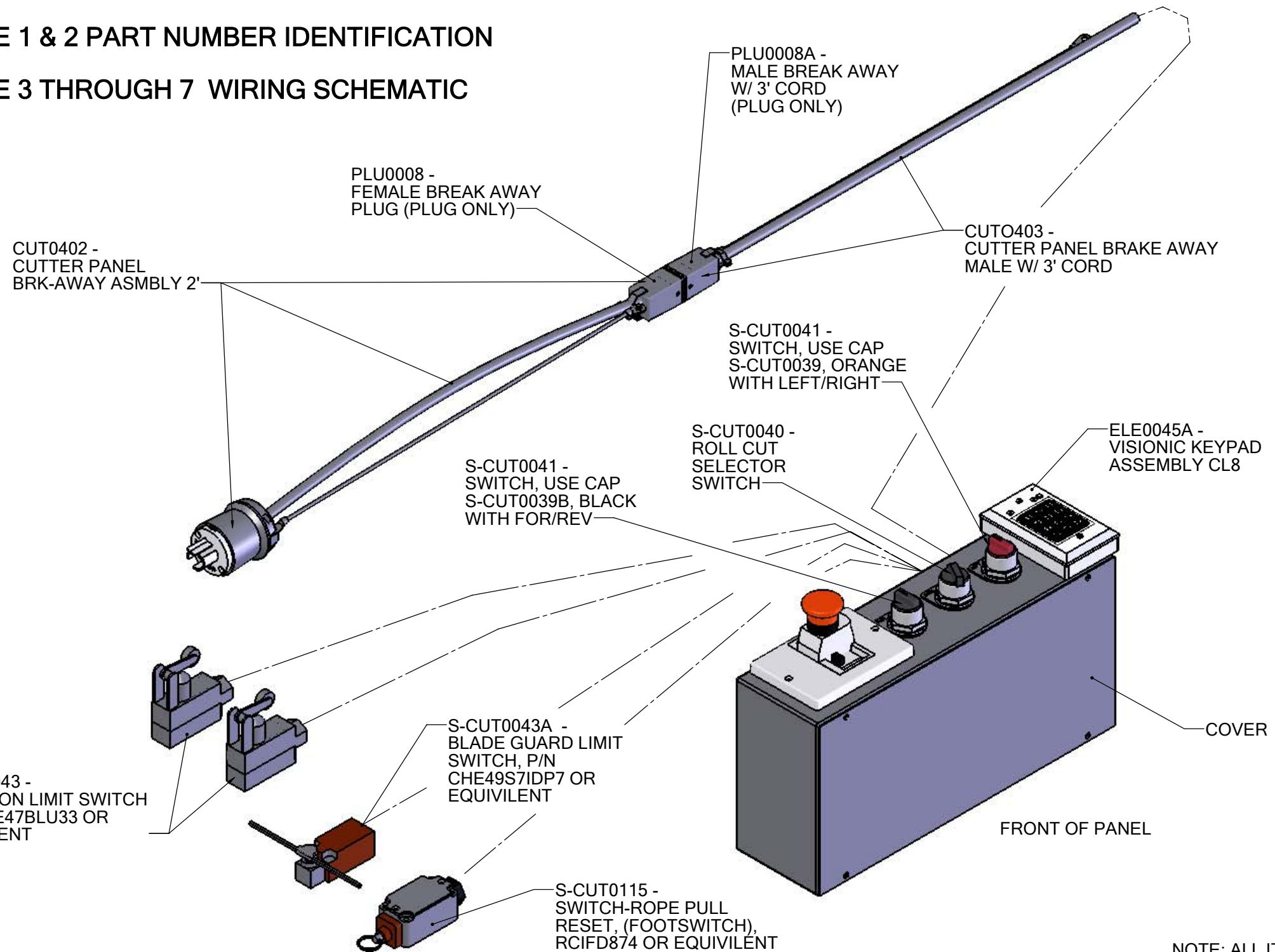


CUT0401A - J&D CUTTER CONTROLS

PAGE 1 & 2 PART NUMBER IDENTIFICATION

PAGE 3 THROUGH 7 WIRING SCHEMATIC

REVISIONS						
ERN	ZONE	REV	DESCRIPTION	DATE	BY	APV



NOTE: ALL ITEMS ARE WIRED INTO THE CONTROL PANEL, REAR SIDE, THROUGH A STAIN RELIEF.

PROPRIETARY AND CONFIDENTIAL INFORMATION
 THIS DRAWING AND THE SUBJECT MATTER CONTAINED THEREIN ARE AND SHALL AT ALL TIMES REMAIN THE SOLE AND EXCLUSIVE PROPERTY OF J&D ASSOCIATES, A DIVISION OF UNITED FIXTURES COMPANY, WHICH RESERVES ALL RIGHTS TO THE DESIGN, DRAWING, AND SUBJECT MATTER CONTAINED THEREIN. THIS COPY IS LOANED SUBJECT TO THE AGREEMENT AND ON THE CONDITION THAT IT SHALL NOT BE USED FOR ANY PURPOSES OTHER THAN THE PURPOSE FOR WHICH IT IS LOANED TO THE RECIPIENT; THAT IT SHALL NOT BE USED IN ANY WAY DETRIMENTAL TO THE INTERESTS OF J&D ASSOCIATES; THAT NEITHER IT NOR THE SUBJECT MATTER CONTAINED IN THE DRAWING SHALL BE DISCLOSED, IN WHOLE OR IN PART, TO ANY OTHER PARTY; THAT IT SHALL NOT BE COPIED IN ANY FORM, NOR IN ANY WAY DISSEMINATED WITHOUT THE PRIOR EXPRESS WRITTEN PERMISSION OF J&D ASSOCIATES; AND THAT IT SHALL BE RETURNED PROMPTLY TO J&D ASSOCIATES UPON REQUEST. ACCEPTANCE OF THIS DRAWING SHALL BE CONSIDERED AS ACCEPTANCE OF ALL THE FOREGOING CONDITIONS.

DO NOT SCALE DRAWING IF IN DOUBT, ASK	DIMENSIONS ARE INCHES UNLESS OTHERWISE SPECIFIED	MAT'L SPEC. NO. CRS/HRS
UNLESS OTHERWISE SPECIFIED, UNIFIED THREADS SHALL BE CLASS 2A (EXTERNAL) OR CLASS 2B (INTERNAL)	TOLERANCES UNLESS OTHERWISE SPECIFIED	3RD ANGLE PROJECTION
FRACTIONAL	± 1/16	APPROVALS
2 PLACE DECIMAL	± .06	DATE
3 PLACE DECIMAL	± .03	DRAWN TGB 4/21/2009
ANGULAR DIMENSION	± 1°	CHECKED * 4/21/2009
N/A TO MATERIAL THICKNESS		APPROVED * 4/21/2009

J&D ASSOCIATES A DIVISION OF UNITED FIXTURES COMPANY			
TITLE CUTTER CONTROLS			
SIZE C	ERN *	FIG. NO. CUT0401A~Service	REV
SCALE 1:12	WEIGHT 33.99#	SHEET 1 OF 7	

CUT0401A - INTERNAL COMPONENTS IDENTIFICATION

ELE0134 - ABB
ELE0134A - TELE
ESTOP PUSH
BUTTON

ELE0012 -
MOTOR STARTER
COVER & HOUSING

CUT0038B -
OVERLOAD,
MANUAL STARTER
1.6 AMP

ELE0012 -
MOTOR STARTER
COVER & HOUSING

SHEET METAL BOX

REVERSING CONTACTOR
ELE0013

DESCRIBED ON
PAGE 1

LEGEND
PLATE

S-CUT0042
T2 CONTACT
BLOCK
10250T2

ELE0020 -
T3 CONTACT
BLOCK
10250T3

ELE0021A -
DIN-RAIL

CUT0055 -
TIMER,
(MAINBODY)

S-CUT0087
TIMER BASE

UNDERSIDE, KEYPAD MAIN BODY

ELE0045A -
KEYPAD, CL8

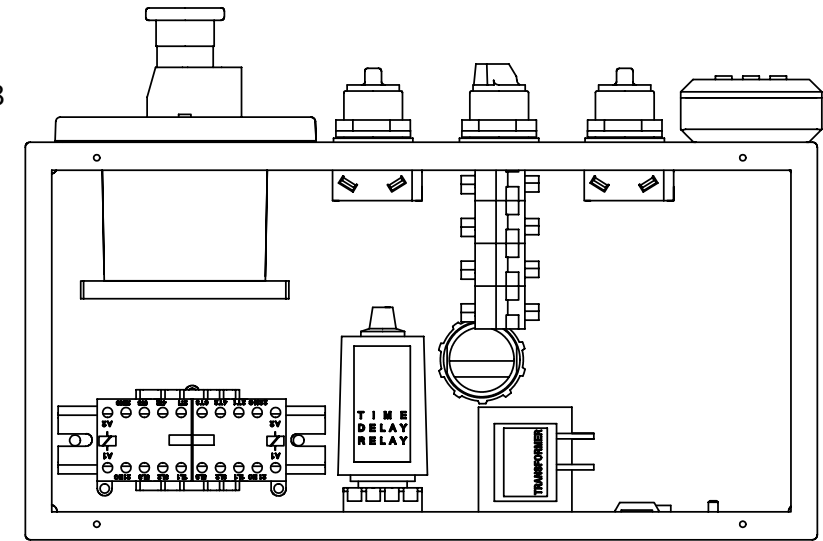
WELDED
GROUND STUD,
CONNECT ALL
GROUND WIRES
HERE

ELE0025C -
240V TO 24V
TRANSFORMER

OPEN END
TERMINAL
14GA

ELE0026
TERMINAL STRIP

SUBPLATE



VIEW LOOKING DIRECTLY INTO
CONTROL PANEL, RIGHT SIDE
OF CUTTER

PROPRIETARY AND CONFIDENTIAL INFORMATION
THIS DRAWING AND THE SUBJECT MATTER CONTAINED THEREIN ARE AND SHALL AT ALL TIMES REMAIN THE SOLE AND EXCLUSIVE PROPERTY OF J&D ASSOCIATES, A DIVISION OF UNITED FIXTURES COMPANY, WHICH RESERVES ALL RIGHTS TO THE DESIGN, DRAWING AND SUBJECT MATTER CONTAINED THEREIN. THIS COPY IS LOANED SUBJECT TO THE AGREEMENT AND ON THE CONDITION THAT IT SHALL NOT BE USED FOR ANY PURPOSES OTHER THAN THE PURPOSE FOR WHICH IT IS LOANED TO THE RECIPIENT; THAT IT SHALL NOT BE USED IN ANY WAY DETRIMENTAL TO THE INTERESTS OF J&D ASSOCIATES; THAT WHETHER OR NOT THE SUBJECT MATTER CONTAINED IN THE DRAWING SHALL BE INCORPORATED IN WHOLE OR IN PART, TO ANY OTHER PARTY; THAT IT SHALL NOT BE COPIED IN ANY FORM, NOR IN ANY WAY DISSEMINATED WITHOUT THE PRIOR EXPRESS WRITTEN PERMISSION OF J&D ASSOCIATES; AND THAT IT SHALL BE RETURNED PROMPTLY TO J&D ASSOCIATES UPON REQUEST. ACCEPTANCE OF THIS DRAWING SHALL BE CONSIDERED AS ACCEPTANCE OF ALL THE FOREGOING CONDITIONS.

DO NOT SCALE DRAWING IF IN DOUBT, ASK	DIMENSIONS ARE INCHES UNLESS OTHERWISE SPECIFIED	MAT'L SPEC. NO. CRS/HRS
UNLESS OTHERWISE SPECIFIED, UNIFIED THREADS SHALL BE CLASS 2A (EXTERNAL) OR CLASS 2B (INTERNAL)	TOLERANCES UNLESS OTHERWISE SPECIFIED	3RD ANGLE PROJECTION
	FRACTIONAL ± 1/16	APPROVALS
	2 PLACE DECIMAL ± .06	DATE
	3 PLACE DECIMAL ± .03	DRAWN TGB 4/21/2009
REMOVE ALL BURRS AND SHARP EDGES	ANGULAR DIMENSION ± 1°	CHECKED * 4/21/2009
	N/A TO MATERIAL THICKNESS	APPROVED * 4/21/2009

J&D ASSOCIATES A DIVISION OF UNITED FIXTURES COMPANY	
TITLE CUTTER CONTROLS	
SIZE C	ERN *
SCALE 1:12	WEIGHT 24.45#
REV CUT0401A~Service	SHEET 2 OF 7

CUT0401A - WIRING SCHEMATIC, EXTERNAL PANEL ITEMS

WIRE ROUTING:

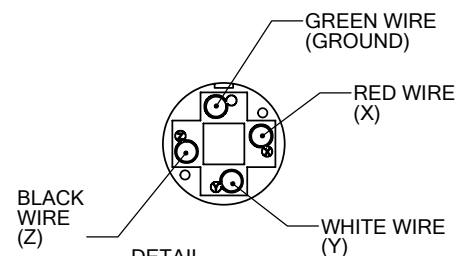
LIMIT SWITCH CABLES
 B1 CONNECTS TO NO.-14 OF THE FOR REV SWITCH CONTACT BLOCK
 W1 CONNECTS TO NO.-14 OF THE LEFT RIGHT SWITCH CONTACT BLOCK
 B2 CONNECTS TO NO.-24 OF THE FOR REV SWITCH CONTACT BLOCK
 W2 CONNECTS TO NO.-24 OF THE LEFT RIGHT SWITCH CONTACT BLOCK

BLADE GUARD SWITCH CABLE
 B4 CONNECTS TO NO.-13 OF THE LEFT RIGHT SWITCH CONTACT BLOCK
 W4 CONNECTS TO NO.-24 OF THE ROLL CUT SWITCH CONTACT BLOCK

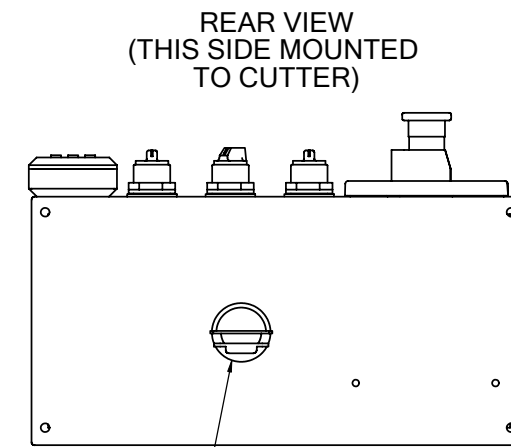
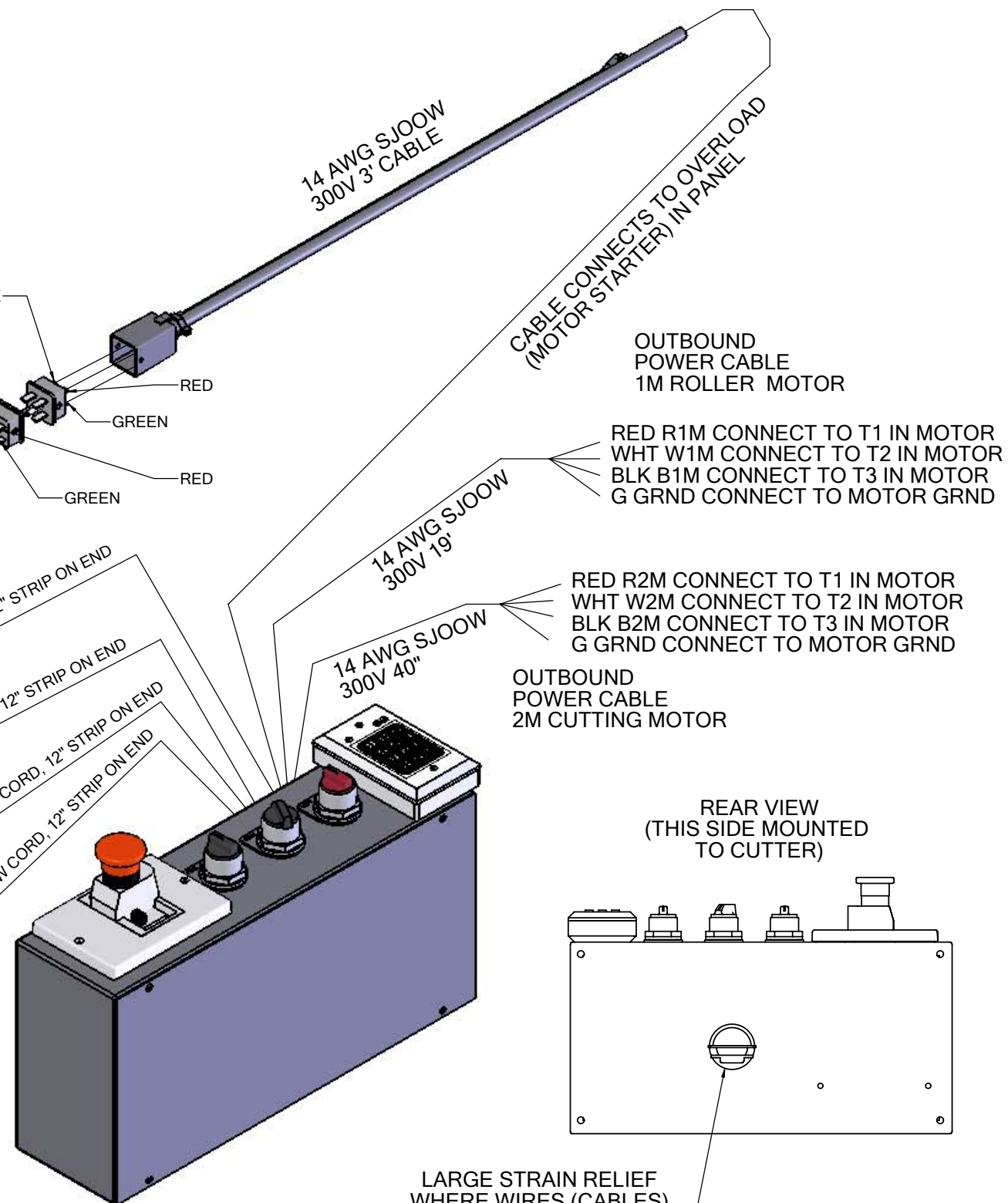
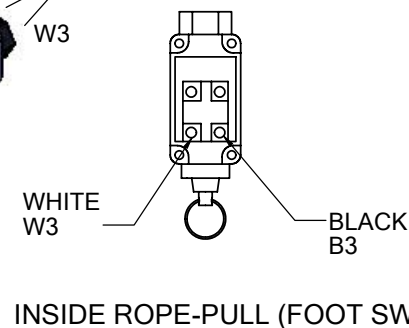
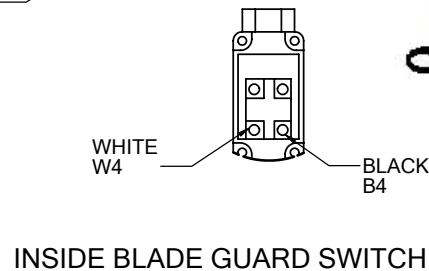
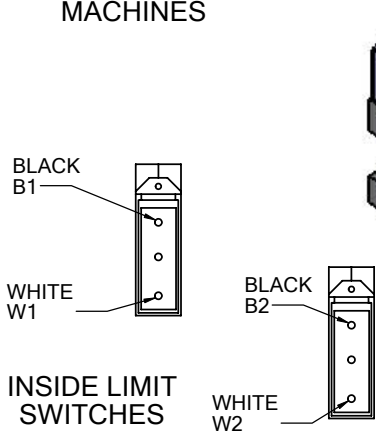
FOOT SWITCH CABLE
 B3 CONNECTS TO A1 OF THE REVERSING CONTACTOR
 W3 CONNECTS TO -22 OF THE ROLL CUT SWITCH BLOCK
 T3, RIGHT SIDE, BOTTOM BLOCK

INCOMING POWER CABLE
 RED CONNECTS TO L1 OF THE OVERLOAD MOTOR STARTER
 WHITE CONNECTS TO L2 OF THE OVERLOAD MOTOR STARTER
 BLACK CONNECTS TO L3 OF THE OVERLOAD MOTOR STARTER
 GREEN CONNECTS TO GROUND

NOTE:
 MAINTAIN LIKE COLORS
 ACROSS BOTH PLUGS.



SUPPLIED
 208V-240V POWER
 FROM CAROUSEL
 MACHINES



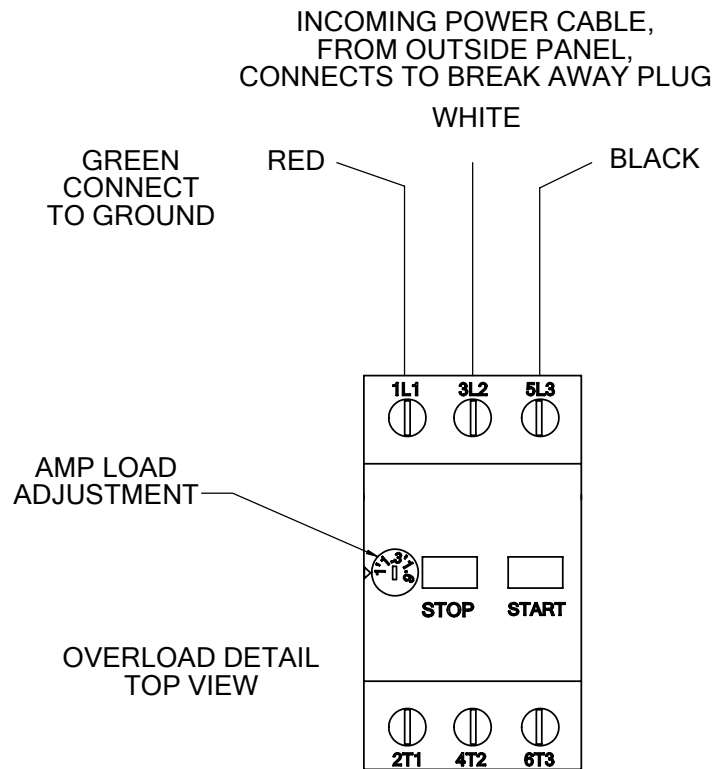
LARGE STRAIN RELIEF
 WHERE WIRES (CABLES)
 ENTERS PANEL

PROPRIETARY AND CONFIDENTIAL INFORMATION
 THIS DRAWING AND THE SUBJECT MATTER CONTAINED THEREIN ARE AND SHALL BE THE PROPERTY OF J&D ASSOCIATES, A DIVISION OF UNITED FIXTURES COMPANY, WHICH RESERVES ALL RIGHTS TO THE DESIGN, DRAWING AND SUBJECT MATTER CONTAINED THEREIN. THIS COPY IS LOANED SUBJECT TO THE AGREEMENT AND ON THE CONDITION THAT IT SHALL NOT BE USED FOR ANY PURPOSES OTHER THAN THE PURPOSE FOR WHICH IT IS LOANED TO THE RECIPIENT; THAT IT SHALL NOT BE USED IN ANY WAY DETRIMENTAL TO THE INTERESTS OF J&D ASSOCIATES; THAT NEITHER IT NOR THE SUBJECT MATTER CONTAINED IN THE DRAWING SHALL BE DISSEMINATED, IN WHOLE OR IN PART, TO ANY OTHER PARTY; THAT IT SHALL NOT BE COPIED IN ANY FORM, NOR IN ANY WAY DISSEMINATED WITHOUT THE PRIOR EXPRESS WRITTEN PERMISSION OF J&D ASSOCIATES; AND THAT IT SHALL BE RETURNED PROMPTLY TO J&D ASSOCIATES UPON REQUEST. ACCEPTANCE OF THIS DRAWING SHALL BE CONSIDERED AS ACCEPTANCE OF ALL THE FOREGOING CONDITIONS.

DO NOT SCALE DRAWING IF IN DOUBT, ASK	DIMENSIONS ARE INCHES UNLESS OTHERWISE SPECIFIED	MAT'L SPEC. NO. CRS/HRS
UNLESS OTHERWISE SPECIFIED, UNIFIED THREADS SHALL BE CLASS 2A (EXTERNAL) OR CLASS 2B (INTERNAL)	TOLERANCES UNLESS OTHERWISE SPECIFIED	3RD ANGLE PROJECTION
	FRACTIONAL ± 1/16	APPROVALS DATE
	2 PLACE DECIMAL ± .06	TGB 4/21/2009
	3 PLACE DECIMAL ± .03	CHECKED * 4/21/2009
REMOVE ALL BURRS AND SHARP EDGES	ANGULAR DIMENSION ± 1°	APPROVED * 4/21/2009
	N/A TO MATERIAL THICKNESS	

J&D ASSOCIATES A DIVISION OF UNITED FIXTURES COMPANY	
TITLE CUTTER CONTROLS	
SIZE C	ERN *
SCALE 1:12	WEIGHT 33.99#
SHEET 3 OF 7	

**CUT0401A - WIRING SCHEMATIC, INTERNAL PARTS:
MOTOR STARTER OVERLOAD**

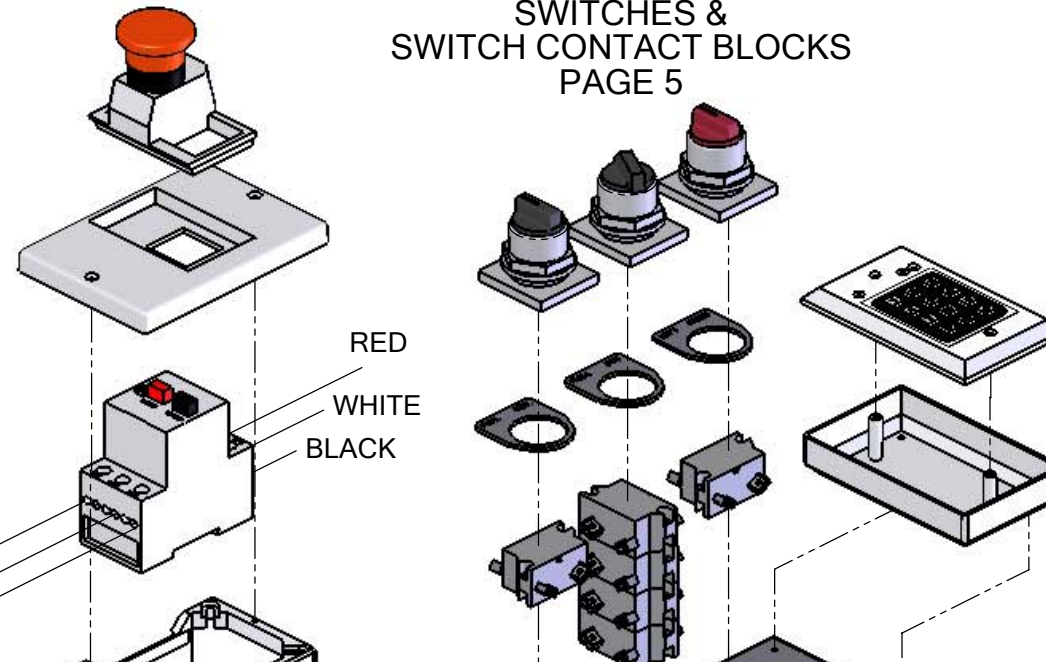


BLACK 1L1
CONNECT TO
1L1 OF REVERSING
CONTACTOR RELAY

BLACK 1L2
CONNECT TO
3L2 OF REVERSING
CONTACTOR RELAY

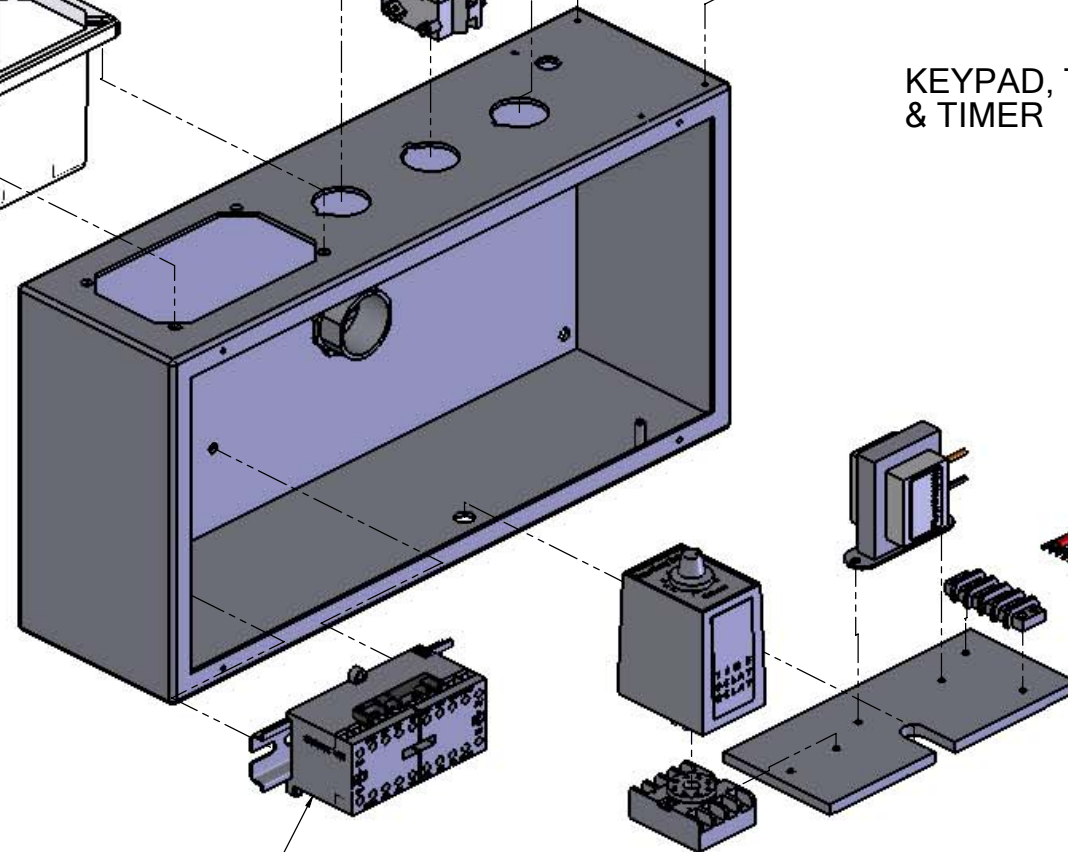
BLACK 1L3
CONNECT TO
5L3 OF REVERSING
CONTACTOR RELAY

**SWITCHES &
SWITCH CONTACT BLOCKS
PAGE 5**



**KEYPAD, TRANSFORMER,
& TIMER PAGE 6**

**REVERSING CONTACT
RELAY PAGE 7**



PROPRIETARY AND CONFIDENTIAL INFORMATION
THIS DRAWING AND THE SUBJECT MATTER CONTAINED THEREIN ARE AND SHALL AT ALL TIMES REMAIN THE SOLE AND EXCLUSIVE PROPERTY OF J&D ASSOCIATES, A DIVISION OF UNITED FIXTURES COMPANY, WHICH RESERVES ALL RIGHTS TO THE DESIGN, DRAWING AND SUBJECT MATTER CONTAINED THEREIN. THIS COPY IS LOANED SUBJECT TO THE AGREEMENT AND ON THE CONDITION THAT IT SHALL NOT BE USED FOR ANY PURPOSES OTHER THAN THE PURPOSE FOR WHICH IT IS LOANED TO THE RECIPIENT; THAT IT SHALL NOT BE USED IN ANY WAY DETRIMENTAL TO THE INTERESTS OF J&D ASSOCIATES; THAT NEITHER IT NOR THE SUBJECT MATTER CONTAINED IN THE DRAWING SHALL BE DISCLOSED, IN WHOLE OR IN PART, TO ANY OTHER PARTY; THAT IT SHALL NOT BE COPIED IN ANY FORM, NOR IN ANY WAY DISSEMINATED WITHOUT THE PRIOR EXPRESS WRITTEN PERMISSION OF J&D ASSOCIATES; AND THAT IT SHALL BE RETURNED PROMPTLY TO J&D ASSOCIATES UPON REQUEST. ACCEPTANCE OF THIS DRAWING SHALL BE CONSIDERED AS ACCEPTANCE OF ALL THE FOREGOING CONDITIONS.

DO NOT SCALE DRAWING IF IN DOUBT, ASK	DIMENSIONS ARE INCHES UNLESS OTHERWISE SPECIFIED	MAT'L SPEC. NO. CRS/HRS	J&D ASSOCIATES A DIVISION OF UNITED FIXTURES COMPANY	
UNLESS OTHERWISE SPECIFIED, UNIFIED THREADS SHALL BE CLASS 2A (EXTERNAL) OR CLASS 2B (INTERNAL)	TOLERANCES UNLESS OTHERWISE SPECIFIED	3RD ANGLE PROJECTION	TITLE CUTTER CONTROLS	
REMOVE ALL BURRS AND SHARP EDGES	FRACTIONAL ± 1/16 2 PLACE DECIMAL ± .06 3 PLACE DECIMAL ± .03 ANGULAR DIMENSION ± 1° N/A TO MATERIAL THICKNESS	APPROVALS DRAWN TGB 4/21/2009 CHECKED * APPROVED * 4/21/2009	DATE 4/21/2009	SCALE C 1:8
			WEIGHT 24.45#	REV CUT0401A~Service SHEET 4 OF 7

4

3

2

1

D

D

C

C

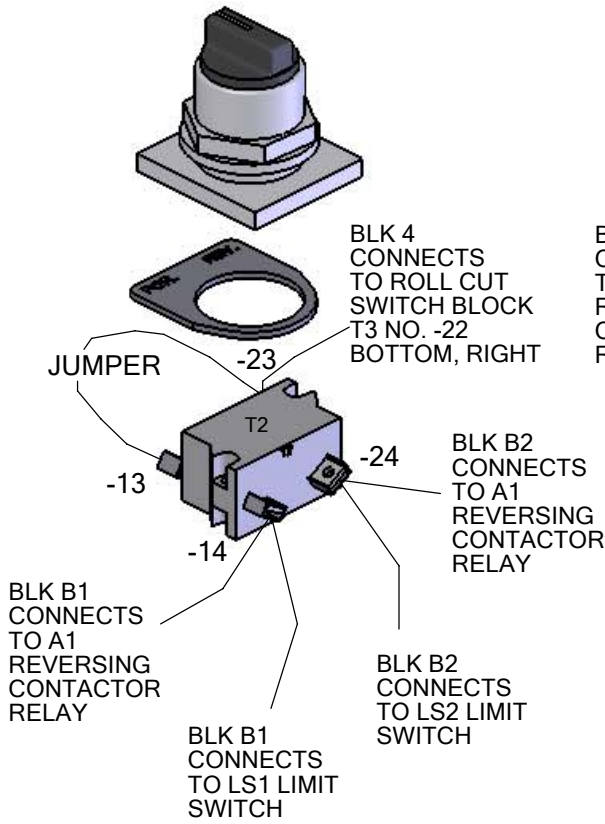
B

B

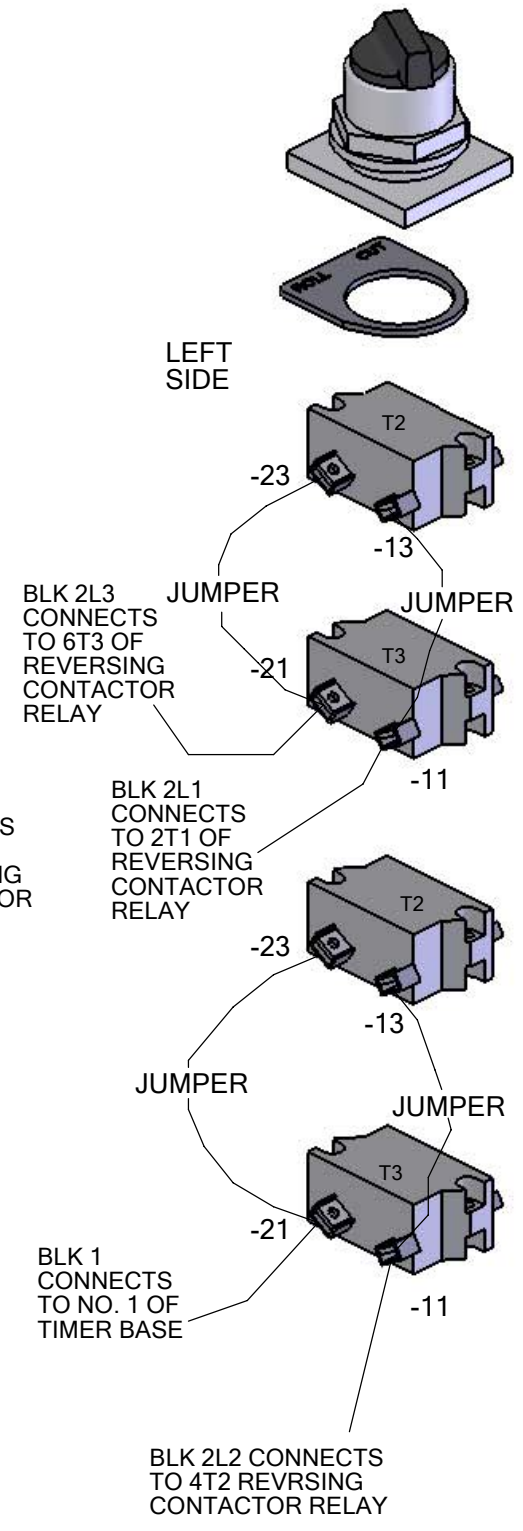
A

A

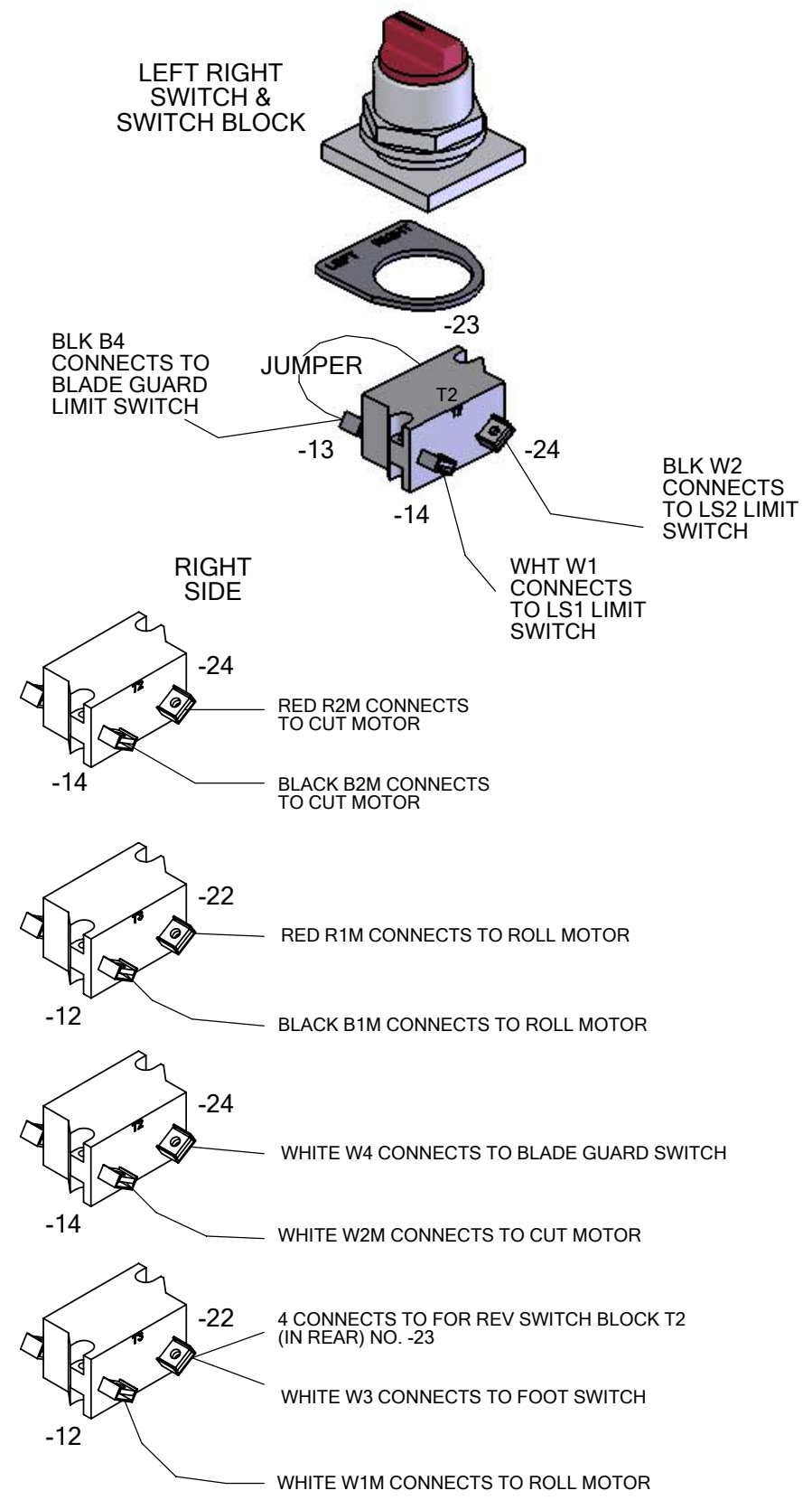
FOR REV SWITCH & SWITCH BLOCK



ROLL CUT SWITCH & SWITCH BLOCKS



LEFT RIGHT SWITCH & SWITCH BLOCK



PROPRIETARY AND CONFIDENTIAL INFORMATION
 THIS DRAWING AND THE SUBJECT MATTER CONTAINED THEREIN ARE AND SHALL AT ALL TIMES REMAIN THE SOLE AND EXCLUSIVE PROPERTY OF J&D ASSOCIATES, A DIVISION OF UNITED FIXTURES COMPANY, WHICH RESERVES ALL RIGHTS TO THE DESIGN, DRAWING AND SUBJECT MATTER CONTAINED THEREIN. THIS COPY IS LOANED SUBJECT TO THE AGREEMENT AND ON THE CONDITION THAT IT SHALL NOT BE USED FOR ANY PURPOSES OTHER THAN THE PURPOSE FOR WHICH IT IS LOANED TO THE RECIPIENT; THAT IT SHALL NOT BE USED IN ANY WAY DETRIMENTAL TO THE INTERESTS OF J&D ASSOCIATES; THAT NEITHER IT NOR THE SUBJECT MATTER CONTAINED IN THE DRAWING SHALL BE DISCLOSED, IN WHOLE OR IN PART, TO ANY OTHER PARTY; THAT IT SHALL NOT BE COPIED IN ANY FORM, NOR IN ANY WAY DISSEMINATED WITHOUT THE PRIOR EXPRESS WRITTEN PERMISSION OF J&D ASSOCIATES; AND THAT IT SHALL BE RETURNED PROMPTLY TO J&D ASSOCIATES UPON REQUEST. ACCEPTANCE OF THIS DRAWING SHALL BE CONSIDERED AS ACCEPTANCE OF ALL THE FOREGOING CONDITIONS.

DO NOT SCALE DRAWING IF IN DOUBT, ASK	DIMENSIONS ARE INCHES UNLESS OTHERWISE SPECIFIED	MAT'L SPEC. NO. CRS/HRS	J&D ASSOCIATES A DIVISION OF UNITED FIXTURES COMPANY	
UNLESS OTHERWISE SPECIFIED, UNIFIED THREADS SHALL BE CLASS 2A (EXTERNAL) OR CLASS 2B (INTERNAL)	TOLERANCES UNLESS OTHERWISE SPECIFIED	3RD ANGLE PROJECTION	TITLE CUTTER CONTROLS	
	FRACTIONAL ± 1/16	APPROVALS DATE	SIZE C	ERN *
REMOVE ALL BURRS AND SHARP EDGES	2 PLACE DECIMAL ± .06	DRAWN TGB 4/21/2009	SCALE 1:2	WEIGHT 4.33#
	3 PLACE DECIMAL ± .03	CHECKED * 4/21/2009	REV	SHEET 5 OF 7
	ANGULAR DIMENSION ± 1°	APPROVED * 4/21/2009	PART NO. CUT0401A~Service	
	N/A TO MATERIAL THICKNESS			

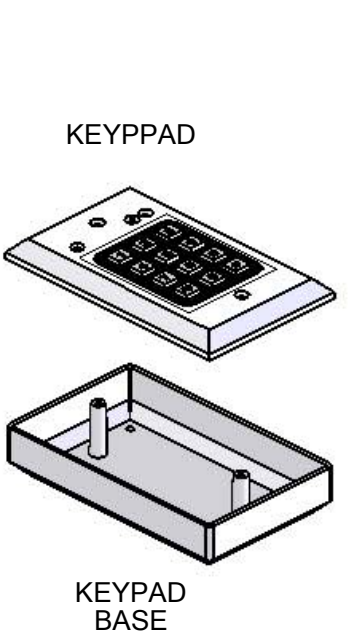
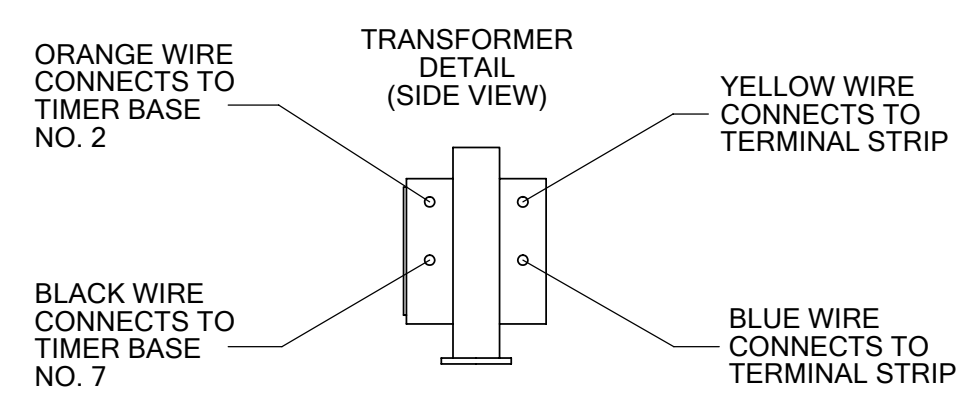
4

3

2

1

4 3 2 1

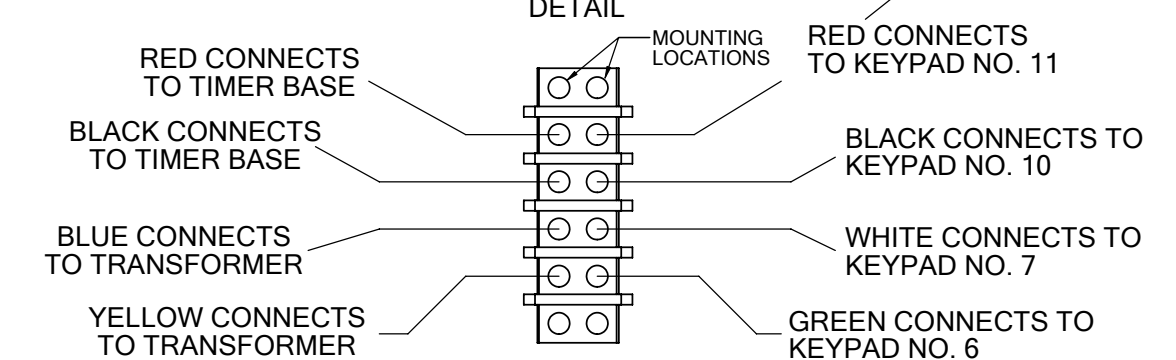
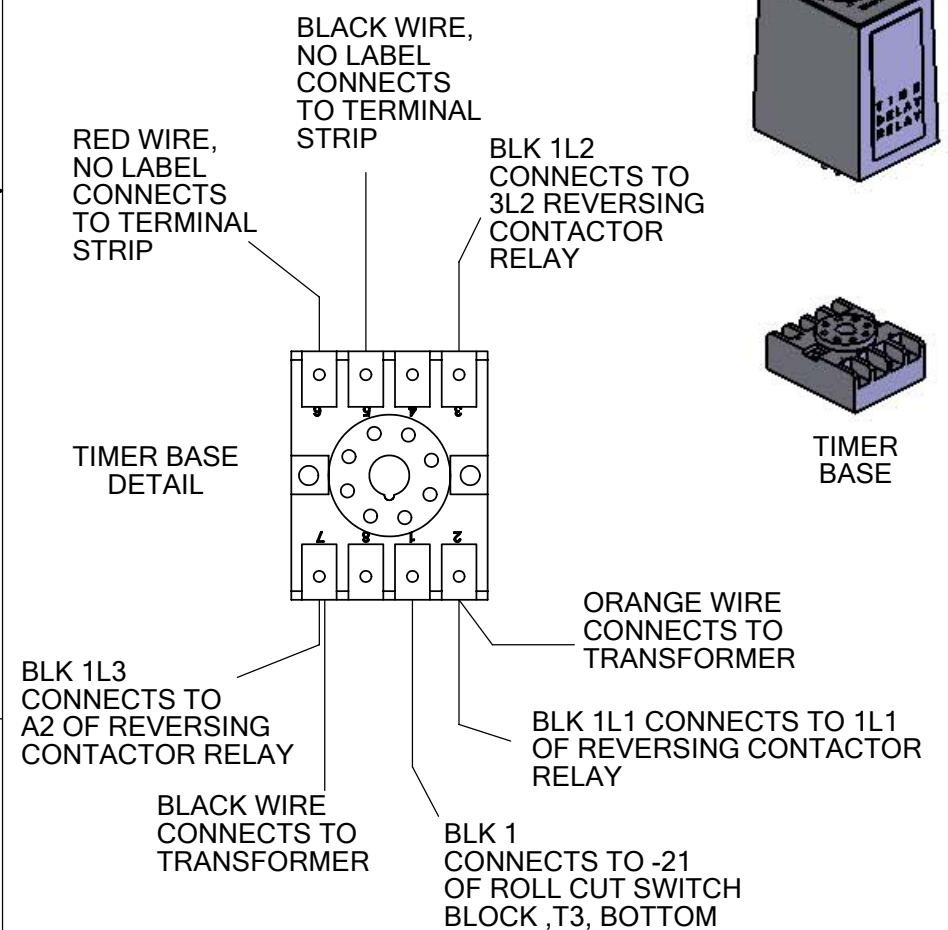
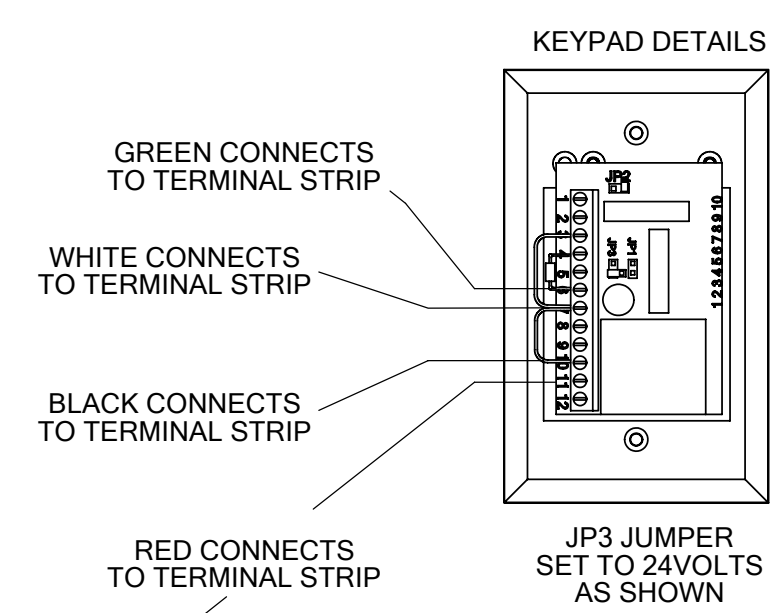
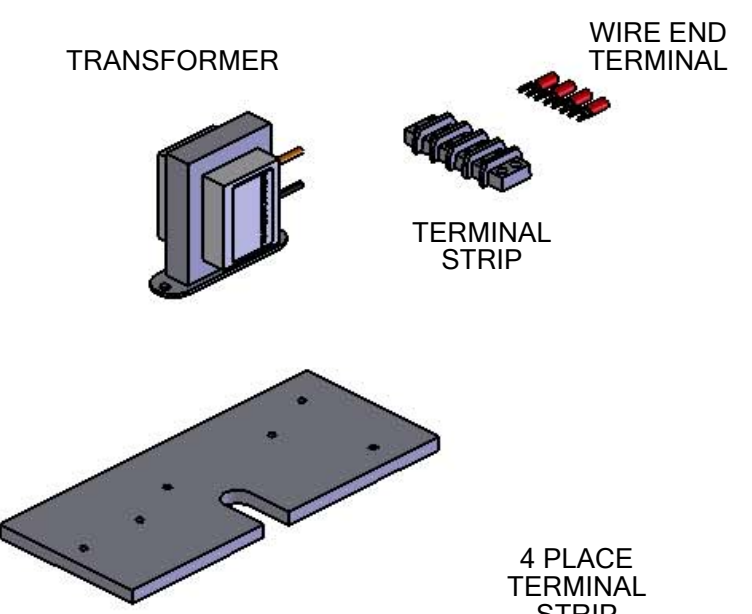
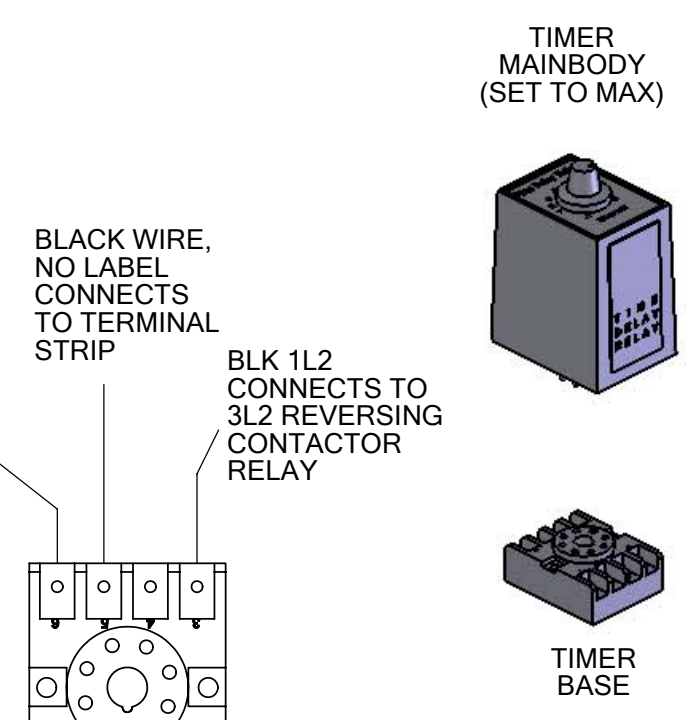
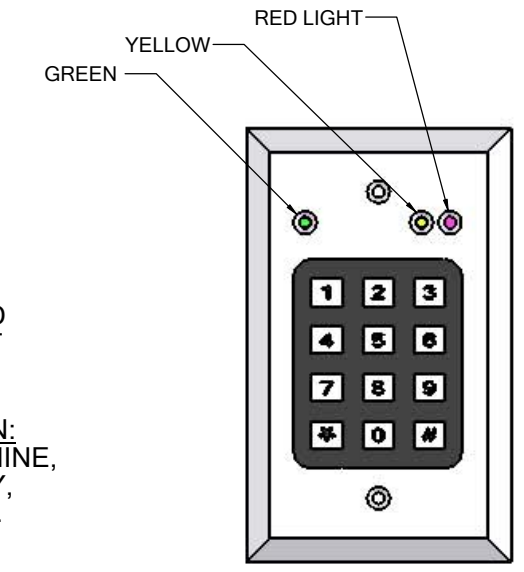


**CODE FOR KEYPAD
IS AS FOLLOWS:
4,3,2,1, #**

**NO LIGHTS:
E-STOP PUSHED IN,
NO POWER PAST THE
OVERLOAD.**

**YELLOW LIGHT ON:
START BUTTON IS ENGAGED
AND POWER (24V) PRESENT
TO THE KEYPAD.**

**YELLOW & GREEN LIGHTS ON:
POWER PRESENT TO THE MACHINE,
CODE PUCHED IN PROPERLY,
MACHINE IS READY TO RUN.**



PROPRIETARY AND CONFIDENTIAL INFORMATION
THIS DRAWING AND THE SUBJECT MATTER CONTAINED THEREIN
ARE AND SHALL AT ALL TIMES REMAIN THE SOLE AND EXCLUSIVE
PROPERTY OF J&D ASSOCIATES, A DIVISION OF UNITED
FIXTURES COMPANY, WHICH RESERVES ALL RIGHTS TO THE
DESIGN, DRAWING AND SUBJECT MATTER CONTAINED THEREIN.
THIS COPY IS LOANED SUBJECT TO THE AGREEMENT AND ON
THE CONDITION THAT IT SHALL NOT BE USED FOR ANY
PURPOSES OTHER THAN THE PURPOSE FOR WHICH IT IS LOANED
TO THE RECIPIENT; THAT IT SHALL NOT BE USED IN ANY WAY
DETIMENTAL TO THE INTERESTS OF J&D ASSOCIATES; THAT
NEITHER IT NOR THE SUBJECT MATTER CONTAINED IN THE
DRAWING SHALL BE REPRODUCED, IN WHOLE OR IN PART, TO ANY
OTHER PARTY; THAT IT SHALL NOT BE COPIED IN ANY FORM,
NOR IN ANY WAY DISSEMINATED WITHOUT THE PRIOR EXPRESS
WRITTEN PERMISSION OF J&D ASSOCIATES; AND THAT IT SHALL
BE RETURNED PROMPTLY TO J&D ASSOCIATES UPON REQUEST.
ACCEPTANCE OF THIS DRAWING SHALL BE CONSIDERED AS
ACCEPTANCE OF ALL THE FOREGOING CONDITIONS.

DO NOT SCALE DRAWING IF IN DOUBT, ASK	DIMENSIONS ARE INCHES UNLESS OTHERWISE SPECIFIED	MAT'L SPEC. NO. CRS/HRS
UNLESS OTHERWISE SPECIFIED, UNIFIED THREADS SHALL BE CLASS 2A (EXTERNAL) OR CLASS 2B (INTERNAL)	TOLERANCES UNLESS OTHERWISE SPECIFIED	3RD ANGLE PROJECTION
	FRACTIONAL ± 1/16	APPROVALS
	2 PLACE DECIMAL ± .06	DATE
	3 PLACE DECIMAL ± .03	DRAWN TGB 4/21/2009
REMOVE ALL BURRS AND SHARP EDGES	ANGULAR DIMENSION ± 1°	CHECKED * 4/21/2009
	N/A TO MATERIAL THICKNESS	APPROVED * 4/21/2009

J&D ASSOCIATES A DIVISION OF UNITED FIXTURES COMPANY	
CUTTER CONTROLS	
SIZE C	ERN * CUT0401A~Service
SCALE 1:2	WEIGHT 6.77#
SHEET 6 OF 7	REV

4 3 2 1

CUT0401A - WIRING SCHEMATIC, INTERNAL PARTS: REVERSING CONTACT RELAY

ALL WIRES CONNECTED TO REVERSING CONTACT RELAY ARE BLACK.
REFER TO LABEL ON WIRE FOR IDENTIFICATION.

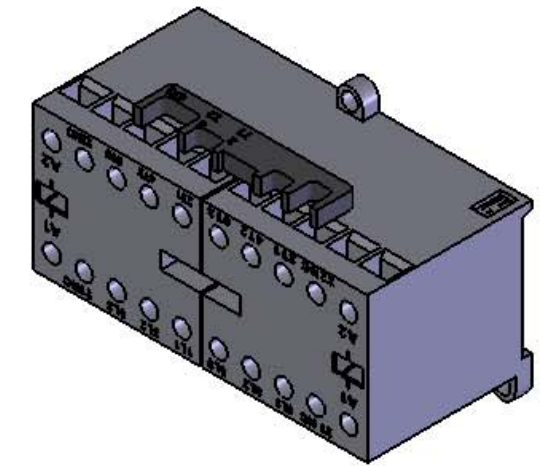
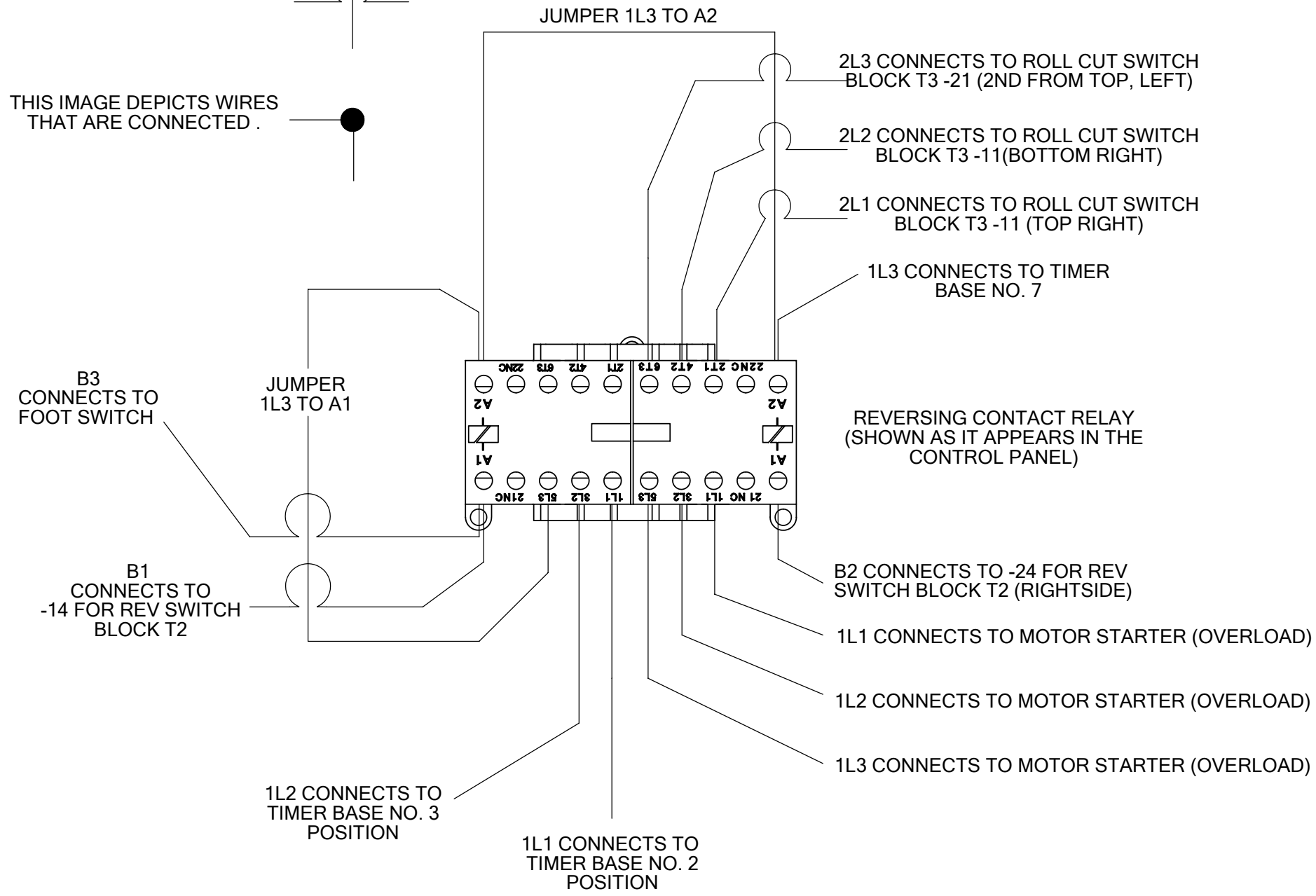


IMAGE DEPICTS WIRES WHICH DO NOT MAKE A CONNECTION.

THIS IMAGE DEPICTS WIRES THAT ARE CONNECTED.



PROPRIETARY AND CONFIDENTIAL INFORMATION
THIS DRAWING AND THE SUBJECT MATTER CONTAINED THEREIN ARE AND SHALL AT ALL TIMES REMAIN THE SOLE AND EXCLUSIVE PROPERTY OF J&D ASSOCIATES, A DIVISION OF UNITED FIXTURES COMPANY, WHICH RESERVES ALL RIGHTS TO THE DESIGN, DRAWING AND SUBJECT MATTER CONTAINED THEREIN. THIS COPY IS LOANED SUBJECT TO THE AGREEMENT AND ON THE CONDITION THAT IT SHALL NOT BE USED FOR ANY PURPOSES OTHER THAN THE PURPOSE FOR WHICH IT IS LOANED TO THE RECIPIENT; THAT IT SHALL NOT BE USED IN ANY WAY DETRIMENTAL TO THE INTERESTS OF J&D ASSOCIATES; THAT NEITHER IT NOR THE SUBJECT MATTER CONTAINED IN THE DRAWING SHALL BE DISCLOSED IN WHOLE OR IN PART, TO ANY OTHER PARTY; THAT IT SHALL NOT BE COPIED IN ANY FORM, NOR IN ANY WAY DISSEMINATED WITHOUT THE PRIOR EXPRESS WRITTEN PERMISSION OF J&D ASSOCIATES; AND THAT IT SHALL BE RETURNED PROMPTLY TO J&D ASSOCIATES UPON REQUEST. ACCEPTANCE OF THIS DRAWING SHALL BE CONSIDERED AS ACCEPTANCE OF ALL THE FOREGOING CONDITIONS.

DO NOT SCALE DRAWING IF IN DOUBT, ASK	DIMENSIONS ARE INCHES UNLESS OTHERWISE SPECIFIED	MAT'L SPEC. NO. CRS/HRS	J&D ASSOCIATES A DIVISION OF UNITED FIXTURES COMPANY	
UNLESS OTHERWISE SPECIFIED, UNIFIED THREADS SHALL BE CLASS 2A (EXTERNAL) OR CLASS 2B (INTERNAL)	TOLERANCES UNLESS OTHERWISE SPECIFIED	3RD ANGLE PROJECTION	* TITLE	
REMOVE ALL BURRS AND SHARP EDGES	FRACTIONAL ± 1/16 2 PLACE DECIMAL ± .06 3 PLACE DECIMAL ± .03 ANGULAR DIMENSION ± 1° N/A TO MATERIAL THICKNESS	APPROVALS DATE DRAWN TGB 4/21/2009 CHECKED * 4/21/2009 APPROVED * 4/21/2009	SIZE C SCALE 2:1	ERN * REV CUT0401A~Service WEIGHT 3.05# SHEET 7 OF 7