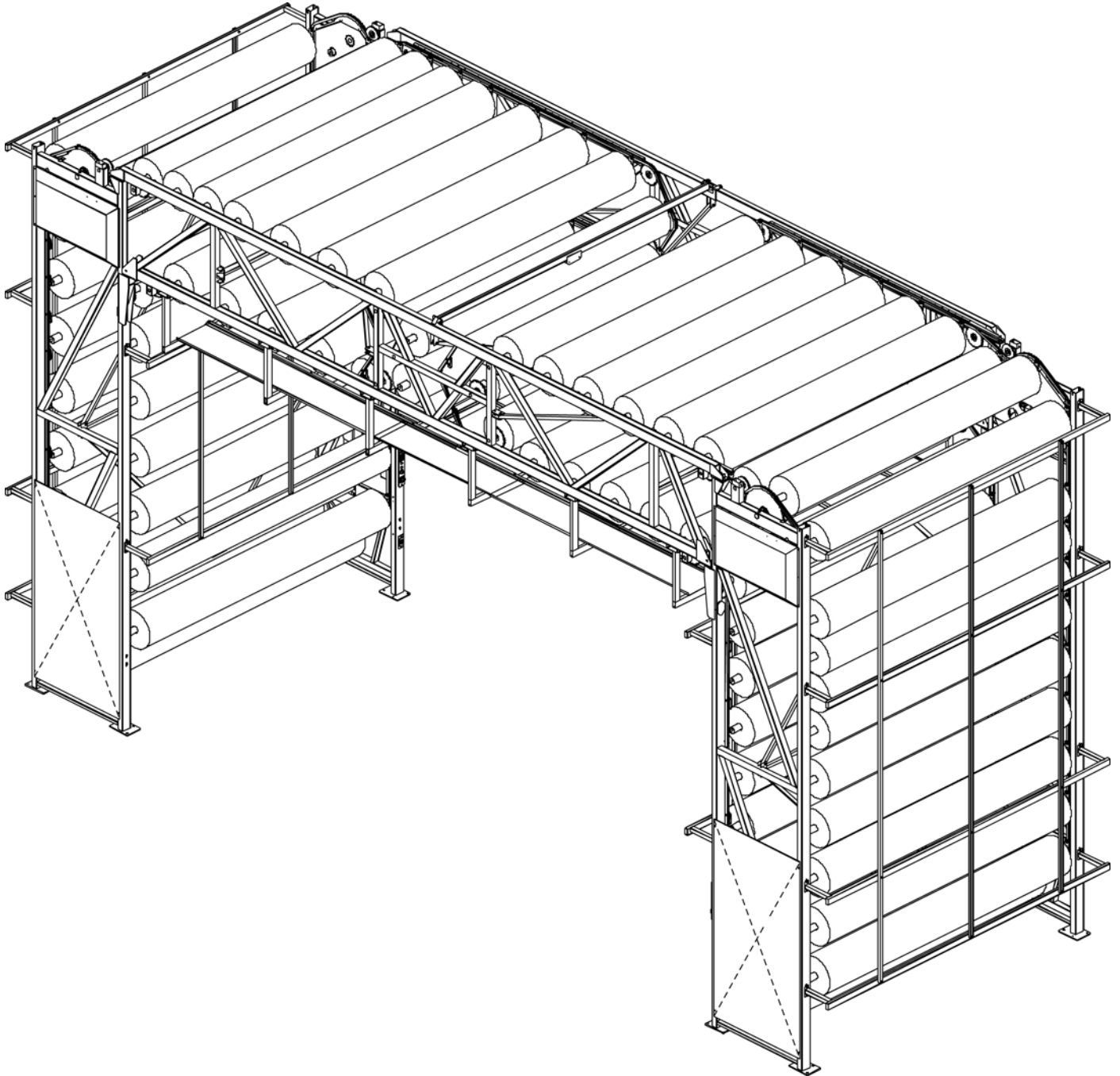


Motorized OTT Carousel - 62 & 66

Operator's Manual



Save These Instructions!

For Service Call 1-866-821-2647

CONTENTS

Introduction.....2
Serial Number.....2
Contact Information2
Important Safety Instructions3
Grounding Instructions.....4
General Safety Rules.....5
Building Requirements.....6
Installation Requirements6
Loading Procedures.....7
 Rolled Goods7
 Combo9
Operating Procedures.....9
 Rolled Goods10
 Vinyl Cutting Bar11
 Vinyl Re-Roller12
 Controls- *IEI* Keypad14
Troubleshooting.....16
Maintenance17
Maintenance Checklists & Inspections18-21
Carousel Parts List22
 R20, R24, R30 Parts.....23
 R39, R45 Parts.....23
 Cutting Bar24
 Chain Hook25
 Electrical Box26
Wiring Dirgram.....27
Warranty & Limitations of Liability.....28

-----Vidir Machine Warranty-----
Standard warranty coverage includes
all parts and labor for a period of one full
year from date of delivery.
For warranty claims, please call our toll free
number before proceeding with any repairs or
replacement parts.
TOLL FREE
1-800-210-0141



INTRODUCTION

Congratulations on the installation of your Vidir material handling machine. This machine has been carefully designed and constructed to provide you with many years of dependable service. It has been built to meet or exceed current U.L./C.S.A. standards. With proper care in operation and maintenance, this machine will assist you in maximizing your efficiency.

To ensure the utmost value and performance from your machine, please read this manual carefully to be sure correct operation procedures are followed.

This manual provides you with operation, troubleshooting, and maintenance procedures for your machine. However, if help is needed or if any of these procedures are unclear, please do not hesitate to contact Vidir Machine Inc. at 1-800-210-0141.

IMPORTANT CAUTION NOTICE:

Vidir Machine Inc. has made every effort to protect operators and others from injury due to mechanical parts movement and electrical safety. As with any mechanical device, the operator is responsible to inspect the condition of the machine prior to use and adhere to safe operating procedures at all times.

SERIAL NUMBER

Please be sure to record the serial number for any future service calls and parts ordering.

Record Serial No: _____

CONTACT INFORMATION

**Head Office
Vidir Machine Inc**

Box 700
Arborg, Manitoba, Canada
R0C 0A0

Service: 1-866-821-2647
Toll Free: 1-800-210-0141
Phone: 1-204-364-2442
Fax: 1-204-364-2454

**U.S. Sales Office
Vidir Inc.**

19 East Lehman St.
Lebanon, PA
17046 USA

Service: 1-866-821-2647
Toll Free: 1-866-898-4347
Phone: 1-717-270-1000
Fax: 1-717-270-1001

IMPORTANT SAFETY INSTRUCTIONS

Read all instructions before installing and operating this machine.

DANGER – To reduce the risk of electrical shock:

1. Turn all switches to the off position and unplug the machine before cleaning, maintenance, or repairs.

WARNING – To reduce the risk of burns, fire, electrical shock, or injury to persons:

1. Turn all switches to the off position and unplug the machine before cleaning, maintenance, or repairs.
2. **WARNING** – Risk of injury – Keep unauthorized persons away from any extended piece of equipment.
3. Use this machine only for its intended use as described by these instructions.
4. Do not use attachments not recommended or approved by the manufacturer.
5. Never operate this machine if it has been damaged, has a damaged electrical cord, or if it is not working properly. For further instruction please contact our service line.
6. Keep cord away from heated surfaces or areas where it can be easily damaged.
To Disconnect: Turn all switches to the off position and unplug the power cord from the outlet.
7. Do not change current limit ratings of overload protectors. For further instruction please contact our service line.

WARNING – Risk of electrical shock – Connect this machine to a properly grounded outlet only. See grounding instructions.

SAVE THESE INSTRUCTIONS

GROUNDING INSTRUCTIONS

This product must be grounded. If it should malfunction or break down, grounding provides a path of least resistance for electric current to reduce the risk of electric shock. This product is equipped with a cord having an equipment-grounding conductor and a grounding plug. The plug must be plugged into an appropriate outlet that is properly installed and grounded in accordance with all local codes and ordinances.

DANGER – Improper connection of the equipment-grounding conductor can result in a risk of electric shock. Check with a qualified electrician or serviceman if you are in doubt as to whether the product is properly grounded. Do not modify the plug provided with the product. If it will not fit the outlet, have a proper outlet installed by a qualified electrician.

This product is for use on a circuit having a nominal rating of more than 120 volts and is factory-equipped with a specific electric cord and plug to permit connection to a proper electric circuit. Make sure that the product is connected to an outlet having the same configuration as the plug. No adapter should be used with this product. If the product must be reconnected for use on a different type of electric circuit, the reconnection should be made by qualified service personnel.

This product must be connected to a grounded metal, permanent wiring system, or an equipment-grounding conductor must be run with the circuit conductors and connected to the equipment-grounding terminal or lead on the product.

GENERAL SAFETY RULES

Read this manual carefully to ensure familiarity with the controls and the proper use of the equipment. The warnings and precautions contained in this manual **DO NOT** cover all potential dangers, and hazards that may be encountered.

This manual is intended to provide basic safety guidelines for proper operation, maintenance, and servicing of the machine.

WARNING – Risk of injury

- Installation and service of this machine should be performed by qualified service personnel.
- Only properly trained service personnel should have access to the interior components of the machine.
- Electrical connections should be performed by qualified electricians.
- Operation must be performed by trained personnel. Never allow children or unauthorized persons to operate the machine.
- **DO NOT** post the security password where unauthorized users will have access to it.

DANGER – To reduce the risk of electrical shock:

- Keep cord away from heated surfaces or areas where it can be easily damaged.
- Do not change current limit ratings of overload protectors. For further instruction please contact our service line.
- Turn all switches to the off position and disconnect power to the machine before cleaning, maintenance, or repairs.
- Risk of electrical shock – Connect this machine to a properly grounded outlet only. See grounding instructions.
- Keep the area of operation clear of all persons and potential hazards.
- Always shut off the main power switch before servicing the machine.
- Keep all guards and shields in place

Use this machine only for its intended purpose as described by these instructions.

Do not use attachments not recommended or approved by the manufacturer.

Never operate this machine if it has been damaged, has a damaged electrical cord, or if it is not working properly. Keep all guards and shields in place.

Keep area clean and organized during operation.

For further instruction please contact our service line.

BUILDING REQUIREMENTS

1. The Carousel must be bolted to the floor before it is loaded. It is the responsibility of building owner to ensure the building structure is adequate for the machine installation.
2. Electrical - Please refer to your serial number located on the front right panel for the electrical details. A dedicated power line and circuit breaker using 4 conductor wire with a 20 amp rating is recommended. The machine has been designed to be hardwired to this electrical service. Once installed, an electrician must be available to hardwire the service to the junction box provided at the top of the machine. (Bottom junction boxes for floor wiring are available by special order at time of order placement.)

INSTALLATION REQUIREMENTS

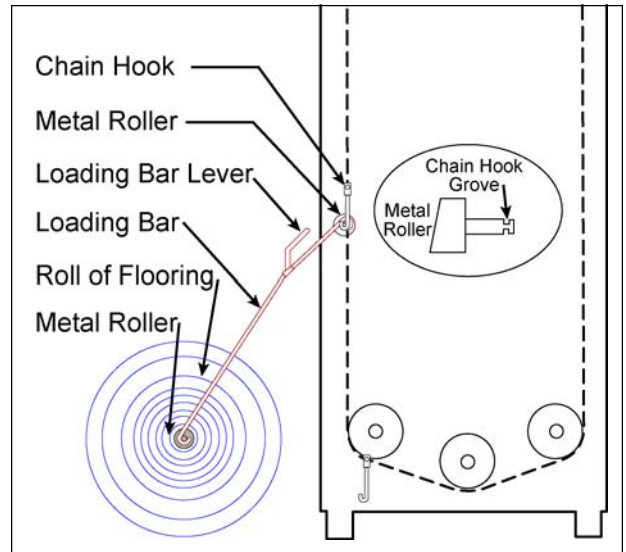
1. Vidir Machine Inc. provides the installation equipment. The equipment used to complete the install requires 110 volt 15 amp single phase circuit at the carousel installation site. Your electrician may need to run a temporary service line before the installers arrive.
2. A forklift with an operator should be available to unload the carousels from the truck and deliver the components to the installation site as required by the installers. Additional forklift time may be required during carousel setup.
3. Installers require a floor plan with the installation location for each carousel clearly marked.
4. A sign-off sheet has been provided for the Store Manager to indicate approval of the placement of the installed carousel. Once completed, our installers are available to bolt down the machine under the manager's supervision.
5. An electrician must be scheduled to connect electrical service to all machines while the installer is present in order that the installer may complete the installation, test run the carousel and do a final check.

LOADING PROCEDURES

1. Enter the code to activate the carousel.
2. Place the roll on the floor directly in front of the carousel, parallel and centered to the rack. Make sure it is placed so that the roll will unroll pile side up for cutting and measuring.
3. Insert a metal roller through the roll with an equal length extending from each end. Push the roll close to the Carousel.
4. Hook lever ends of loading bars onto the metal roller on Carousel above the hook to be loaded. Hook the other ends of the loading bars onto metal roller on the floor as illustrated.

NOTE: Place hooks on shaft of metal rollers.

Make sure the loading bars will extend to the hooks that you are loading.



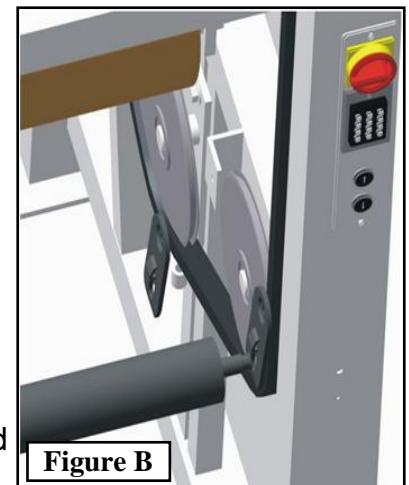
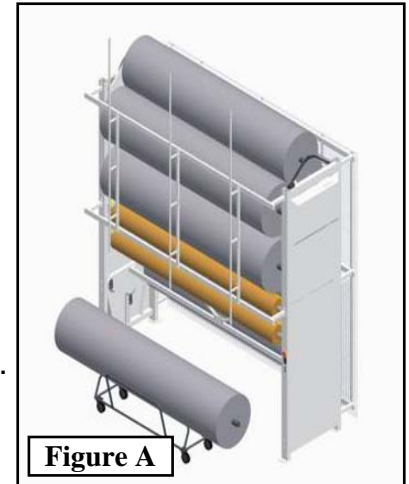
5. Carefully rotate Carousel in the "up" position until the loading bars are at a comfortable working height. Make sure the end of the metal roller does not catch on the side of the Carousel while you are loading.
6. Pull down on loading bar levers to hook metal roller onto chain hook. Slowly and CAREFULLY guide one end at a time into the chain hooks. Make sure the roll is completely and securely seated in the hook and safety latch is securely in place. Release levers and remove loading bars immediately and hang them back into place.
7. Secure the roll with Velcro straps.

IMPORTANT NOTICE

- LOAD ONLY EVERY 4TH ROLL WHEN FILLING EMPTY CAROUSEL
- KEEP LOAD DISTRIBUTED EVENLY AT ALL TIMES
- REMOVE PLASTIC FROM THE ENDS OF THE ROLLS. PLASTIC CAN GET CAUGHT IN THE CHAIN CAUSING SERIOUS DAMAGE TO THE MACHINE AND PERSONAL INJURIES MAY RESULT.

LOADING PROCEDURES—COMBO (USING A CART)

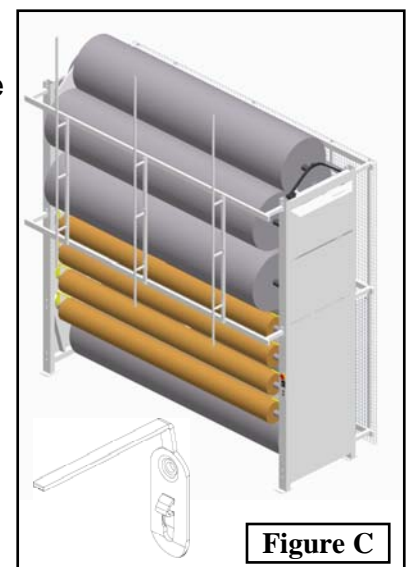
1. Using a forklift load the roll of carpet/vinyl onto the cart.
2. Insert the metal roller into the carpet roll ensuring that an equal length extends from both ends.
3. Move the roll of carpet into position in front of the carousel. Ensure it is parallel and centered to the track. Make sure flooring is placed so it will unroll pile side up for cutting and measuring.
4. Push the cart underneath the hook that is to be loaded (Ref. fig A).
5. Jog the carousel into position so that the hooks line up with the metal roller at both ends.
6. Insert roller into the carousel's metal hooks. Ensuring to hook both ends (Ref. fig. B).
7. Raise the carousel to remove weight from cart and remove cart.
8. Remove plastic from rolls of carpet!
9. Secure rolls with Velcro straps.



Combo Carousel Hooks Explained

The combo carousel is designed to accommodate carpet and vinyl rolls on the same carousel. Rolls of vinyl and carpet must be grouped together as they are loaded onto the carousel according to the roller spacing. (Ref. fig C).

Special yellow hooks designed to limit the size of the rolls indicate the vinyl positions in the carousel (Ref. fig C). These hooks should be used for vinyl rolls only.



IMPORTANT NOTICE

- LOAD ONLY EVERY 4TH ROLL WHEN FILLING EMPTY CAROUSEL
- KEEP LOAD DISTRIBUTED EVENLY AT ALL TIMES
- REMOVE PLASTIC FROM THE ENDS OF THE ROLLS. IF PLASTIC GETS CAUGHT IN THE CHAIN IT CAN CAUSE SERIOUS DAMAGE TO THE MACHINE AND PERSONAL INJURIES MAY RESULT

GENERAL OPERATIONAL PROCEDURE TIPS

1. When at all possible, rotate Carousel in the “down“ position.
2. Keep the Velcro straps on each roll at all times to prevent rolls from binding and unrolling.
3. Keep machine load balanced at all times.

Additional straps are available through your local supplier or Vidir Machine Inc.

OPERATING THE CAROUSEL—ROLLED GOODS

1. Enter the security code in the keypad and move the carousel up or down to the desired position.
2. If an entanglement or obstruction occurs, reverse the machine's rotation, and remove obstruction. (See Troubleshooting)
3. If your carousel is equipped with a cutting bar and counter, see the instructions on the next page.

OPERATING THE CAROUSEL—VINYL CUTTING BAR

The vinyl cutting bar allows for the dispensing of vinyl directly off of the machine onto a re-roller and to measure the appropriate amount of vinyl for the customer.

The Vinyl cutting bar is fast and efficient method of improving customer service on your Vidir vinyl carousel.

Cutting Procedure:

1. Pull the vinyl across the cutting bar to the line of cut as indicated on the cutting bar.
2. Lower the counter assembly and set the counter to zero.
3. Once the counter is set, pull the vinyl and clip to the easy-to-use re-roller. Turn the crank to roll and measure the desired length of vinyl.
4. Once the desired length has been dispensed, lower the hold-down clamps located at both ends of the cutting surface.
5. To cut the vinyl, simply turn the cutter crank. Un-clamp the vinyl and secure the dispensed roll with tape or shrink wrap.

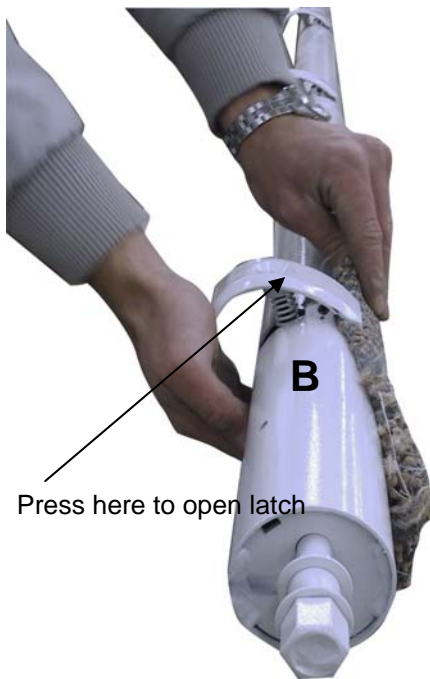
To remove dispensed roll, swing the self storage roll cradles in place, drop the roll onto the cradles and remove the re-roller.

OPERATING THE CAROUSEL—VINYL RE-ROLLER

1. To begin the re-rolling process, engage all re-roller latches by turning latch nut (A) in the counterclockwise direction till firmly engaged.
2. Remove the wrench and place the re-roller tube into the support brackets
3. To insert the vinyl press down on each latch separately and insert the vinyl.
4. Let go of the latch and the spring-loaded latch will grasp the vinyl.
5. Once all 4 latches (B) are grasping the vinyl you can re-roll the product onto the pole.



6. To release the vinyl turn the latch nut (A) in the clockwise direction. **Note:** If re-roller is difficult to remove from the roll of product try rotating the re-roller counter clock wise for a few turns before attempting to remove the re-roller from the product.



Press here to open latch

7. Slide the re-roller out of vinyl roll.



Note: If re-roller is difficult to remove from the roll of product try rotating the re-roller counter clock wise for a few turns before attempting to remove the re-roller from the product. Also unrolling some of the roll of Vinyl before starting to wrap it on the re-roller will allow the material to wrap up loosely onto the re-roller for the first few wraps. This will help ease the amount of effort needed to remove the re-roller from the cut roll of Vinyl.

OPERATING THE CAROUSEL TO UNROLL FABRIC

1. Move to the rear side of the unit and turn the front / rear selector switch to select "front".
2. Move to the front of the machine.
3. Position the roll of fabric so that it will align with the top of the cutting table.
4. Remove the Velcro straps.
5. Apply the roll brake to prevent the roll from free wheeling.
6. Pull the leading edge of the fabric onto the cutting table.
7. Feed material onto the cutting table.
8. When the cut has been completed, remove the brake straps.
9. Roll up the loose fabric onto the roll.
10. Secure roll of fabric with Velcro straps to prevent snagging or unwanted unraveling of the product.

KEYPAD



This machine has the built-in safety feature of a security keypad to prevent unauthorized operation of this machine. This keypad has been supplied with factory settings, including the password required to activate the controls (the password is 4321*).

Password Customization - the keypad requires a moment to register each step:

| <u>PRESS</u> | <u>KEY PAD LIGHT</u> |
|-----------------------------|----------------------|
| 1. 99#..... | steady red |
| 2. Current code*..... | flashing yellow |
| 3. 30# | flashing yellow |
| 4. 1# | flashing yellow |
| 5. NEW 4 DIGIT CODE * | fast flashing yellow |
| 6. NEW 4 DIGIT CODE * | flashing yellow |
| 7. * | steady red |

Once this sequence is completed, your new password is programmed and should be used to activate the controls.

PLEASE NOTE:

The security password protects against unauthorized operation of the equipment. Factory default setting allows the machine to be idle for 30 seconds before the password expires. After 30 seconds of machine idle time, the keypad will time out and operator's password must be re-entered to activate the controls.

Note: To reset your keypad to factory settings, please refer to the instructions located on next page.

Menards OTT Carousel Operator's Manual

Restore Factory Defaults:

1. Turn the red power switch off.
2. Press and hold both up and down push-buttons at the same time.
3. While holding both the up and down push-buttons turn the red power switch on.
4. Continue to press and hold both the up and down push-buttons until you hear a couple of beeps.
5. Release both of the up and down push-buttons.
6. The yellow light should be flashing.

Follow the steps below to reset the keypad - the keypad requires a moment to register each step:

| Press Keys | Keypad Lights |
|-------------------------|----------------------|
| 46# | flashing yellow |
| 00000# | flashing yellow |
| 00000# | flashing yellow |
| * | fast flashing yellow |
| * | flashing yellow |
| 30# | flashing yellow |
| 1# | flashing yellow |
| ENTER CODE * | fast flashing yellow |
| ENTER CODE * | flashing yellow |
| * | steady red |

Changing Code and Timer:

| Press Keys | Keypad Lights |
|-------------------------|----------------------|
| 99# | steady red |
| 2. Current code* | flashing yellow |
| 3. 30# | flashing yellow |
| 4. 1# | flashing yellow |
| 5. NEW CODE * | fast flashing yellow |
| 6. NEW CODE * | flashing yellow |
| 7. * | steady red |

TROUBLESHOOTING

| | |
|---|---|
| Carousel will not run | <ul style="list-style-type: none">A. Re-enter the security code.B. Check if the master switch is on.C. Check and reset circuit breaker.D. Make sure the machine load is evenly balanced.E. If carousel has been overloaded and the thermal overload has tripped, allow some time for it to cool down. Then press the reset button on the motor to reset overload. |
| Motor Lugs down or breaker trips | <ul style="list-style-type: none">A. Make sure machine load is evenly balanced.B. Check and reset circuit breaker. |
| Carousel is noisy | <ul style="list-style-type: none">A. Tighten set screws on pulley and/or tighten belt. (replace if necessary)B. Check for correct chain alignment.C. Oil the Chains. |

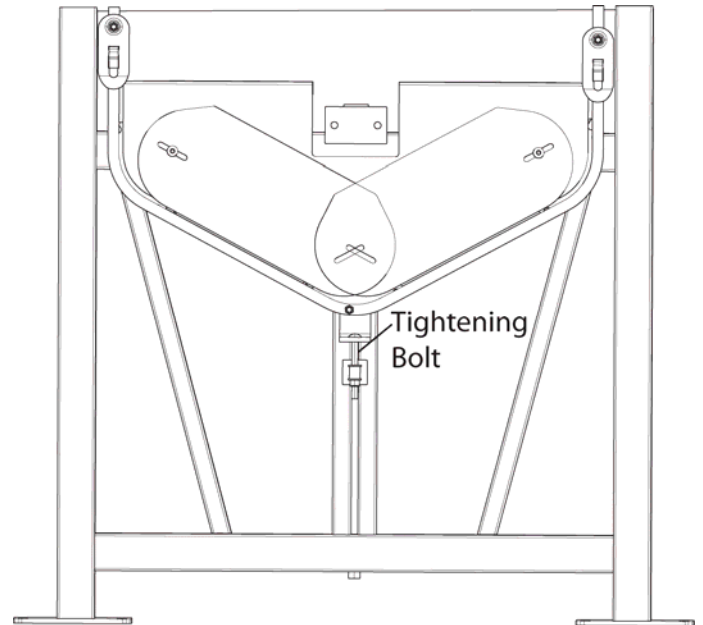
NOTE: If a PLC is Present:

The Large PLC requires 2 amp Fuses

The Large PLC will be used in Carousels which MAY or WILL HAVE a computer used in conjunction with them.

MAINTENANCE

1. To correct squeaking, oil the chains with lightweight oil. Apply the oil to the chain using an oil soaked sponge and wipe with dry rag to remove excess oil.
2. Check for oil leaks around gearboxes.
3. Inspect the drive chain for wear, proper alignment, and tension. (Maximum of an 1/8" deflection on drive chain)
4. Inspect the main load chain and tighten it if it is too loose. (With the carousel loaded, the chain should not sag more than 1" from the bottom chain guard. See diagram for location of tightening bolt.)
5. Do a visual inspection of hooks and roll pins. The hooks should swing freely and be sure to replace any damaged hooks. (New lock nuts must be used when replacing hooks.)
6. Inspect safety latches to ensure they are in good working condition.
7. Carefully inspect all the roller shaft ends for wear or damage. (Lubricate with a drop of oil or spray grease)
8. Lubricate the carousel hook bolts once a month by spraying with lithium grease.
9. Check the belt tension on the electric motor. The belt should be tight. To tighten belt, loosen the four bolts on the motor, move the motor down, and then re-tighten the bolts.
10. Inspect the snap rings that hold the sprockets in place. Make sure snap rings are fully snapped into position.
11. Inspect all bearings.
12. Ensure the loading bars are in good condition and hung in the proper locations.
13. Check to ensure all covers are in place and are in good condition.



OTT Carousel Preventative Maintenance Checklist

| | | | |
|-----------------------------|------------|-----------------------|----------------------------|
| Company | City | Province | Date of Service: |
| Store No. | Serial No. | Model/Type | Current Hour Meter Reading |
| Service Company: | | Store Signoff:(Print) | |
| Service Technician (Print): | | Store Title: | |
| Service Tech Signature: | | Store Signature: | |

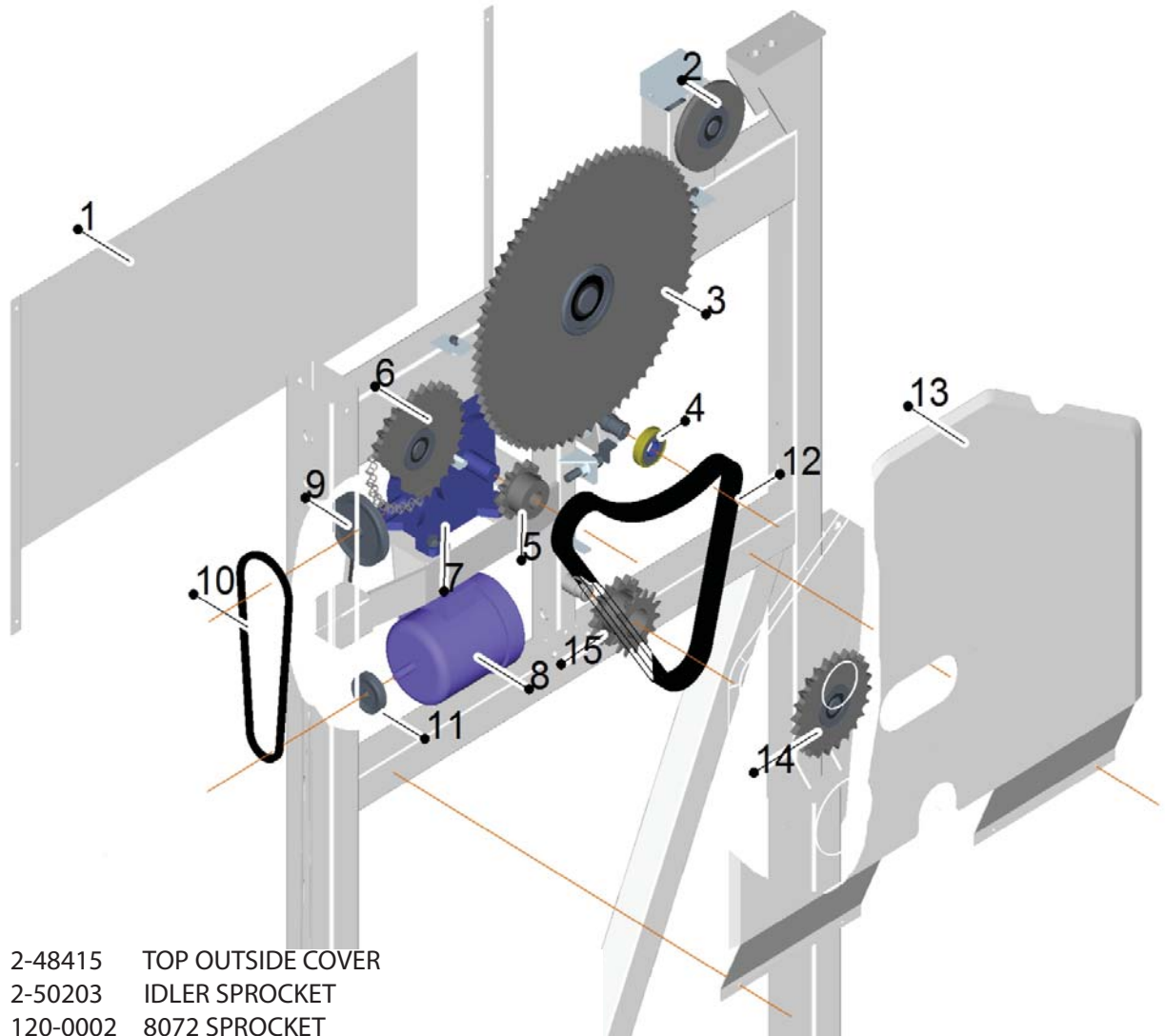
Preventative Maintenance is Recommended Every 100 Hours or 12 Months. Inspect both sides of the machine. The inspection of all hooks, bolts, pins, mounting hardware, chains and the overall condition of these components are critical to ensure machine safety, and integrity of the preventative maintenance process. Initialling each line as indicated below confirms these items have been thoroughly inspected for defects.

| ✓ Indicates item is inspected and in good condition - ✗ Indicates item requires additional service | Service | Initials |
|---|---------|----------|
| Mechanical inspection, motor and gearbox: | | |
| - Inspect motor/gearbox mounting bolts, ensure they are secure | | |
| - Check gearbox oil levels and condition, refill as necessary, visually inspect for oil leaks | | |
| - Check alignment and tension of motor drive belt, inspect for wear | | |
| - Inspect pulley and sprocket set screws to ensure they are tight | | |
| - Verify drive chain alignment and proper tension | | |
| - Inspect all bearings for wear indications | | |
| - Visually inspect remaining fasteners for damage and general condition | | |
| Mechanical inspection, Load chain and sprockets: | | |
| - Visually inspect load chain for wear and damage, oil as required. | | |
| - Check the chain connector link cotter pins for wear | | |
| - Remove all debris, plastic, carpet, etc. from sprockets | | |
| Visual inspection, hooks and hook connecting hardware: | | |
| - Ensure fasteners are secure and there are no signs of damage or wear | | |
| - Check that all hooks swing freely, that there is no binding | | |
| - Inspect hook bolts for wear and general condition | | |
| - Inspect all hook safety latches for damage and unusual wear indications | | |
| - Check roller shafts for wear indications. | | |
| Visual inspection, general operating conditions: | | |
| - Ensure all covers and guarding are in place and secure | | |
| - Ensure there are no foreign objects projecting into the machine operating path. | | |
| - Inspect horizontal slider track, ensure in good condition and mounted securely to machine (if equipped) | | |
| Visual and mechanical loading bar inspection: | | |
| -Ensure loading bars are in place and chained. | | |
| -Visually inspect the loading bar for signs of damage and wear. | | |
| -Ensure loading bar stickers are in place. | | |
| -Check that rolls are strapped properly. | | |
| - Inspect pulley and sprocket set screws to ensure they have lock-tight applied to the threads and are tight. | | |
| - Verify drive sprocket alignment and proper tension of drive chain. | | |

Conclusion: This unit has been inspected and serviced for safe operation and is operating as intended by the manufacturer.

Comments and Parts Used (If any): _____

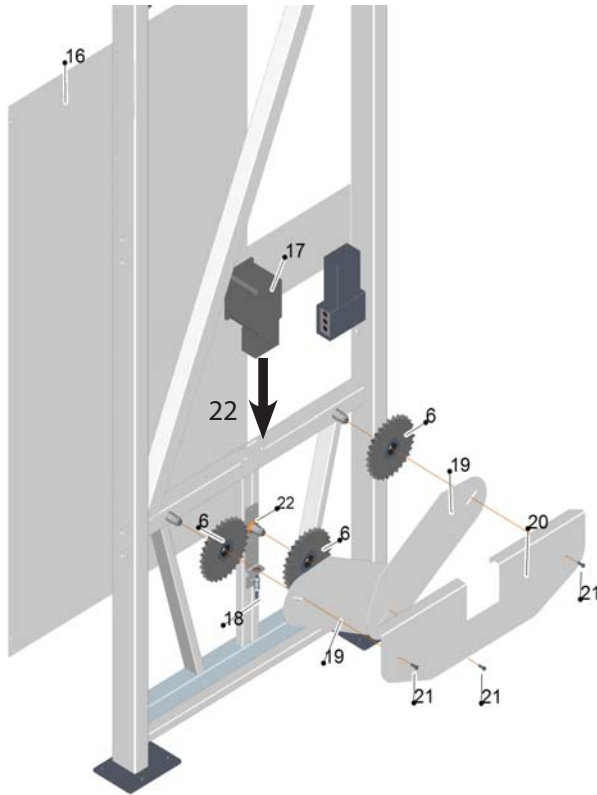
OTT Components



| | | |
|-----|----------|------------------------------|
| 1 | 2-48415 | TOP OUTSIDE COVER |
| 2 | 2-50203 | IDLER SPROCKET |
| 3 | 120-0002 | 8072 SPROCKET |
| 4 | 111-0127 | CHAIN IDLER |
| 5 | 120-0136 | DRIVE SPROCKET |
| 6 | 120-0001 | 10" SPROCKET |
| 7 | 107-0013 | 80/60-1 GEARBOX |
| 8 | 407-0007 | MOTOR 3PH 1.5HP |
| 9 | 115-0043 | PULLEY BK57 |
| 10 | 102-0054 | V-BELT B38 |
| 11 | 115-0047 | PULLEY BK34 |
| 12 | 105-0049 | #80 DRIVE CHAIN 60" WITH CON |
| 13a | 2-50320 | TOP INSIDE COVER - LEFT |
| 13b | 2-50321 | TOP INSIDE COVER - RIGHT |
| 14 | 120-0049 | 8024 IDLER SPROCKET |
| 15 | 2-40600 | DRIVE SHAFT COUPLER |

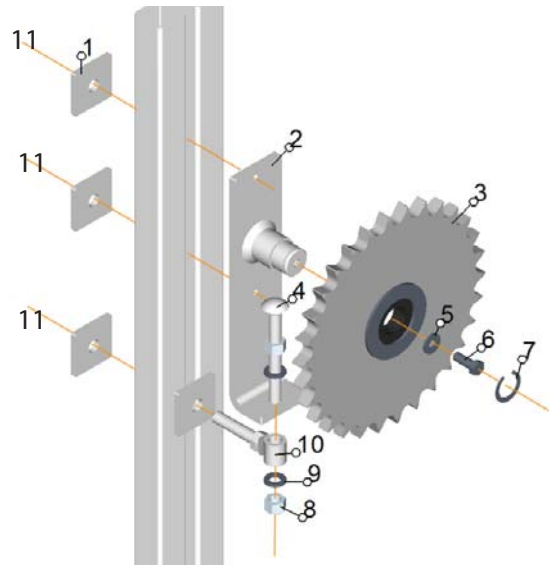
CAUTION
DO NOT REMOVE THE DRIVE CHAIN
OR GEARBOX WITHOUT SECURING
THE LOAD
 refer to the instruction in the service
 manual

OTT Components



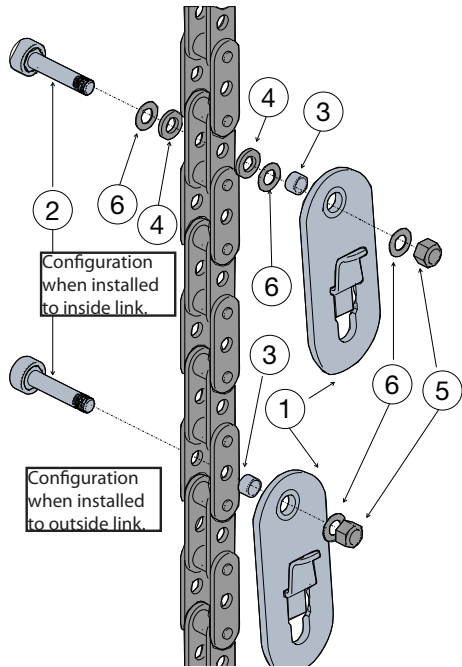
- | | | |
|---|----------|-----------------------|
| 6 | 120-0001 | 10" SPROCKET |
| 16 | 2-50442 | BOTTOM OUTSIDE COVER |
| 17 | 403-0014 | 5HP VFD |
| 18 | 001-0049 | 3/8 CARRIAGE BOLT |
| 19 | 2-48417 | BOTTOM INSIDE COVER 2 |
| 20 | 2-55460 | BOTTOM INSIDE COVER |
| 21 | 001-0114 | 3/8 X 1 HEX BOLT |
| 22 | 410-0073 | VFD CONNECTOR FLX KIT |
| Not shown 003-0113 Washer 3/8 x 3/4 x 11G | | |

- | | | |
|----|----------|-------------------------------------|
| 1 | 2-45153 | SLIDER WASHER |
| 2 | 2-45148 | BOTTOM TIGHTNER SLIDE |
| 3 | 120-0001 | 8030 SPROCKET |
| 4 | 001-0076 | BOLT CARR 1/2x5 GR5 UNC TAP |
| 5 | 003-0113 | WASHER 3/8x3/4x11G. |
| 6 | 001-0114 | BOLT HEX 3/8 X 1 GR5 UNC |
| 7 | 116-0005 | SNAP RING |
| 8 | 004-0046 | LOCK NUT |
| 9 | 003-0017 | WASHER 1/2 X 7/8 X 1/8" |
| 10 | 2-40450 | CHAIN TIGHTNER ANCHOR |
| 11 | 001-0072 | BOLT CARR 1/2x3 GR5 UNC (not shown) |



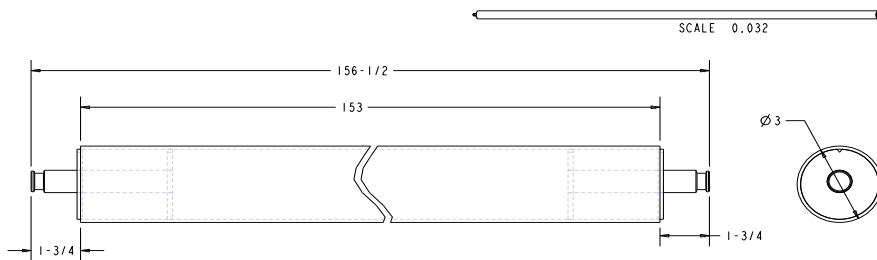
OTT Components

Menards OTT Carousel Hook, Hardware



| Key | Description | Item_no |
|-----|--|----------|
| 1 | OTT carousel hook W/ bolt kit (includes items 2,3,4,5) | 111-0286 |
| 1 | OTT carousel hook with bushing (includes items 3,4,5) | 111-0094 |
| 2 | C55 ott carousel bolt | 2-44485 |
| 3 | Bushing crsl hook | 007-0062 |
| 4 | Wshr flat 7/16 x 0.118 Thk | 003-0041 |
| 5 | Nut lock 7/16 steel I9 unc | 004-0088 |
| 6 | Wshr flat 7/16 0.032 Thk | 003-0015 |
| | | |

Please see page 23 for assembled carousel chain.

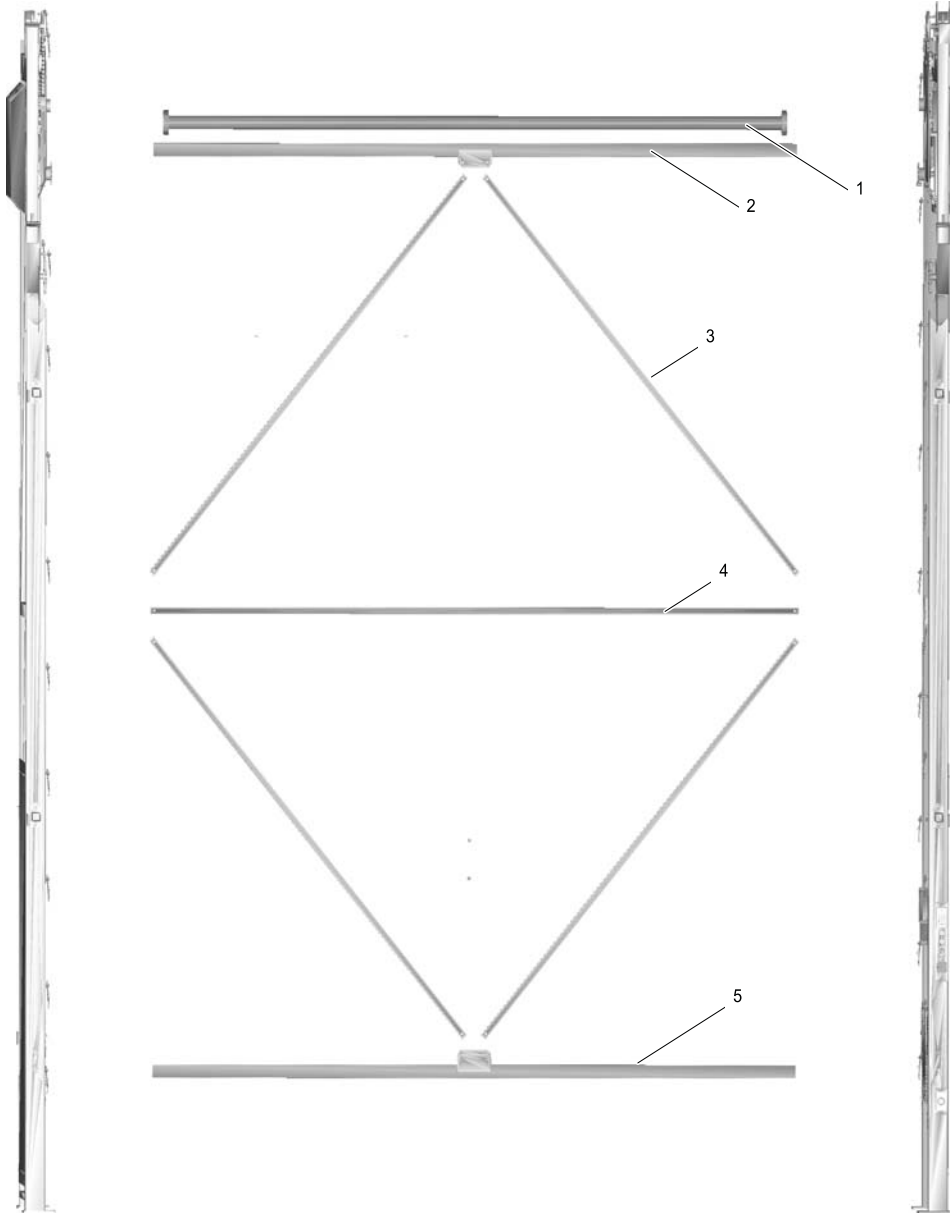


1. 2-45086 Roller, complete 12ft, 3 O.D.

NOTE

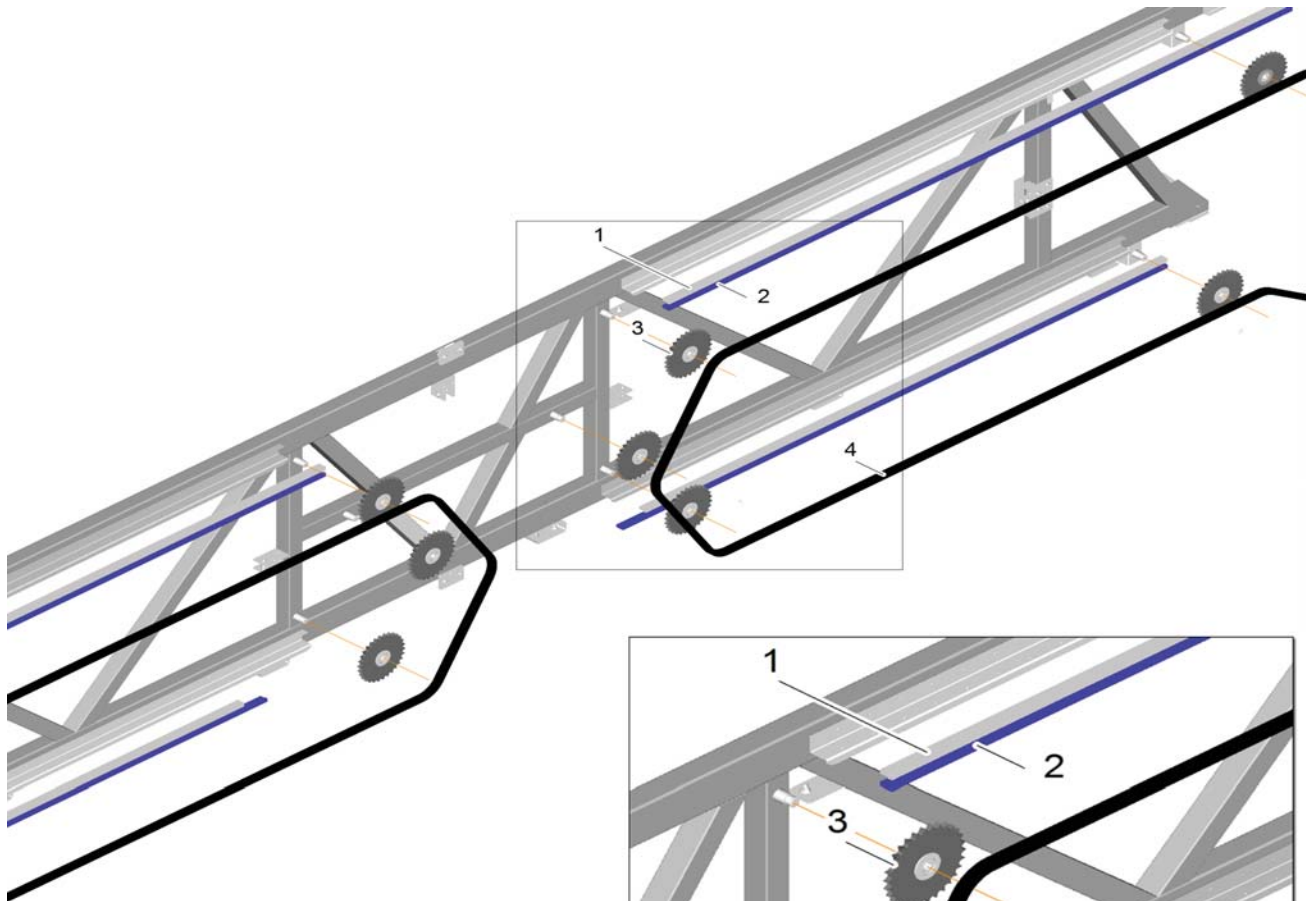
Carpet Carousel roller used these dimensions as of July 22nd 1997
 Vinyl Carousel roller used these dimensions as of June 22nd 1998

OTT Components



- 1 2-48015 DRIVE SHAFT
- 2 2-47280 TOP CROSS BRACE
- 3 2-50216 DIAMOND BRACE
- 4 2-49617 DIAMOND HORIZONTAL
- 5 2-47281 BOTTOM CROSS BRACE

OTT Components



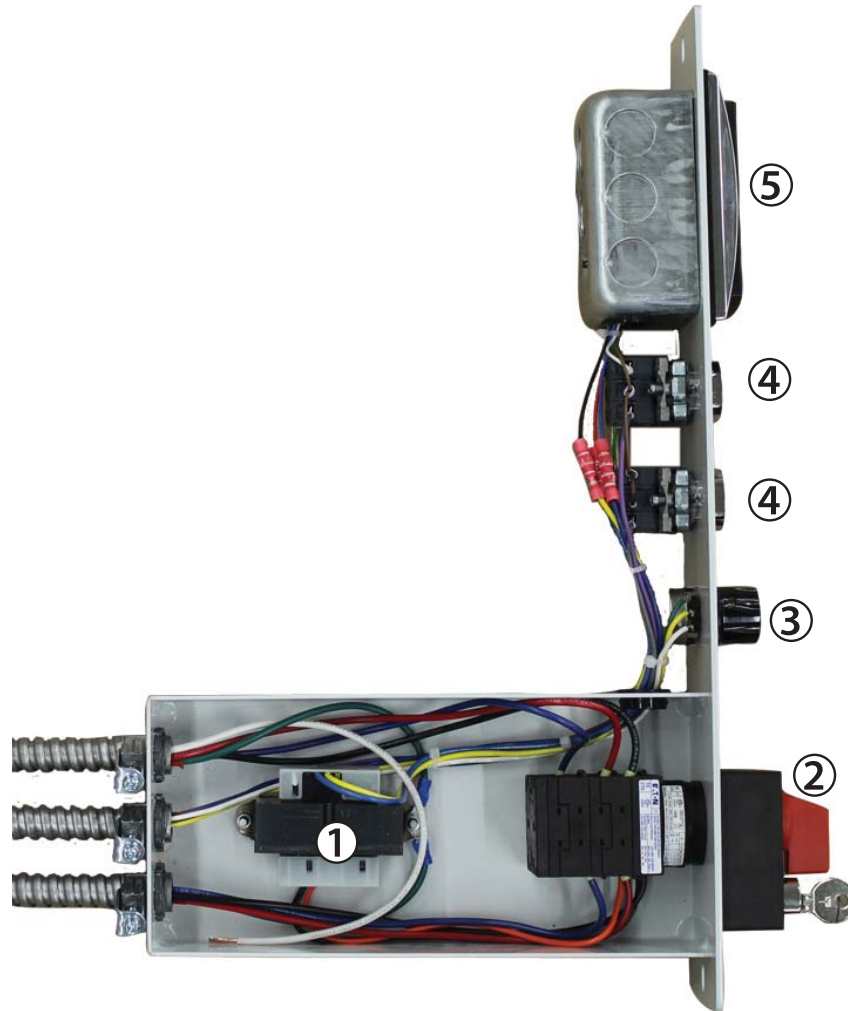
- 1 2-52066....UPPER RT MENARDS TRACK GUIDE
2-52068....UPPER LFT MENARDS TRACK GUIDE
- 2 2-52067...LOWER RT MENARDS TRACK GUIDE
2-52069...LOWER LFT MENARDS TRACK GUIDE
2-52070...LOWER RT MENARDS TRACK GUIDE SHORT
2-52071...LOWER LFT MENARDS TRACK GUIDE SHORT
- 3 120-0001 8030 SPROCKET
- 4 2-52373 OTT_CHAIN_ASM_62 RT
2-52375 C55_OTT_CHAIN_ASM 66 LEFT
2-52374 C55_OTT_CHAIN_ASM 66 RT
2-52372 C55_OTT_CHAIN_ASM_62 LEFT

NOTE

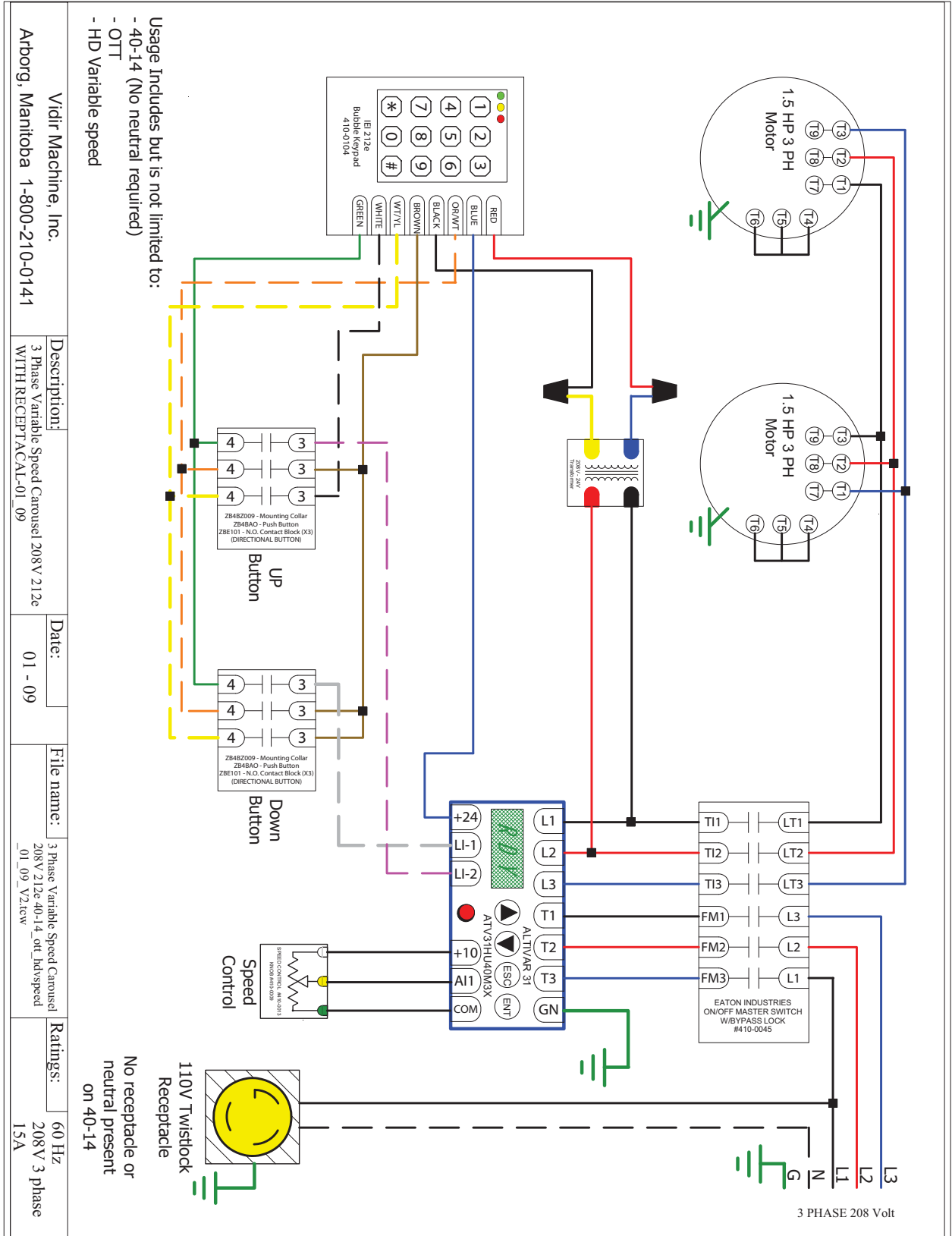
All sprockets on bridge are the same size

ELECTRICAL BOX DIAGRAM

Menards Soft Start, Var. Speed, By-Pass



| Key | Description | Item_no |
|-----|---|----------|
| 1 | 208/24 Volt transformer | 411-0002 |
| 2 | Switch on/off master w/bypass lock. | 410-0045 |
| 3 | Speed control switch | 410-0013 |
| | Speed control knob (5150) | 410-0009 |
| 4 | Up/down push button | 410-0050 |
| 5 | IEI bubble style key pad (used since 07/06) | 410-0104 |



Warranty & Limitation of Liability

Vidir Machine Inc. ("Vidir") warrants solely that the equipment shall be free from any defect due to faulty workmanship or material deficiency at the time of delivery to the buyer thereof (the "Buyer") and for a period of one year therefrom. All work except minor repairs or adjustments to the equipment furnished on an emergency basis, will be performed during regular working hours. If the Buyer requests that repair work be performed outside of regular working hours, it is the responsibility of the Buyer to pay the difference between regular and premium labour rates at the then standard hourly billing rate.

This warranty shall be voided by any modifications to the equipment or any use of the equipment for any purpose other than that for which it was specifically intended.

This warranty is the only warranty made by Vidir. The Buyer hereby expressly waives any obligations or liability, including liability for loss or damages due directly or indirectly, any obligations including, without limitation, loss of use, revenue, or profit, shipping and handling, and injury to person or property.

It is the responsibility of Buyer to know, understand and comply with the work and safety laws and regulations in effect and governing Buyer's use of the equipment. To the extent governing law requires inspections, records keeping and/or after-purchase modifications to the equipment, it is the responsibility of the Buyer to arrange for and comply with such requirements and any associated costs are the sole responsibility of the Buyer. Vidir assumes no responsibility or liability for Buyer's performance under or compliance with such laws and regulations.

If the equipment is found by the Buyer to be defective, the Buyer must notify Vidir within a period of 30 days of discovery of the defect.

The Buyer is expected to provide access to all equipment covered by this warranty. Vidir shall not be responsible for any expense incurred in removing, replacing, or refinishing any part of the building structure necessary for the performance of Vidir's obligations under this warranty.

In the event that any alterations, additions, adjustments or repairs are made by others without Vidir's prior written consent, Vidir may, at its option, immediately terminate this warranty by providing written notice to the Buyer.

In the event Vidir is required to make emergency calls, repairs and/or replacements under this warranty occasioned by the Buyer or any user's negligence, improper operation or misuse of the equipment or by fire, explosion, flooding, the elements, strikes, labour troubles, vandalism, riots or civil commotion, or by any cause beyond Vidir's control. The Buyer shall reimburse Vidir for such emergency calls, repairs and/or replacements in accordance with the then current rates for such services.

Vidir's liability for injury to persons or property shall, in any event, be limited to that caused directly by its negligence. Vidir shall not be liable, however, on any account, for any damage or loss to the Buyer or its dealers, representatives, affiliates or agents resulting from business interruption, inconvenience, loss of profits, or special or, indirect or consequential damage. Vidir shall not be deemed to guarantee or warrant the continuing operation or operating efficiency of the equipment covered, nor shall Vidir be liable for any breakdowns thereof or for any damage to any other property of the Buyer not covered by this warranty but resulting from any breakdowns in or operating mishaps of the equipment covered.

Should any payment due by the Buyer become thirty days or more delinquent, Vidir may terminate this warranty by written notice, and all moneys owed Vidir shall be immediately payable on demand.

This warranty is not transferable or assignable by the Buyer.

Vidir reserves the right to determine, in its sole and absolute discretion the best means and methods to be employed for any corrective or repair work deemed necessary by Vidir pursuant to this warranty.