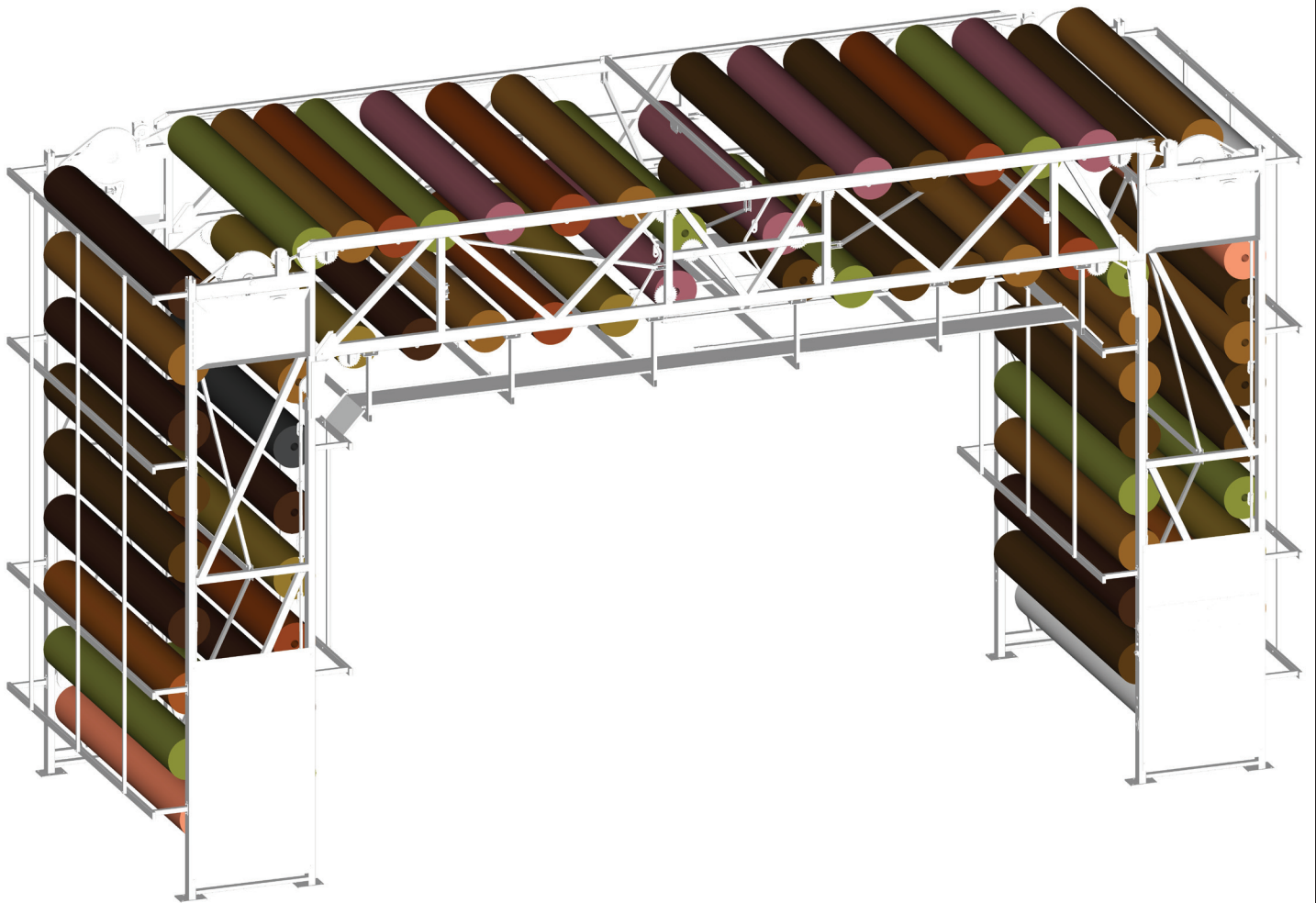


# MENARDS

## OTT Components



# Carousel Mate Components



# Carousel Mate Electrical



Some of the cables used are crossover cables, a pigtail (406-0087) will be needed when a new PLC & display is ordered unless the customer already has one.



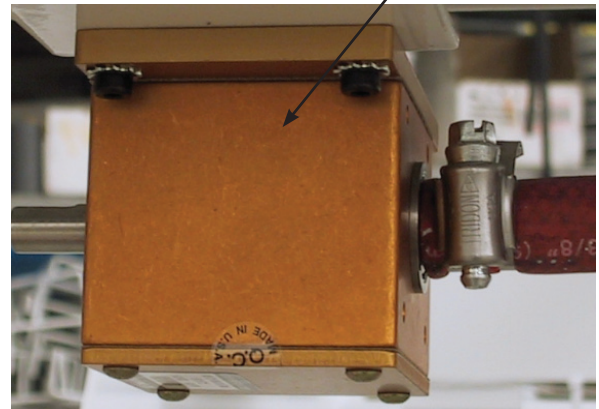
• Display #409-0057

• PLC #409-0055

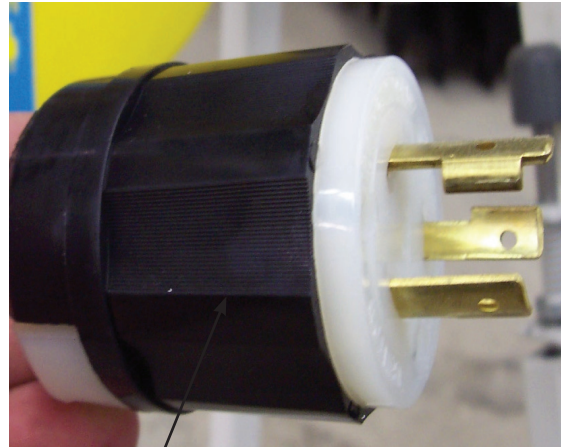
PLC to display cable 409-0080

Pig tail adapter #406-0087

Double shaft encoder #402-0042

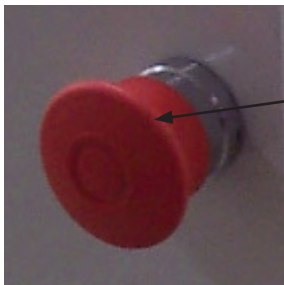


# Carousel Mate Electrical



Plug

Reel-O-Matic #406-0013



E-Stop #410-0056

contact block N/C #410-0061

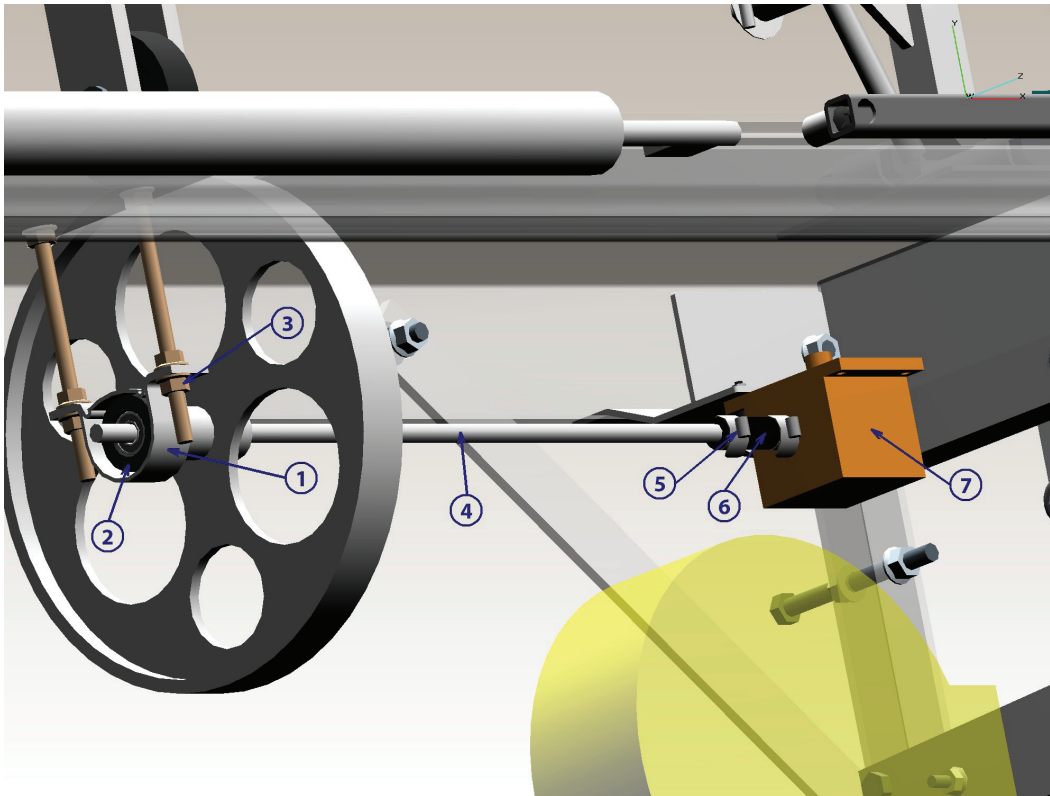
E-Stop complete #410-0042

mounting collar #410-0059



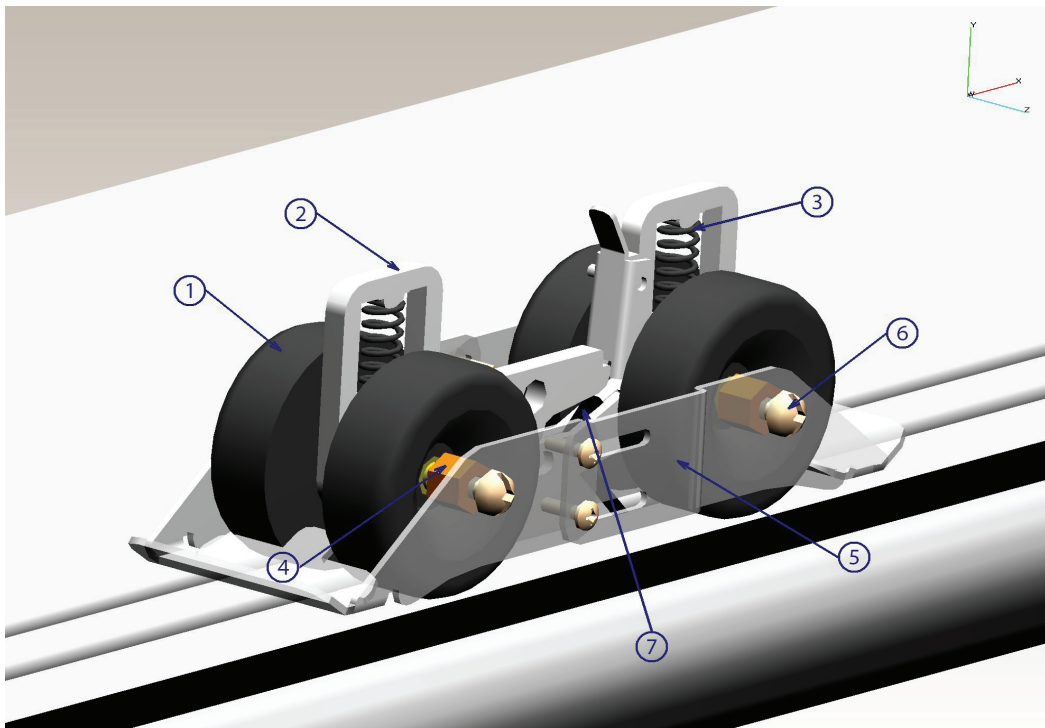


# Carousel Mate Components



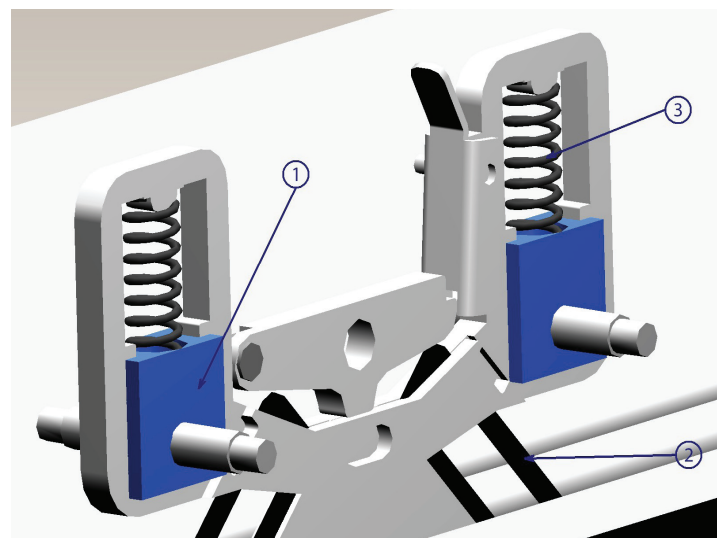
- 1 006-0053 Split bearing block
- 2 8-52907 Counter Wheel Bearing Asm
- 3 004-0014 3/8 Lock Nut
- 4 8-1550 Counter Wheel Shart
- 5 111-0016 Hose Clamp
- 6 402-0005 Counter Wheel Shaft Connector 402-0042
- 7 402-0042 Double Shaft Encoder

# Carousel Mate Components

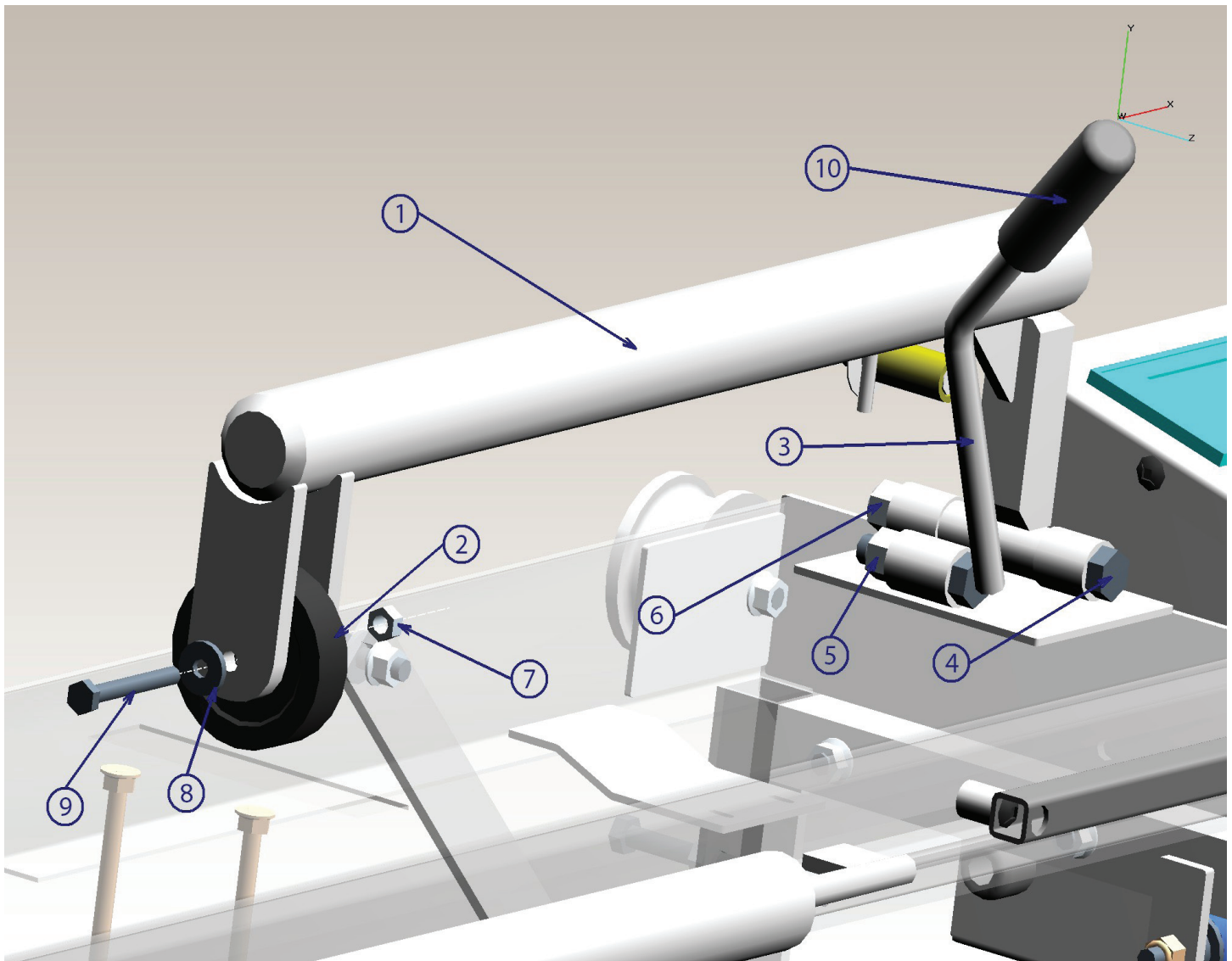


- 1 7-43812 Blade Holder Wheel
- 2 8-44079 Manual Blade Holder
- 3 119-0032 Spring
- 4 2-60282 Hex Spacer
- 5 2-62058 Cutter Wheel Cover
- 6 002-0018 Screw
- 7 103-0012 Persona Blade

- 1 7-78058 Dbl blade holder slider assembly
- 2 103-0012 Persona Blade
- 3 119-0032 Spring



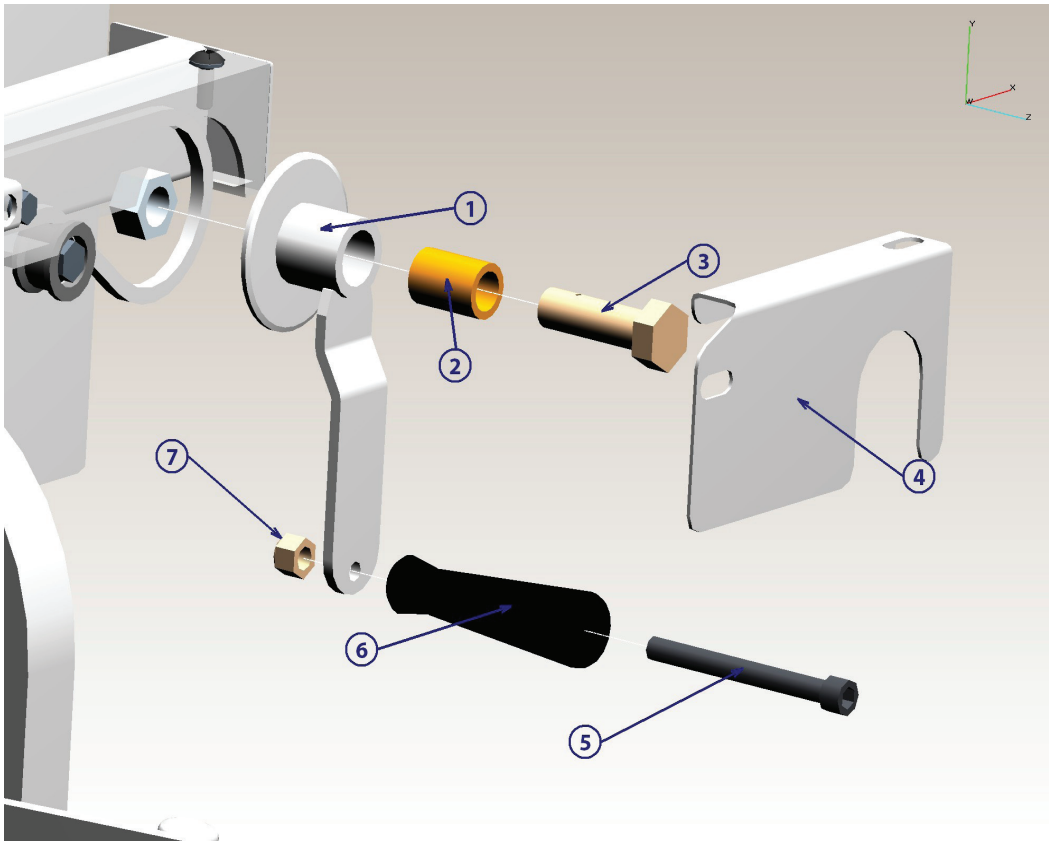
# Carousel Mate Components



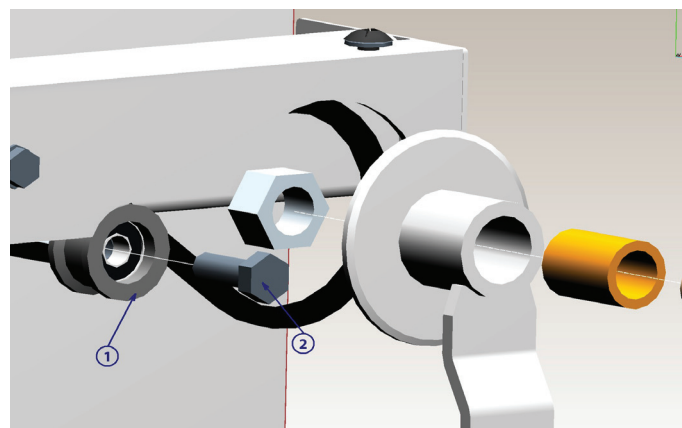
## Notes

- |    |          |                         |
|----|----------|-------------------------|
| 1  | 7-61348  | Counter Hold Down Arm   |
| 2  | 104-0002 | 3 Inch Wheel            |
| 3  | 8-46942  | Counter Hold Down Lever |
| 4  | 001-0153 | Bolt                    |
| 5  | 004-0046 | Nut                     |
| 6  | 004-0046 | Lock Nut                |
| 7  | 004-0043 | Nut                     |
| 8  | 003-0006 | Washer                  |
| 9  | 001-0103 | Bolt                    |
| 10 | 7-1170   | Plastic Handle          |

# Carousel Mate Components



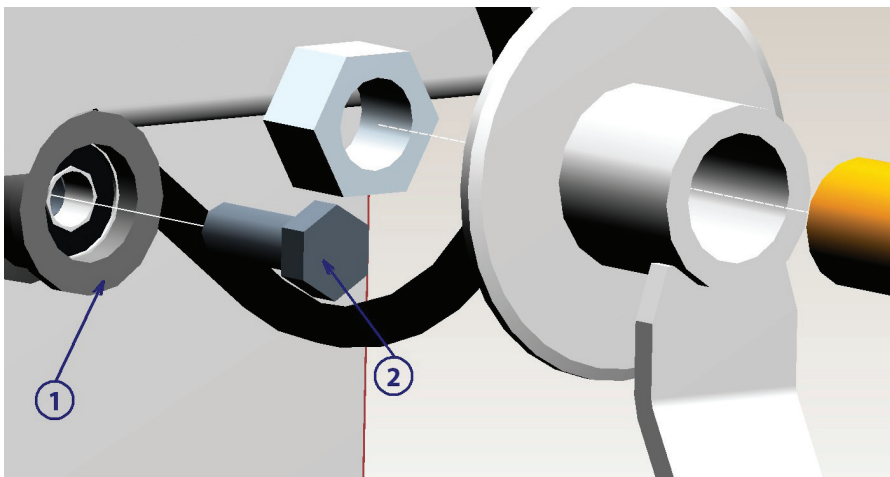
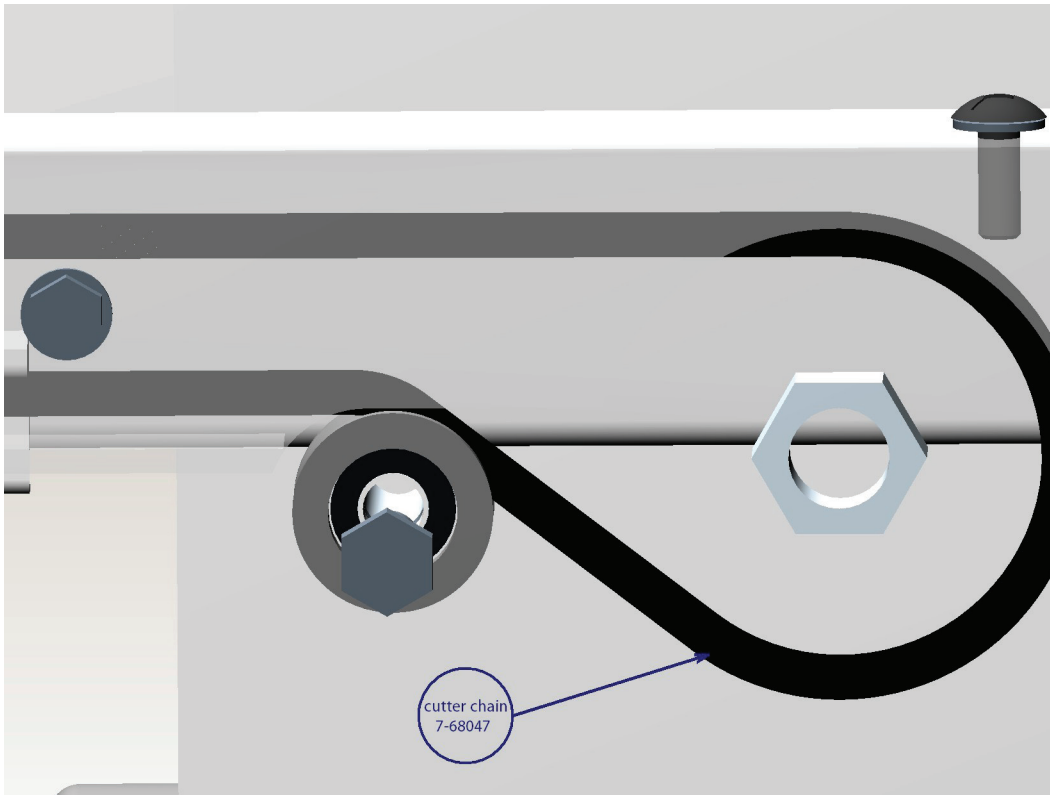
- 1 7-1120 Cutter Crank
- 2 007-0020 Bushing
- 3 7-1150 Cutter Crank Bolt
- 4 7-1660 Chain Cover
- 5 002-0051 Bolt
- 6 7-1160 Crank Handle
- 7 004-0044 Lock Nut



- 1 7-43434 Chain Idler
- 2 001-0114 Bolt

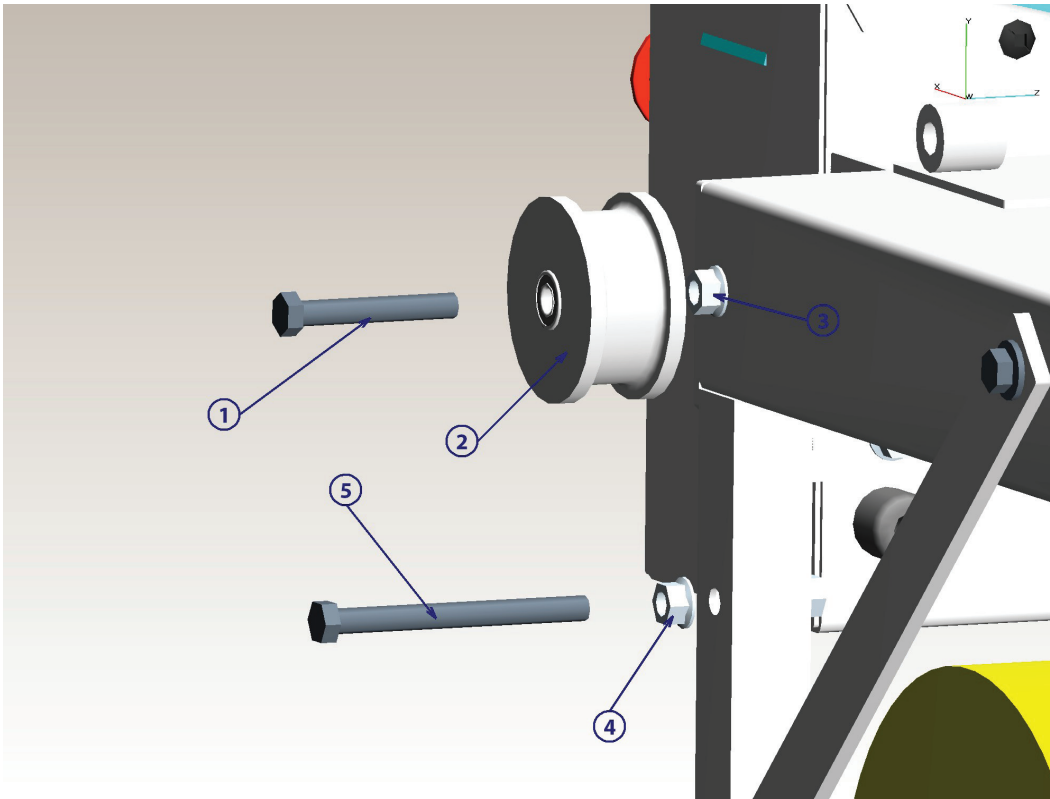


# Carousel Mate Components



- 1 7-43434 Chain Idler
- 2 001-0114 Bolt

# Carousel Mate Components



- 1 005-0120 Bolt
- 2 7-51600 CM Plastic Finish Guide Track Wheel
- 3 004-0015 Nut
- 4 004-0015 Nut
- 5 004-0015 Nut
- 6 001-0255 Bolt
- 2-52154 Carousel Mate track with guides

# OTT Components



410-0045 SWITCH ON/OFF MASTER W/BYPASS LOCK

410-0009 KNOB SPEED CONTROL (5150)  
410-0013 SPEED CONTROL



- 410-0024 Visonic Keypad July 2000
- 410-0014 IEI Keypad 212i July 2000 - July 2006
- 410-0104 IEI Bubble Keypad 212e July 2006 - present



# OTT Components



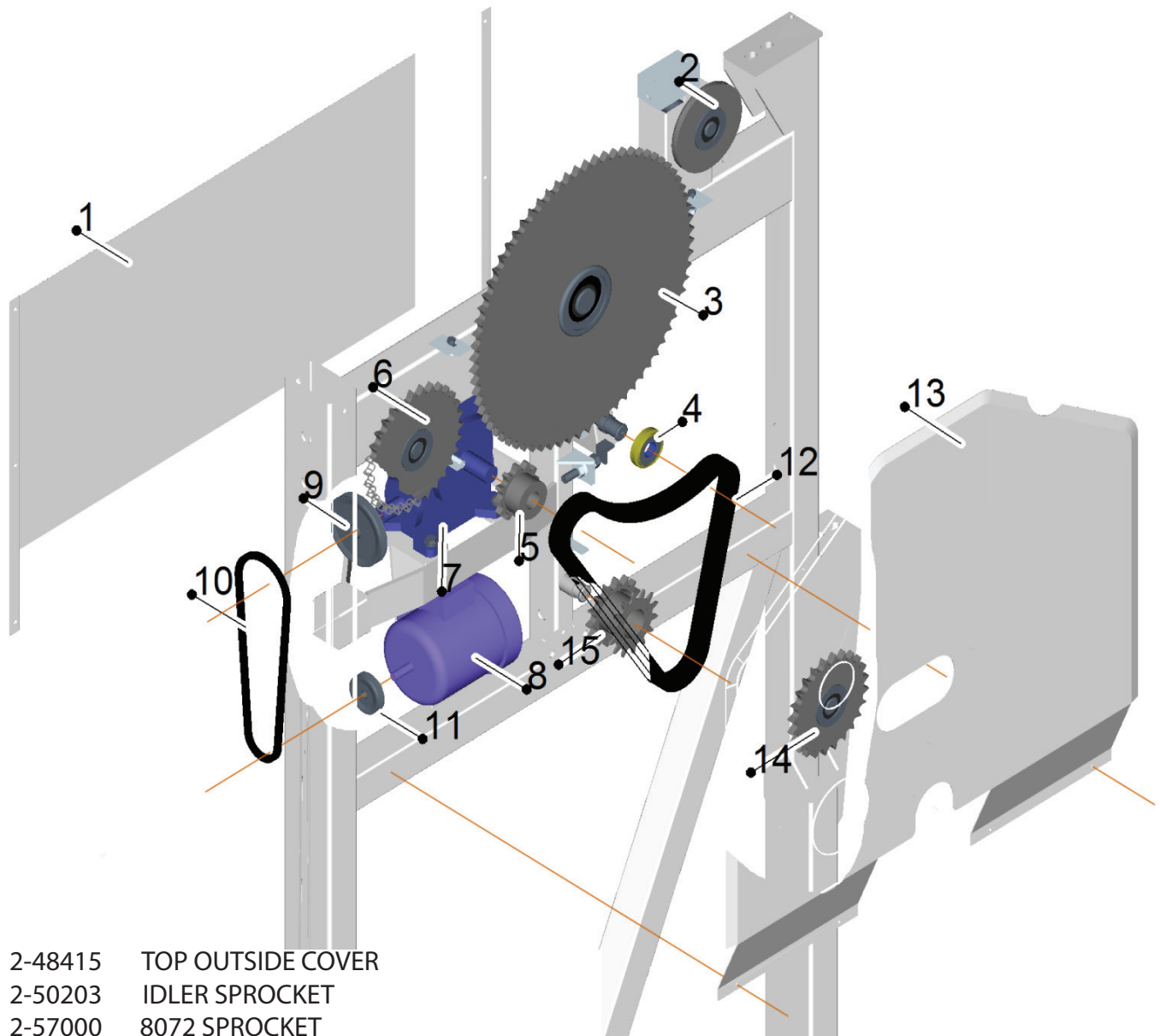
403-0014  
5 HP Variable Frequency Drive

401-0073 Connector Flex Kit

This kit will be needed with every VFD unless they have the same one



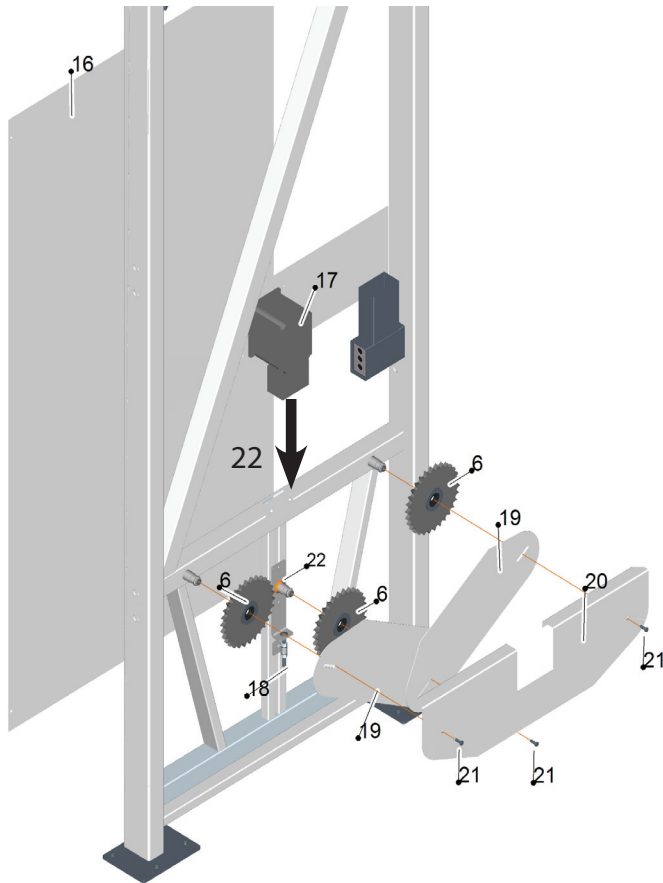
# OTT Components



- |     |          |                              |
|-----|----------|------------------------------|
| 1   | 2-48415  | TOP OUTSIDE COVER            |
| 2   | 2-50203  | IDLER SPROCKET               |
| 3   | 2-57000  | 8072 SPROCKET                |
| 4   | 2-60860  | CHAIN IDLER                  |
| 5   | 120-0136 | DRIVE SPROCKET               |
| 6   | 120-0001 | 10" SPROCKET                 |
| 7   | 107-0013 | 80/60-1 GEARBOX              |
| 8   | 407-0007 | MOTOR 3PH 1.5HP              |
| 9   | 115-0043 | PULLEY BK57                  |
| 10  | 102-0054 | V-BELT B38                   |
| 11  | 115-0047 | PULLEY BK34                  |
| 12  | 105-0049 | #80 DRIVE CHAIN 60" WITH CON |
| 13a | 2-50320  | TOP INSIDE COVER - LEFT      |
| 13b | 2-50321  | TOP INSIDE COVER - RIGHT     |
| 14  | 120-0049 | 8024 IDLER SPROCKET          |
| 15  | 2-47223  | DRIVE SHAFT COUPLER          |

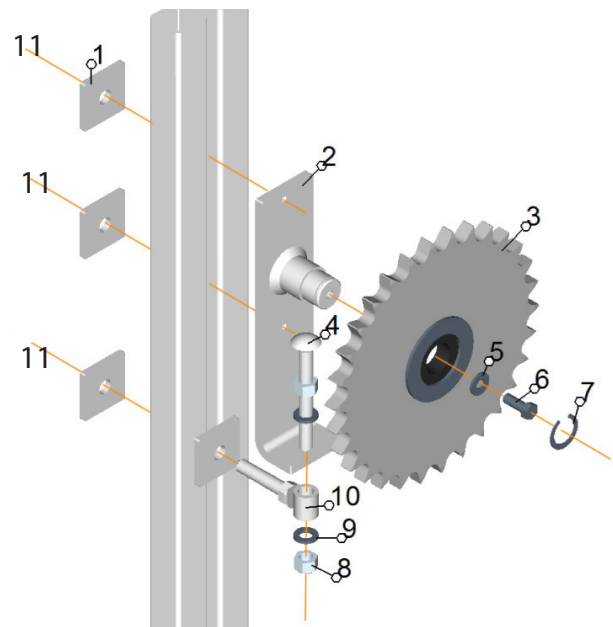
**CAUTION**  
**DO NOT REMOVE THE DRIVE CHAIN**  
**OR GEARBOX WITHOUT SECURING**  
**THE LOAD**  
*refer to the instruction in the service*  
**manual**

# OTT Components



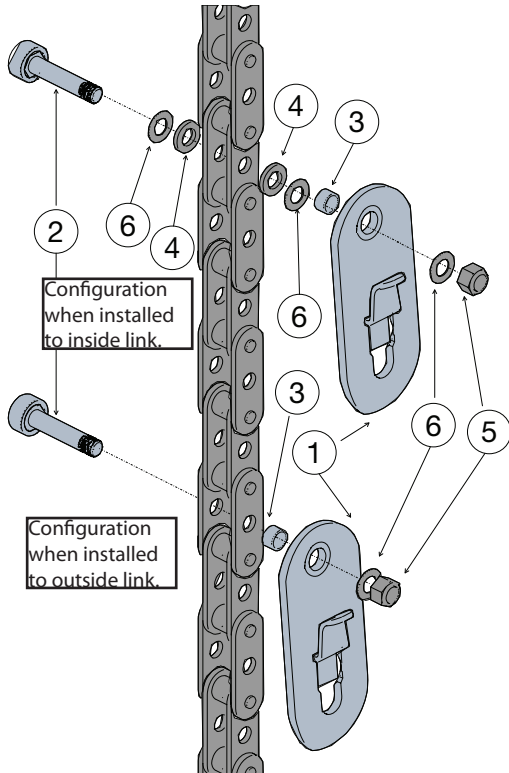
- 6 120-0001 10" SPROCKET
- 16 2-50442 BOTTOM OUTSIDE COVER
- 17 403-0014 5HP VFD
- 18 001-0049 3/8 CARRIAGE BOLT
- 19 2-48417 BOTTOM INSIDE COVER 2
- 20 2-55460 BOTTOM INSIDE COVER
- 21 001-0114 3/8 X 1 HEX BOLT
- 22 410-0073 VFD CONNECTOR FLX KIT
- Not shown 003-0113 Washer 3/8 x 3/4 x 11G

- 1 2-45153 SLIDER WASHER
- 2 2-45148 BOTTOM TIGHTNER SLIDE
- 3 120-0001 8030 SPROCKET
- 4 001-0076 BOLT CARR 1/2x5 GR5 UNC TAP
- 5 003-0113 WASHER 3/8x3/4x11G.
- 6 001-0114 BOLT HEX 3/8 X 1 GR5 UNC
- 7 116-0005 SNAP RING
- 8 004-0046 LOCK NUT
- 9 003-0017 WASHER 1/2 X 7/8 X 1/8"
- 10 2-40450 CHAIN TIGHTNER ANCHOR
- 11 001-0072 BOLT CARR 1/2x3 GR5 UNC (not shown)

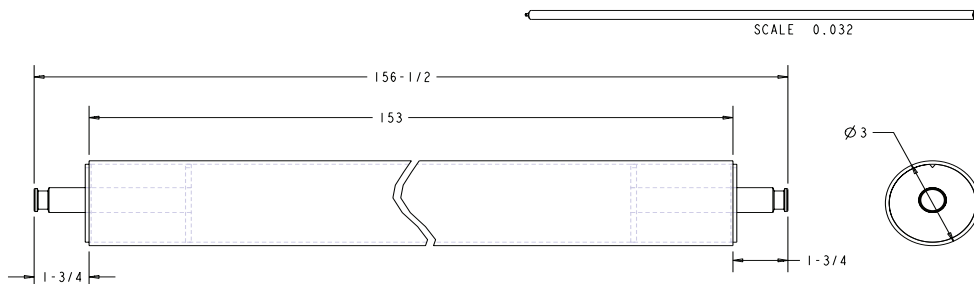


# OTT Components

## Menards OTT Carousel Hook, Hardware



| Key | Description   | Item_no  |
|-----|---|----------|
| 1   | OTT carousel hook W/ bolt kit<br>(includes items 2,3,4,5) | 111-0286 |
| 1   | OTT carousel hook with bushing<br>(includes items 3,4,5)  | 111-0094 |
| 2   | C55 ott carousel bolt                                     | 2-44485  |
| 3   | Bushing crsl hook   | 007-0062 |
| 4   | Wshr flat 7/16 x 0.118 Thk                                | 003-0041 |
| 5   | Nut lock 7/16 steel I9 unc                                | 004-0088 |
| 6   | Wshr flat 7/16 0.032 Thk                                  | 003-0015 |
|     |   |          |



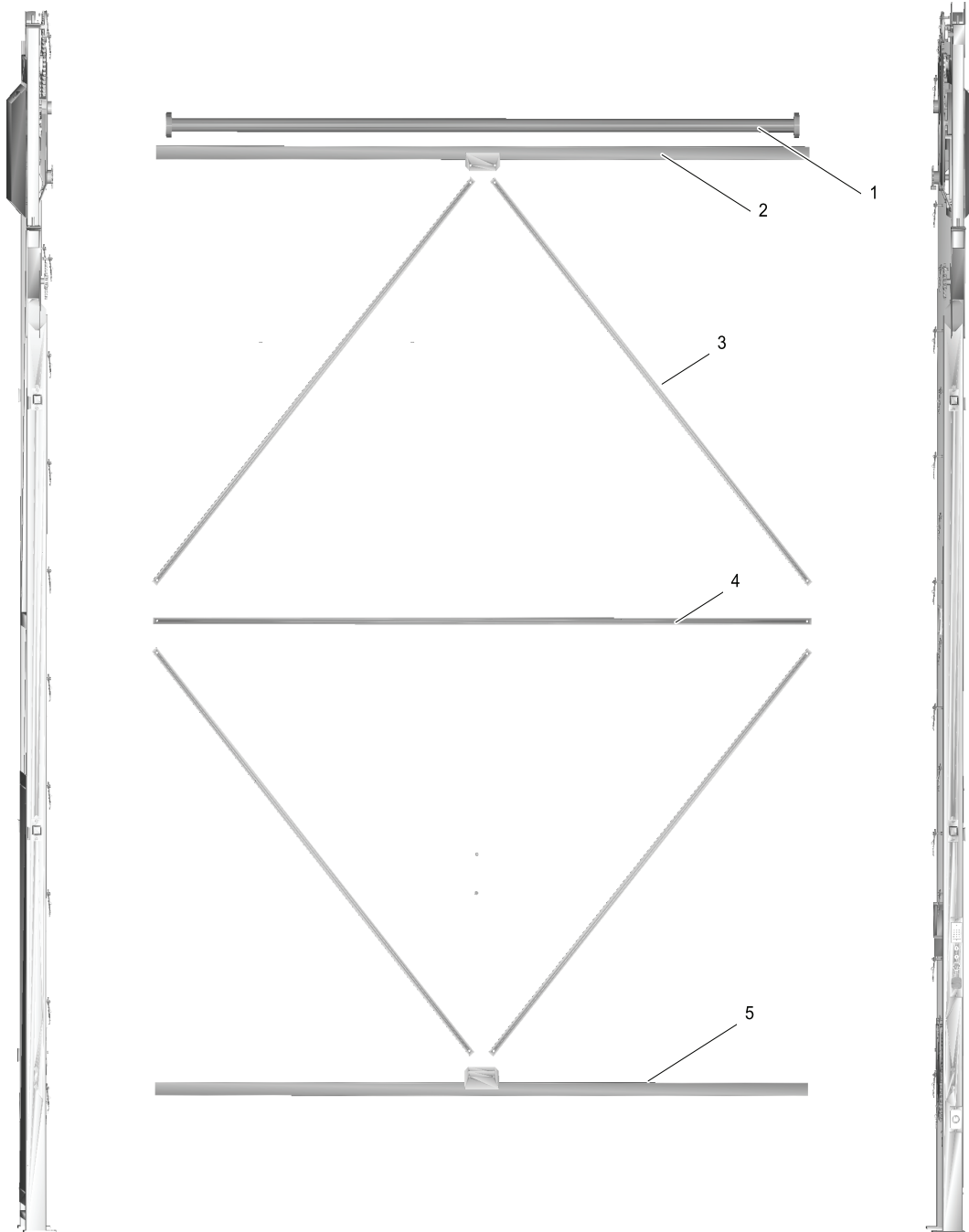
1. 2-45086 Roller, complete 12ft, 3 O.D.

## NOTE

Carpet Carousel roller used these dimensions as of July 22nd 1997  
 Vinyl Carousel roller used these dimensions as of June 22nd 1998

Any roller needed before these dates and for other carousels should have a carpet poll order form filled out to verify the correct size

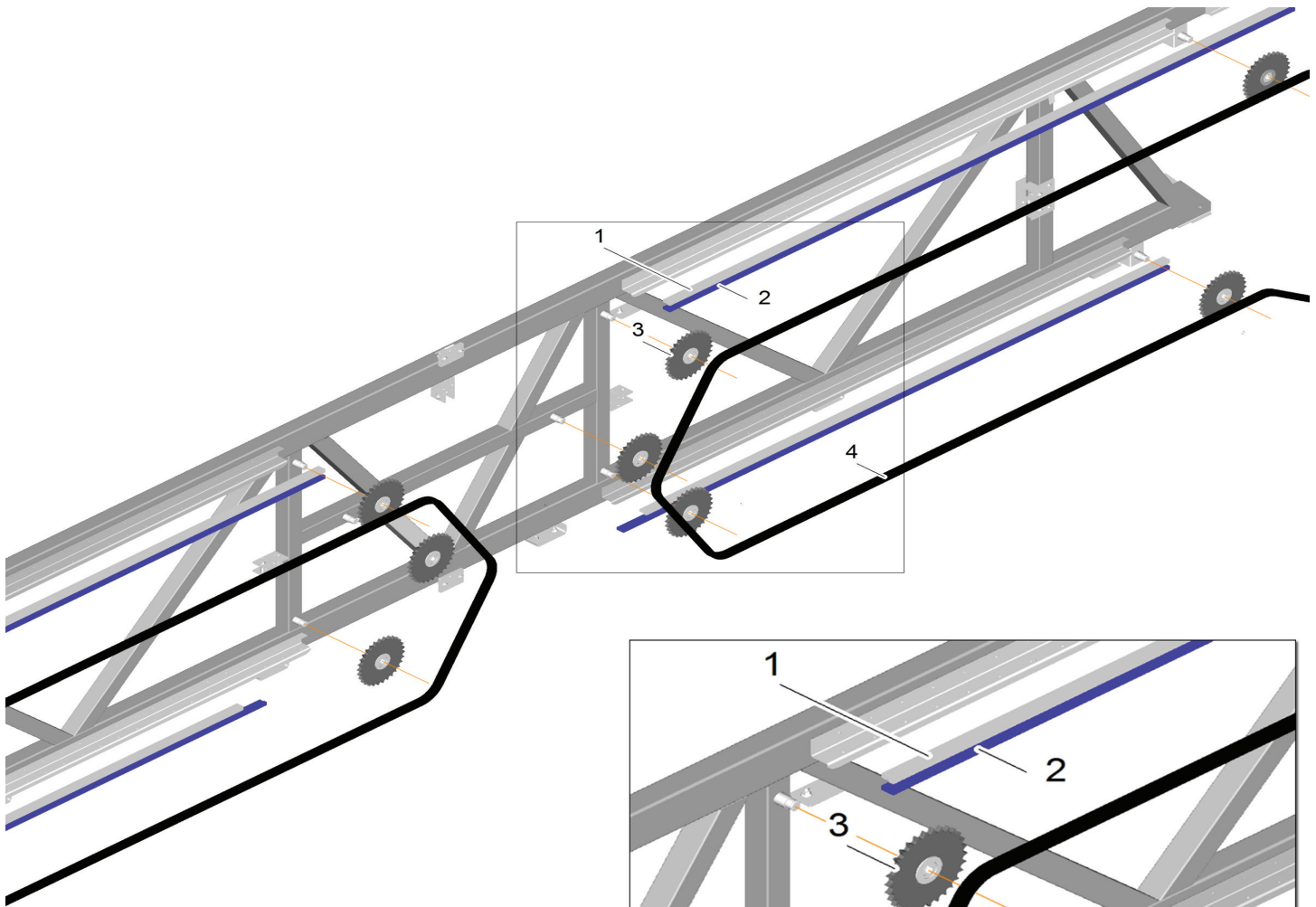
# OTT Components



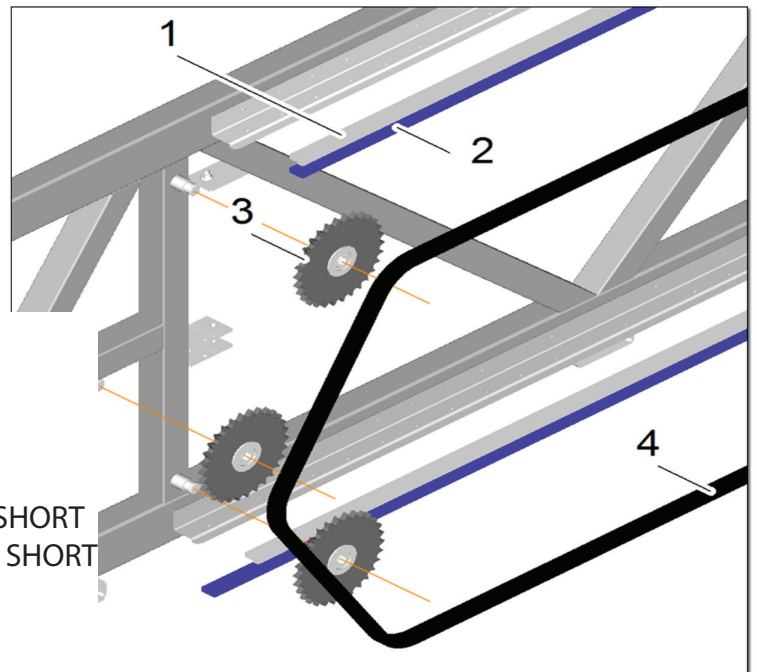
- 1 2-48015 DRIVE SHAFT
- 2 2-47280 TOP CROSS BRACE
- 3 2-50216 DIAMOND BRACE
- 4 2-49617 DIAMOND HORIZONTAL
- 5 2-47281 BOTTOM CROSS BRACE



# OTT Components



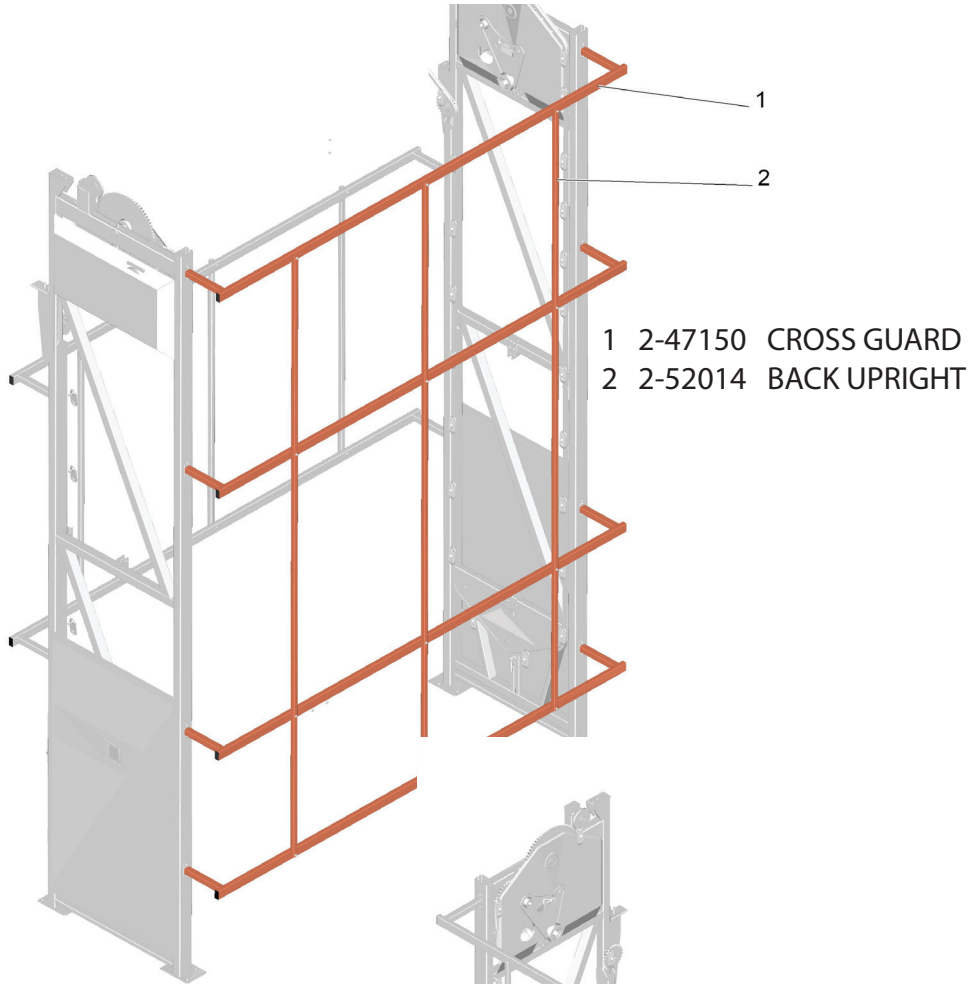
- 1 2-52066....UPPER RT MENARDS TRACK GUIDE  
2-52068....UPPER LFT MENARDS TRACK GUIDE
- 2 2-52067..LOWER RT MENARDS TRACK GUIDE  
2-52069...LOWER LFT MENARDS TRACK GUIDE  
2-52070...LOWER RT MENARDS TRACK GUIDE SHORT  
2-52071...LOWER LFT MENARDS TRACK GUIDE SHORT
- 3 120-0001 8030 SPROCKET
- 4 2-52373 OTT\_CHAIN\_ASM\_62 RT  
2-52375 C55\_OTT\_CHAIN\_ASM 66 LEFT  
2-52374 C55\_OTT\_CHAIN\_ASM 66 RT  
2-52372 C55\_OTT\_CHAIN\_ASM\_62 LEFT



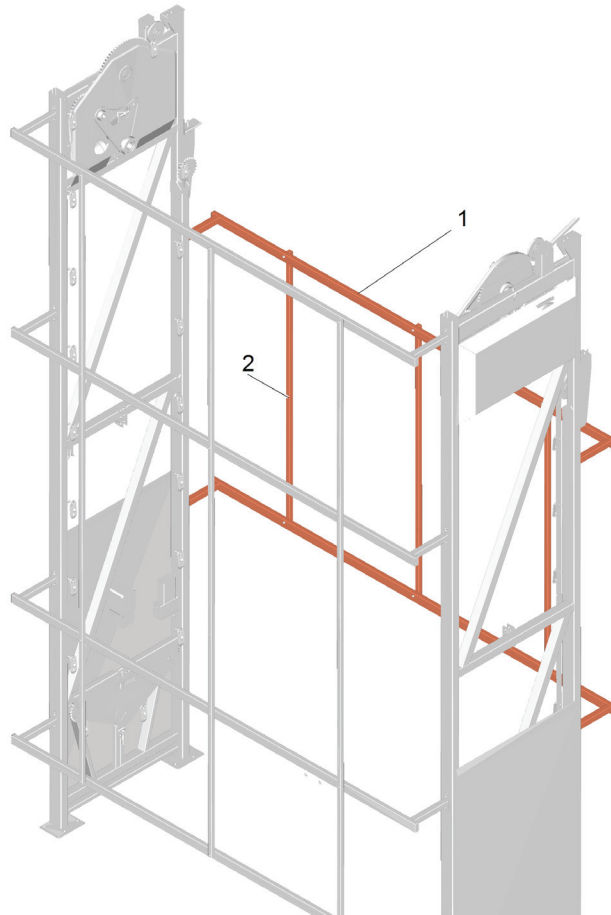
## NOTE

All sprockets on bridge are the same size

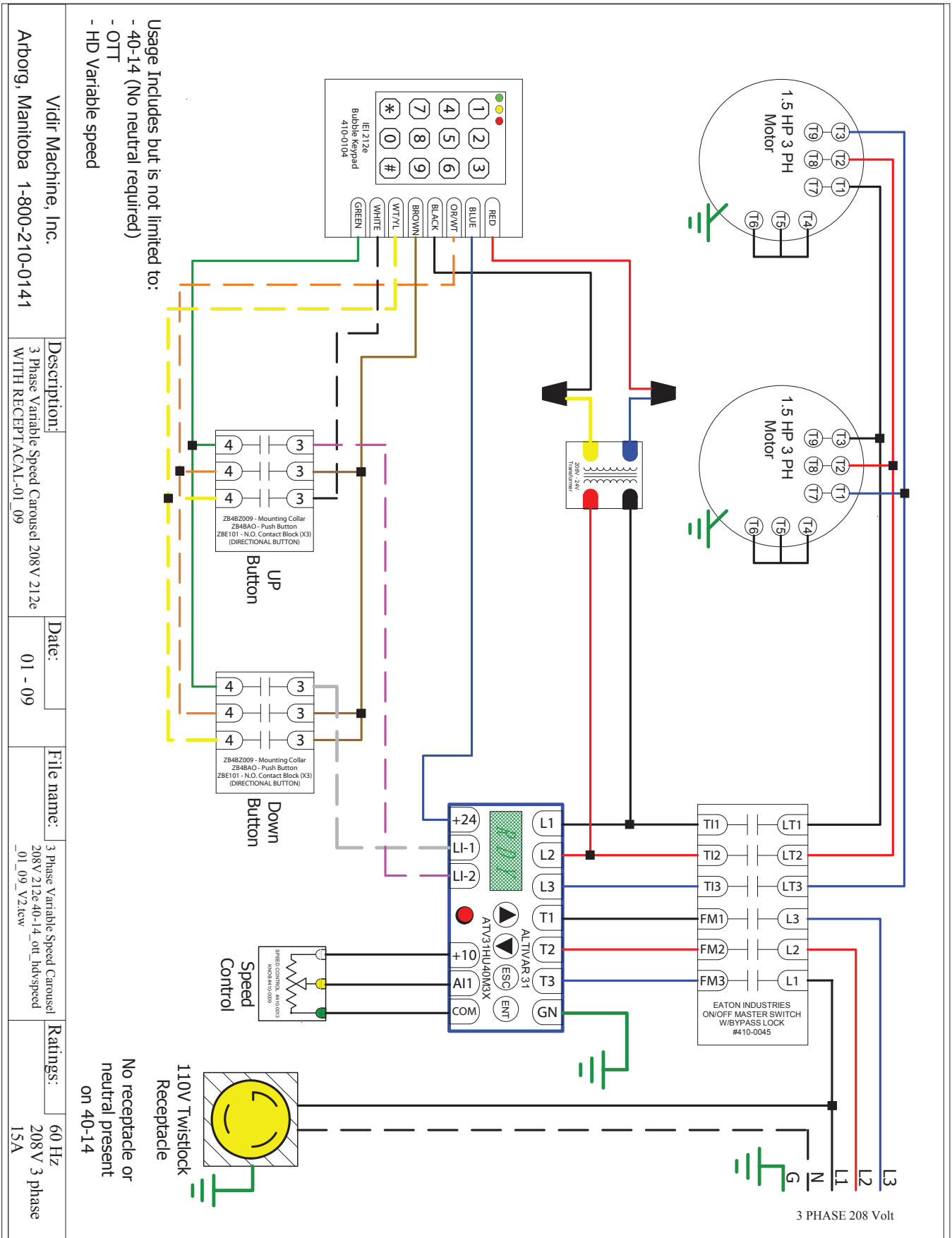
# OTT Components



- 1 2-47150 CROSS GUARD  
2 2-50213 FRONT UPRIGHT



# WIRING SCHEMATIC



Vidir Machine, Inc.  
 Arborg, Manitoba 1-800-210-0141

Description: 3 Phase Variable Speed Carousel 208V 212e WITH RECEPTACAL-01\_09

Date: 01 - 09

File name: 3 Phase Variable Speed Carousel 208V 212e-40-14\_ott\_hdvspeed\_01\_09\_V2.txd

Ratings: 60 Hz 208V 3 phase 15A

# **WARRANTY & LIABILITY**

## **Vidir Solutions Inc. Warranty Agreement and Limitation of Liability**

1. Vidir Solutions Inc. ("Vidir") warrants solely that the equipment shall be free from any defect due to faulty workmanship or material deficiency at the time of delivery to the buyer thereof (the "Buyer") and for a period of one year therefrom.
2. All work except minor repairs or adjustments to the equipment furnished on an emergency basis, will be performed during regular working hours. If the Buyer requests that repair work be performed outside of regular working hours, it is the responsibility of the Buyer to pay the difference between regular and premium labour rates at the then standard hourly billing rate.
3. This warranty shall be voided by any modifications to the equipment or any use of the equipment for any purpose other than that for which it was specifically intended.
4. This warranty is the only warranty made by Vidir. The Buyer hereby expressly waives any obligations or liability, including liability for loss or damages due directly or indirectly, any obligations including, without limitation, loss of use, revenue, or profit, shipping and handling, and injury to person or property.
5. It is the responsibility of Buyer to know, understand and comply with the work and safety laws and regulations in effect and governing Buyer's use of the equipment. To the extent governing law requires inspections, records keeping and/or after-purchase modifications to the equipment, it is the responsibility of the Buyer to arrange for and comply with such requirements and any associated costs are the sole responsibility of the Buyer. Vidir assumes no responsibility or liability for Buyer's performance under or compliance with such laws and regulations.
6. If the equipment is found by the Buyer to be defective, the Buyer must notify Vidir within a period of 30 days of discovery of the defect.
7. The Buyer is expected to provide access to all equipment covered by this warranty. Vidir shall not be responsible for any expense incurred in removing, replacing, or refinishing any part of the building structure necessary for the performance of Vidir's obligations under this warranty.
8. In the event that any alterations, additions, adjustments or repairs are made by others without Vidir's prior written consent, Vidir may, at its option, immediately terminate this warranty by providing written notice to the Buyer.
9. In the event Vidir is required to make emergency calls, repairs and/or replacements under this warranty occasioned by the Buyer or any user's negligence, improper operation or misuse of the equipment or by fire, explosion, flooding, the elements, strikes, labour troubles, vandalism, riots or civil commotion, or by any cause beyond Vidir's control. The Buyer shall reimburse Vidir for such emergency calls, repairs and/or replacements in accordance with the then current rates for such services.
10. Vidir's liability for injury to persons or property shall, in any event, be limited to that caused directly by its negligence. Vidir shall not be liable, however, on any account, for any damage or loss to the Buyer or its dealers, representatives, affiliates or agents resulting from business interruption, inconvenience, loss of profits, or special or, indirect or consequential damage. Vidir shall not be deemed to guarantee or warrant the continuing operation or operating efficiency of the equipment covered, nor shall Vidir be liable for any breakdowns thereof or for any damage to any other property of the Buyer not covered by this warranty but resulting from any breakdowns in or operating mishaps of the equipment covered.
11. Should any payment due by the Buyer become thirty days or more delinquent, Vidir may terminate this warranty by written notice, and all moneys owed Vidir shall be immediately payable on demand.
12. This warranty is not transferable or assignable by the Buyer.
13. Vidir reserves the right to determine, in its sole and absolute discretion the best means and methods to be employed for any corrective or repair work deemed necessary by Vidir pursuant to this warranty.