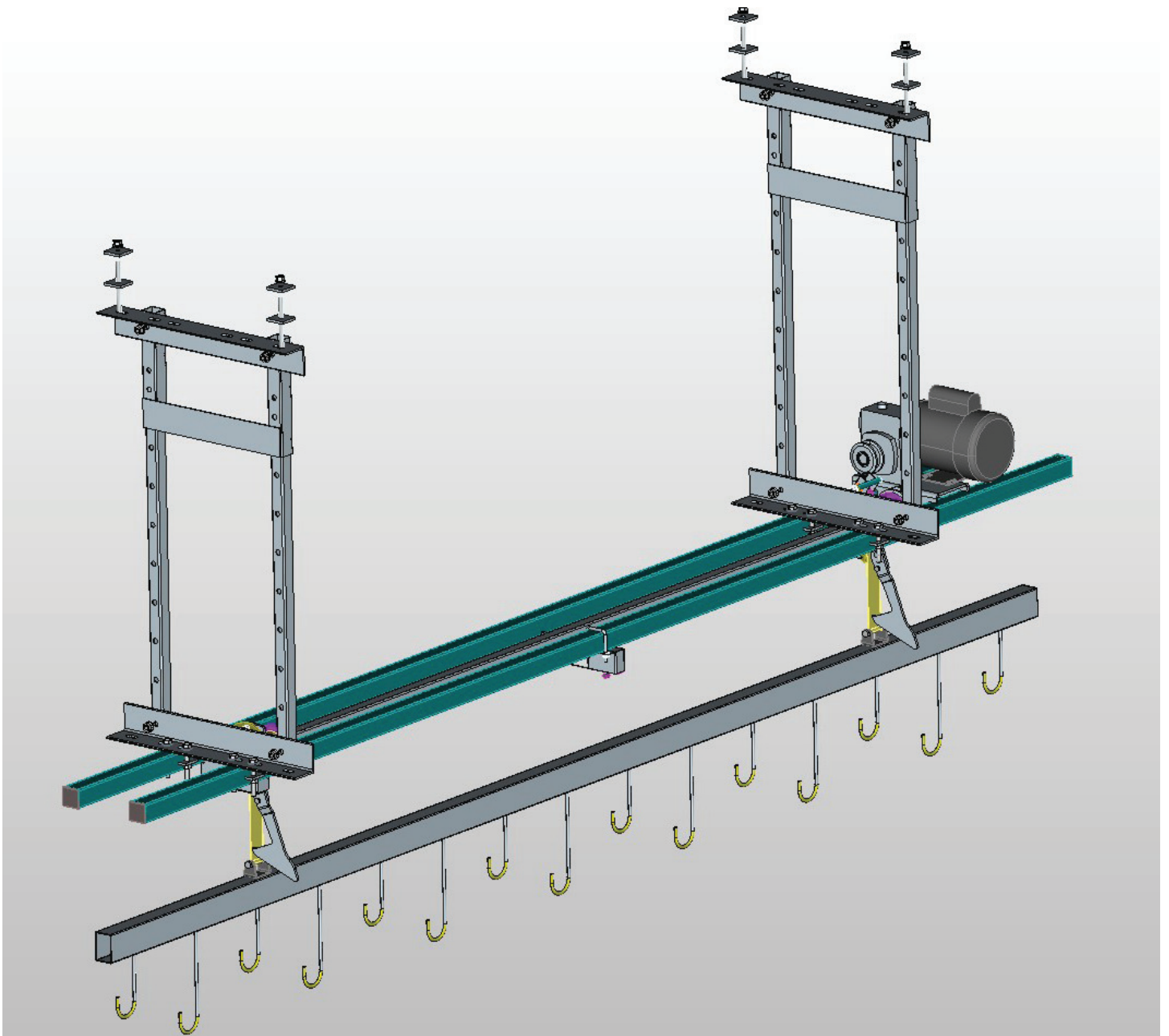


# OSS 12 FT BIKE

## Operator's Manual



# TABLE OF CONTENTS

**INTRODUCTION** ..... 2

**SAFETY**

- Important Safety Instructions ..... 3
- Safety Hazards ..... 4
- Grounding Instructions..... 4
- Safety Features..... 5
- Machine Specification and Limits ..... 5
- Machine Overview..... 7

**INSTALLATION** ..... 8

**OPERATING INSTRUCTIONS**..... 10

- Instructions ..... 10
- Operating Precautions ..... 10

**MAINTENANCE**

- Troubleshooting..... 11
- Preventative Maintenance Checklist..... 13

**MACHINE COMPONENTS**

- Electrical ..... 19
- Machine ..... 20

**WIRING SCHEMATIC** ..... 21

**WARRANTY & LIABILITY**

- Vidir Machine Inc. Warranty Agreement and Limitation of Liability..... 22

# INTRODUCTION

This machine has been carefully designed and constructed to provide you with many years of dependable service. It has been built to meet or exceed current U.L. or C.S.A. standards. With proper care in operation and maintenance, this machine will assist you in maximizing your efficiency.

To ensure the utmost value and performance from your machine, please read this manual carefully to be sure correct operation procedures are followed.

This manual provides you with operation, troubleshooting, and maintenance procedures for your machine. However, if help is needed or if any of these procedures are unclear, please contact Vidir at 1-800-210-0141.

## SERIAL NUMBER

Please be sure to record the serial number for any future service calls and parts ordering.

Serial No. \_\_\_\_\_

## IMPORTANT CAUTION NOTICE:

Vidir has made every effort to protect operators and others from injury due to mechanical parts movement and electrical safety. As with any mechanical device, the operator is responsible to inspect the condition of the machine prior to use and adhere to safe operating procedures at all times.

**A factory approved Preventative Maintenance is recommended every 12 months or 100 hours, whichever comes first.**

Information in this document is proprietary, confidential, and property of Vidir Machine Inc. Disclosure or duplication of this material is prohibited except by authorization of Vidir Machine Inc.

**service@vidir.com**

### Head Office

#### Vidir Machine Inc.

Box 700  
Arborg, Manitoba, Canada  
R0C 0A0

Service: 1-866-821-2647

Toll Free: 1-800-210-0141

Phone: 1-204-364-2442

Fax: 1-204-364-2454

Service Fax: 1-204-364-3072

### U.S. Office

#### Vidir Inc.

19 East Lehman St.  
Lebanon, PA  
17046 USA

Service: 1-866-821-2647

Toll Free: 1-866-898-4347

Phone: 1-717-270-1000

Fax: 1-717-270-1001



# **SAFETY**

## **Important Safety Instructions**

Read this manual carefully to ensure familiarity with the controls and the proper use of the equipment.

The warnings and precautions contained in this manual **DO NOT** cover all potential dangers, and hazards that may be encountered.

This manual is intended to provide basic safety guidelines for proper operation, maintenance, and servicing of the machine.

### **WARNING – Risk of injury**

- Installation and service of this machine should be performed by qualified service personnel.
- Only properly trained service personnel should have access to the interior components of the machine.
- Electrical connections should be performed by qualified electricians.
- Operation must be performed by trained personnel. Never allow children or unauthorized persons to operate the machine.
- **DO NOT** post the security password where unauthorized users will have access to it.

### **DANGER – To reduce the risk of electrical shock:**

- Keep cord away from heated surfaces or areas where it can be easily damaged.
- Do not change current limit ratings of overload protectors. For further instruction please contact our service line.
- Turn all switches to the off position and disconnect power to the machine before cleaning, maintenance, or repairs.
- Risk of electrical shock – Connect this machine to a properly grounded outlet only. See grounding instructions.
- Keep the area of operation clear of all persons and potential hazards.
- Always shut off the main power switch before servicing the machine.
- Keep all guards and shields in place

Use this machine only for its intended purpose as described by these instructions.

Do not use attachments not recommended or approved by the manufacturer.




Never operate this machine if it has been damaged, has a damaged electrical cord, or if it is not working properly. Keep all guards and shields in place.

Keep area clean and organized during operation.

**For further instruction please contact our service line.**

# **SAFETY**

## **Safety Hazards**

	Safety Hazard - Entanglement	- Loose clothing or jewelry could become entangled or drawn in
	Safety Hazard - Crushing/Rolling	- stored items may present a hazard of crushing or rolling over toes or hands when loading or unloading machine.
	Safety Hazard - Heavy Lifting	- Use proper lifting technique, and additional help to load material roll onto wall rack.

Cease all operation and lock out machine in any case where the machine is not operating as designed and call Vidir Service.

## **Grounding Instructions**

This product must be grounded. If it should malfunction or breakdown, grounding provides a path of least resistance for electric current to reduce the risk of electric shock. This product is equipped with a cord having an equipment-grounding conductor and a grounding plug. The plug must be plugged into an appropriate outlet that is properly installed and grounded in accordance with all local codes and ordinances.

**DANGER** – Improper connection of the equipment-grounding conductor can result in a risk of electric shock. Check with a qualified electrician or serviceman if you are in doubt as to whether the product is properly grounded. Do not modify the plug provided with the product. If it will not fit the outlet, have a proper outlet installed by a qualified electrician.

This product is for use on a circuit having a nominal rating of more than 120 volts and is factory-equipped with a specific electric cord and plug to permit connection to a proper electric circuit. Make sure that the product is connected to an outlet having the same configuration as the plug. No adapter should be used with this product. If the product must be reconnected for use on a different type of electric circuit, the reconnection should be made by qualified service personnel

# **SAFETY**

## **Safety Features**

- Upper & Lower Limit Stop Switch
- Mechanical Free Fall Safety Brake
- Deep Hooks for better bike containment
- Standard upper safety latch system
- (Optional) activation strobe light
- (Optional) activation beeper
- (Optional) security keypad

## **Machine Specification and Limits**

### **DIMENSIONS, WEIGHT & ELECTRICAL**

- 12' long x 10 1/2" wide x 14 1/2" high
- System weight with mounting hardware = 250 lbs.
- 110 volt /15 amp dedicated outlet required

### **CAPACITY**

- 15 Hooks staggered 4 inches in height
- 50 lbs. per hook weight capacity
- 600 lbs. total lifting capacity
- 9 feet vertical travel on strap (optional 11 and 13 foot travel)

### **CONTROLS**

- Individual Unit Selector Switch Box (not applicable for single unit installations)
- (Optional) code activated security keypad with timer
- Directional Control System

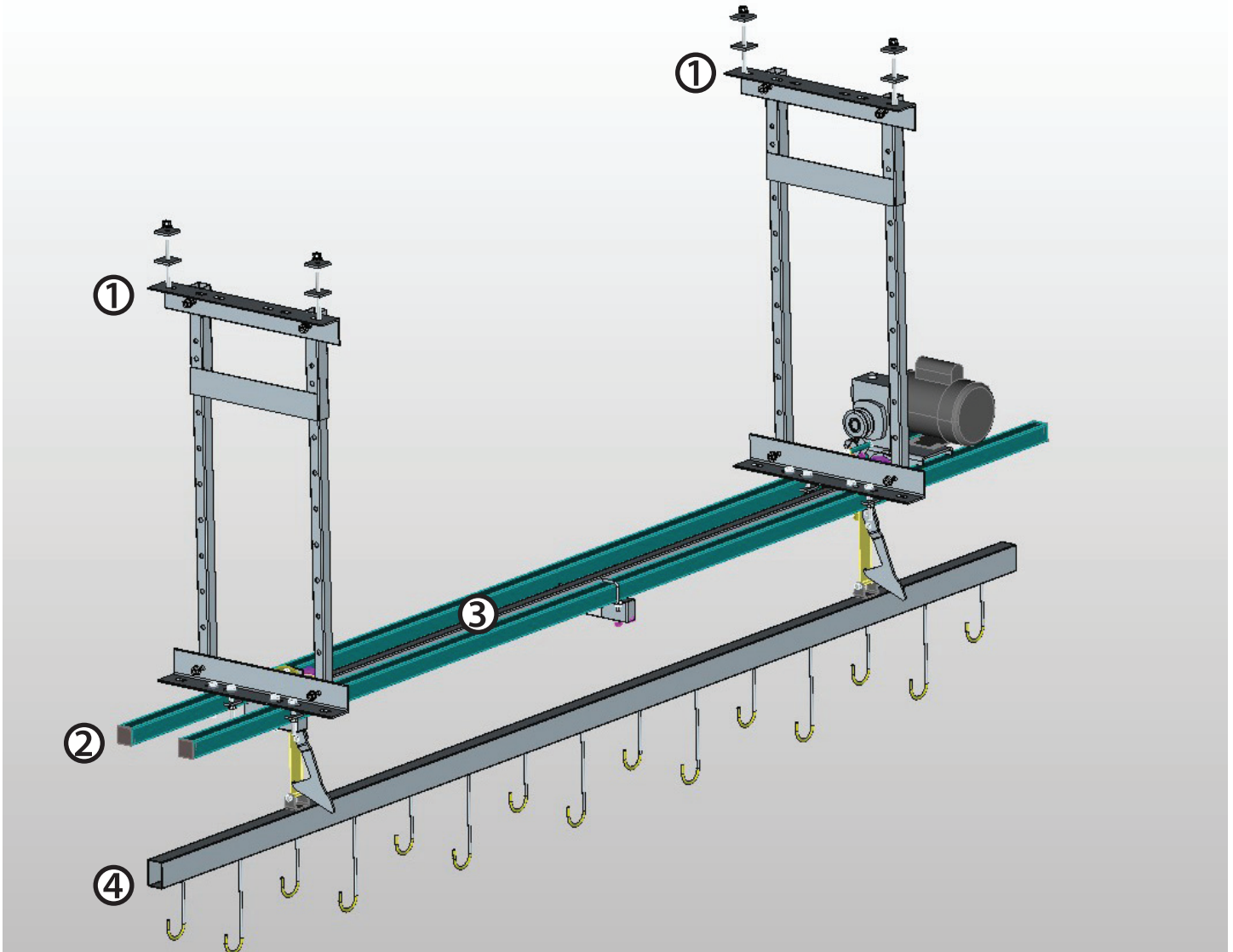
# **SAFETY**

## **Machine Specification and Limits (con't)**

Input	220v single phase 15 amp  Dedicated circuit required  3 wire – 2 hot, 1 ground
Motor	3/4 HP 1725 RPM  220v single phase, 15 amp  Leeson with electric brake
Power Cord	15' Power cord w/twist lock NEMA L6-20p
Control	Pendant station with up and down buttons  24 volt class 2 control system  Upper and lower limit switches
Gear Reducer	Canimex CC60-L-56C  Ratio 50:1  1" output shaft  Final reduction to a 90 to 1 ratio is obtained by dual sprockets and chains
Frame	Welded 2"x2" 100 wall square steel tubing  (cross rafters for perpendicular mounting provided)
Lifting	Two 5,000 lb. nylon lifting straps across the 12' unit  Two nylon strap take up spools each supported by two  #206 bearing- at least dynamic 3150 lbs, sitting 1770 lbs
Carriers	Bike Bar - 12' of 2" x 3" steel tubing with 15 rubber coated steel hooks welded 10" on centre
Operating Space Required (Per unit - loaded)	Length 14' x Width 6' x Truss to floor 14'
Load Capacity	750 lbs stall weight lifting capacity

# MACHINE COMPONENTS

## Machine Overview



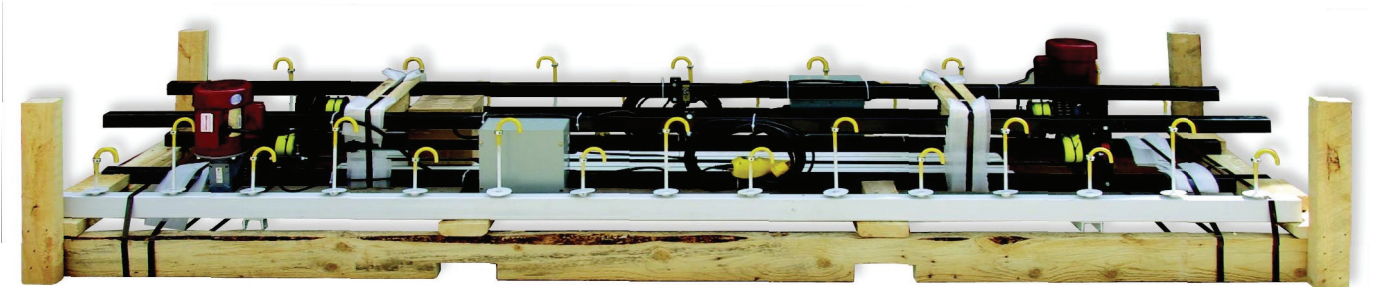
Item #	Description	Part No.
1	Rafter suspension kit	5-43795
2	Main frame	5-5120
3	Drive shaft	5-5151
4	Bike bar	5-1685



# INSTALLATION

## 1. UNCRATE UNIT

- a) Uncrate unit and remove all parts from crate.
- b) Check packing list to ensure all parts are enclosed and have arrived undamaged.



- c) Clear area where unit is to be installed.

### Packing List

- 1 12 foot overhead bicycle lift system main frame with components
- 1 12 foot bicycle bar with hooks
- 12 3 3/4" flats
- 6 1/2" x 5" hexagon bolts
- 6 1/2" flange nuts
- 2 7/16" x 4" hexagon bolts
- 4 7/16" regular hex nuts (2 per bolt)

## 2. POSITION AND ATTACH THE UNIT IN PLACE

- a) Place unit on the floor next to area of attachment.
- b) Lift unit into position with help of lift truck or scissor lift. Unit must be installed with the motor on top.
- c) Unit must be placed underneath the structure where it is to be attached.
- d) It is recommended that the unit be bolted in place at each end and in the middle with no more than 2 ft. of the unit ever suspended off the end of the last attachment.
- e) Frame extensions are available to span areas beyond the reach of the frames main supports.

# INSTALLATION

## 3. POWER UP THE UNIT

a) Plug the cord into a dedicated 110 volt/15 amp receptacle. Enter code into security keypad to activate system (if applicable). Press the up and down buttons to verify power is flowing to the unit.

b) Machine controls should be attached to a secure and stationary location four to six feet off the floor. The controls should be positioned so the operator is not standing directly below the unit but has a clear view of the entire area while the unit is in operation.



Directional Control

## 4. ATTACH BIKE BAR TO LIFTING STRAP

a) Enter code into security keypad (if applicable). Press down arrow to lower straps for attachment to bike bar. (Caution: Do not completely un-spool straps.)

b) Attach the bike bar by inserting the 7/16" x 4" bolt through each strap and strap buckle and fasten two (2) 7/16" nuts to each bolt..

**IMPORTANT:** Make sure the nuts are pointing in the direction of the motor up above.

c) Run the unit a short distance up and down to verify the straps are spooling up straight and the bar is lifting level.

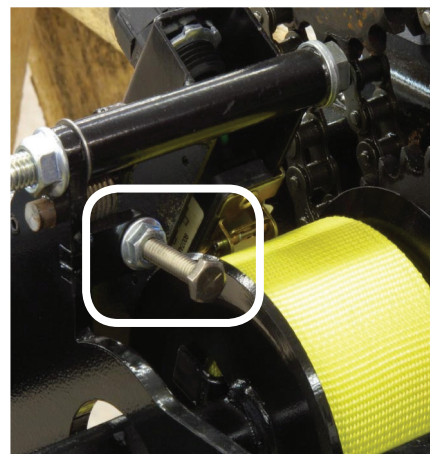


Lifting Strap

## 5. SET LIMIT SWITCH

a) Lower limit switch is preset at factory. However, if a different lower bike bar setting is desired, the setting may be changed by turning the limit switch adjusting screw located above the motor end strap. Turn the screw counter clockwise for lowering. Turn clockwise for raising the limit. Never allow for less than 1 1/2 wraps around the spool drive.

b) Run the machine a few times to verify every thing is operating as expected. If for any reason you feel the unit is not operating properly, stop running the unit and refer to your trouble shooting guide or call our Service Dept.



Limit Switch

# OPERATING INSTRUCTIONS

## Instructions

1. System should only be operated by designated personnel.
2. Keep the area below and around the system clear.
3. Enter the security code into the keypad (if applicable).
4. Select the unit to be operated on the selector switch (does not apply to single unit installations).
5. Raise or lower the bike bar by pressing the up or down button on the directional control system.

## Operating Precautions

1. Check area for obstructions prior to operating.
2. Continuously monitor the system and the surrounding area while system is in motion.
3. Use caution to ensure bikes are not coming in contact with any other items while in motion.
4. Ensure the tire is fully seated within the "J" hook.
5. Distribute the bikes evenly on the system keeping a "balanced load".
6. Do not overload the unit - **weight capacity** is 50 lbs. per hook/600 lbs. per unit.

# MAINTENANCE

## Troubleshooting

Symptoms/Problems	Solution
Bike lift will not move up or down and there is no sound when the up or down button is pressed.	<ol style="list-style-type: none"> <li>1. Ensure that the upper limit switch is in the ON position</li> <li>2. Check the breaker in the building electrical panel (trip all the way off and then all the way on).</li> <li>3. Check that unit is plugged in.</li> <li>4. Check lower limit switch to ensure it is not tripped</li> <li>5. Reset the overload protection switch (located on the rectangular box positioned on the side of the motor) by pressing the button firmly (use the handle of a screwdriver).</li> </ol>
Bike lift makes a chattering banging noise when moving up or down.	<ol style="list-style-type: none"> <li>1. Ensure there is plenty of grease on the rotor and crash brakefinger.</li> <li>2. Check to insure there is a minimum amount of side play in the crash brake support housing.</li> <li>3. Check that the crash brake finger swings back and forth freely.</li> </ol>
Bike lift bar travels up but not far enough to trip the upper limit switch and shut off the beeper.	<ol style="list-style-type: none"> <li>1. Adjust the upper limit switch lever by bending it down</li> <li>2. Check if there is an obstruction that prevents the bike bar from raising high enough.</li> <li>3. Check that the load is evenly distributed and that the bike bar is hanging level .</li> </ol>
Up & Down direction is reversed	<ol style="list-style-type: none"> <li>1 Check for proper strap installation</li> <li>2 Verify the up/down switch is wired according to the diagram</li> <li>3 Verify motor is wired according to diagram</li> <li>4 Verify electrical box wiring according to the diagram</li> </ol>
Bike lift runs but stalls before reaching the upper most position.	<ol style="list-style-type: none"> <li>1. Check if unit is overloaded by removing some bikes.</li> <li>2. Ensure power supply is adequate.</li> <li>3. Check the oil level in the gearbox.</li> </ol>

# MAINTENANCE

## Troubleshooting (con` t)

Symptoms/Problems	Solution
Limit switch will not stop the unit	<ol style="list-style-type: none"> <li>1. Ensure limit switch is set properly</li> <li>2. Verify proper drive shaft rotation</li> <li>3. Check for a stuck contactor</li> </ol>
Unit will not lift the load	<ol style="list-style-type: none"> <li>1. Verify that correct voltage coming into the machine</li> <li>2. Check load is balanced and not exceeding the maximum load capacity</li> <li>3. Check to ensure that straps are not twisted or frayed</li> </ol>
Bike bar will not come low enough	<ol style="list-style-type: none"> <li>1. Adjust the lower limit switch</li> <li>2. Ensure that area below the bike bar is free of obstructions</li> </ol>

# **VIDIR OSS Preventative Maintenance Checklist**

Company	City	Province	Date of Service:
Store No.	Serial No.	Model/Type	
Service Company:		Store Signoff:(Print)	
Service Technician (Print):		Store Title:	
Service Tech Signature:		Store Signature:	

The inspection of all hooks, bolts, pins, mounting hardware, chains and the overall condition of these components are critical to ensure machine safety, and integrity of the preventative maintenance process. Initialling each line as indicated below confirms these items have been thoroughly inspected for defects.

✓ Indicates item is inspected and in good condition - ✗ Indicates item requires additional service	Service	Initials
<b>Mechanical Inspection</b>		
Inspect motor/gearbox mounting bolts, ensure they are secure.		
Check key and set screws on drive sprockets.		
Visually inspect all fasteners for damage and general condition. Tighten if loose.		
Check drive bolts, crown nuts and cotter pins.		
Check alignment and operation of sprockets and chains, if applicable.		
Inspect double drive chain for tension and adjust as required, if applicable.		
Inspect drive shafts (Should be in good condition, not twisted or bolt holes elongated).		
Inspect and grease mechanical brake spinner (Should swing freely but no side play).		
Inspect all bearings.		
<b>Visual Inspection of Safety and Limit Components</b>		
Check emergency cut out switch (Make sure it is active and not bypassed).		
Check upper and lower limit switch for wear and alignment (Inside electrical box).		
Adjust upper and lower limits if so desired by the store (Should not be lower than 6' to bottom of hook with a minimum of 2 wraps of strap left on the spool).		
Inspect upper and lower limit switch drive chain for tension and alignment.		
<b>Visual Inspection, General Operating Conditions</b>		
Ensure all electrical cords are in good condition.		
Bottom of pendant control at 52" (1.3m) from the floor. <b>Should not hang directly under product bar.</b>		
Check pendant control switches for proper operation and condition.		
Visually inspect all bicycle hooks. Check for straightness and cracking.		
Visually inspect general condition of all garment bars, ensuring end caps are in place.		
Bike hanger bars should not be separated at the clamps (12' joints, view through joiner gap).		
Ensure load straps are not twisted, frayed or folded. Please arrange to replace frayed straps.		
Ensure load straps on bottom bar are aligned with spools on top bar to prevent fold over.		
Adjust clamps if necessary.		

**Conclusion:** This unit has been inspected and serviced for safe operation and is operating as intended by the manufacturer.

Comments and Parts Used (If any): \_\_\_\_\_

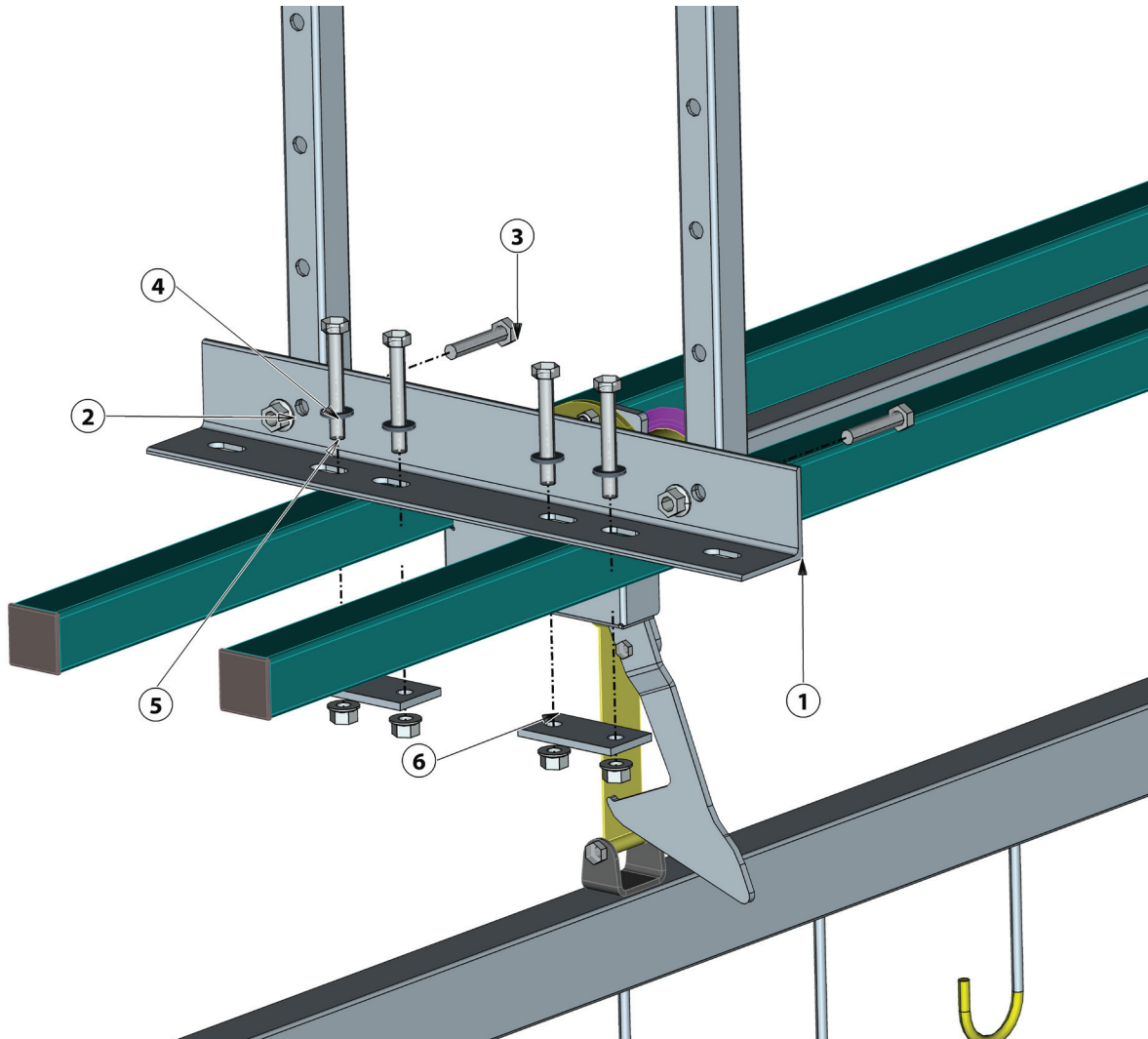
\_\_\_\_\_

\_\_\_\_\_

\_\_\_\_\_

# MACHINE COMPONENTS

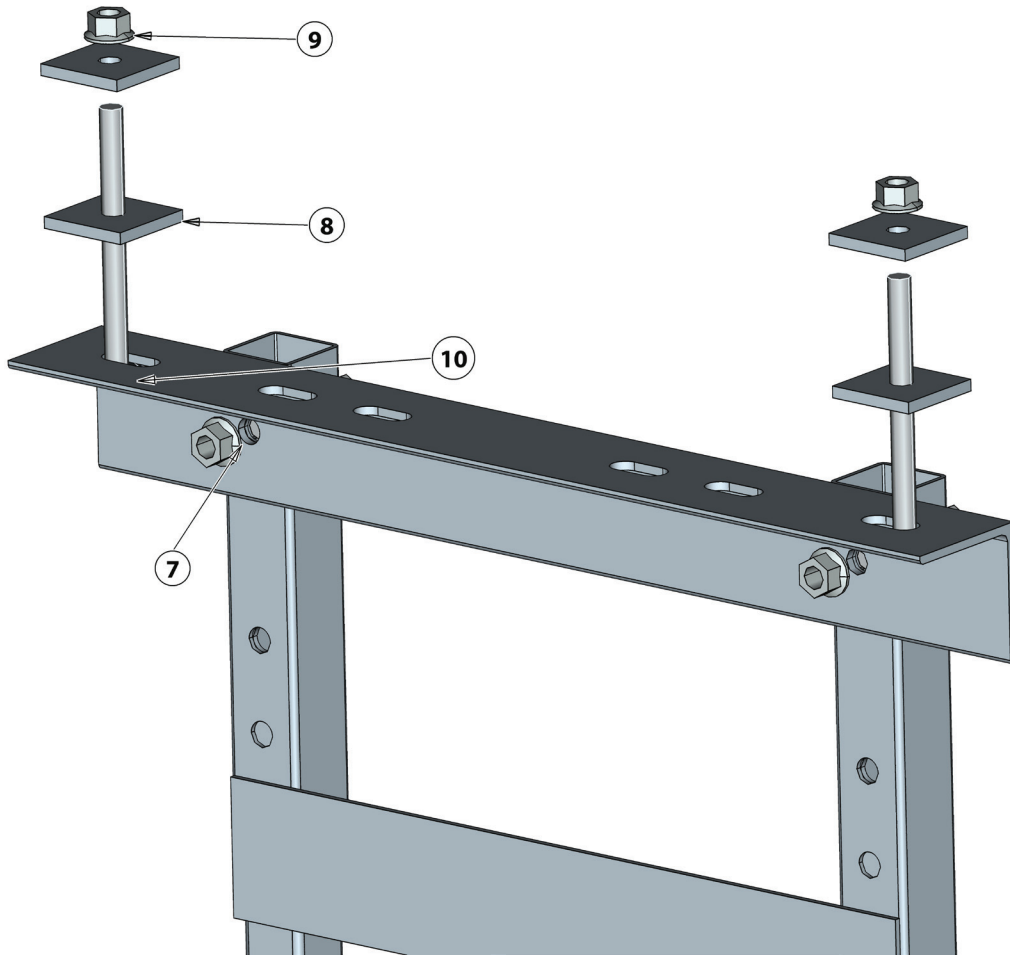
## Bottom Rafter Suspension Kit



Item #	Description	Part #
1	Rafter suspension top weld	5-43800
2	1/2 Flange nut gr5 unc	004-0017
3	1/2 X 2 1/2 hex bolt gr5 unc	001-0149
4	Washer sae 1/2 (17/32x1-1/16x1/16)	003-0016
5	1/2 X 3 1/2 hex bolt gr5 unc	001-0151
6	2"Tube clamp flat	5-4100

# MACHINE COMPONENTS

## Top Rafter Suspension Kit

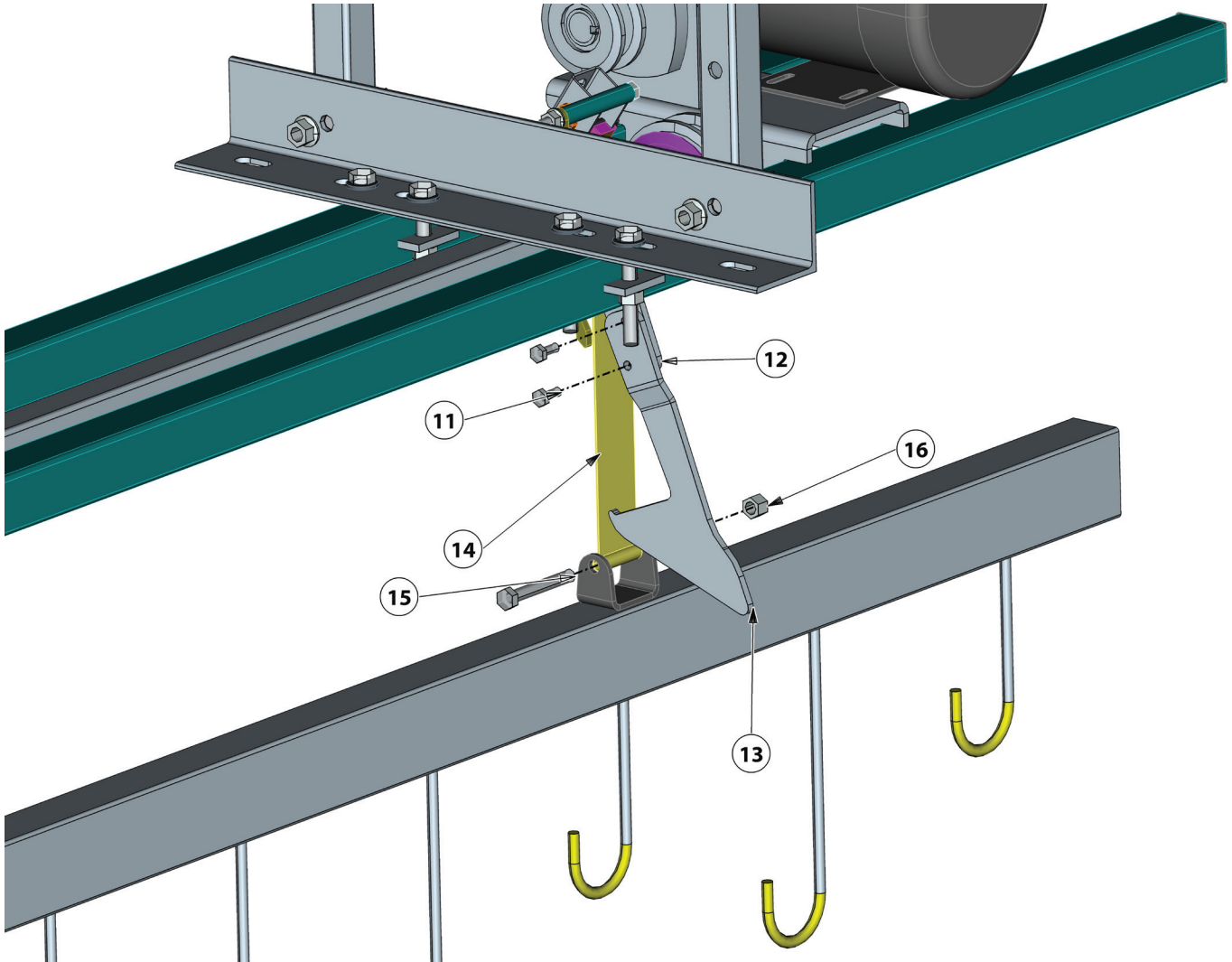


Item #	Description	Part #
7	1/2 Flange nut gr5 unc	004-0017
8	1/2 X 2" square washer	2-45153
9	1/2 Flange nut gr5 unc	004-0017
10	1/2 X 5 1/2 hex bolt gr5 unc	001-0155



# MACHINE COMPONENTS

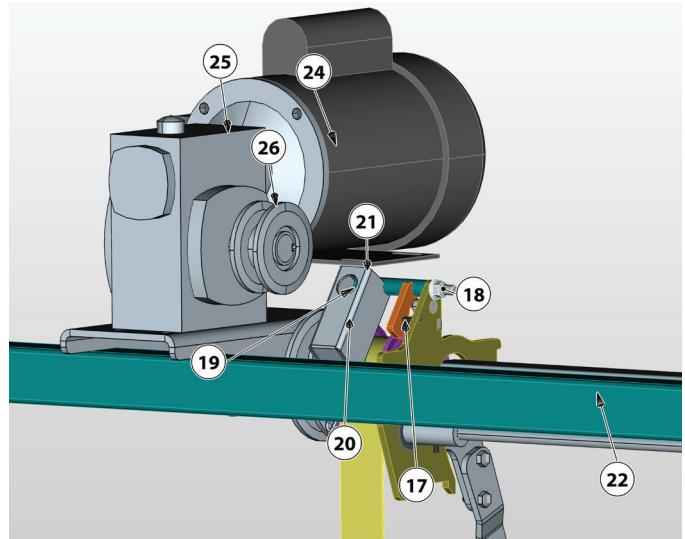
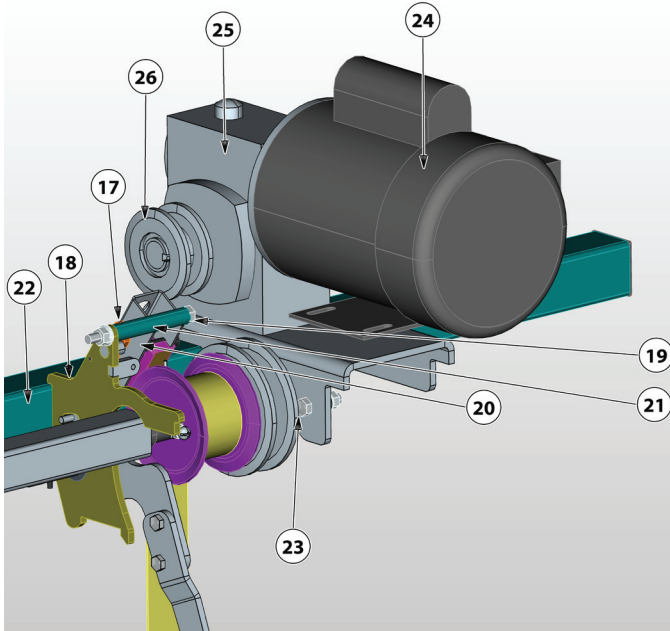
## Bikebar, Latch, Strap



Item #	Description	Part #
11	Bolt hex 5/16 x 3/4 gr5 unc	001-0099
12	Latch hook mount drive end	5-5264
13	Latching hook	5-6910
14	Nylon strap 2"x12' yellow	111-0018
	Nylon strap 2"x14' yellow	111-0019
	Nylon strap 2"x10' yellow	111-0020
15	7/16 X 4 hex bolt gr5 unc	001-0138
16	NUT 7/16 GR5 UNC (x2)	004-0024
	12Ft. Bike bar (short hook- long hook)	5-1685
	Bike hanger buckle clamp asmb (2 required for above)	5-1700
	Decal, oss 12ft lift 600 lbs eng/fr/sp7.5"X2.25	110-0204

# MACHINE COMPONENTS

## Drive System

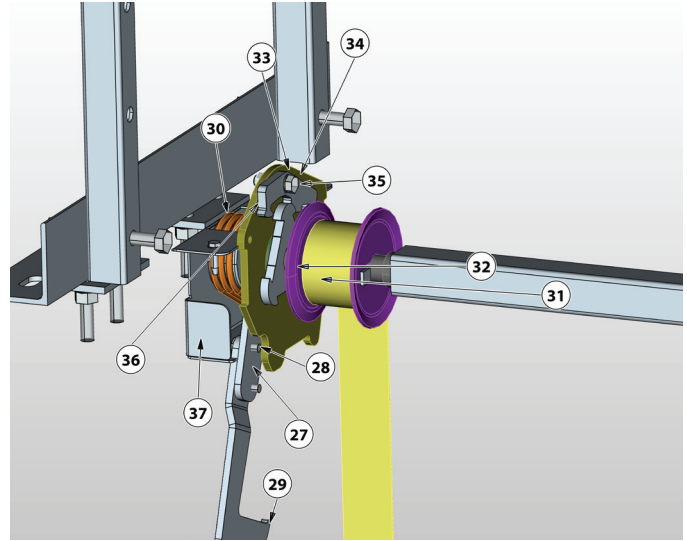
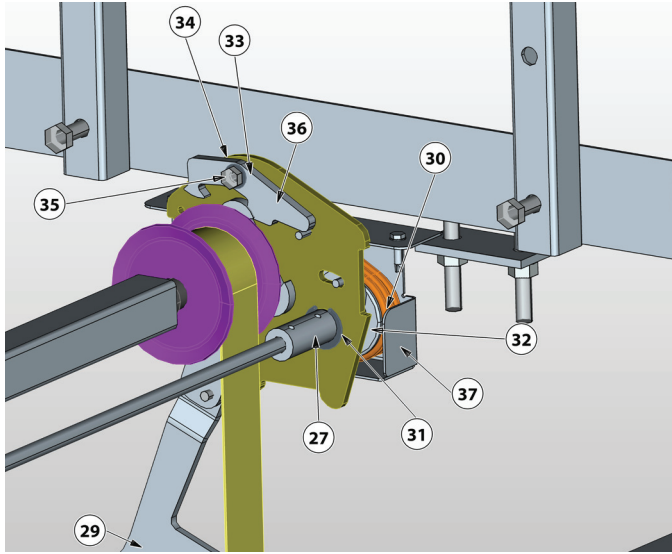


Item #	Description	Part #
17	Pin roll 3/16 x 3/4	113-0031
18	3/8 Flange nut gr5 unc	004-0015
19	3/8 X 4 1/2 hex bolt gr5 unc	001-0125
20	8 CL limit switch with skid rod	410-0219
21	Lower limit switch weld	5-5430
22	Drive shaft chain drive weld	5-5151
23	Double sprocket 40 x 28 tooth	5-50455
24	Motor 2HP, Brake Auto, 1PH, 60Hz, 208V, 56C	407-0020
	Motor 2HP Marathon	407-0035
	Motor 0.75HP, 1PH, 56 RND Motor	407-0026
25	Gearbox (chain drive #324-50:1 OSS)	107-0002
	Gearbox 0221-15827 size 321 R:100:1	107-0031
	Gearbox 60:1 (OSS chain drive)	107-0003
26	Double sprocket 40 w 19tooth	5-44387

**Please Note:** when replacing motors or gearboxes, get part label info, pictures and call Vidor service before ordering

# MACHINE COMPONENTS

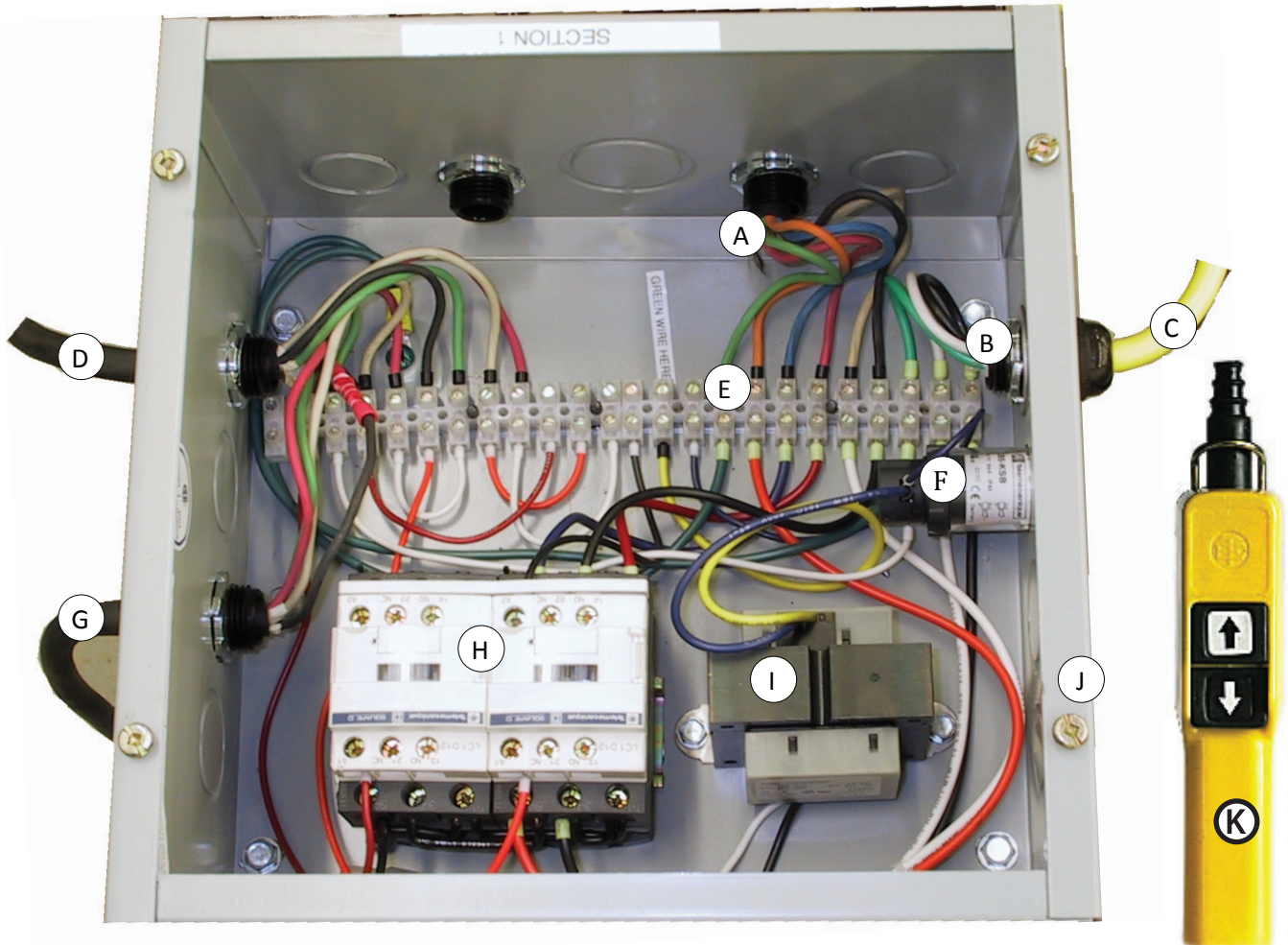
## Overspeed System



Item #	Description	Part #
27	Latch hook mount brake end weld	5-5242
28	Bolt hex 5/16 x 3/4 gr5 unc	001-0099
29	Latching hook	5-6910
30	1/4" Orange belt	112-0002
31	Ring snap ext 1" (cs100)	116-0026
32	Hook clutch wheel	5-5350
33	Bushing bronze 3/8x1/2x12	007-0007
34	Wshr flat spacer 3/8 x 3/4 x 1/32	003-0059
35	3/8 X 1 1/4 hex bolt gr5 unc	001-0115
36	Pendulum arm #8	5-3160
37	Clutch cover	5-5360

# MACHINE COMPONENTS

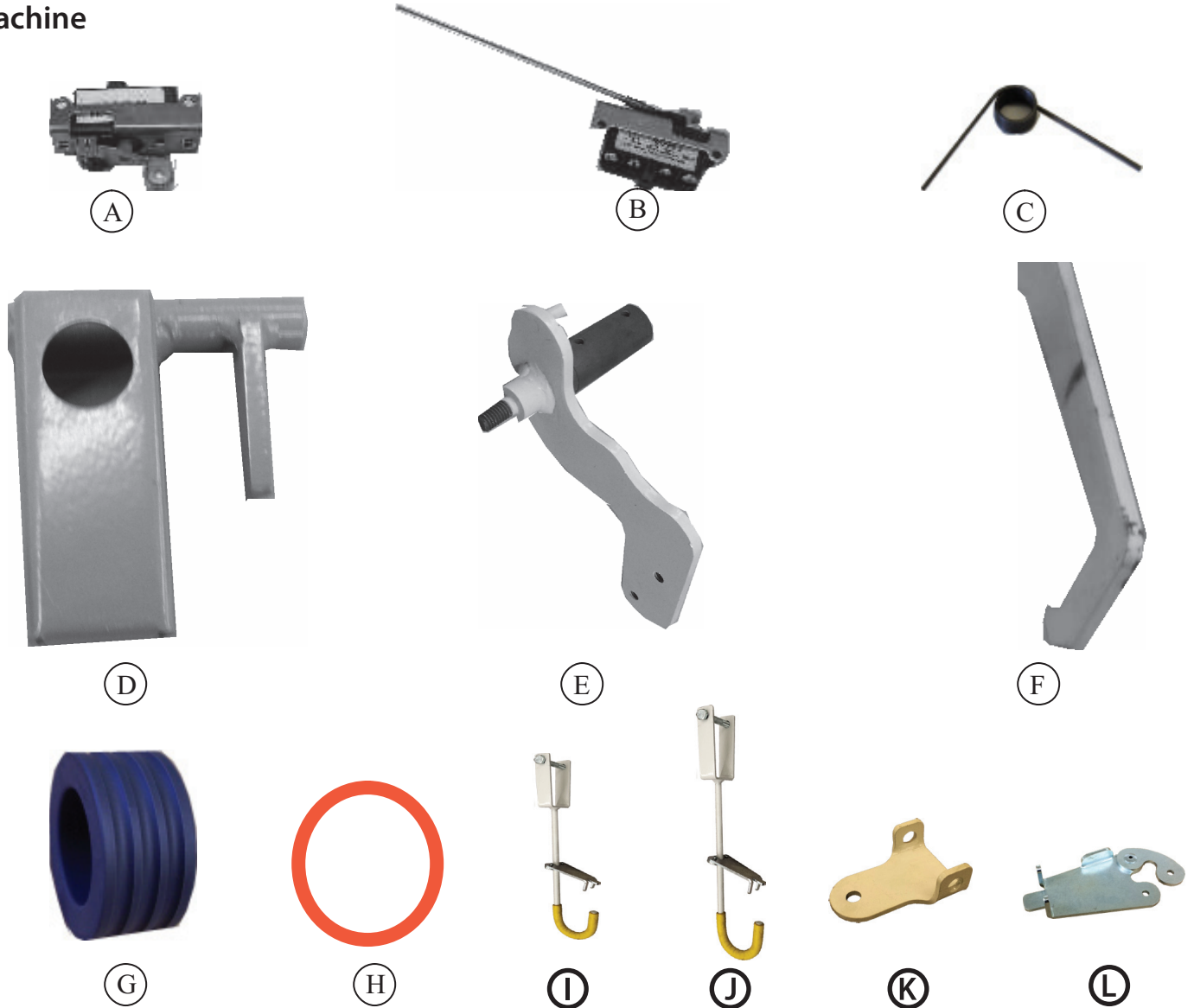
## Electrical



Item #	Description	Part #
A	Motor Cord 4C-16 (sold by the foot)	400-0052
B	Strain relief connector	401-0003
C	Large strain relief connector	401-0006
D	Power cord	400-0005
E	Terminal strip	401-0050
F	Buzzer	406-002
G	Cord	400-0005
H	Up/Down contactor double	409-0077
	Up/Down contactor single	409-0071
I	Transformer 120/24 volts	411-0001
J	Electrical box	404-0013
K	Pendant station with cord	410-0083
	Pendant station only	410-0010

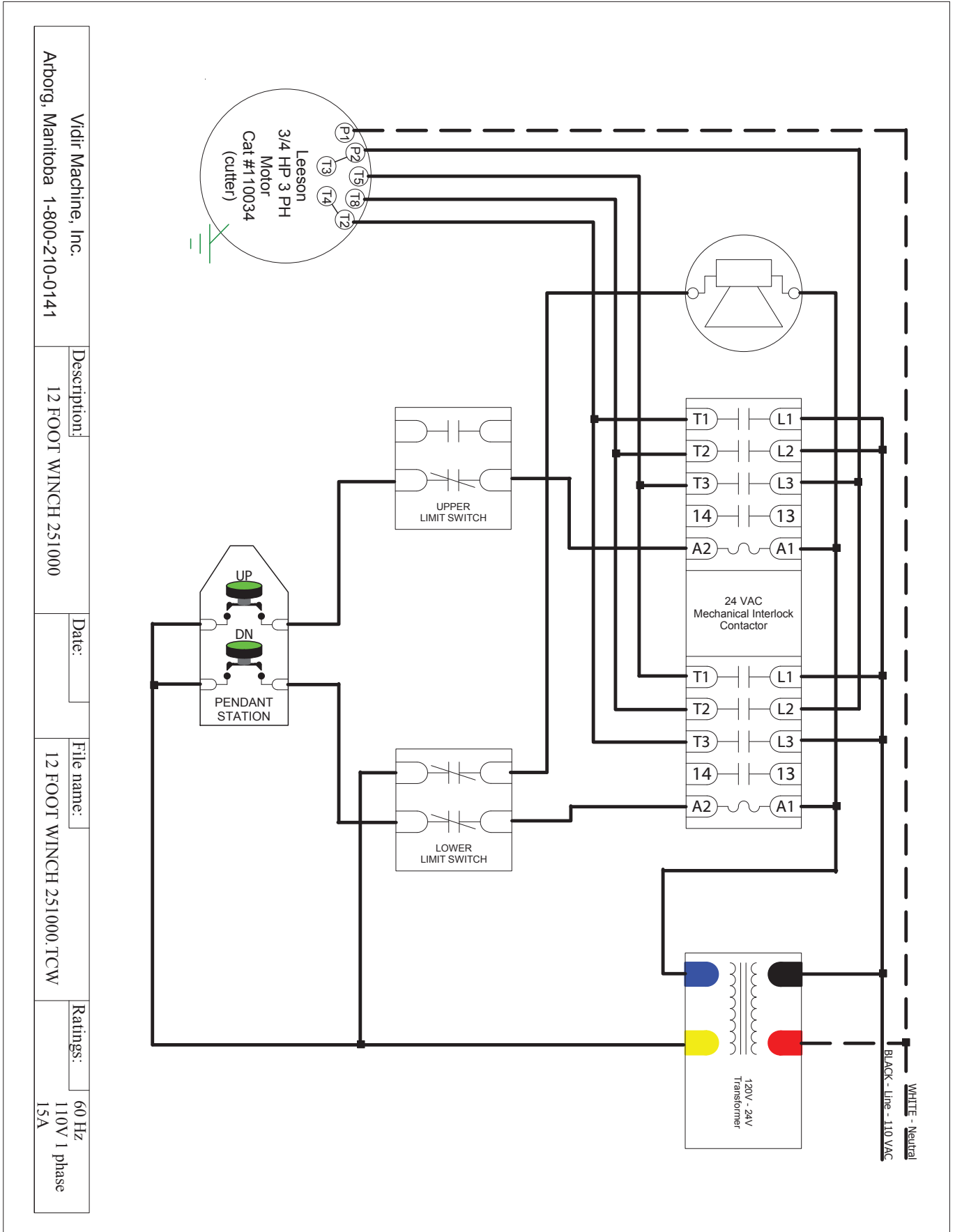
# MACHINE COMPONENTS

Machine

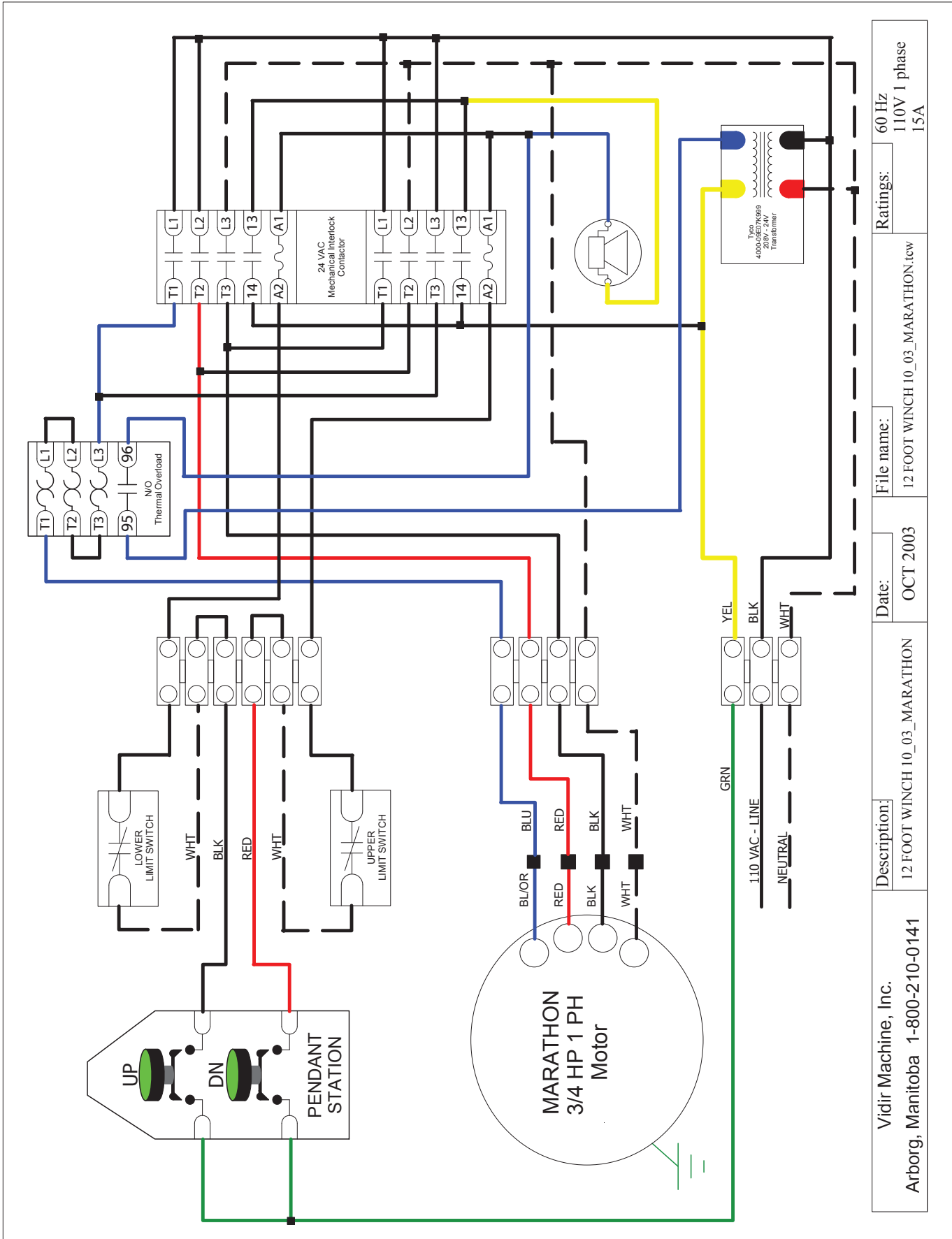


Item #	description	part #
A	12' U lwr limit swtch w/skid rod ab23 4c	410-0076
	12' Unit 8cl-limit swtch w/skid rod ab23	410-0219
B	Uppr limit swtch (12' unit) w/ whiskr 4c	410-0085
	Uppr limit swtch (12' unt) w/8c w/whiskr	410-0220
C	Lower limit switch spring	119-0077
D	Lower limit switch mounting arm	5-5420
E	Latch hook mount brake end	5-5242
	Latch hook mount drive end (not shown)	5-5264
F	Safety hook	5-6910
G	Hook release drive pulley (2)	5-5350
H	O-ring (3)	112-0002
I	OSS hook replace short asmb	5-56958
J	OSS hook replace long asmb	5-56957
K	Strap buckle	5-1870-P01
L	OSS bike retainer assembly	5-59881

# WIRING SCHEMATIC



# WIRING SCHEMATIC



Vidir Machine, Inc. Arborg, Manitoba 1-800-210-0141	Description: 12 FOOT WINCH 10_03_MARATHON	Date: OCT 2003	File name: 12 FOOT WINCH 10_03_MARATHON.tcw	Ratings: 60 Hz 110V 1 phase 15A
--	--	-------------------	--	--

# **WARRANTY & LIABILITY**

## **Vidir Machine Inc. Warranty Agreement and Limitation of Liability**

1. Vidir Machine Inc. ("Vidir") warrants solely that the equipment shall be free from any defect due to faulty workmanship or material deficiency at the time of delivery to the buyer thereof (the "Buyer") and for a period of one year therefrom.
2. All work except minor repairs or adjustments to the equipment furnished on an emergency basis, will be performed during regular working hours. If the Buyer requests that repair work be performed outside of regular working hours, it is the responsibility of the Buyer to pay the difference between regular and premium labour rates at the then standard hourly billing rate.
3. This warranty shall be voided by any modifications to the equipment or any use of the equipment for any purpose other than that for which it was specifically intended.
4. This warranty is the only warranty made by Vidir. The Buyer hereby expressly waives any obligations or liability, including liability for loss or damages due directly or indirectly, any obligations including, without limitation, loss of use, revenue, or profit, shipping and handling, and injury to person or property.
5. It is the responsibility of Buyer to know, understand and comply with the work and safety laws and regulations in effect and governing Buyer's use of the equipment. To the extent governing law requires inspections, records keeping and/or after-purchase modifications to the equipment, it is the responsibility of the Buyer to arrange for and comply with such requirements and any associated costs are the sole responsibility of the Buyer. Vidir assumes no responsibility or liability for Buyer's performance under or compliance with such laws and regulations.
6. If the equipment is found by the Buyer to be defective, the Buyer must notify Vidir within a period of 30 days of discovery of the defect.
7. The Buyer is expected to provide access to all equipment covered by this warranty. Vidir shall not be responsible for any expense incurred in removing, replacing, or refinishing any part of the building structure necessary for the performance of Vidir's obligations under this warranty.
8. In the event that any alterations, additions, adjustments or repairs are made by others without Vidir's prior written consent, Vidir may, at its option, immediately terminate this warranty by providing written notice to the Buyer.
9. In the event Vidir is required to make emergency calls, repairs and/or replacements under this warranty occasioned by the Buyer or any user's negligence, improper operation or misuse of the equipment or by fire, explosion, flooding, the elements, strikes, labour troubles, vandalism, riots or civil commotion, or by any cause beyond Vidir's control. The Buyer shall reimburse Vidir for such emergency calls, repairs and/or replacements in accordance with the then current rates for such services.
10. Vidir's liability for injury to persons or property shall, in any event, be limited to that caused directly by its negligence. Vidir shall not be liable, however, on any account, for any damage or loss to the Buyer or its dealers, representatives, affiliates or agents resulting from business interruption, inconvenience, loss of profits, or special or, indirect or consequential damage. Vidir shall not be deemed to guarantee or warrant the continuing operation or operating efficiency of the equipment covered, nor shall Vidir be liable for any breakdowns thereof or for any damage to any other property of the Buyer not covered by this warranty but resulting from any breakdowns in or operating mishaps of the equipment covered.
11. Should any payment due by the Buyer become thirty days or more delinquent, Vidir may terminate this warranty by written notice, and all moneys owed Vidir shall be immediately payable on demand.
12. This warranty is not transferable or assignable by the Buyer.
13. Vidir reserves the right to determine, in its sole and absolute discretion the best means and methods to be employed for any corrective or repair work deemed necessary by Vidir pursuant to this warranty.