



RACK & ROLL R1-R4 SERVICE EDITION





RACK & ROLL R1-R4 SERVICE EDITION

Table of contents

Introduction	1
Operating instructions	2
Trouble shooting	3-5
Cutter cable parts	6
Roller chain routing diagram	7
Roller drive parts.....	8
Electrical parts.....	9
Pinch roller servicing instructions.....	10
Electrical wiring diagrams	11-12
Preventative maintenance check list	13
Limitation of liability	14

Introduction

The Model R4 Rack N Roll is a single cradle 220-volt, single-phase carpet and vinyl cutting and measuring device.

This machine comes in two models:

R For 12-foot goods

RXL For 15-foot goods

The 15-foot machine is identified with a “L” or “XL” in the serial number. Both types of machines have identical components with the exception of the length foot cable and cutter cable.

The machine is equipped with two electric motors: one motor drives the rollers and the other drives the cutter.

The machine is equipped with a security keypad to prevent unauthorized operation. The factory security code is 4 3 2 1 #. The security code could be changed upon request, however the code must always end with #. The machine can be set to remain on after an operation from 2 to 98 seconds. The keypad is set to respond to the foot cable toggle and the inch button toggle. Each time one of these is toggled, the green light will fluctuate off and on – this is the same as entering the code in the keypad.

OPERATING INSTRUCTIONS

To measure and cut a particular piece of carpet or vinyl:

1. Line up the particular piece of carpet or vinyl so that the leading edge of the carpet or vinyl is about 2' higher than the lower back roller on the carpet cutter.
2. Once in place, remove Velcro straps from carpet or vinyl.
3. Raise the table and drop the leading edge of the carpet or vinyl onto the table.
4. Lower the roll of material so that the leading edge of the material will be drawn into the pinch rollers.
5. Run the rollers and bring the leading edge up to the cutting bar. Ensure that both ends are even.
6. Check to ensure that the carpet is laying on the machine with the back side down.
7. Lower the counter hold down wheel, reset the counter to "0". Move around to the front of the machine and step on the foot cable. Advance the carpet or vinyl out by 2 or 3 feet. From the roll by hand.
8. Run the machine until the desired length is displayed on the counter and remove your foot from the foot cable.
9. Return to the control panel. Make sure the counter is displaying the exact length of cut before making the cut. If not the correct amount, move the material through the machine as needed using the inch wheel.
10. Turn the roller selector switch to OFF.
11. To start the cutting process, place one hand on the spring-loaded cutter switch. Place your other hand on the inch button. **SAFETY CAUTION:** this is a two- step process for safety reasons and the inch button must be pressed in addition to the directional switch on the carpet cutter. If not depressed, the blade holder will not go back and forth.
12. Return the cutter to the operator end and park it under the cover.
13. Turn the roller selector switch to the forward position. Move to the side of the machine and insert the stretch wrap under the between the last 2 layers carpet.
14. Step on the foot cable to engage the rollers and move the stretch wrapper along the roll as it wraps.

TROUBLE SHOOTING

1. MACHINE WILL NOT STAY ON TRACK

- a. If the machine jumps the track, make sure there is no garbage or any debris on the floor. If the machine is pushed too rapidly, it will jump the track, even if the floor is clean and the track is straight.
- b. After having considered the above points, if the machine still jumps the track, the wheels may be out of alignment. To adjust the wheels, loosen the 4 bolts caster wheel mounting bolts. Do this to both of the grooved caster wheels. Push the machine up and down the track a few times and then re-tighten the bolts. If this does not solve the problem, then loosen the 4 mounting bolts on each of the non-grooved caster wheels and follow the same procedure. [a little toe helps to keep the machine on track]
- c. If this still doesn't solve the problem then run a string across the outer edges of the wheels to ensure they are in line with each other.

2. UNIT IS NOT MEASURING CORRECTLY.

- a. Look over the mechanical aspects of the counter. Check the knurled measuring wheel and verify that it is not worn down. Next check if the measuring wheel is securely fastened to the counter shaft and that the countershaft is securely fastened to the counter.
- b. Check the counter to verify that there are not any broken pieces on it and that the housing is in good shape and the spring-loaded reset is in position.
- c. The quickest way to check the counter calibration, is to perform the "tape measure test". Run a tape measure through the counter just like a piece of carpet. Begin the test by placing the tape measure under the counter hold down weight. Then pull it until the hook of the tape measure is at the cutting bar. Reset the counter to zero. Pull the tape measure through until the 10' mark stops at the cutting bar. It should be accurate to within 1/2" on 10'. Try this until you get the same reading 3 times. If the counter fails this test call the help line. 1-866-821-2647
- d. If the counter is accurate as per "tape measure test" check the following.
 - a. Back side of carpet must be down (plush side up)
 - b. Watch that the carpet doesn't walk end ways on the machine while it is being rolled through.
 - c. Make sure that the carpet doesn't lift off the counting wheel as it feeds.
 - d. Turf due to the fact that it is so stretchy will not measure accurately.
 - e. Foam or rubber back carpet will not be accurate because it is so soft.

3. **NO POWER TO THE MACHINE. (no red light on the keypad)**

- a. Check to see if the red light on the keypad is on, indicating power.
- b. Check to make sure the yellow and red switch is turned on.
- c. Locate the breaker panel in the building, find the designated breaker and turn it off and then back on.
- d. Check voltage (220 volts) at the shut off switch on the machine.
- e. If voltage is not present then check the yellow festoon cord for cuts or breaks.
- f. If there is power at the shut off switch check for voltage at the keypad. Depending on the model of machine, you should have either 12 or 24 volts between terminals #6 and #7. If voltage is present and the red light is not lit the keypad is defective and needs to be replaced.
- g. If there is no power, check the transformer output should either 12 or 24 volts.
- h. Check the voltage on transformer primary hook up it should be 220 volts.

4. **POWER TO THE MACHINE BUT THE MACHINE WILL NOT RUN (red light on)**

- a. Check if the green and/or yellow light comes on after the code is entered. If not, try a few different codes. Listen for a click in the electrical box after you enter the code.
- b. If the yellow light comes on but there is no click in the electrical box then try to bypass the key pad by moving the wire from 11 → 12. Now the machine should run without entering the code.
- c. If the key pad fails to respond to the code then try ****4321**** or ****1234**** to access the programming menu. (green light will begin to flash) 101# (fast green) 4321# (steady then fast green) 4321# (steady > slow flashing green) 33# (steady > slow flashing green) 298# (steady > slow flashing green) # red light.
- d. If the yellow light comes on and you hear a click in the electrical box after the code is entered, check the following:
 - i.) The roller switch is turned on and the foot cable and inch button are operating properly. You should hear a click in the electrical box when you press the "inch" button or step on the foot cable. If you do not hear a click, open the electrical box and check for any loose wiring connections.
 - ii.) If you hear a clicking sound, check the reset button on the motors. The reset button is located on a rectangular box mounted to the side of the motor. Reset it by pressing it **firmly**. You will hear a clicking

- sound when the reset button resets. The above procedures are the same for both the cutter motor and the roller motor.
- iii.) Check if the cutter motor runs if not check the above.

5. CUTTER IS NOT CUTTING (motor runs)

Assuming that you have checked Step #4 and the cutter motor is running. If the motor is running and the cutter gets stuck in the cutting process, check the following 2 items:

- a. First replace the blades. (or flip them to sharp edge)
- b. Next check the cutter cable tension. The cutter cable must be very tight. To tighten the cutter cable, loosen the jam nut on the cutter cable tensioning bolt and rotate the cutter tightening bolt clockwise about 2 revolutions or until cable is very tight. The cable should not sag.
- c. If the cutter still will not cut, check the belt tension on the motor. If the belt is loose, tighten it by loosening the 4 motor mounting nuts and sliding the motor down and then tighten the 4 motor mounting nuts
- d. If all this fails replace the cutter cable and cutter cable drive pulley.
- e. Check all set screws and keys on all the drive pulleys.

6. FOOT CABLE NOT ACTIVATING THE MACHINE

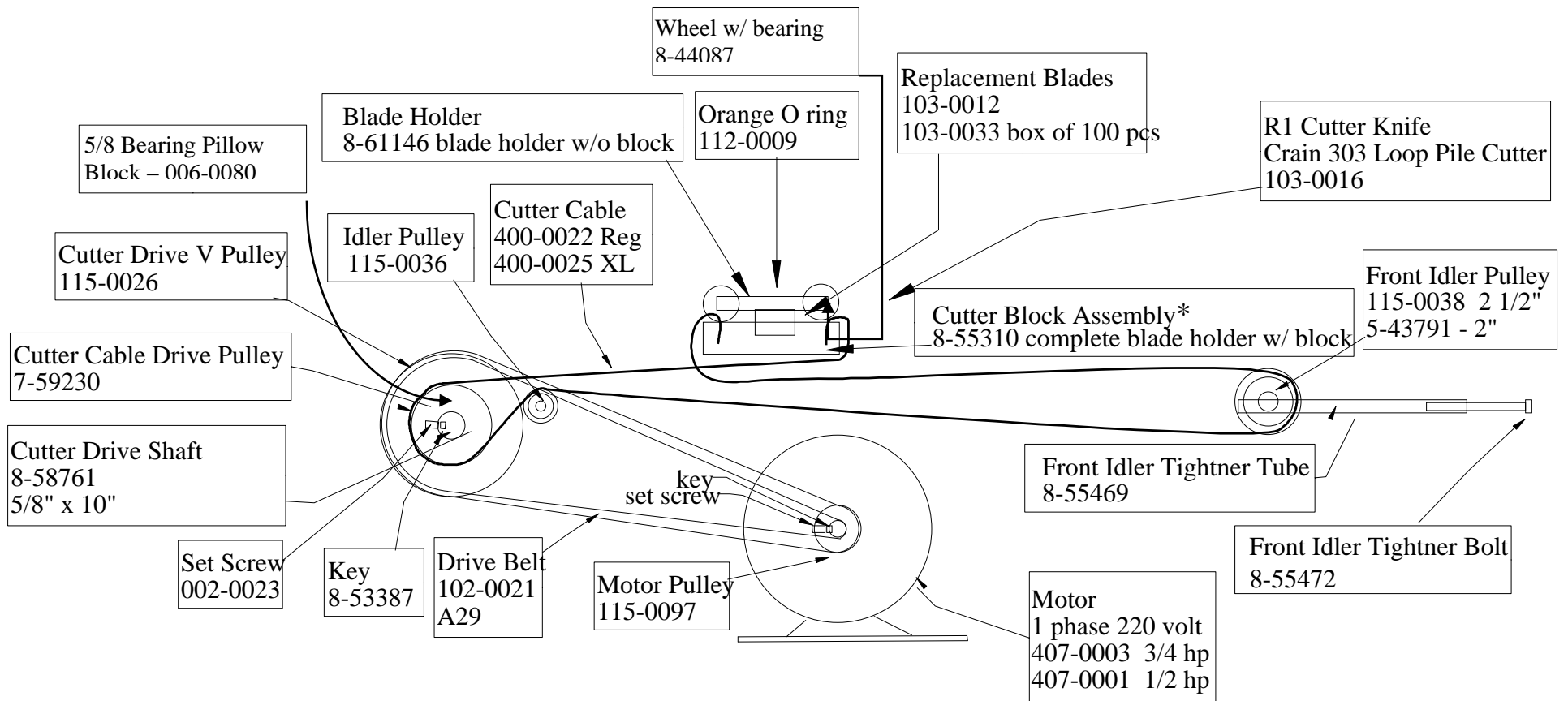
V

- a. Check the cable tension. When you step on the cable you should hear a click just before the cable hits the floor.
- b. If not, then tighten cable by adjusting the eyebolt at the far end of the machine.
- c. When you remove your foot from the foot cable you should hear a click just as you let go.
- d. Ensure the roller switch is turned on.

7. MATERIAL WILL NOT FEED THROUGH THE MACHINE

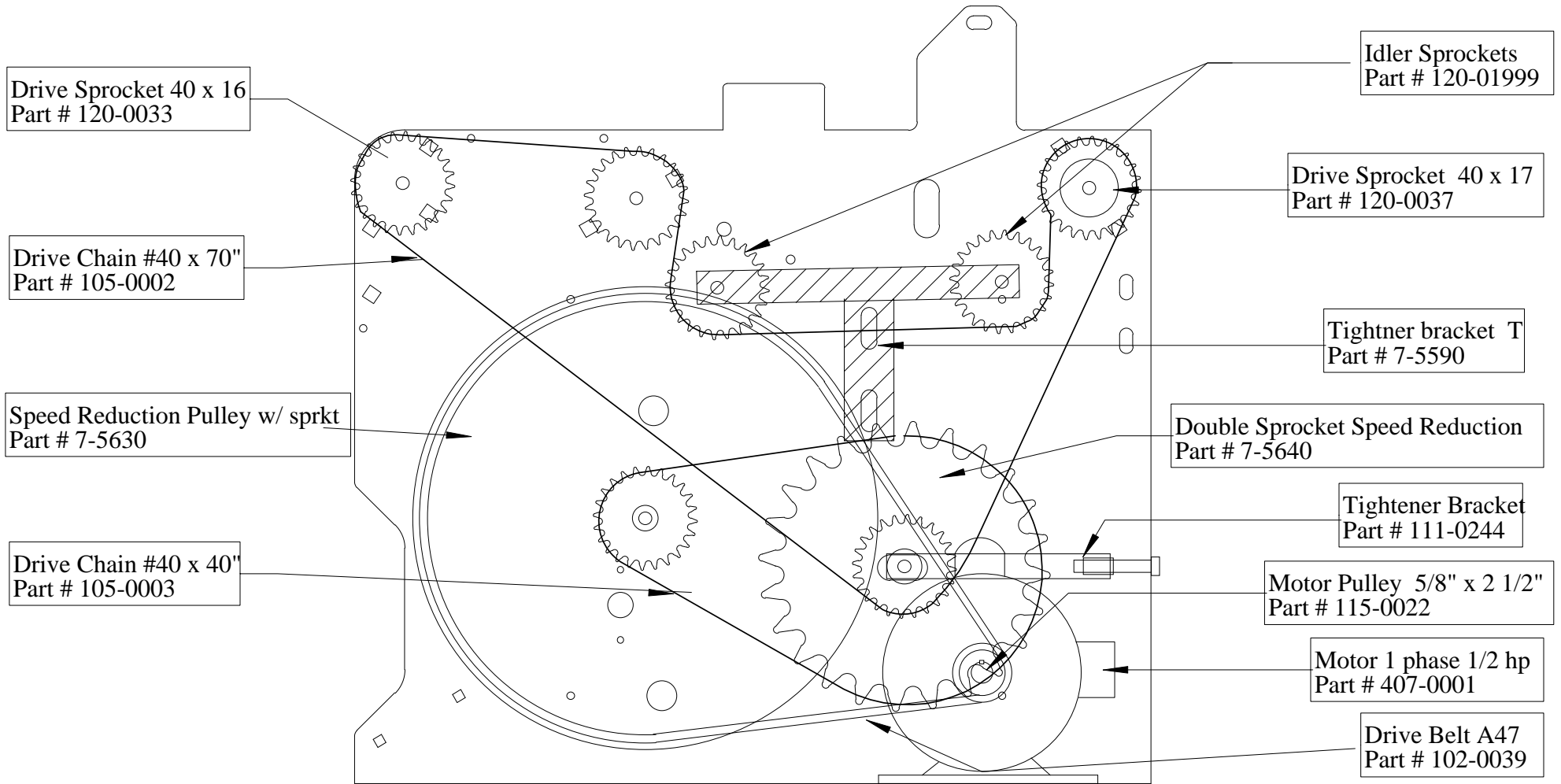
- a. Make sure the pinch roller drops down fully onto the drive roller.
- b. Check the gripper tape on the drive roller for excessive wear.
- c. Check that the top of the carpet roll is not higher than the drive roller.
- d. Replace worn out gripper tape and add extra gripper tape if needed
- e. Ensure that center roller support is installed on the XL machines

R4 CABLE CUTTER PARTS



*Cutter block only – Part # 8-44283

ROLLER DRIVE CHAIN ROUTING DIAGRAM



ROLLER DRIVE COMPONENTS

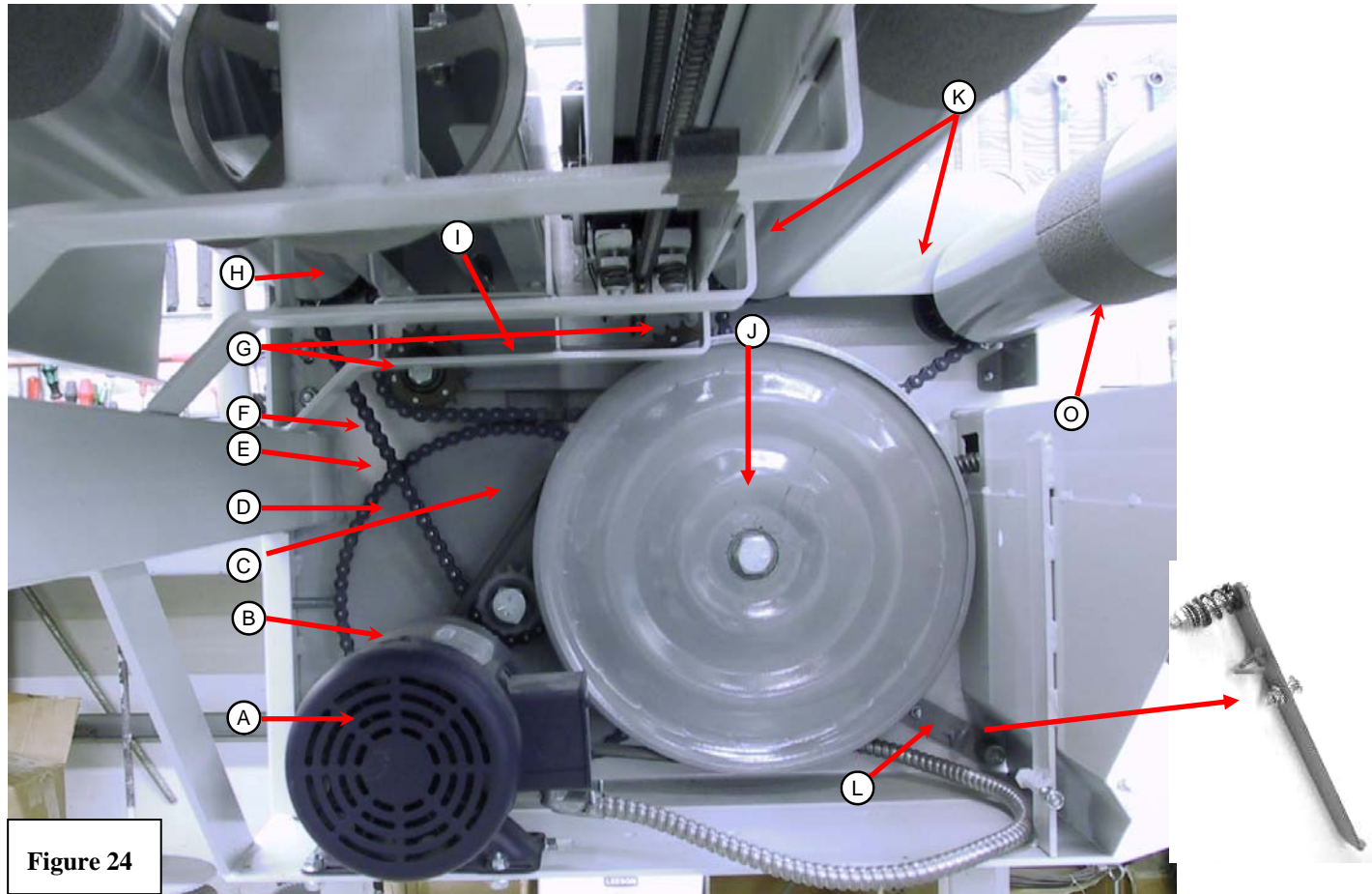
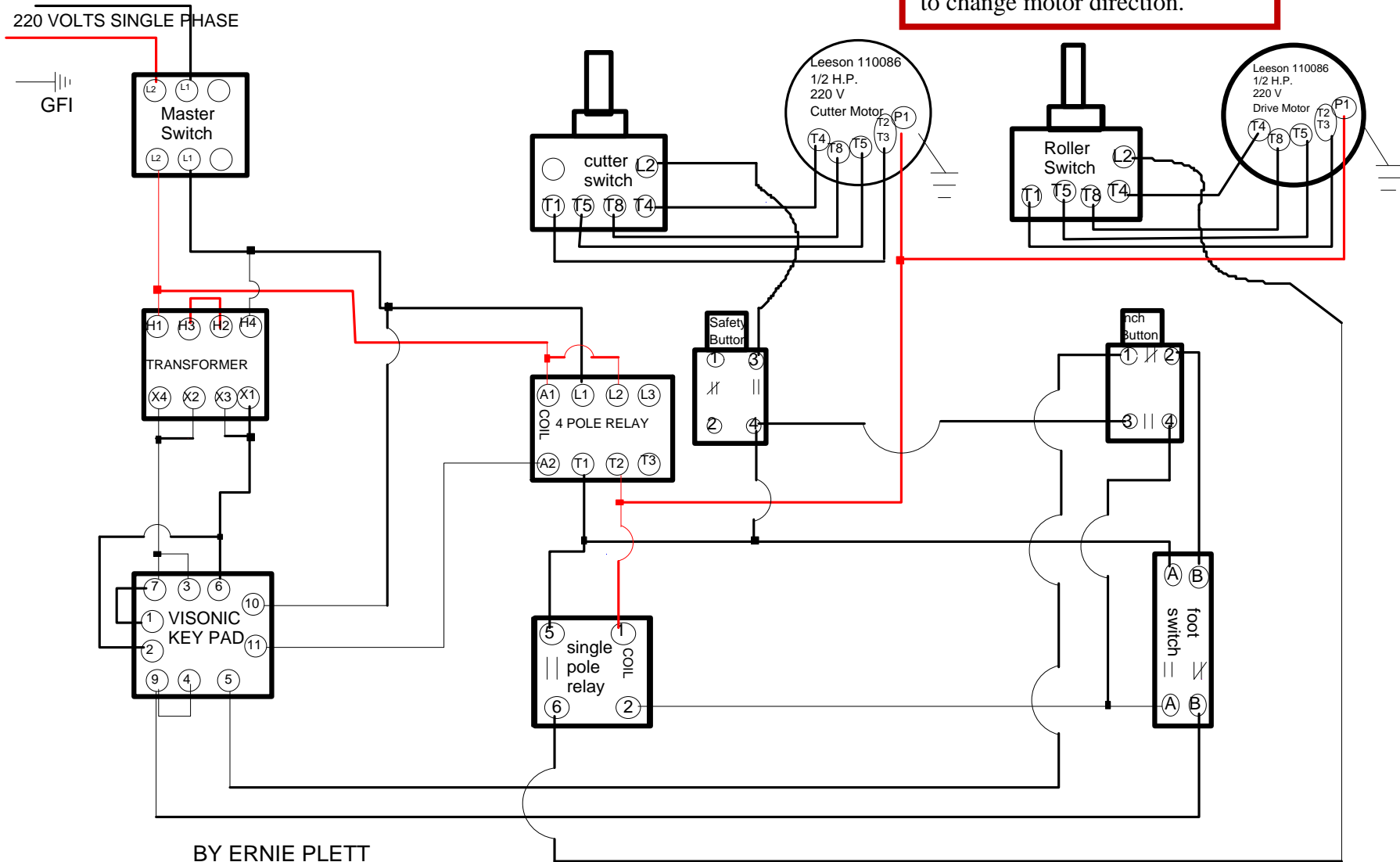


Figure 24

Description	Part number
A. 1/2 HP Motor 1 phase 110/230v	407-0001
B. Motor pulley 5/8" x 2 1/2"	115-0022
C. V belt A -47	102-0039
D. DbL. Speed reduction sprocket...	120-0139
E. Speed reduction chain 40"	105-0003
F. Roller drive chain 70"	105-0002
G. Drive chain idlers (2)	120-0199
H. Right side drive roller sprocket 40X17.....	120-0037
I. T chain tightener idler mount.....	120-0140
J. Speed reduction pulley and sprocket	115-0077
K. Left side drive roller sprockets (2) 40 X16	120-0033
L. Foot switch lever	111-0107
M. Foot cable Req. 15' 4"	400-0023
Bumper 2PC Asm (12 ft) not shown.....7-75402	

**RACK/ROLL WITH CABLE CUTTER
WIRING DIAGRAM 1996 220 VOLT CONTROL**

REVERSE blue & yellow wires
to change motor direction.

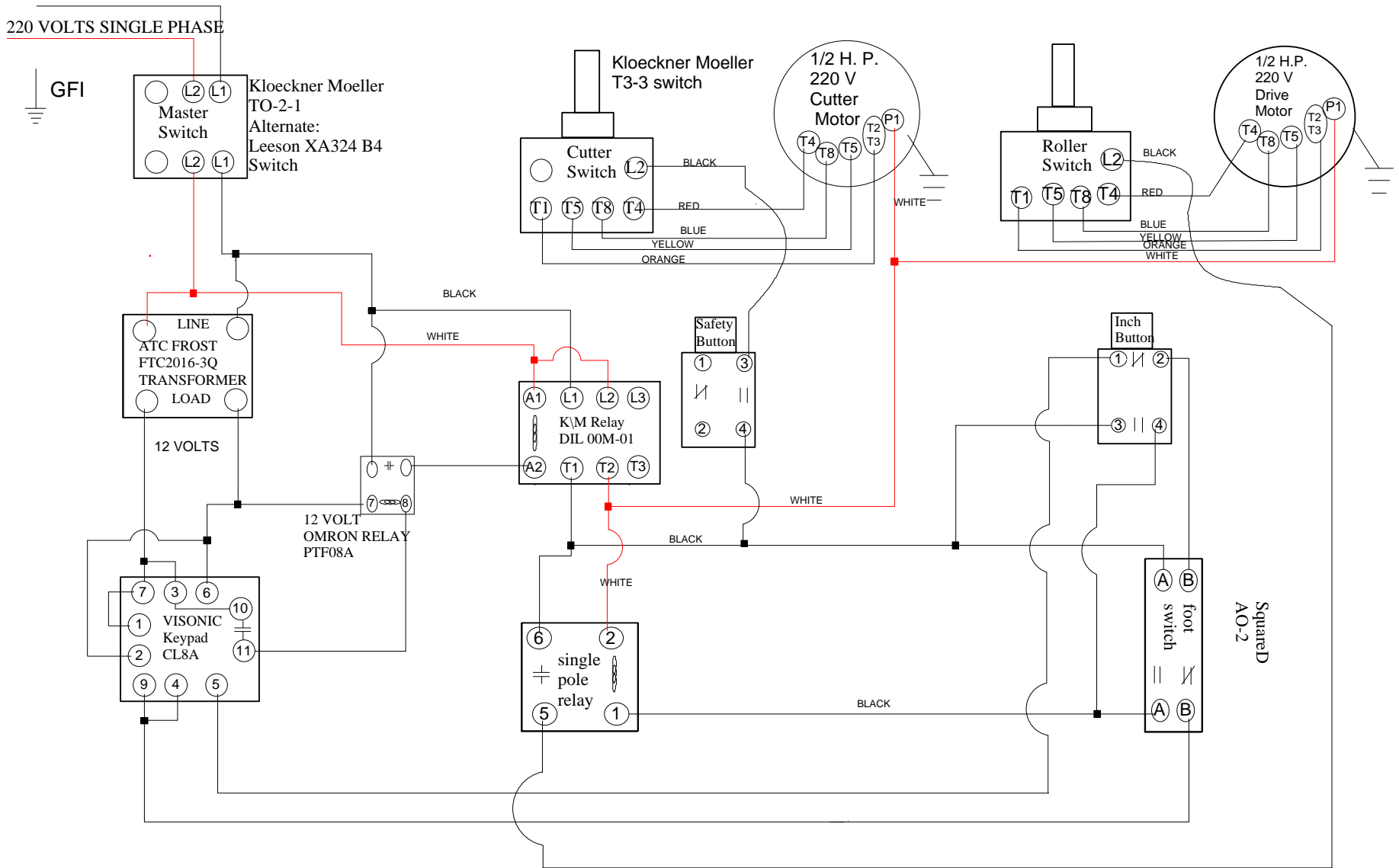


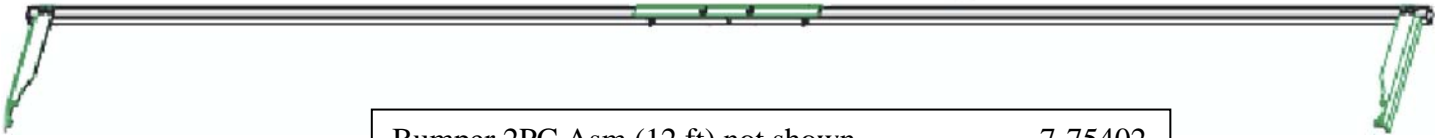
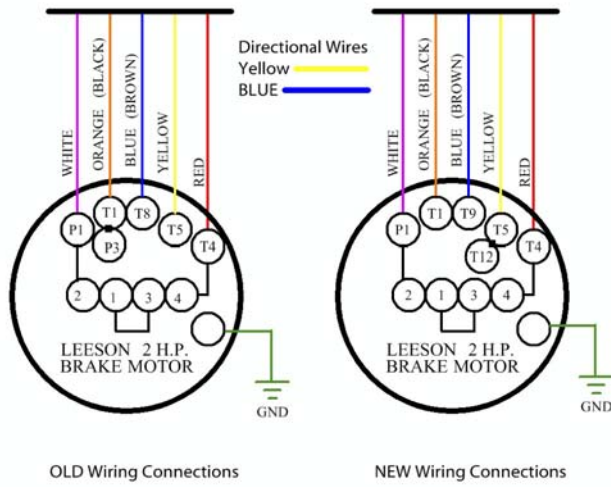
BY ERNIE PLETT
VIDIR MACHINE

RACKIROLL WITH CABLE CUTTER 12 VOLT
WIRING DIAGRAM MARCH 1997

**REVERSE blue & yellow wires
to change motor direction.**

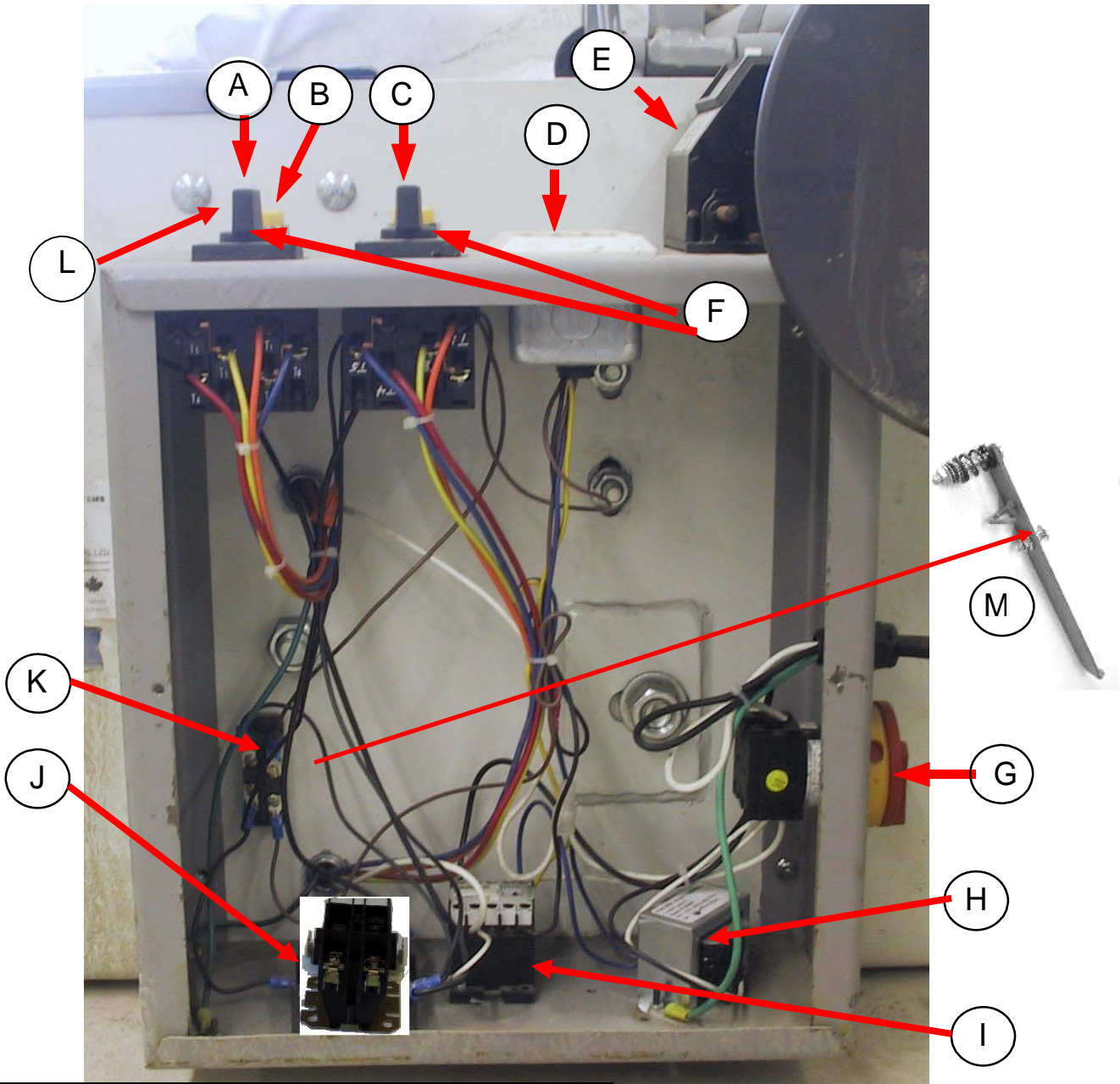
**BY ERNIE PLETT
VIDIR MACHINE**





Bumper 2PC Asm (12 ft) not shown.....7-75402

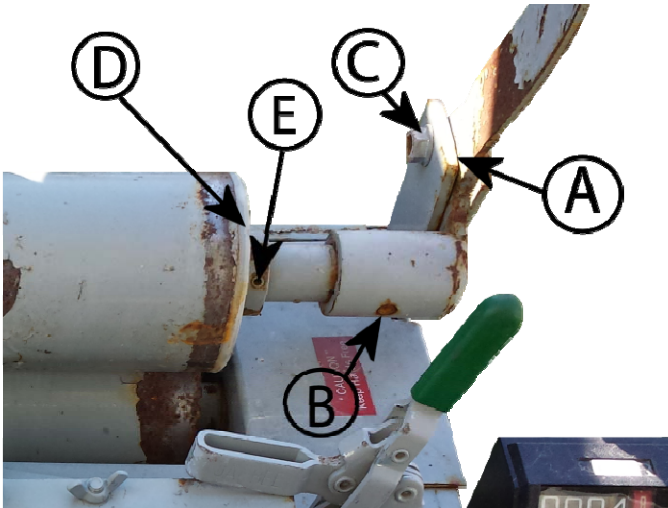
R&R ELECTRICAL PARTS



Description	Part number
A. Cutter F/R Switch	410-0032
B. Cutter Safety Inch Button	410-0069
C. Roller F/W Switch	410-002
D. CL8 Visonic key pad	410-0024
E. Counter (large digit) 2:3 ratio – 6` wheel	402-0002
Counter (large digit) 1:1 ratio – 4` wheel	402-0054
F. Replacement Switch Stem	410-0052
G. Main Power Shut Off Switch	410-0044
Power shut off knob	410-0068
H. Transformer 240 V—24V	411-0002
I. F/R Contactor (220 volt coil)	409-0013
J. Single Pole Relay	409-0011
K. Foot Switch	410-0039
L. K&M Knob	410-0026

M. RnR Foot switch lever.....7-6060	
Spring for above	119-0013

R1 to R4 Pinch Roller Preventative Maintenance



Servicing the Pinch Roller

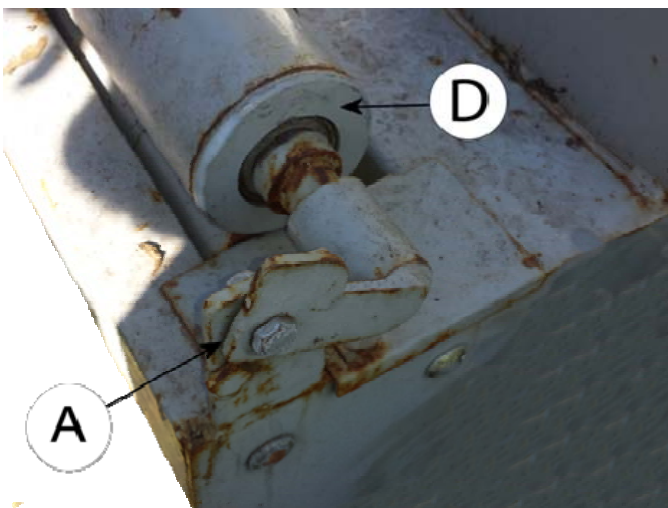
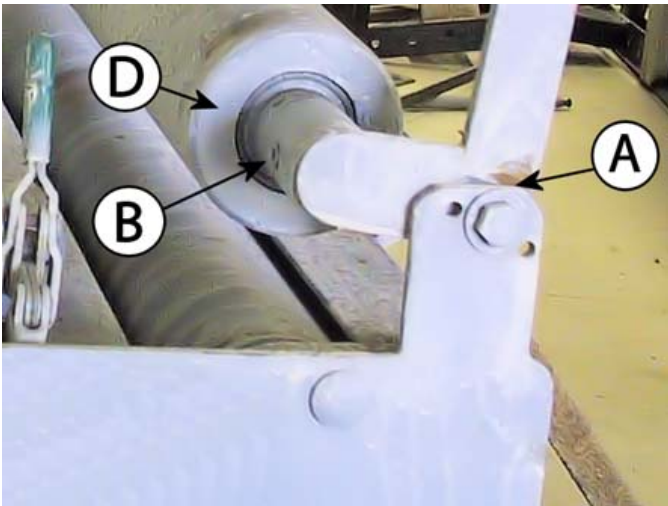
Grease Pivot Points indicated with an A

Check Set Screws for Tightness (E)

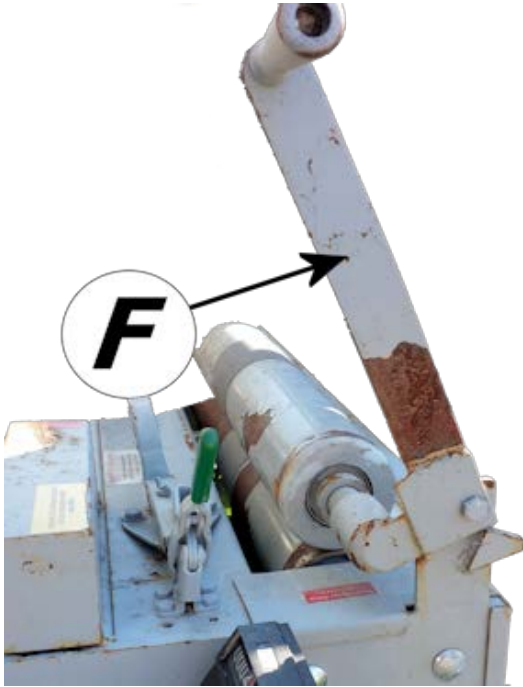
Ensure Roll Pin is Secure and not protruding (B).

Inspect and ensure the lock nut is at the correct tension (C).

Inspect and ensure plastic end cap is secure (D).



R1 to R4 Pinch Roller Handle and Hinge



Part	Description	Item No.
F	R1 - Pinch Roller Handle 90 deg R4 - Pinch Roller Handle 45 deg	7-53114 7-70889
G	Pinch Roller Rear Hinge	7-53109

PREVENTATIVE MAINTENANCE CHECK LIST

Company:			Date	/	/	
Store No:		City:	State:			
Model No:		Serial No:		PM	X	
Time In:		Time Out:		Service Co:		
Service Tech:				Store manager		

The inspection of the pinch roller latch and the overall condition of these components is critical to the **safe** operation of this unit. Please ensure equipment safety and integrity during the PM and inspection process. By initialing the inspections **by line** indicated below confirms these areas have been thoroughly inspected to insure no defects are found. Damaged items must be addressed or replaced.

<input checked="" type="checkbox"/> Indicates item is inspected and in good condition	<input type="checkbox"/> X Indicates Item was Greased / Aligned / Tightened	Initials	<input checked="" type="checkbox"/>	
1	Run cutter from end to end listen for any strange sounds			
2	Changed cutter blades if necessary (chipped or dull)			
3	Cleaned debris from blade holder as needed for easy blade change			
4	Checked cutter cable tension [must be taunt]			
5	Checked cutter cable for wear and fraying			
6	Checked cutter block and blade holder for wear.			
7	Checked condition and tension of the cutter drive belt.			
8	Checked condition and tension of the roller drive belt			
9	Ensure that bearing locking collars are tight.			
10	Checked tension on roller drive chain.			
11	Checked pinch roller latch and pivot points for proper operation (see bulletin in manual)			
12	Checked key-pad for proper operation			
13	Checked counter calibration (with tape measure)			
14	Checked counter wheel for free rotation			
15	Checked counter hold-down weight for free rotation and free movement			
16	Foot cable operates properly			
17	Inspected caster wheels for wear, and alignment			
18	Greased caster wheels and removed fibers			
19	Check OHP, festoon cord for wear, clearance and proper travel			
20	Ensure 3 rd roller brackets are tight and locking collars on bearings are tight.(app on units equipped)			

Parts tec should have on hand for each store that a PM is being done. Estimated time to complete PM per machine is 1 hour.

Qty	Description	Part #	Qty	Description	Part #	Qty	Description	Part #
24	Grip tape	117-0005	4	blade	103-0012			
1	Switch knob	410-0026						
1	Switch stem	410-0052						

Comments:

Warranty & Limitation of Liability

Vidir Machine Inc. ("Vidir") warrants solely that the equipment shall be free from any defect due to faulty workmanship or material deficiency at the time of delivery to the buyer thereof (the "Buyer") and for a period of one year therefrom.

All work except minor repairs or adjustments to the equipment furnished on an emergency basis, will be performed during regular working hours. If the Buyer requests that repair work be performed outside of regular working hours, it is the responsibility of the Buyer to pay the difference between regular and premium labour rates at the then standard hourly billing rate.

This warranty shall be voided by any modifications to the equipment or any use of the equipment for any purpose other than that for which it was specifically intended.

This warranty is the only warranty made by Vidir. The Buyer hereby expressly waives any obligations or liability, including liability for loss or damages due directly or indirectly, any obligations including, without limitation, loss of use, revenue, or profit, shipping and handling, and injury to person or property.

It is the responsibility of Buyer to know, understand and comply with the work and safety laws and regulations in effect and governing Buyer's use of the equipment. To the extent governing law requires inspections, records keeping and/or after-purchase modifications to the equipment, it is the responsibility of the Buyer to arrange for and comply with such requirements and any associated costs are the sole responsibility of the Buyer. Vidir assumes no responsibility or liability for Buyer's performance under or compliance with such laws and regulations.

If the equipment is found by the Buyer to be defective, the Buyer must notify Vidir within a period of 30 days of discovery of the defect.

The Buyer is expected to provide access to all equipment covered by this warranty. Vidir shall not be responsible for any expense incurred in removing, replacing, or refinishing any part of the building structure necessary for the performance of Vidir's obligations under this warranty.

In the event that any alterations, additions, adjustments or repairs are made by others without Vidir's prior written consent, Vidir may, at its option, immediately terminate this warranty by providing written notice to the Buyer.

In the event Vidir is required to make emergency calls, repairs and/or replacements under this warranty occasioned by the Buyer or any user's negligence, improper operation or misuse of the equipment or by fire, explosion, flooding, the elements, strikes, labour troubles, vandalism, riots or civil commotion, or by any cause beyond Vidir's control. The Buyer shall reimburse Vidir for such emergency calls, repairs and/or replacements in accordance with the then current rates for such services.

Warranty & Limitation of Liability

Vidir's liability for injury to persons or property shall, in any event, be limited to that caused directly by its negligence.

Vidir shall not be liable, however, on any account, for any damage or loss to the Buyer or its dealers, representatives, affiliates or agents resulting from business interruption, inconvenience, loss of profits, or special or, indirect or consequential damage. Vidir shall not be deemed to guarantee or warrant the continuing operation or operating efficiency of the equipment covered, nor shall Vidir be liable for any breakdowns thereof or for any damage to any other property of the Buyer not covered by this warranty but resulting from any breakdowns in or operating mishaps of the equipment covered.

Should any payment due by the Buyer become thirty days or more delinquent, Vidir may terminate this warranty by written notice, and all moneys owed Vidir shall be immediately payable on demand.

This warranty is not transferable or assignable by the Buyer.

Vidir reserves the right to determine, in its sole and absolute discretion the best means and methods to be employed for any corrective or repair work deemed necessary by Vidir pursuant to this warranty.