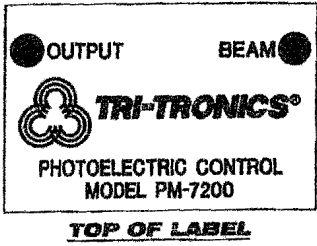
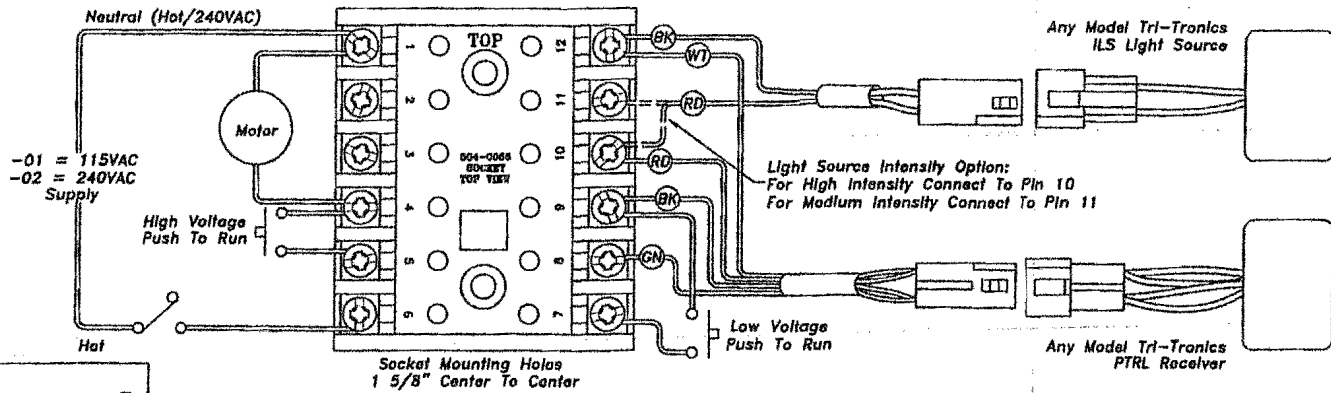
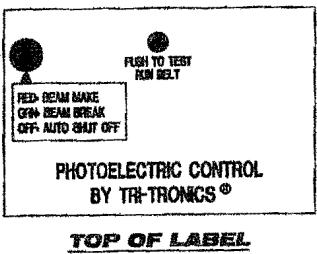
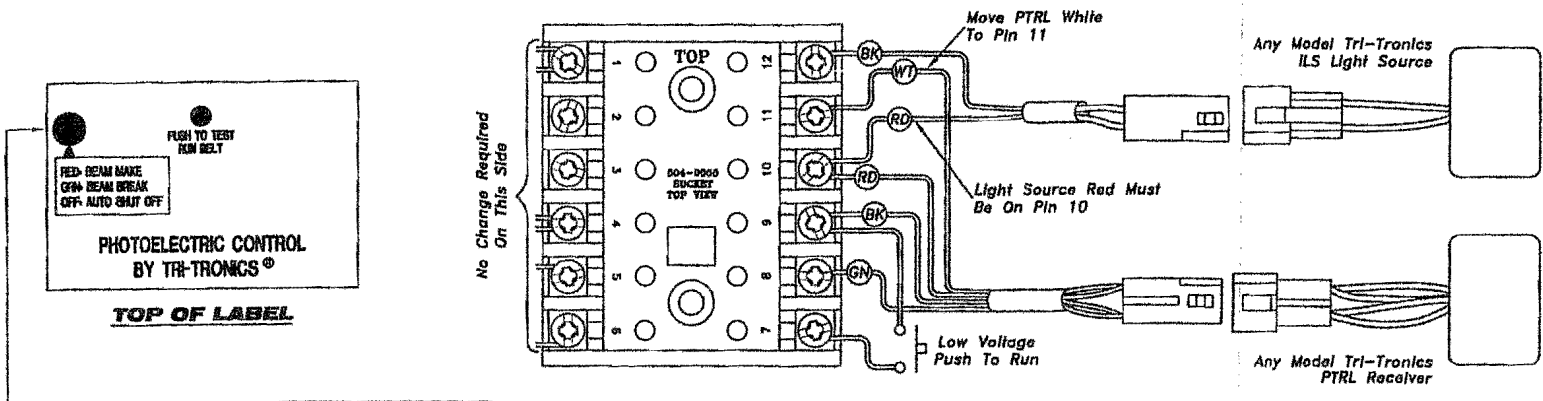


PM-7200 CHECKSTAND CONTROL



PM-7400 CHECKSTAND CONTROL



070-0166

POWER INPUT: -01=115VAC @50/60HZ @1 WaH } EXCLUSIVE OF
 -02=240VAC @50/60HZ @1 WaH } LOAD

OUTPUT: AC TRIAC WILL DRIVE UP TO 2.5 AMPS
 MOTOR (2 AMPS @ 240VAC)

NOTE: IF OUTPUT IS SHORTED DAMAGE TO
 TRIAC WILL OCCUR. FACTORY
 REPLACEMENT REQUIRED.
 (WARRANTY VOID IF OUTPUT IS SHORTED)

- PUSH TO RUN IS CONFIGURABLE ON POWER UP AS FOLLOWS:
1. HOLD TEST BUTTON DURING POWER UP TO ALTERNATE TO THE OPPOSITE STATE
 - A. POWER INDICATOR FLASHING GREEN = BELT STOPS AT BEAM BREAK (FACTORY DEFAULT)
 - B. POWER INDICATOR FLASHING RED = BELT CONTINUES THRU BEAM BREAK
 - C. SETTING RETAINED ON POWER OFF

PM-7200 TO PM-7400 AUTOMATIC ADJUSTING CONTROL WIRING CONVERSION

TRI-TRONICS TAMPA, FLORIDA	
DWG NO. A9551	REV.: B
SHEET 1 OF 1	SCALE: 1/1
DATE: 10/12/04	BY: S.F.F.