

CLEANSTAR

Model 2500-CW

Installation Instructions for General Contractor

DARLING
INTERNATIONAL

Darling International Inc.
CleanStar Office
PO Box 3222
3350 Greenfield Rd. Bldg B
Melvindale, MI 48122
Phone: 800-486-0101
Fax: 313-294-2403



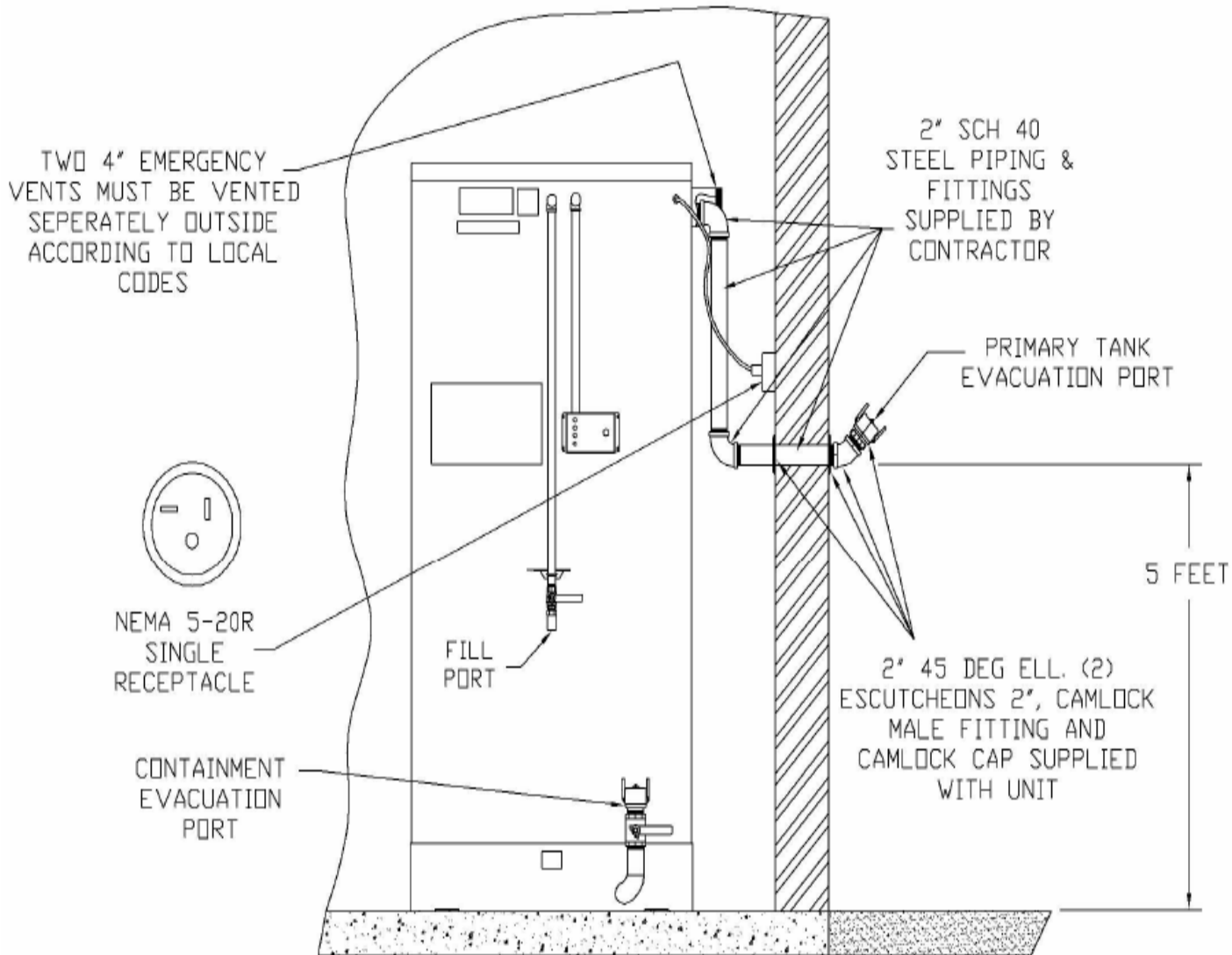
December 9, 2011

Installation Instructions

2500-CW double wall containment tank

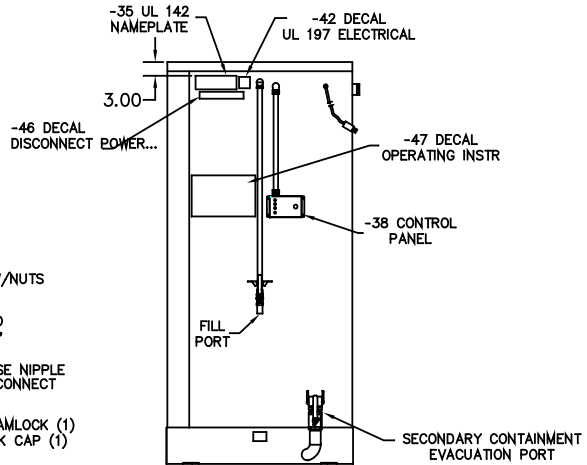
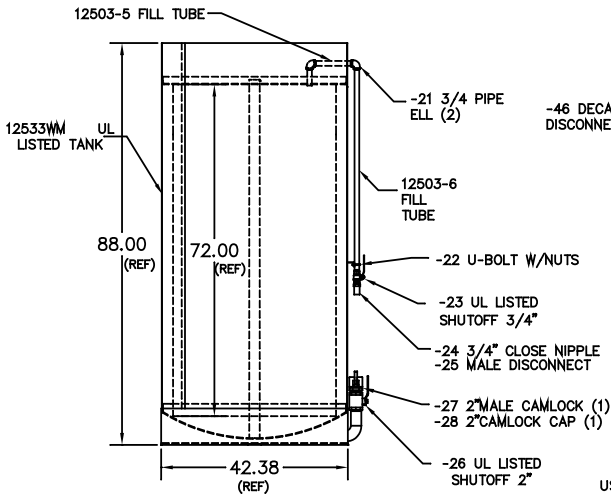
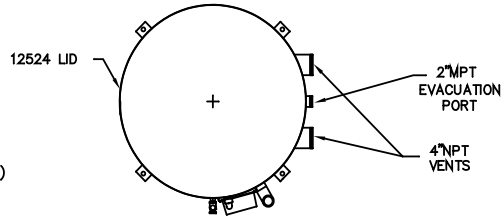
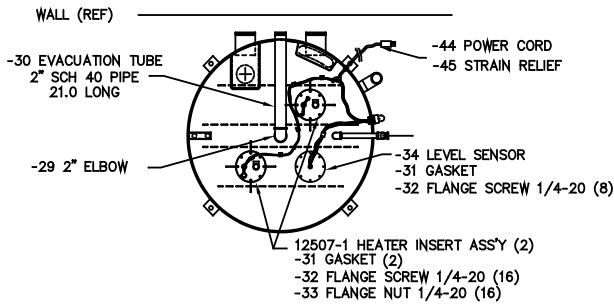
1. Locate the tank so the load pipe and the two emergency vents are towards the wall (see drawings).
2. Plumb the 2-inch load pipe, which is located between the two 4-inch emergency vents at the top of the tank, to the outside of the building with the cam fitting located 5 feet above grade. This will allow the service truck driver easy access. (Do not plumb the containment port at the bottom of the tank to the outside.)
3. Plumb both 4-inch emergency vents to the outside according to local code and Walmart specifications. Unions at the tank are recommended. ***If code calls for these vents to run straight up through the roof of the building, the tank will NOT support the weight of these vent pipes. These pipes must be supported to the building in some way.***
4. Plug the power cord into a 110 Volt 2 pole 3 wire straight blade single dedicated receptacle (NEMA 5-20R) on the wall located near the top of the tank. **(SEE DIAGRAM ON NEXT PAGE)**
5. Install the power failure alarm 9-volt battery into the underside of the control panel. Remove the small cover plate from under the control panel then pull out the battery holder and install the battery. Return the cover plate to control panel. To test alarm, interrupt power to the unit.
6. Plug caddy into control panel and test by pushing the button on the control panel.

2500CW Installation Drawing



Tank Construction

REVISION	
LTR	DESCRIPTION
A	mounted control panel on unit relocated conduit- removed power cable ass'y and control cable ass'y 2/18/06



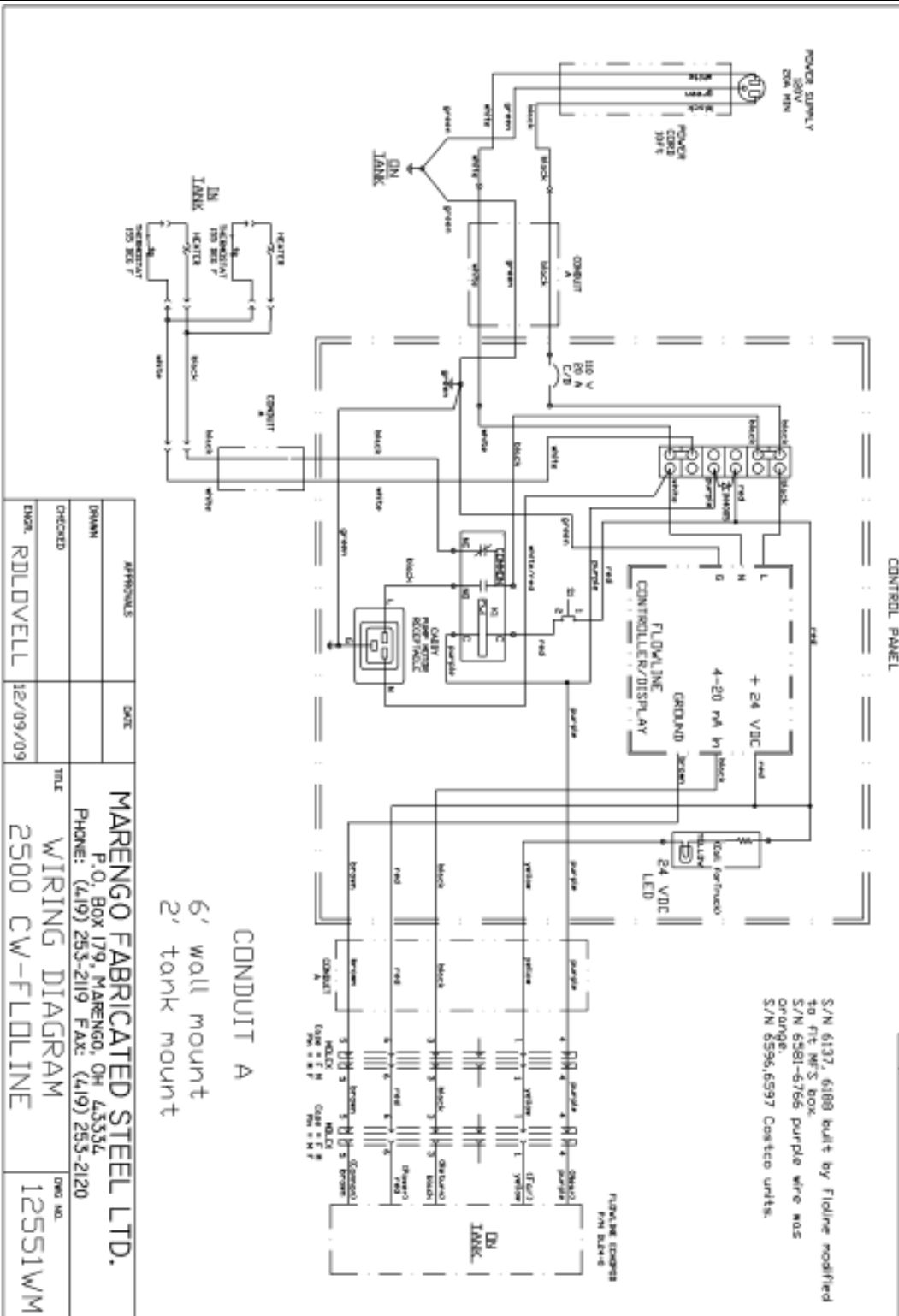
USE -50 THREAD SEALANT (RECTORSEAL#5) ON ALL PIPE TREADS

SHIP LOOSE WITH TANK

- 27 2" MALE CAMLOCK (1)
- 28 2" CAMLOCK CAP (1)
- 48 2" ESCUTCHEON (2)
- 49 2" ELBOW 45 DEG (1)

APPROVALS	DATE	MARENGO FABRICATED STEEL LTD.	
DRAWN		P.O. Box 179, Marengo, Oh 43334	
CHECKED		Phone/Fax: (419) 253-2119	
ENGR. RDLOVELL	01/05	TITLE	DWG NO.
		TANK ASSEMBLY	12512WM

Wiring Diagram



APPROVALS		DATE
DESIGN		
CHECKED		
ENGR.	RDL/DVELL	12/09/09

TITLE		DRG. NO.
MARENGO FABRICATED STEEL LTD.		12551WM
P.O. BOX 179, MARENGO, OH 43334		
PHONE: (419) 253-2119 FAX: (419) 253-2120		
2500 CW-FLDLINE		

S/N 6137, 6188 built by Fldline modified to fit MFS box.
 S/N 5281-5766 purple wire was orange.
 S/N 6596, 6597 Coslice units.