

! WARNING

EUROPEAN USERS

400V 50Hz SUPPLY DETAILS ARE INCLUDED WITH ELECTRICAL CONTROL BOX. DISREGARD SUPPLY WIRING DETAILS IN THIS MANUAL

**IMPORTANT SAFETY INSTRUCTIONS
SAVE THESE INSTRUCTIONS**

PLEASE READ THE ENTIRE CONTENTS OF THIS MANUAL PRIOR TO INSTALLATION AND OPERATION. BY PROCEEDING WITH LIFT INSTALLATION AND OPERATION YOU AGREE THAT YOU FULLY UNDERSTAND AND COMPREHEND THE FULL CONTENTS OF THIS MANUAL. FORWARD THIS MANUAL TO ALL OPERATORS. FAILURE TO OPERATE THIS EQUIPMENT AS DIRECTED MAY CAUSE INJURY OR DEATH.

MAN REV C 07-15-2016
P/N 5900371

**9,000 LB / 4.082 KG CAPACITY
SURFACE MOUNTED TWO-POST LIFTS**

**MODELS:
XPR-9S
XPR-9S-LP
XPR-9TS**



READ FIRST



Do not operate this machine until you read and understand all the dangers, warnings and cautions in this manual.

ORIGINAL INSTRUCTIONS IN ENGLISH LANGUAGE



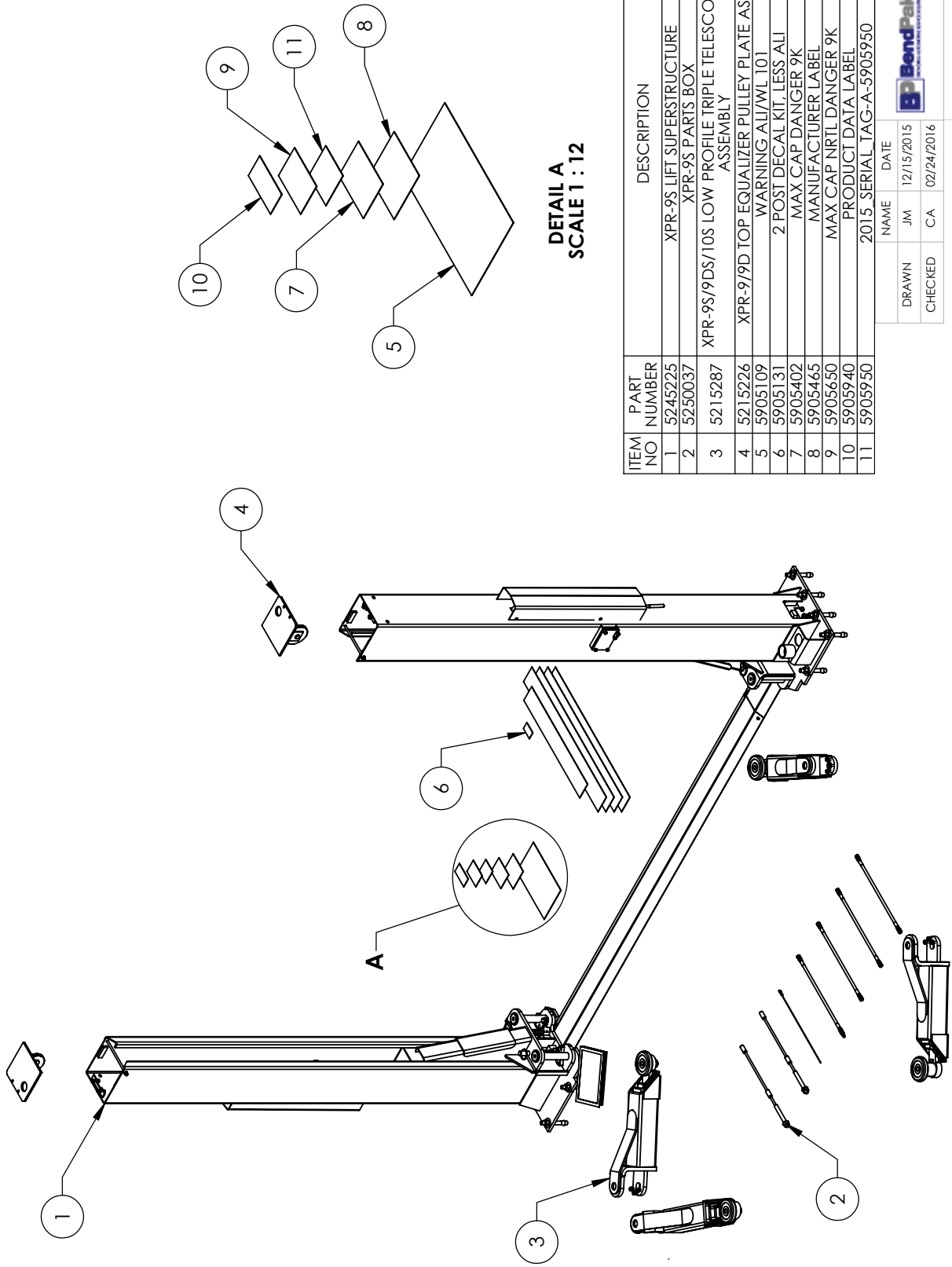
RECEIVING

The shipment should be thoroughly inspected as soon as it is received. The signed Bill of Lading is acknowledgement by the shipping carrier as receipt of this product as listed in your invoice as being in a good condition of shipment. If any of these goods listed on this Bill of Lading are missing or damaged, do not accept goods until the shipping carrier makes a notation on the freight bill of the missing or damaged goods. Do this for your own protection.

BE SAFE

Your new lift was designed and built with safety in mind. However, your overall safety can be increased with proper training and thoughtful operation on the part of the operator. **DO NOT** operate or repair this equipment without reading this manual and the important safety instructions shown inside. Keep this operation manual near the lift at all times. Make sure that ALL USERS read and understand this manual.





DETAIL A
SCALE 1 : 12

ITEM NO	PART NUMBER	DESCRIPTION	QTY	REV
1	5245225	XPR-9S LIFT SUPERSTRUCTURE	1	P
2	5250037	XPR-9S PARTS BOX	1	A
3	5215287	XPR-9S/9DS/10S LOW PROFILE TRIPLE TELESCOPING ARM ASSEMBLY	4	C
4	5215226	XPR-9/9D TOP EQUALIZER PULLEY PLATE ASSEMBLY	2	J
5	5905109	WARNING ALI/M/L 101	1	--
6	5905131	2 POST DECAL KIT, LESS ALI	1	C
7	5905402	MAX CAP DANGER 9K	1	--
8	5905465	MANUFACTURER LABEL	1	--
9	5905650	MAX CAP NRTL DANGER 9K	1	--
10	5905940	PRODUCT DATA LABEL	1	--
11	5905950	2015 SERIAL TAG-A-5905950	1	--

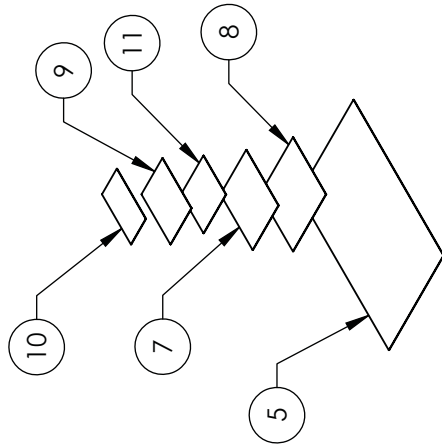
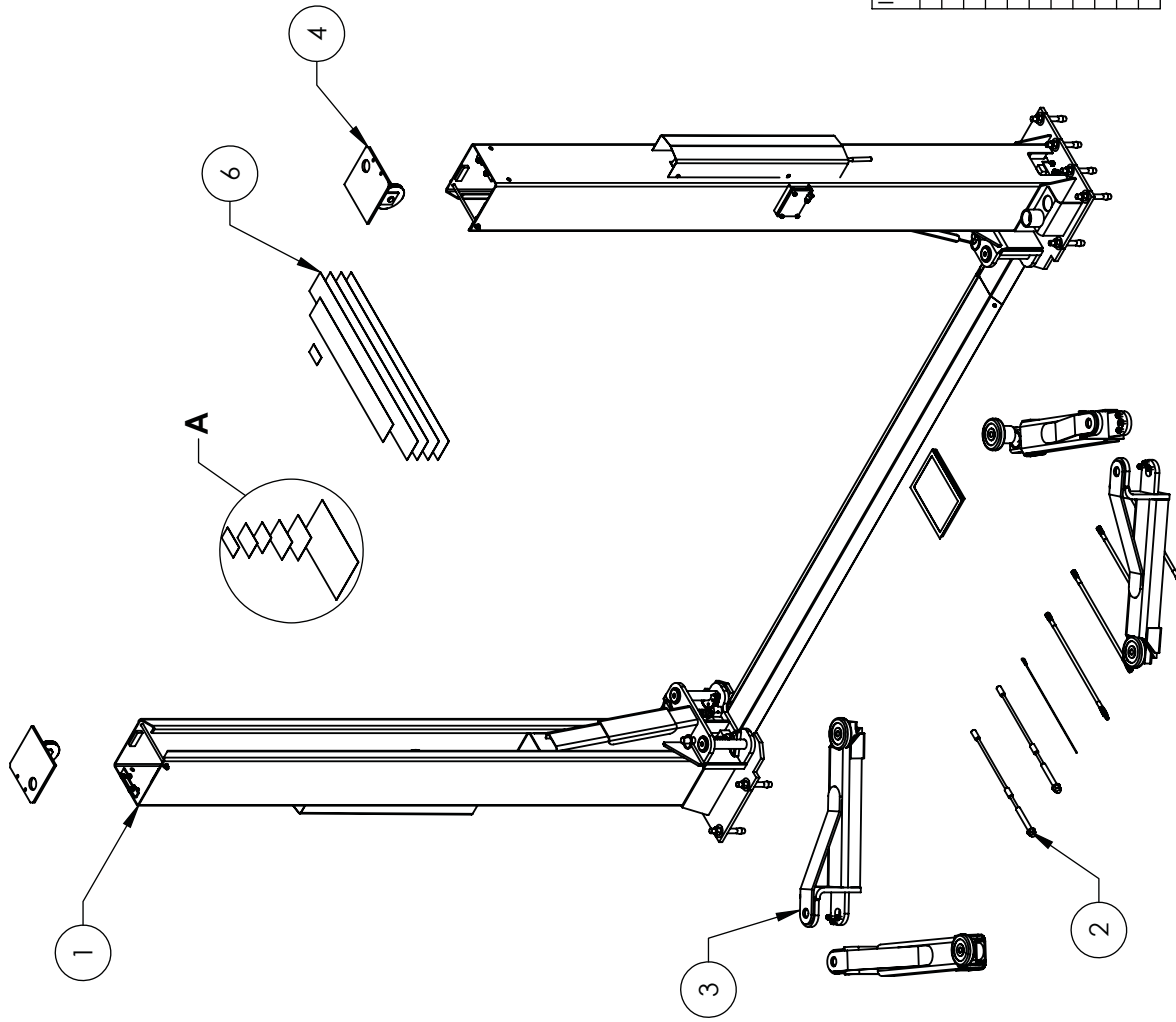
NAME	DATE
DRAWN JM	12/15/2015
CHECKED CA	02/24/2016



TITLE: XPR-9TS PRODUCTION
LIFT VER E

SIZE DWG. NO. **A** 5260553 REV **A**

SCALE: 1:30 SHEET 1 OF 2



DETAIL A
SCALE 1 : 12

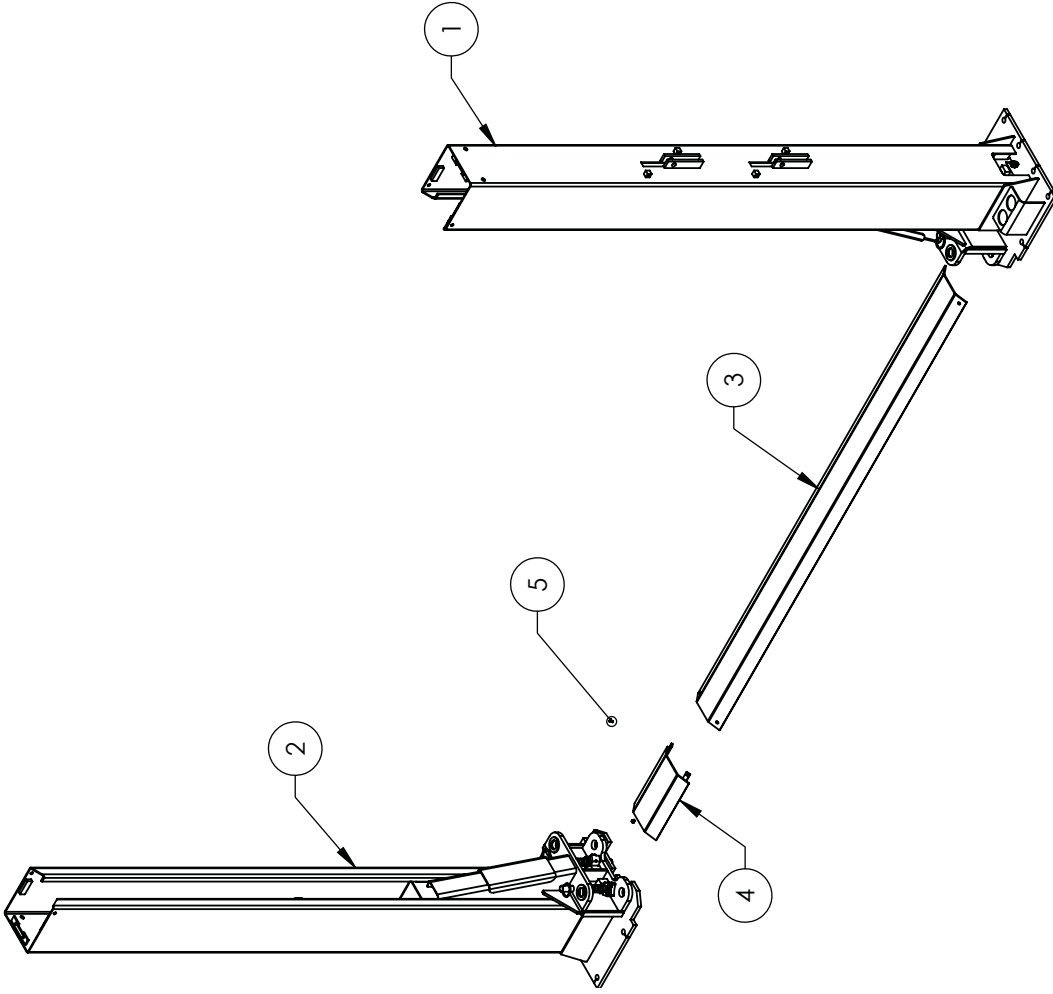
ITEM NO	PART NUMBER	DESCRIPTION	QTY	REV
1	5245225	XPR-9S LIFT SUPERSTRUCTURE	1	P
2	5250037	XPR-9S PARTS BOX	1	A
3	5215274	XPR-9S/9DS/10S-LP MEDIUM ARM ASSEMBLY	4	C
4	5215226	XPR-9/9D TOP EQUALIZER PULLEY PLATE ASSEMBLY	2	J
5	5905109	WARNING ALI/W/L 101	1	---
6	5905131	2 POST DECAL KIT, LESS ALI	1	C
7	5905402	MAX CAP DANGER 9K	1	---
8	5905465	MANUFACTURER LABEL	1	---
9	5905650	MAX CAP NRTL DANGER 9K	1	---
10	5905940	PRODUCT DATA LABEL	1	---
11	5905950	2015 SERIAL TAG-A-9905950	1	---

DATE
12/15/2015
02/24/2016

BendPak
1645 LEMONWOOD DR.
SANTA PAULA, CA 93060

TITLE:
**XPR-9S-LP PRODUCTION
LIFT VER E**

SIZE DWG. NO. **A** 5260557
REV **A**



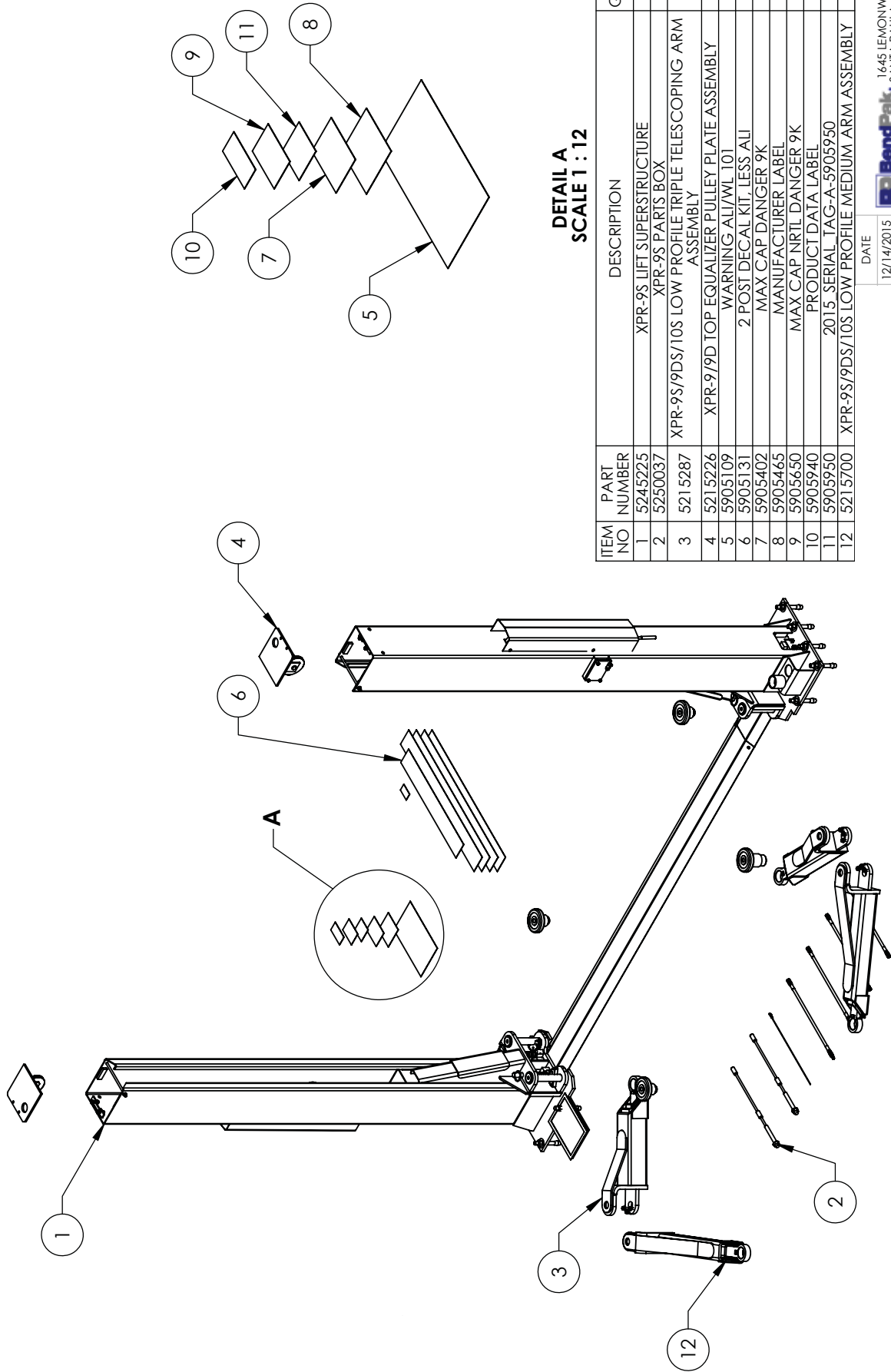
ITEM NO	PART NUMBER	DESCRIPTION	QTY	REV
1	5215391	XPR-9S OFF SIDE POST ASSEMBLY	1	P
2	5215392	XPR-9S POWER SIDE POST ASSEMBLY	1	P
3	5210018	XPR-9 GROUND PLATE	1	D
4	5600510	XPR-9 FLOORPLATE EXTENSION WELDMENT	1	A
5	5530079	BPHS M6 X1.0X10	2	-

DO NOT SCALE DRAWING

NAME	DATE
TM	08/31/2010



TITLE: XPR-9S LIFT SUPERSTRUCTURE	
SIZE DWG. NO.	A 5245225
REV	P



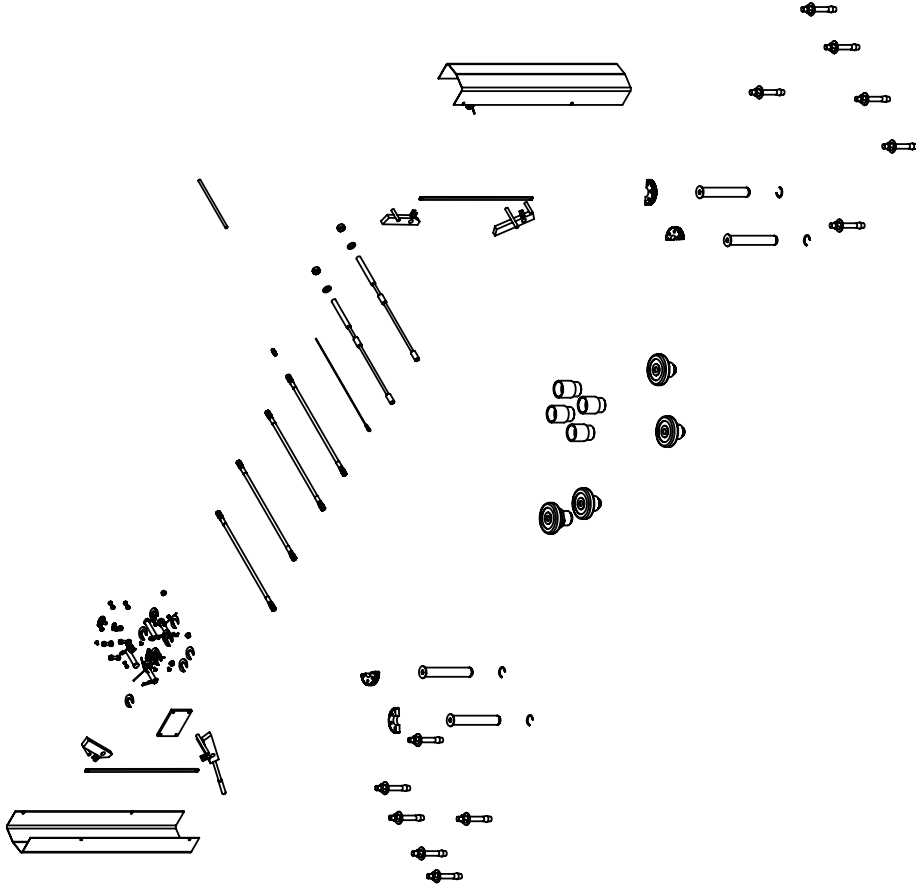
DETAIL A
SCALE 1 : 12

ITEM NO	PART NUMBER	DESCRIPTION	QTY	REV
1	5245225	XPR-9S LIFT SUPERSTRUCTURE	1	P
2	5250037	XPR-9S PARTS BOX	1	A
3	5215287	XPR-9S/9DS/10S LOW PROFILE TRIPLE TELESCOPING ARM ASSEMBLY	2	C
4	5215226	XPR-9/9D TOP EQUALIZER PULLEY PLATE ASSEMBLY	2	J
5	5905109	WARNING ALI/WL 101	1	--
6	5905131	2 POST DECAL KIT, LESS ALI	1	C
7	5905402	MAX CAP DANGER 9K	1	--
8	5905465	MANUFACTURER LABEL	1	--
9	5905650	MAX CAP NRTL DANGER 9K	1	--
10	5905940	PRODUCT DATA LABEL	1	--
11	5905950	2015 SERIAL TAG-A-5905950	1	--
12	5215700	XPR-9S/9DS/10S LOW PROFILE MEDIUM ARM ASSEMBLY	2	C

DATE
12/14/2015
02/24/2016



TITLE: XPR-9S PRODUCTION LIFT VER E
 SIZE DWG. NO. A 5260558
 SCALE: 1:30
 SHEET 1 OF 2



ITEM NO.	PART NUMBER	DESCRIPTION	QTY	REV
1	5174215	XPR-9 PARTS BAG	1	J
2	5215704	ROUND ADJUSTABLE LIFT PAD ASSEMBLY	4	B
3	5701214	RFL-8000 XPR-9 SAFETY CLOSURE COVER	2	F
4	5570104	SP-6FR XPR-9 HYDRAULIC HOSE ASSY Ø6.35 x 2985mm DS	1	D
5	5570103	XPR-9 HYDRAULIC HOSE ASSY Ø6.35 x 1359mm DS	2	E
6	5570176	XPR-9D/10 HYDRAULIC HOSE EXTENSION ASSY Ø6.35 x 330mm DS	1	D
7	5550095	FIG NPL-04 JIC x-04 JIC	1	-
8	5595359	XPR-9 EQUALIZER CABLE ASSEMBLY Ø10 x 9507mm DBST	2	B
9	5595161	XPR-9 Ø2.4mm x 6400 SAFETY CABLE	1	E
10	5505116	XPR-9/10 LIFT HEAD PIN WELDMENT	4	D
11	5540281	C RING Ø38mm OD 5103-150	4	A
12	5715003	POWER UNIT VIBRATION DAMPENER	1	B
13	5731121	XPR-9 SAFETY LINKAGE BAR	2	F
14	5600370	XPR-9 SAFETY WELDMENT #1	1	J
15	5600372	XPR-9 SAFETY WELDMENT #3	2	G
16	5600371	XPR-9 SAFETY WELDMENT #2	2	H
17	5545342	WASHER M18 FLAT	2	-
18	5535358	NUT M18 x 2.5 NL	2	-
19	5736604	TWO POST LIGHT DUTY BOLT ON ARM RESTRAINT GEAR	4	E
20	5746167	DOUBLE THREADED ROD M10 x 1.5 x 27.5	2	B
21	5530307	AB 3/4" x 5"	12	-
22	5905151	SAFETY TIPS CARD AL1ST90	1	-
23	5900147	SAFETY MANUAL ALL/SM 93-1	1	-
24	5900152	ALIGN OJM OPERATION INSPECTION & MAINTENANCE	1	-
25	5900280	ALL/FP FRAME ENGAGING LIFTS GUIDE	1	-
26	5900048	XPR-9 INSTALLATION MANUAL	1	-
27	5746192	ARM ADAPTER, MEDIUM	4	C

DATE

12/15/2015

BendPak 1645 LEMONWOOD DR.
SANTA PAULA, CA 93060

TITLE:

XPR-9S PARTS BOX

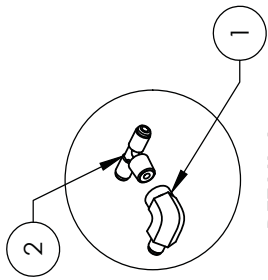
SIZE DWG. NO.

A

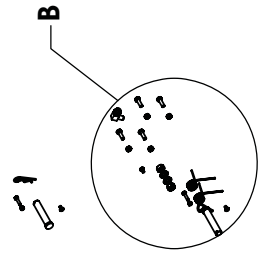
5250037

REV

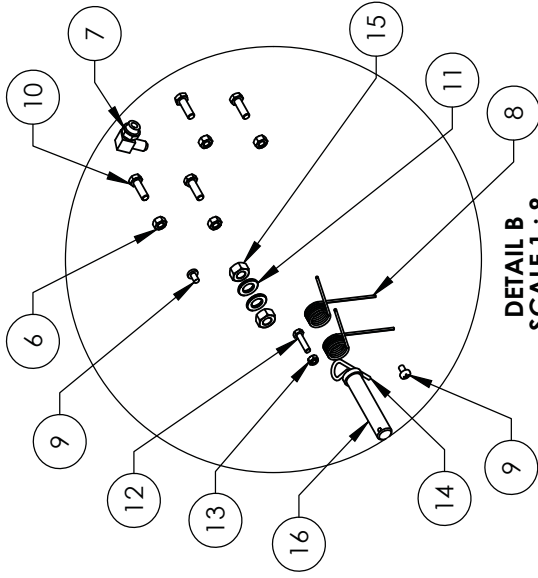
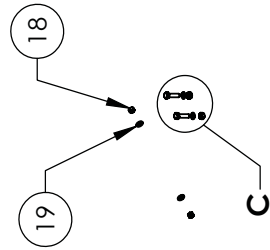
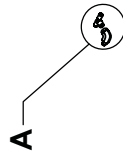
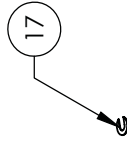
A



DETAIL A
SCALE 1:5



DETAIL C
SCALE 1:5



DETAIL B
SCALE 1:8

ITEM NO.	PART NUMBER	DESCRIPTION	QTY	REV
1	5550153	FIG-ELB-.04 NPT F x .04 JIC	1	-
2	5550181	FIG-TFE-.04 JIC x .04 JIC x .04 NPT	1	-
3	5545200	WASHER M10 x Ø18 SL	4	-
4	5535998	NUT M10 x 1.5	4	-
5	5530760	HEX HEAD BOLT M10x1.25x35	4	-
6	5535001	NUT M8 x 1.25 NL	4	-
7	5550103	FIG-ELB-.04 JIC-.06 ORB	1	-
8	5540075	2.5 WIRE DIA., Ø20.5 x 7.5 LG	4	A
9	5530261	PHS M6 x 1 x 10	8	-
10	5530010	HHB M8 x 1.25 x 25	4	-
11	5545347	WASHER M12 FLAT WASHER	2	-
12	5530756	HHB M6 x 1 x 25	4	-
13	5535357	NUT M6 x 1.0 NL	4	-
14	5505350	MODEL#211 HAIR PIN/ LARGE	4	-
15	5535354	NUT M12 x 1.75	2	-
16	5505001	GP-7/PL-6000/XPR SERIES SAFETY CLEVIS PIN	4	A
17	5545535	C WASHER SHIM FOR LIFTS	20	-
18	5535013	NUT M10 x 1.5 NL	4	-
19	5545341	WASHER M10 x Ø20 FLAT	4	-
20	5505031	ROTOR CLIP 12mm SS	1	-

DATE
11/20/2009
02/19/2016

BendPak
1645 LEMONWOOD DR.
SANTA PAULA, CA 93060

TITLE: XPR-9 PARTS BAG

SIZE DWG. NO. **A** 5174215
REV **J**