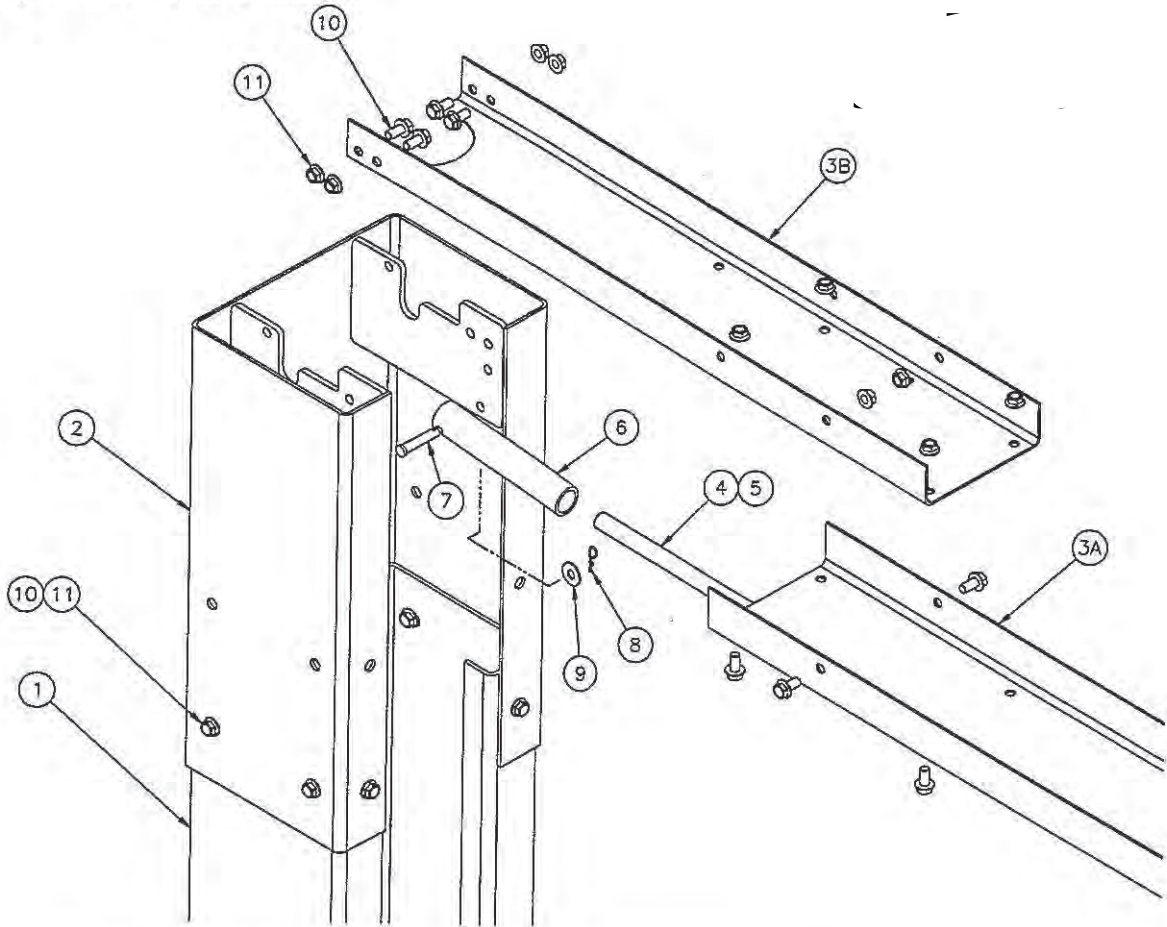


PARTS BREAKDOWN

Fig A. Column & Overhead



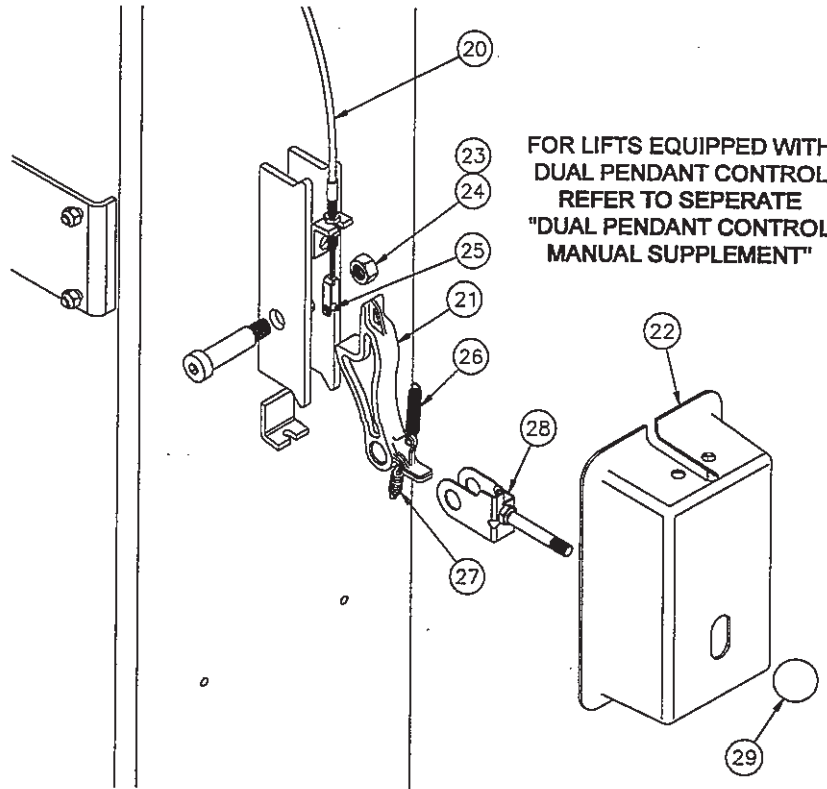
ITEM #	PART #	QTY/LIFT	DESCRIPTION
1	A1010-P	1	POWER COLUMN WELD
	A1010-I	1	IDLER COLUMN WELD
2	A1055-0	2	COLUMN EXTENSION WELD - CL9
	A1055-1		COLUMN EXTENSION WELD - CL9-1
	A1055-2		COLUMN EXTENSION WELD - CL9-2
3A	A1060	1	OVERHEAD CHANNEL (MID SECTION)
3B	A1061	2	OVERHEAD CHANNEL (END SECTION)
4	36074	1	SHUTOFF BAR
5	31129	1	PAD
6	36027	1	OVERHEAD LIMIT SWITCH
7	A1064	2	3/8 DIA x 1 7/8 Lg. CLEVIS PIN (SHUTOFF BAR)
8	40124	2	HAIRPIN COTTER PIN
9	31036	7	3/8" FLAT WASHER
10	A1153	36	3/8-16NC HEX.FLG.HD.C.S X 3/4" Lg.
11	A1154	36	3/8-16NC HEX.FLG.NUT

Replace all worn or broken parts with genuine **Challenger Lifts Inc.** parts.
 Contact your local Challenger Lifts Parts Distributor

Model CL9

PARTS BREAKDOWN (continued)

Fig B. Lock.



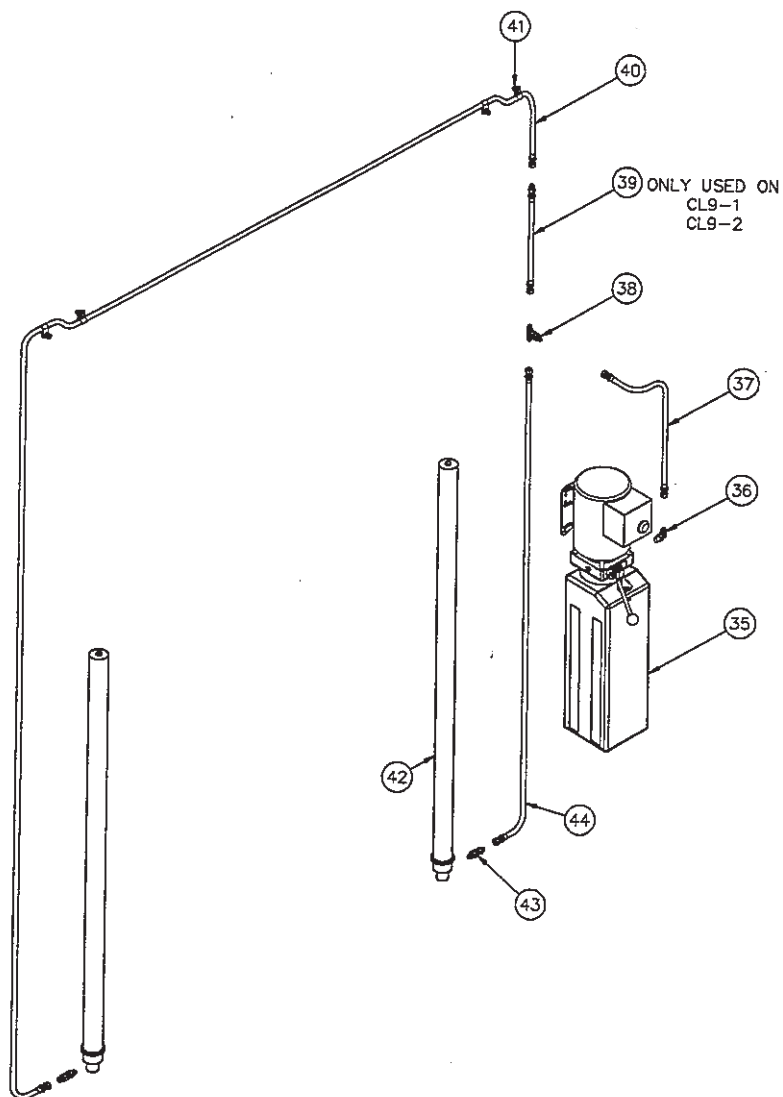
ITEM #	PART #	QTY/LIFT	DESCRIPTION
20	A1135-0	1	LOCK RELEASE CABLE ASSEMBLY – CL9-0
	A1135-1		LOCK RELEASE CABLE ASSEMBLY – CL9-1
	A1135-2		LOCK RELEASE CABLE ASSEMBLY – CL9-2
21	A1140	2	LOCK PAWL
22	A1133	2	LOCK COVER
23	30020	2	LOCK PIN (5/8 x 1 1/2" Lg. SHOULDER BOLT)
24	37013	2	LOCK PIN RETAINER (1/2-13NC HEX LOCK NUT)
25	37119	1	CLEVIS PIN KIT
26	A1131	2	LOCK SPRING (3/8" O.D.)
27	A1132	1	CABLE SPRING (1/2" O.D.) – Idler side ONLY
28	A1141	1	LOCK RELEASE CLEVIS ASSEMBLY – Power side ONLY
29	36096	1	BALL HANDLE – Power side ONLY

Replace all worn or broken parts with genuine **Challenger Lifts Inc.** parts.
 Contact your local Challenger Lifts Parts Distributor

Model CL9

PARTS BREAKDOWN (continued)

Fig C. Hydraulics



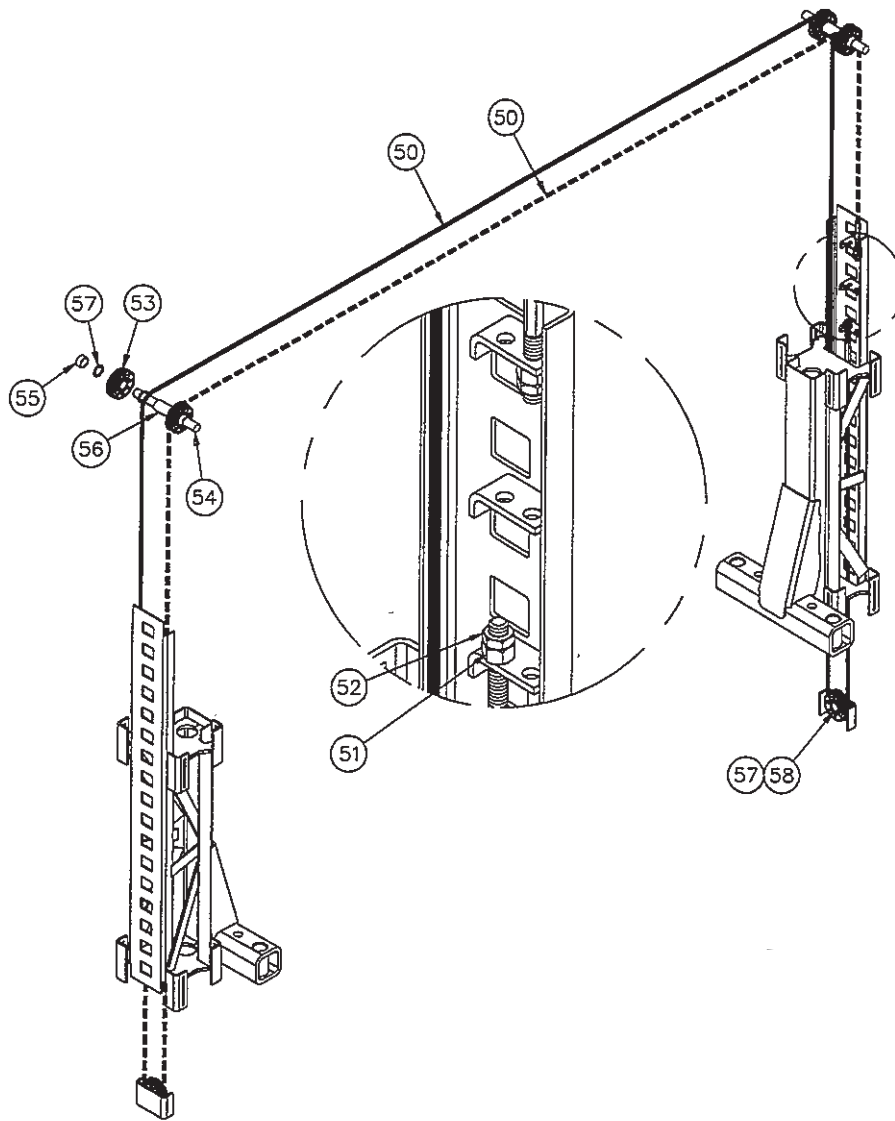
ITEM #	PART #	QTY/LIFT	DESCRIPTION
35	A1201-15	1	POWER UNIT 1ph, 60 Hz, 208-230V
	A1203-15		POWER UNIT 3ph, 60 Hz, 208-230/460V
36	16167	1	HYD ELBOW, 9/16 O-RING MALE TO #6 MALE FLARE
37	A1123-PU	1	HYD HOSE ASSEMBLY, POWER UNIT (22" LONG)
38	A1120	1	BULKHEAD TEE, #6 MALE 37 DEGREE FLARE
39	39101-024	1	COLUMN EXTENSION HOSE, CL9-1 (24" LONG)
	39101-048	1	COLUMN EXTENSION HOSE, CL9-2 (48" LONG)
40	A1123-I	1	HYD HOSE ASSEMBLY, IDLER COLUMN (326" LONG)
41	A1122-12	7	HOSE CLAMP
42	16138	2	CYLINDER (68" STROKE X 2" BORE)
43	A1121	2	STRAIGHT ADAPTER, 9/16 MALE O-RING TO #6 MALE FLARE
44	A1123-P	1	HYD HOSE ASSEMBLY, POWER COLUMN (81" LONG)

Replace all worn or broken parts with genuine **Challenger Lifts Inc.** parts.
Contact your local Challenger Lifts Parts Distributor

Model CL9

PARTS BREAKDOWN (continued)

Fig D. Synchronizer



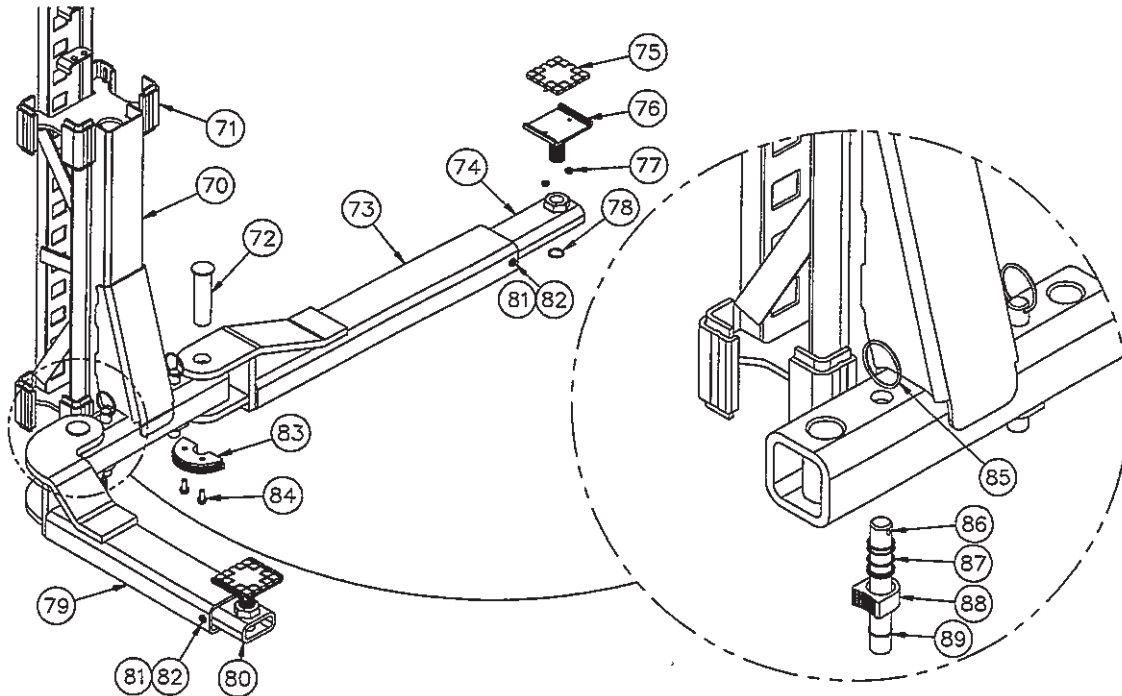
ITEM #	PART #	QTY/LIFT	DESCRIPTION
50	A1115-0	2	SYNCHRONIZER CABLE - CL9-0 (32'-8") [Cable Pack #A1003-0]
	A1115-1		SYNCHRONIZER CABLE - CL9-1 (34'-8") [Cable Pack #A1003-1]
	A1115-2		SYNCHRONIZER CABLE - CL9-2 (36'-8") [Cable Pack #A1003-2]
51	A1116	4	1/2-20NF HEX NUT
52	A1117	4	1/2-20NF HEX JAM NUT
53	A1041	6	SHEAVE ASSEMBLY (3 1/2" DIA. X 1/4" GROOVE)
54	A1062	2	SHEAVE PIN
55	A1063-S	4	SHORT SHEAVE SPACER
56	A1063-L	2	LONG SHEAVE SPACER
57	36013	10	1" I.D. SPACER WASHER
58	36014	2	1" EXT. RETAINING RING

Replace all worn or broken parts with genuine **Challenger Lifts Inc.** parts.
Contact your local Challenger Lifts Parts Distributor

Model CL9

PARTS BREAKDOWN (continued)

Fig E. Carriage & Arms



ITEM #	PART #	QTY/LIFT	DESCRIPTION
70	A1025	2	CARRIAGE WELD
71	A1040	16	SLIDE BLOCK
72	A1078	4	ARM PIN WELD
73	A1091	2	REAR FEMALE ARM WELD
74	A1094-R	2	MALE ARM WELD (REAR)
75	A1104	4	FOOT PAD RUBBER INSERT
76	A1101	4	FOOT PAD WELD
77	31061	8	1/4-20 KEPS NUT
78	39111	4	FOOT PAD RETAINER RING
79	A1086-P	1	FRONT FEMALE ARM WELD (POWER)
	A1086-I	1	FRONT FEMALE ARM WELD (IDLER)
80	A1094-F	2	MALE ARM WELD (FRONT)
81	31305	4	3/8 MALE ARM RETAINER SCREW
82	31037	4	3/8 LOCK WASHER
83	A1070	4	INNER GEAR
84	12568	8	3/8-16NCx1 Lg. HEX . FLG.LOCK.HD.C.S. GR.5 ZN PLT
85	A1075	4	PULL RING
86	A1073	4	SHAFT
87	31109	4	COMPRESSION SPRING (RESTRAINT SHAFT)
88	A1072	4	OUTER GEAR
89	36014	4	1" EXT. RETAINING RING
	A1090	2	REAR ARM ASSY (ITEMS NO: 73, 74, 81, 82)
	A1085-P	1	FRONT ARM ASSY (POWER) (ITEMS NO: 79, 80, 81, 82)
	A1085-I	1	FRONT ARM ASSY (IDLER) (ITEMS NO: 79, 80, 81, 82)
	A1100	4	FOOT PAD ASSY (ITEMS NO: 75, 76, 77)
	A1077	4	ARM RESTRAINT SHAFT ASSY (ITEMS NO: 85, 86, 87, 88, 89)

Replace all worn or broken parts with genuine **Challenger Lifts Inc.** parts.
Contact your local Challenger Lifts Parts Distributor