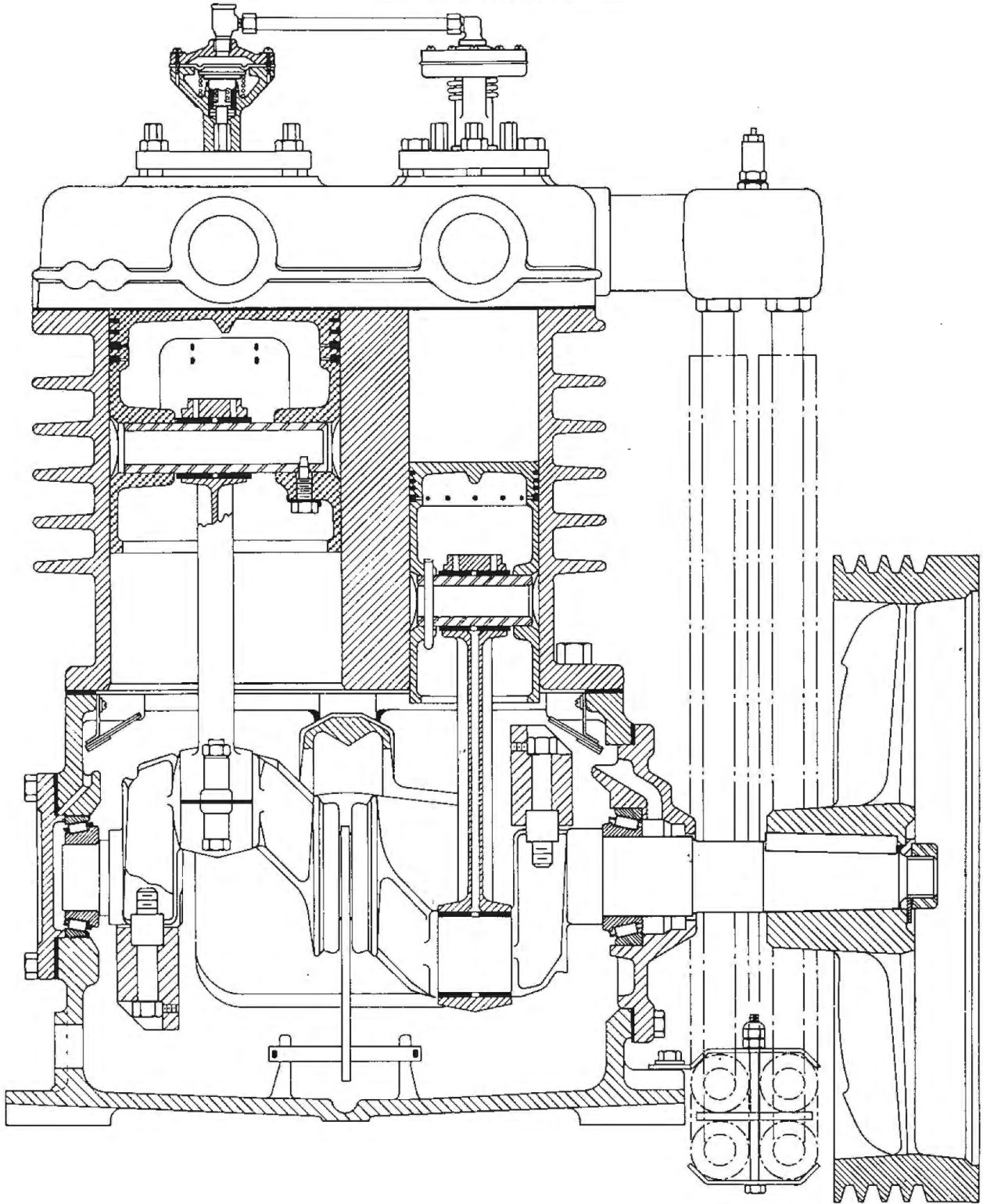


**PANZITTA SALES & SERVICE**  
72 George Avenue  
Wilkes-Barre, PA 18705  
570-822-6720 800-822-6720  
www.panzittasales.com

**PARTS LIST**  
**AIR COMPRESSOR**  
**MODEL C-98 (CURTIS)**  
**MODEL CB (U.S.-CURTIS)**

SIZE: 7-1/2" - 4-3/16" x 5"  
LOT C-9801 THRU C-9884

Form CAP-76-H  
Page 1  
October, 1988  
Supersedes CAP-76-G

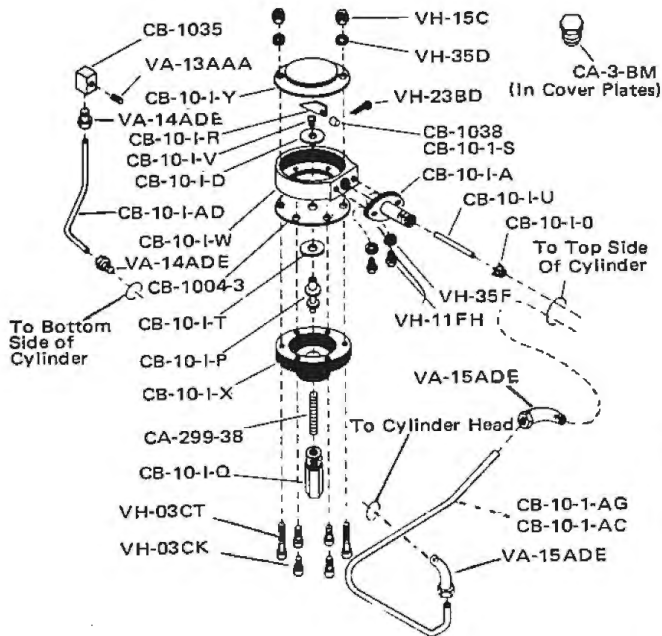


**CURTIS-TOLEDO, INC.**

# PARTS LIST

## VACUUM UNLOADER ASSEMBLY

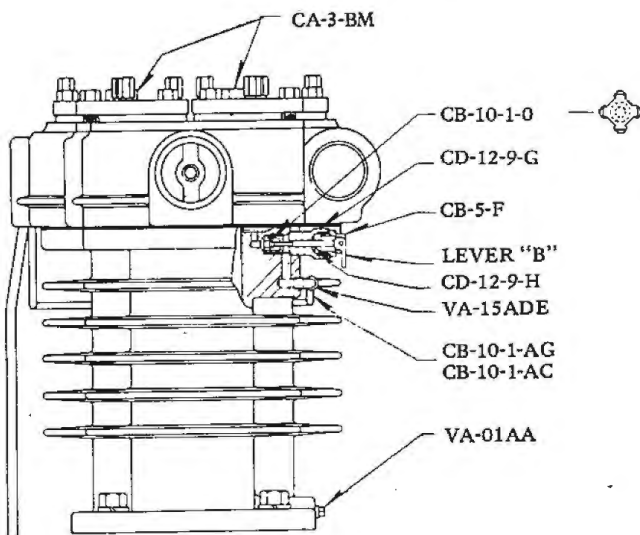
DISCONTINUED ON C-9856 & LATER



PART NO.	NO. REQ'D	DESCRIPTION
CA-3-BM	2	Solid Cap (9801 thru C-9855)
CA-299-38	1	Piston Spring
CB-10-1-A	1	Unloader Body Flange
CB-10-1-D	1	Diaphragm Disc
CB-10-1-O	1	Plunger
CB-10-1-P	1	Piston
CB-10-1-Q	1	Vacuum Cylinder
CB-10-1-R	1	Cam
CB-10-1-S	1	Cam Plug **Furnish CB-1038
CB-10-1-T	1	Diaphragm Protector
CB-10-1-U	1	Plunger Pin
CB-10-1-V	1	Diaphragm Screw
CB-10-1-W	1	Unloader Body
CB-10-1-X	1	Unloader Body Cap
CB-10-1-Y	1	Unloader Cover
CB-10-1-AC	1	Unloader Tubing (Cylinder to Head) (9801 thru 9812)
CB-10-1-AD	1	Unloader Tubing (Cylinder to Check Valve)
CB-10-1-AG	1	Unloader Tubing (Cylinder to Head) (9813 & Later)
CB-1004-3	2	Diaphragms (Set)
CB-1035	1	Check Valve
CB-1038	1	Cam Plug
VA-15ADE	2	Copper Tube Elbow, 1/8" MPT x 5/16" O.D. Tube
VH-23BD	1	Cotter Pin 1/16" x 1/2" (Cam Plug)
VH-35F	2	Kantlink Lockwasher, 1/4" x .109 x .062
VH-03CK	4	Filister Head Machine Screw, 10-32 x 1-1/4"
VH-03CT	2	Filister Head Machine Screw, 10-32 x 3"
VH-15C	2	Hex Head Nut, 10-32
VH-35D	2	Kantlink Lockwasher, No. 10 x .062 x .047
VH-11FH	2	Hex Head Cap Screws, 1/4" N.C. x 1"
VA-14ADE	2	Copper Tube Connection, 1/8" MPT x 5/16" O.D. Tube
VA-13AAA	1	Close Nipple, 1/8" MPT

## HAND UNLOADER ASSEMBLY

DISCONTINUED ON C-9856 AND LATER



PART NO.	NO. REQ'D	DESCRIPTION
CA-3-BM	2	Solid Cap
CB-5-F	1	Hand Unloader
CB-10-1-AC	1	Unloader Tubing (Cyl to Head) (9801 thru 9812)
CB-10-1-AG	1	Unloader Tubing (Cyl to Head) (9813 & Later)
CB-10-1-O	1	Plunger
CD-12-9-G	1	Hand Unloader Plug
CD-12-9-H	1	Hand Unloader Pin
VA-15ADE	2	Copper Tube Elbow, 1/8" MPT x 5/16" O.D. Tube
VA-01AA	1	Pipe Plug, 1/8" MPT

Give name and part number as shown and SERIAL NUMBER of compressor when ordering parts. Serial number appears on nameplate attached to crankshaft end plate on crankcase of compressor.

**PANZITTA SALES & SERVICE**  
72 George Avenue  
Wilkes-Barre, PA 18705  
570-822-6720 800-822-6720  
www.panzittasales.com



## PARTS LIST

## MODEL C-98 TWO STAGE

BODY PARTS & MISC.		
PART NO.	NO. REQ'D	DESCRIPTION
VH-01CC	4	Round Head Machine Screws, 10/32 x 3/8"
CA-2312	1	Gasket (Lo Oil Guard) (C-9868 & Later)
CA-2323	1	Flange Cover Plate (C-9868 & Later)
CA-2324	1	Flange (Oil Sight Glass) (C-9868 & Later)
CAX-221-1	1	Oiling Ring (9806 & Earlier)
CM-604	1	Small End Plate
CM-605	1	Large End Plate - For 9801 thru 9813, Furnish (1) CM-605 L.E. Plate with Cup & (1) R-580 Cone, For 9814 & Later Furnish CM-605 Only
CM-618	1	Breather Tube (9801 thru 9803)
CM-649	1	Crankcase with Cup
CM-660	1	Cylinder Head Gasket
CM-661	1	Side Door **Furnish CMA-618 Side Door with Breather and (1) CMA-620 Side Door Gasket
CM-663	1	Breather Cover
CM-664	1	Breather Valve
CM-665	1	Breather Cover Gasket
CM-670	1	Gasket Set
CM-672	1	Breather Tube (9804 thru 9813)
CM-677	1	Cylinder
CM-679	1	Oiling Ring (9807 & Later)
CM-681	1	Breather Tube (9814 thru C-9828)
CMA-602	1	Small End Plate Shim Set
CMA-612	1	Cylinder C-9856 & Later
CMA-618	1	Side Door with Breather Port (C-9860 & Later)
CMA-619	1	Side Door Baffle
CMA-620	3	Side Door Gasket
CMA-621	1	Side Door with Oil Filler Port (C-9860 & Later)
CMA-652	9	Stud, 5/8" N.C. x 2-1/4"
CW-9-AA	2	Crankcase End Baffles
CX-9-B	1	Side Door with Oil Filler Port **Furnish (1) CMA-621 Side Door and (1) CMA-620 Gasket
CX-9-C	1	Oil Filler Cap
CX-9-D	1	Oil Level Gauge
CX-9-I	1	Oil Ring Guide Pin
CX-216-2	1	Cylinder to Crankcase Gasket
CX-216-3	1	Large End Plate Gasket
VH-11KK	8	Hex Head Cap Screw, 3/8" N.C. x 1-1/4" (C-9859 & Earlier)
VH-35F	6	Kantlink Lockwashers, 1/4"
VH-23DH	2	Cotter Pin, 1/8" x 1"
VH-11FF	2	Hex Head Cap Screws, 1/4" N.C. x 3/4", (C-9868 & Later)
VH-11PK	12	Hex Head Cap Screws, 1/2" N.C. x 1-1/4"
VH-11KM	8	Hex Head Cap Screws, 3/8" N.C. x 1-1/2" (C-9860 & Later)
VH-01FC	4	Button Head Machine Screws, 1/4" N.C. x 3/8"
VH-11TP	6	Hex Head Cap Screws, 3/4" N.C. x 2" (9801 thru 9811)
VH-15R	9	Hex Nut, 5/8" N.C.
VA-01E	1	Pipe Plug, 3/4"
VA-14BEE	1	Copper Tube Elbow, 1/4" MPT x 3/8" Tube (C-9828 & Earlier)
VA-771	1	Copper Tube Connection, 1/4" MPT x 3/8" Tube (C-9828 & Earlier)
VH-11TN	6	Hex Head Cap Screw, 3/4" N.C. x 1-3/4" (9812 & Later)
VB-309	1	Oil Seal
VA-207	1	Oil Sight Glass
VB-405	1	"O" Ring No. 114-7507

PISTON-PIN		
PART NO.	NO. REQ'D	DESCRIPTION
CMA661	1	Piston - L.P., Standard
CMA-661-010	1	Piston - L.P., .010 Oversize
CMA-661-030	1	Piston - L.P., .030 Oversize
CM-643	1	Piston Pin - H.P.
CM-644	1	Piston Pin - L.P.
VH-25KH	1	Roll Pin - 3/8" x 1"
CMA-645	1	Piston - H.P., Standard
CMA-645-010	1	Piston - H.P., .010 Oversize
CMA-645-030	1	Piston - H.P., .030 Oversize
CM-687	1	Piston with Rings & Pin - L.P., Standard
CM-687-010	1	Piston with Rings & Pin - L.P., .010 Oversize
CM-687-030	1	Piston with Rings & Pin - L.P., .030 Oversize
CM-688	1	Piston with Rings & Pin - H.P., Standard
CM-688-010	1	Piston with Rings & Pin - H.P., .010 Oversize
CM-688-030	1	Piston with Rings & Pin - H.P., .030 Oversize
CM-689	1	Piston with Rings, Pin, Rod & Bearing - L.P.
CM-690	1	Piston with Rings, Pin, Rod & Bearing - H.P.
VH-1312	1	Cotter, 1/4" x 3" - H.P. Piston Roll Pin - 1/4" x 11/16"

FLYWHEEL & PARTS		
PART NO.	NO. REQ'D	DESCRIPTION
CM-631	1	Flywheel with Blades (9801 thru C-9864)
CM-655	6	Flywheel Blades (9801 thru C-9864)
CMA-632	1	Flywheel (21" 4B) (C-9865 & Later)
CW-3F	1	Flywheel Lockwasher
CX-3F	1	Feather - Flywheel
CX-9BG	1	Flywheel Nut
VH-25H	18	Kantlink Lockwasher, 5/16" (9801 thru C-9864)
VH-11HE	18	Hex Head Cap Screw, 5/16" N.C. x 5/8" (9801 thru C-9864)

CRANKSHAFT ASSEMBLY		
PART NO.	NO. REQ'D	DESCRIPTION
CM-608	1	Crankshaft - For 9801 thru 9806, Furnish (1) CM-608 Crankshaft with Counterweights, (1) CM-679 Oil Ring (No Charge), (1) VD-822 Roller Bearing Cup, & (1) VD-823 Roller Bearing Cone. For 9807, Furnish (1) CM-608 Crankshaft with Counterweights, & (1) CM-679 Oiling Ring (No Charge).
CM-608	1	Crankshaft with Counterweights - (9808 & Later)
CM-609	2	Counterweight - ** Furnish (1) CMA-604 Low Side Counterweight, (1) CMA-605 High Side Counterweight & (4) VH-08-FF Set Screws (9801 thru C-9856)
CMA-604	1	Counterweight, Low Side (C9857 & Later)
CMA-605	1	Counterweight, High Side (C9857 & Later)
CMA-648	4	Counterweight Spacers
VH-08FD	4	Hex Hollow Head C.P. Set Screw, 1/4" N.C. x 1/2" (C-9856 & Earlier)
VD-834	1	Roller Bearing Cone No. 389-A (Blank Side) (9801 thru 9807)
VD-835	1	Roller Bearing Cone No. 3984 (Flywheel Side) (9813 & Earlier), **Furnish (1) R-579 Cup & (1) R-580 Cone
VD-836	1	Roller Bearing Cup No. 3920 (Flywheel Side) (9813 & Earlier), **Furnish (1) R-579 Cup & (1) R-580 Cone
VD-833	1	Roller Bearing Cup No. 382 (Blank Side) (9801 thru 9807)
VD-822	1	Roller Bearing Cup No. 3732 (Blank Side) (9808 & Later)
VD-823	1	Roller Bearing Cone No. 3767 (Blank Side) (9808 & Later)
VD-824	1	Roller Bearing Cone No. 39520 (Flywheel Side) (9814 & Later)
VD-825	1	Roller Bearing Cone No. 39590 (Flywheel Side) (9814 & Later)
VH-08FF	4	Hex Hollow Head C.P. Set Screw 1/4" N.C. x 3/4" (9857 & Later)
VH-1601	4	Hex Head Cap Screws, 5/8" N.F. x 3-1/2"
CMA-657	1	Crankshaft, one-piece, interchangeable

CONNECTING ROD & BEARINGS		
PART NO.	NO. REQ'D	DESCRIPTION
CM-606	4	Connecting Rod Bearing Half (Standard)
CM-666	2	Pin Bushing Kit - L.P. & H.P.
CM-684	1	Connecting Rod with Bushing & Bearing - L.P.
CM-685	1	Connecting Rod with Bushing & Bearing - H.P.
CMA-603	4	Connecting Rod Bolt ** Furnish (1) VH-12NU Screw, (1) VH-15N Nut & (1) VH-35P Lockwasher
CMA-609	4	Connecting Rod Bearing Half (.001 Undersize)
VH-18N	4	Castel Hex Nut **Furnish (1) VH-15N Nut & VH-35P Lockwasher (C-9863 & Earlier)
VH-35P	4	Kantlink Lockwasher, 1/2" (C-9864 & Later)
VH-12NU	4	Hex Head Cap Screw, 1/2" N.F. x 3-1/4" H.T. (C-9864 & Later)
VH-1310	4	Spring Pin, 3/16" x 1/2" Lg. - L.P. & H.P. (C-9868 & Later)
VH-15N	4	Hex Nut, 1/2" N.F. (C-9864 & Later)

RINGS		
PART NO.	NO. REQ'D	DESCRIPTION
CMA-630	1	Piston Ring Set - L.P., Standard
CMA-630-010	1	Piston Ring Set - L.P., .010 Oversize
CMA-630-030	1	Piston Ring Set - L.P., .030 Oversize
CMA-631	1	Piston Ring Set - H.P., Standard
CMA-631-010	1	Piston Ring Set - H.P., .010 Oversize
CMA-631-030	1	Piston Ring Set - H.P., .030 Oversize

# PARTS LIST

## CURTIS AIR COMPRESSOR

### MODEL C-98 TWO STAGE

CYLINDER HEAD ASSEMBLY		
PART NO.	NO. REQ'D	DESCRIPTION
CA-299-46	10	Suction Valve Spring - H.P. & L.P. (Also used for Discharge Valve Spring - H.P. & L.P. (9808 thru C-9869)
CA-299-47	10	Discharge Valve Spring - H.P. & L.P. (9801 thru 9807)
CM-623	1	Suction Valve Cover Plate - L.P.
CM-624	1	Suction Valve Cover Plate - H.P.
CM-625	1	Discharge Valve Cover Plate - L.P.
CM-626	1	Discharge Valve Cover Plate - H.P.
CM-627	1	Spacer - L.P.
CM-628	1	Spacer - H.P.
CM-633	1	Discharge Valve Backstop Kit - L.P. (9801 thru C-9869)
CM-636	1	Suction Valve Seat - L.P.
CM-638	1	Suction Valve Seat - H.P.
CM-640	2	Valve Discs - L.P.
CM-641	4	Valve Discs - L.P. & H.P.
CM-642	2	Stud **Furnish CM-699 For L.P. Suction or, Furnish CMA-600 for H.P. Suction
CM-656	2	Valve Cover Plate Gasket - H.P.
CM-657	2	Valve Cover Plate Gasket - L.P.
CM-668	1	Discharge Valve Backstop Kit - H.P. (9801 thru C-9869)
CM-671	2	Stud **Furnish CM-697 for L.P. Discharge or Furnish CM-698 for H.P. Discharge
CM-678	1	Cylinder Head (9801 thru C-9855)
CM-692	1	Cylinder Head Assembly for Vacuum Unloader Service, (9801 thru C-9855 except 9813)
CM-693	1	Cylinder Head Assembly for Air Pressure Unloader Service (9801 thru C-9855 except 9813)
CM-697	1	Discharge Valve Seat with Stud - L.P.
CM-698	1	Discharge Valve Seat with Stud - H.P.
CM-699	1	Suction Valve Backstop with Stud - L.P.
CM-761	1	Suction Valve Assembly - L.P.
CM-762	1	Discharge Valve Assembly - L.P.
CMA-600	1	Suction Valve Backstop with Stud - H.P.
CMA-607	1	Suction Valve Assembly - H.P.
CMA-608	1	Discharge Valve Assembly - H.P.
CMA-611	1	Cylinder Head Assembly for Air Pressure Unloader Service, (C-9856 & Later)
CMA-613	1	Cylinder Head (C-9856 & Later)
CMA-642	1	Discharge Valve Backstop - L.P. (C-9870 & Later)
CMA-644	1	Discharge Valve Backstop - H.P. (C-9870 & Later)
CMA-646	20	Valve Spring Button - L.P. & H.P. (C-9870 & Later)
CMA-647	10	Discharge Valve Spring - L.P. & H.P. (C-9870 & Later)
VH-23CF	4	Cotter, 3/32" x 3/4" (9815 & Later)
VA-20L	4	Self Locking Nut, 7/16" N.F. (9813 & 9814)
RK-206-3	14	Stud Nuts - H.P. & L.P. Valve Cover
RL-8-9-G	4	Stud Nuts - H.P. & L.P. (9801 thru 9812)
VH-1225	14	Solid Copper Washer, 25/64" x 9/16" x .051 (9813 & Later)
VH-1402	3	Hex Hollow Head Flat Point Set Screw, 3/8" N.C. x 1 3/4"
VH-1403	11	Hex Hollow Head Flat Point Set Screw, 3/8" N.C. x 2"
VRD-238	14	Solid Copper Washer, 29/64" x 5/8" x 1/32" (9801 thru 9812)
VH-18L	4	Castel Hex Nut, 7/16" N.F. (9815 & Later)
VH-11PM	14	Hex Head Cap Screw, 1/2" N.C. x 1 1/2"
VH-32K	1	Flat Washer, 3/8"
VB-916	2	Copper Gasket O.D. 3.223x.I.D.-3.039 x THK .025
CMA-669	2	Copper Gasket O.D. 5.07 x I.D. 4.843 x THK .032

INTERCOOLER ASSEMBLY		
PART NO.	NO. REQ'D	DESCRIPTION
CM-602	1	Intercooler Outlet Manifold
CM-603	1	Intercooler Inlet Manifold
CM-614	1	Pipe Nipple, 2" x 8 7/8"
CM-650-A	1	Intercooler Tube (9801 thru C-9864)
CM-650-B	1	Intercooler Tube (9801 thru C-9864)
CM-650-C	1	Intercooler Tube (9801 thru C-9864)
CM-650-D	1	Intercooler Tube (9801 thru C-9864)
CM-651	1	Manifold Connection
CM-653	1	Intercooler Strap (C-9864 & Earlier)
CM-654	1	Intercooler Clamp Strap (C-9864 & Earlier)
CM-658	1	Intercooler Spacer (C-9864 & Earlier)
CM-659	2	Intercooler Manifold Gasket
CMA-633-A	2	Outer Intercooler Tube (C-9865 & Later)
CMA-633B	2	Inner Intercooler Tube (C-9865 & Later)
CMA-634	1	Intercooler Top Clamp (C-9865 & Later)
CMA-635	1	Intercooler Spacer (C-9865 & Later)
CMA-636	1	Intercooler Bottom Clamp (C-9865 & Later)
VV-405	2	Intercooler Pop Valve
CR-2266	8	Compression Nut, 1"
CR-2265	8	Compression Sleeve, 1"
VH-11HZ	1	Hex Head Cap Screw, 5/16" N.C. x 5"
VH-11KK	1	Hex Head Cap Screw, 3/8" N.C. x 1 1/4"
VH-35K	1	Kantlink Lockwasher, 3/8"
VH-15H	1	Hex Nut, 5/16" N.C.
VA-12DBA	2	Pipe Bushing, 1/2" x 1/4"
VH-22G	1	Hex Nut, 5/16" N.C. Flexloc
VH-1224	2	Solid Copper Washer, 41/64" x 61/64" x .051
VH-1661	2	Hex Head Cap Screws, 5/8" N.C. x 6 1/2"
VA-01DA	1	Pipe Plug, 1/2" (9820 & Earlier)
VRD-298	2	Copper Asbestos Gasket

}

USE  
CMA-600  
KIT

AIR PRESSURE UNLOADER ASSEMBLY		
PART NO.	NO. REQ'D	DESCRIPTION
CA-299-48	2	Unloader Fork Springs
CB-1-BA	1	Head Unloader Tubing
CBA979	2	Unloader Diaphragm Assembly - 40 lb.
CB-967	2	Lower Cylinder Springs
CB-975	2	Unloader Diaphragm Bodies
CB-976	2	Unloader Diaphragm Caps
CB-979	2	Grooved Unloader Pins
CB-986	2	Unloader Diaphragm Piston Assembly - 40 lb.
CBB-916	1	Unloader Fork with Stems & Pins - H.P.
CBB-917	1	Unloader Fork with Stems & Pins - L.P.
CD-1266	1	Unloader Hole Plug
CP-616-7	2	Unloader Diaphragm
VH-03CF	16	Filister Head Machine Screw, 10-32 x 3/4"
VA-15BCE	1	Copper Tube Elbow, 1/4" MPT x 1/4" Tube
VA-765	1	Ball Solderless Tee, 1/4" MPT x 1/4" FPT x 1/4" Tube
VB-406	1	O-Ring, No. 010-17107A

**PANZITTA SALES & SERVICE**  
**72 George Avenue**  
**Wilkes-Barre, PA 18705**  
**570-822-6720 800-822-6720**  
**www.panzittasales.com**