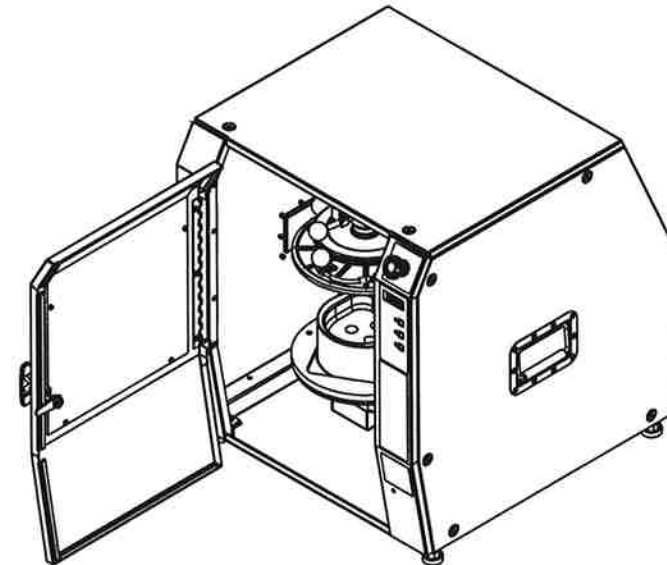


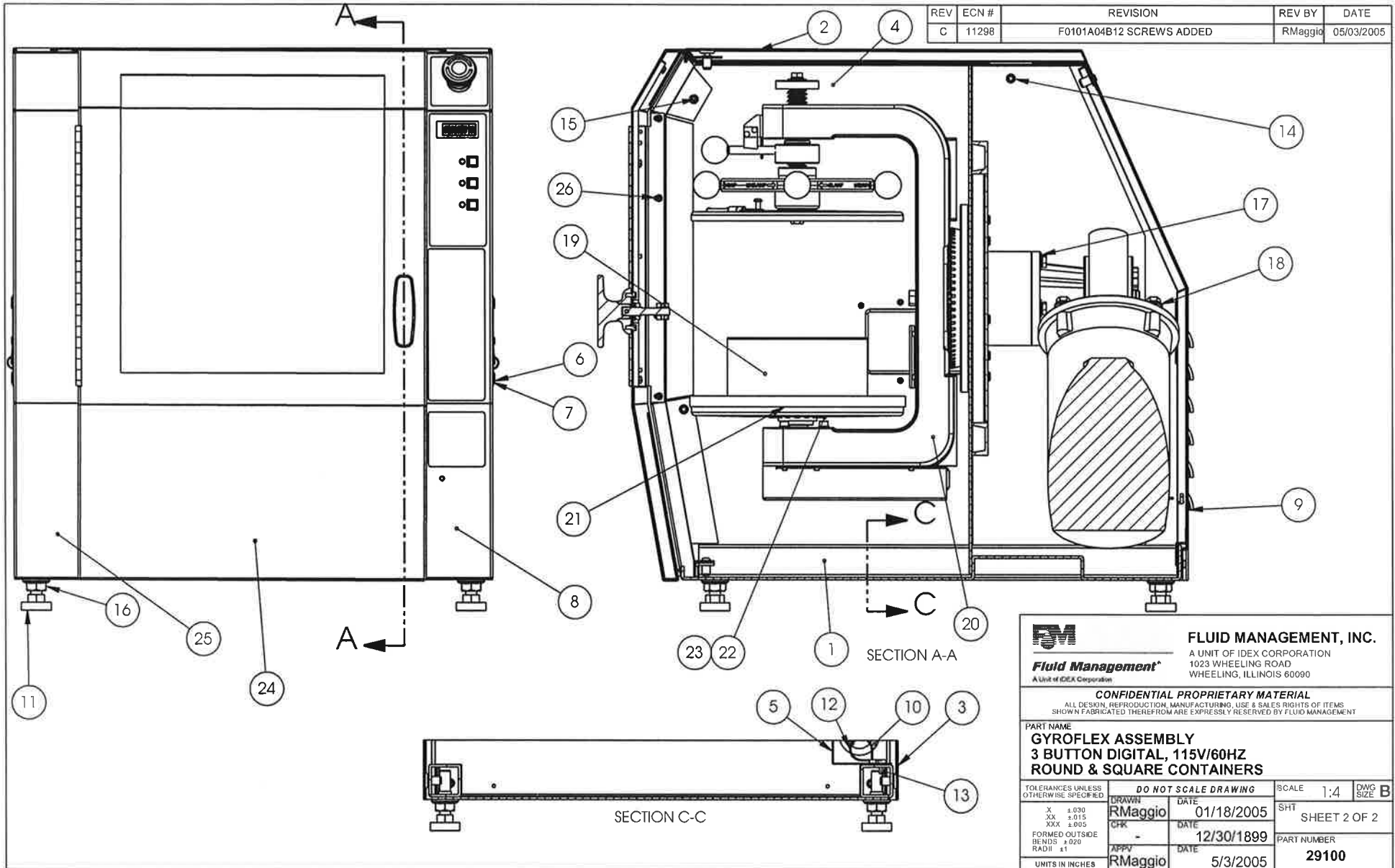
Item	PART#	Qty	PROD CAT	DESCRIPTION
1	29110	1	WELDMNT	DECK ASSEMBLY
2	29121	1	PANEL	TOP, GYROFLEX
3	29124	1	PANEL	SIDE, RIGHT
4	29123	1	PANEL	SIDE, LEFT
5	29135	1	PANEL	CORD COVER, GYROFLEX
6	29138	20	RIVET	3/16" DIA. DOME, STEEL, BLACK ZINC
7	29139	2	HANDLE	SIDE PANEL, BLACK, GYROFLEX
8	29140	1	ASSEMBLY	DIGITAL ELECTRONICS PANEL, GYROFLEX
9	29468	1	WELDMNT	REAR PANEL, GYROFLEX
10	01328	1	GROMMET	RUBBER, 1.25" ID
11	02410	4	FOOT	LEVELER WITH PAD
12	4000097	2	WRAP	TIE WRAP, W/ HOLE, LARGE
13	F0043041	2	NUT	RIVET, KNURLED, M4 X 2.0 GRIP, ZINC PLATED
14	F0043061	18	NUT	RIVET, KNURL, M6x4.2, ZN, PLT
15	F0101A06B16	18	SCREW	BHCS, M6x1.0x16mm, LOCKING
16	F01078	4	NUT	NUT, HEX, 1/2-13, FLANGE
17	27640	1	ASSEMBLY	ASSEMBLY, FLANGE
18	27639	1	ASSEMBLY	ASSEMBLY, DRIVE
19	29488	1	QUART ADAPTER	"D", SQUARE & ROUND CONTAINERS
20	27641	1	ASSEMBLY	YOKE
21	29083	1	ADAPTER	SQUARE & ROUND CONTAINERS
22	01105	2	SCREW	SHCS, 1/4-20X5/8, C/Z
23	27872	2	INSERT	1/4-20 THREAD INSERT
24	29130	1	ASSEMBLY	DOOR, GYROFLEX
25	29125	1	PANEL	FRONT, LEFT, GYROFLEX
26	F0101A04B12	4	SCREW	BHCS, M4x0.7 X 12mm, LOCKING

REV	ECN #	REVISION	REV BY	DATE
C	11298	F0101A04B12 SCREWS ADDED	RMaggio	05/03/2005



NOTE:
 WIRING SCHEMATIC, 30064, FOR 110V, 60HZ
 WITH ELECTRONIC TIMER INCLUDED IN BOM
 BUT NOT SHOWN ON THESE ASSEMBLY
 DRAWINGS.

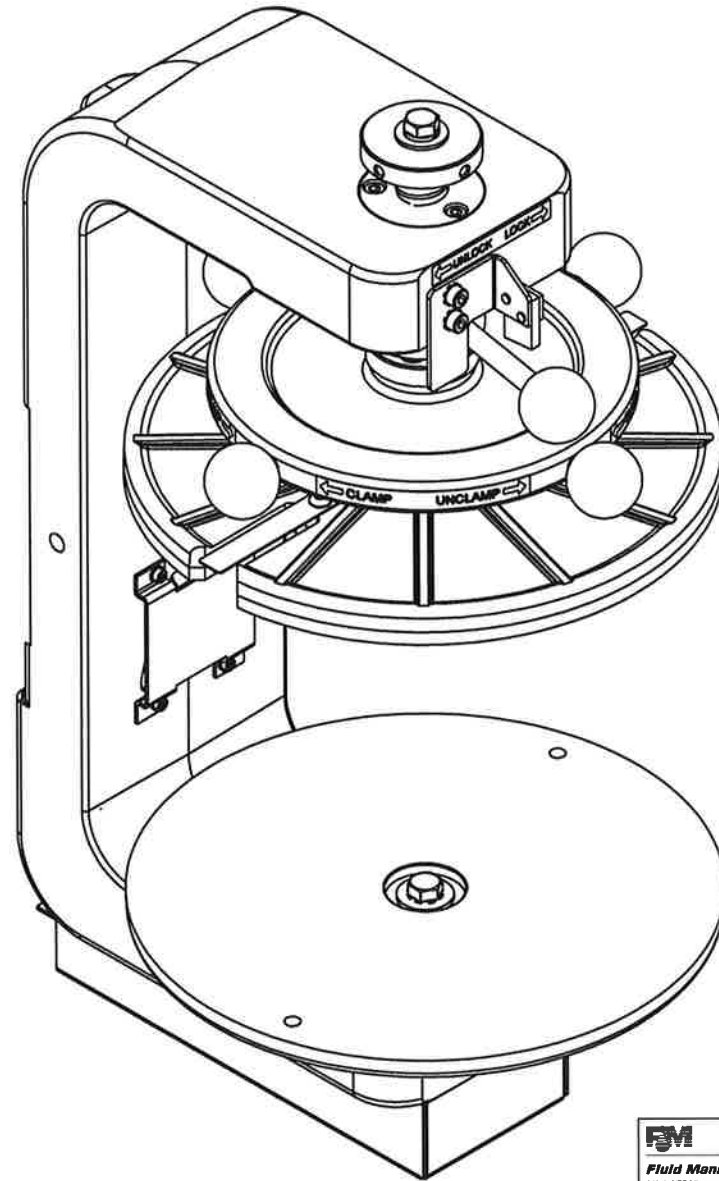
		FLUID MANAGEMENT, INC. A UNIT OF IDEX CORPORATION 1023 WHEELING ROAD WHEELING, ILLINOIS 60090	
<small>CONFIDENTIAL PROPRIETARY MATERIAL</small> <small>ALL DESIGN, REPRODUCTION, MANUFACTURING, USE & SALES RIGHTS OF ITEMS SHOWN FABRICATED THEREFROM ARE EXPRESSLY RESERVED BY FLUID MANAGEMENT</small>			
PART NAME GYROFLEX ASSEMBLY 3 BUTTON DIGITAL, 115V/60HZ ROUND & SQUARE CONTAINERS			
<small>TOLERANCES UNLESS OTHERWISE SPECIFIED</small> X ±.030 XX ±.015 XXX ±.005 FORMED OUTSIDE BEINGS ±.020 RADII ±.1	DO NOT SCALE DRAWING DRAWN DATE RMaggio 01/18/2005 CHK DATE - 12/30/1899 APPV DATE RMaggio 5/3/2005		SCALE 1:8 DWG SIZE B SHIT SHEET 1 OF 2 PART NUMBER 29100
<small>UNITS IN INCHES</small>			




 Fluid Management <small>A Unit of IDEC Corporation</small>	FLUID MANAGEMENT, INC. A UNIT OF IDEC CORPORATION 1023 WHEELING ROAD WHEELING, ILLINOIS 60090		
	CONFIDENTIAL PROPRIETARY MATERIAL <small>ALL DESIGN, REPRODUCTION, MANUFACTURING, USE & SALES RIGHTS OF ITEMS SHOWN FABRICATED THEREFROM ARE EXPRESSLY RESERVED BY FLUID MANAGEMENT</small>		
PART NAME GYROFLEX ASSEMBLY 3 BUTTON DIGITAL, 115V/60HZ ROUND & SQUARE CONTAINERS			
<small>TOLERANCES UNLESS OTHERWISE SPECIFIED</small>	DO NOT SCALE DRAWING		<small>SCALE</small> 1:4 <small>DWG SIZE</small> B
<small>X ±.030</small> <small>XX ±.015</small> <small>XXX ±.005</small>	<small>DRAWN</small> RMaggio	<small>DATE</small> 01/18/2005	<small>SHT</small> SHEET 2 OF 2
<small>FORMED OUTSIDE</small> <small>BENDS ±.020</small> <small>RADI ±1</small>	<small>CHK</small> -	<small>DATE</small> 12/30/1899	<small>PART NUMBER</small> 29100
<small>UNITS IN INCHES</small>	<small>APPV</small> RMaggio	<small>DATE</small> 5/3/2005	

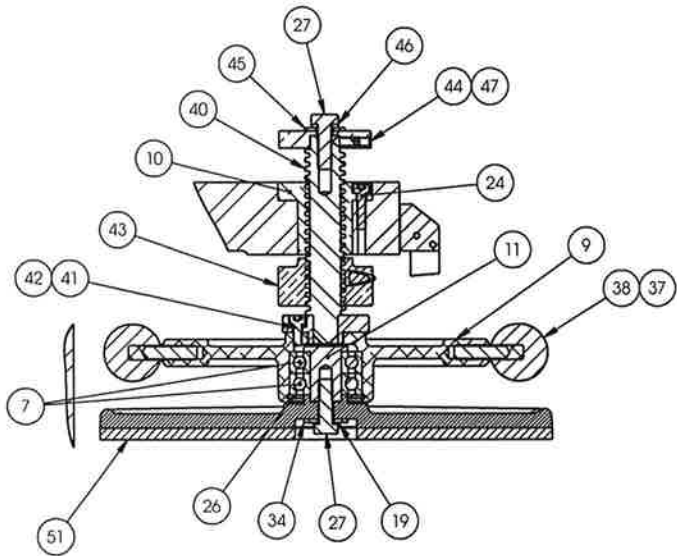
Item	PART NO.	Qty	PROD CAT	DESCRIPTION
1	27560	1	MACHINING	YOKE, CAN SUPPORT
2	27570	1	PULLEY	PULLEY, TOOTHED, LARGE
3	27569	1	PULLEY	PULLEY, TOOTHED, SMALL
4	27583	1	SHAFT	SHAFT, TRANSMISSION
5	27586	1	SPACER	SPACER, TRANS SHAFT
6	32901	1	HOUSING	SUPPORT BEARING
7	27568	4	BEARING	BEARING, BALL - RS17-40-12
8	27584	1	SHAFT	SHAFT, LOWER PLATE
9	27559	1	MACHINING	HAND WHEEL
10	27572	1	NUT, BRASS	MOG-0085
11	27585	1	SHAFT	SHAFT, UPPER PLATE
12	27674	4	WASHER	WASHER, LOCK, 5.3
13	27589	1	SPACER	SPACER
14	27626	2	WASHER	WASHER, SECONDARY SHAFT
15	27666	3	WASHER	WASHER, 6.4 X 12.5
16	30805	3	SCREW	M6 x 1 x 20mm SHCS W/PATCH
17	27667	1	KEY	KEY, PARALLEL, 5X5X16
18	27664	3	KEY	KEY, PARALLEL, 5X5X22
19	27660	3	WASHER	WASHER, TOOTH, LOCK, M8
20	30809	2	SCREW	M8 x 1.25 x 16mm HHCS W/PATCH
21	27566	1	BEARING	BEARING, BALL, D15-35-15.9
22	27567	1	BEARING	BEARING, BALL, D15-35-11
23	27663	1	RING	RING, RETAINING, 35
24	30810	4	SCREW	M5 x .8 x 20mm SHCS W/PATCH
25	30806	1	SET SCREW	M6 x 1 x 8mm FLAT TIP
26	27671	1	RING	RING, RETAINING, 40
27	30821	2	SCREW	M8 x 1.25 x 25mm HHCS W/PATCH
28	27620	1	COVER	COVER, GEAR, LOWER
29	27621	1	COVER	COVER, GEAR, CENTER
30	30807	10	SCREW	M3 x .5 x 6mm SHCS W/PATCH
31	27678	10	WASHER	WASHER, M3
32	27571	1	BELT	BELT, TOOTHED
33	32068	1	SCREW	M5 x .8 x 20mm HHCS W/PATCH
34	27661	3	WASHER	WASHER, 9X24
35	28562	1	ASSEMBLY	DETENT
36	1850148	2	SCREW	SCREW, M5X16, SOCKET
37	28615	4	STUD	THREADED
38	4000008	5	KNOB	BLK # 25, 5/16-24, THD
39	28494	1	SHAFT	GYROFLEX
40	28738	1	ASSEMBLY	WELD
41	30808	3	SCREW	M5 x .8 x 12 SHCS W/PATCH
42	28739	3	WASHER	M5, HIGH-COLLAR
43	28485	1	NUT	LOCKING
44	29574	1	SPACER	SPACER
45	4000179	1	WASHER	PLAIN, 5/16
46	01109	1	WASHER	LOCK, 5/16, SPLIT, C/Z
47	32066	2	SET SCREW	M5 x .8 x 12mm CONE TIP
48	29537	4	LABEL	CLAMP/UNCLAMP
49	29538	1	LABEL	UNLOCK/LOCK
50	27561	1	MACHINING	LOWER SUPPORT PLATE
51	30280	1	ASSEMBLY	UPPER SUPPORT PLATE

REV	ECN #	REVISION	REV BY	DATE
G	21480	REMOVE 27576 FROM BOM	AObrecht	6/15/2009

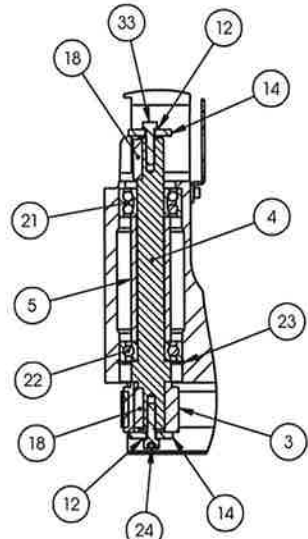


 Fluid Management <small>A Unit of IDEX Corporation</small>		FLUID MANAGEMENT, INC. <small>A UNIT OF IDEX CORPORATION</small> 1023 WHEELING ROAD WHEELING, ILLINOIS 60090	
<small>CONFIDENTIAL PROPRIETARY MATERIAL ALL DESIGN, REPRODUCTION, MANUFACTURING, USE & SALES RIGHTS OF ITEMS SHOWN FABRICATED THEREFROM ARE EXPRESSLY RESERVED BY FLUID MANAGEMENT</small>			
ASSEMBLY YOKE GYROFLEX			
<small>TOLERANCES UNLESS OTHERWISE SPECIFIED</small>		<small>DO NOT SCALE DRAWING</small>	
X .000 XX .015 XXX .003	FORMED OUTSIDE SERIES 1, 100 TRAD. 31	DATE 12/6/2004 DATE 1/1/1900 DATE 6/15/2009	SCALE 1:1.5 SHEET 1 OF 2 PART NUMBER 27641
<small>UNITS OF MEASURE</small>		<small>APPROVED</small>	

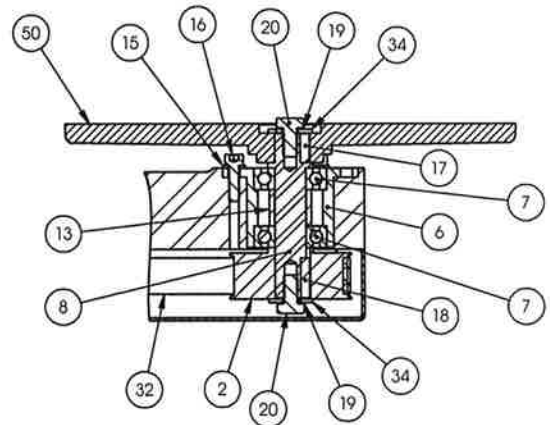
REV	ECN #	REVISION	REV BY	DATE
G	21490	REMOVE 27576 FROM BOM	AObrecht	6/15/2009



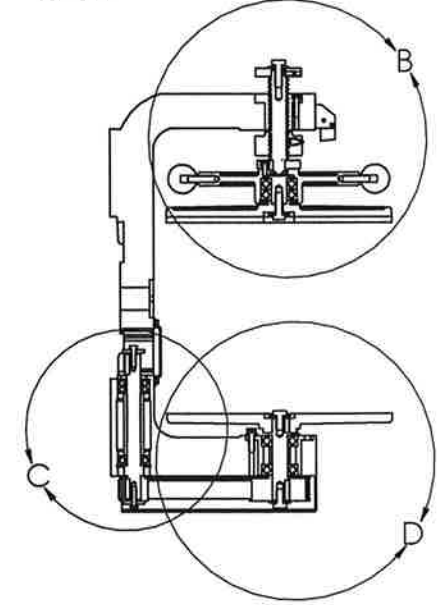
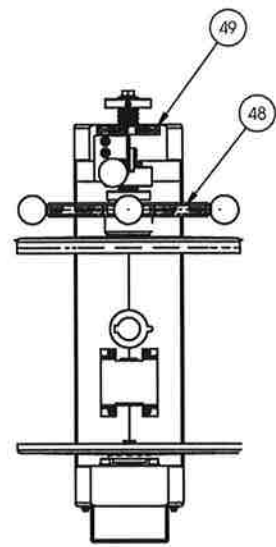
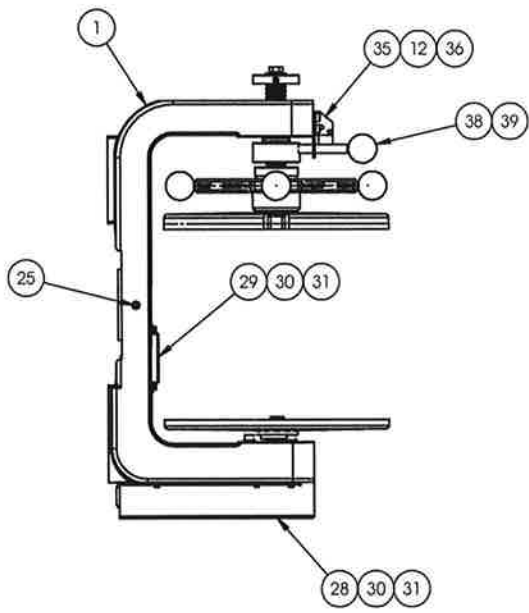
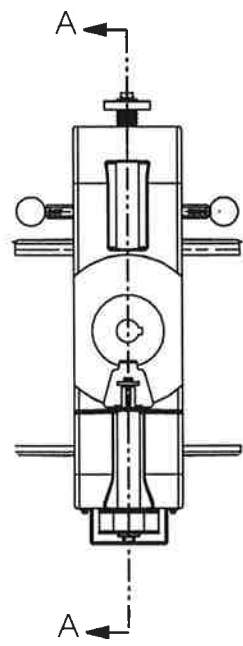
DETAIL B
SCALE 1 : 2



DETAIL C
SCALE 1 : 2



DETAIL D
SCALE 1 : 2



SECTION A-A

		FLUID MANAGEMENT, INC. A UNIT OF IDEX CORPORATION 1023 WHEELING ROAD WHEELING, ILLINOIS 60090	
<small>CONFIDENTIAL PROPRIETARY MATERIAL ALL DESIGN, REPRODUCTION, MANUFACTURING, USE & SALES RIGHTS OF ITEMS SHOWN FABRICATED THEREFROM ARE EXPRESSLY RESERVED BY FLUID MANAGEMENT</small>			
PART NAME: ASSEMBLY YOKE GYROFLEX		SCALE: 1:4 QUOTED: C	
TOLERANCES UNLESS OTHERWISE SPECIFIED: .0008 .0015 .0030 .0050 .0100 .0150 .0300 .0500 .1000 .1500 .3000 .5000 .7500 1.0000 1.5000 3.0000 5.0000 7.5000 10.0000		DO NOT SCALE DRAWING DATE: 12/6/2004 SHEET: 2 OF 2	
# 800 888 8888 FAX 800 888 8888 PHONE @ OUTSIDE 815 424 4000 FAX 815 424 4000		DATE: 1/1/1900 PART NUMBER: 27641	
UNITS IN INCHES AObrecht		DATE: 6/15/2009	