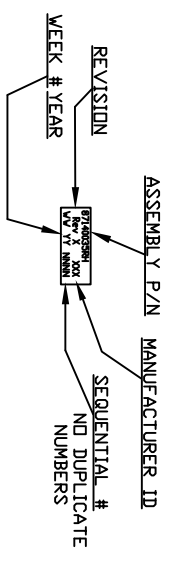
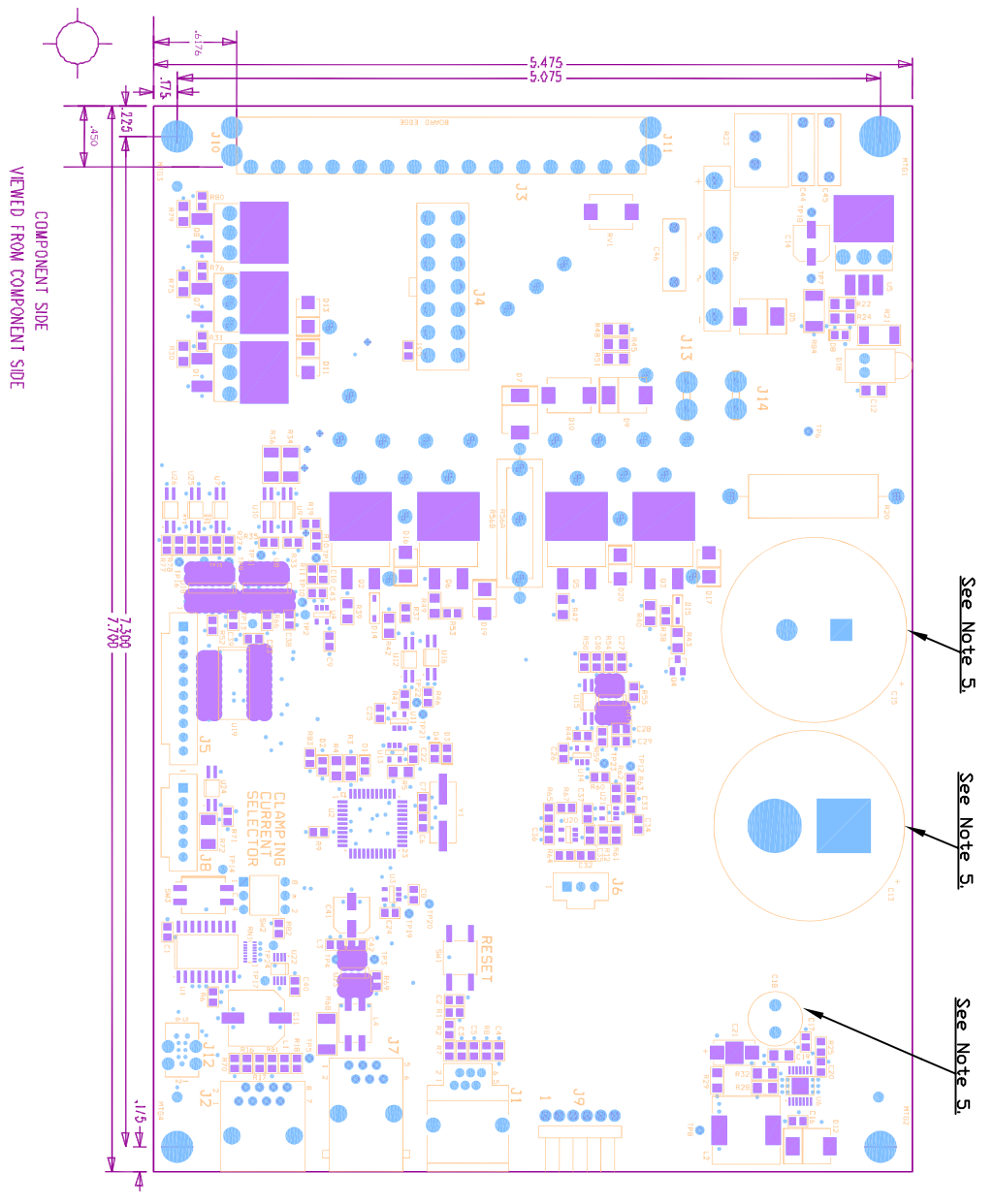


REV EGN #	REVISION	REV BY	DATE
D 22498	Revise BDM	Melder	1/24/2013



ITEM PART NO. DTY.	DESCRIPTION			
	<b>FLUID MANAGEMENT</b> <b>CONFIDENTIAL PROPRIETARY MATERIAL</b> <small>ALL DESIGN, REPRODUCTION, MANUFACTURING, USE &amp; SALES RIGHTS OF ITEMS SHOWN FABRICATED THEREFROM ARE EXPRESSLY RESERVED BY FLUID MANAGEMENT</small> <b>FLUID MANAGEMENT</b> A Unit of IDEX Corporation 1023 Wheeling Road Wheeling, Illinois 60090 <small>© 2013 IDEX CORPORATION</small>			
PART NAME	ASSEMBLY	PCB, Mixer Board, Adjustable Pressure		
TOLERANCES UNLESS OTHERWISE SPECIFIED	DESIGN	DATE	SCALE:	DWG SIZE
X ±.030	DRAWN	DATE	SHT 1 of 1	C
.XXX ±.005	CHK	DATE	DO NOT SCALE DRAWINGS	
FORMED OUTSIDE	APRV	DATE	PART NUMBER	
BENDS ±.020			87140035RH	
ROUND ±.1				

- Notes:
1. Finished end product is to be RoHS compliant at time of Manufacture
  2. Tracable RoHS certification documentation to be supplied with all delivered product;
  3. Revision printed on label is the same as the revision of this document;
  4. Place label on component side of board.
  5. Place Electronics grade (non-corrosive) RTV adhesive on C13 or C15, and C18, between bottom surface of part and PCB.