



IMPORTANT SAFETY INSTRUCTIONS SAVE THESE INSTRUCTIONS

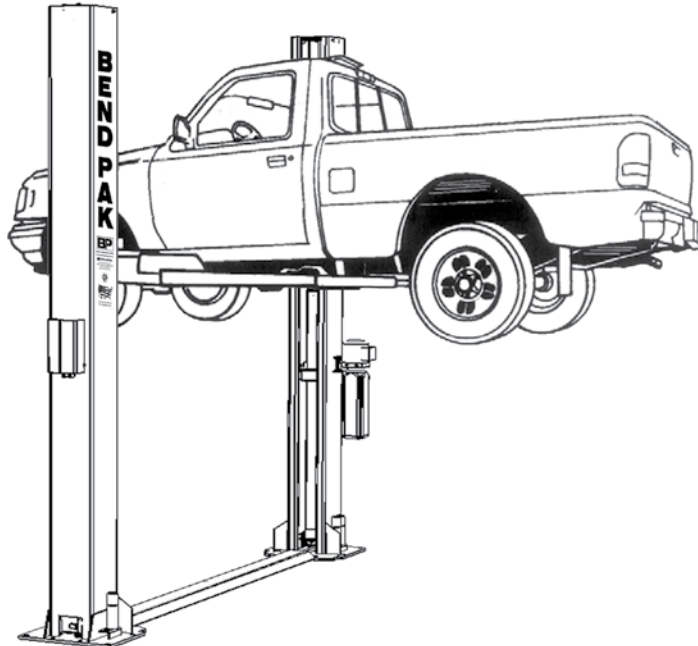
PLEASE READ THE ENTIRE CONTENTS OF THIS MANUAL PRIOR TO INSTALLATION AND OPERATION. BY PROCEEDING WITH LIFT INSTALLATION AND OPERATION YOU AGREE THAT YOU FULLY UNDERSTAND AND COMPREHEND THE FULL CONTENTS OF THIS DOCUMENT. FORWARD THIS MANUAL TO ALL OPERATORS. FAILURE TO OPERATE THIS EQUIPMENT AS DIRECTED MAY CAUSE INJURY OR DEATH.

Manual Revision A4 - March 2020
Manual Part Number 5900952

INSTALLATION AND OPERATION MANUAL

12,000 POUND CAPACITY SURFACE MOUNTED TWO-POST LIFTS

MODEL:
XPR-12FDL



READ FIRST



Do not operate this machine until you read and understand all the dangers, warnings and cautions in this manual.

RECEIVING

The shipment should be thoroughly inspected as soon as it is received. The signed Bill of Lading is acknowledgement by the shipping carrier as receipt of this product as listed in your invoice as being in a good condition of shipment. If any of these goods listed on this Bill of Lading are missing or damaged, do not accept goods until the shipping carrier makes a notation on the freight bill of the missing or damaged goods. Do this for your own protection.

BE SAFE

Your new lift was designed and built with safety in mind. However, your overall safety can be increased with proper training and thoughtful operation on the part of the operator. DO NOT operate or repair this equipment without reading this manual and the important safety instructions shown inside. Keep this operation manual near the lift at all times. Make sure that ALL USERS read and understand this manual.



1645 Lemonwood Dr.
Santa Paula, CA. 93060, USA
Toll Free 1-800-253-2363
Tel: 1-805-933-9970
www.bendpak.com

12,000 POUND CAPACITY SURFACE MOUNTED TWO-POST LIFTS

This instruction manual has been prepared especially for you. Your new lift is the product of over 40 years of continuous research, testing and development; it is the most technically advanced lift on the market today.

READ THIS ENTIRE MANUAL BEFORE INSTALLATION & OPERATION BEGINS.

RECORD HERE THE LIFT AND
POWER UNIT INFORMATION WHICH IS LOCATED
ON THE SERIAL NUMBER
DATA PLATES ON THE LIFT AND
ON THE POWER UNIT

Power Unit Model # _____
Power Unit Date Of Mfg. _____
Power Unit Serial # _____

This information is required when
calling for parts or warranty issues.

BP BendPak Santa Paula, CA USA www.bendpak.com	
MODEL NUMBER	
SERIAL NUMBER	
LIFT CAPACITY	DESCRIPTION
VOLTAGE	
<input type="checkbox"/> 110-240VAC, 50-60 Hz, 1 Ph	<input type="checkbox"/> 380-415VAC, 50-60 Hz, 3 Ph
<input type="checkbox"/> 208-240VAC, 50-60 Hz, 1 Ph	<input type="checkbox"/> 208-440VAC, 50-60 Hz, 3 Ph
DATE OF MFG.	
DANGER! Disconnect Power Before Servicing WARRANTY VOID IF DATA PLATE IS REMOVED PN 5905950	
CE EAC	

PRODUCT WARRANTY

Our comprehensive product warranty means more than a commitment to you; it's also a commitment to the value of your new BendPak lift. For full warranty details and to register your new lift contact your nearest BendPak dealer or visit:

<http://www.bendpak.com/support/warranty/>

NOTE:

Every effort has been taken to ensure complete and accurate instructions have been included in this manual, however, possible product updates, revisions and or changes may have occurred since this printing. BendPak Ranger reserves the right to change specifications without incurring any obligation for equipment previously or subsequently sold.

Not responsible for typographical errors.

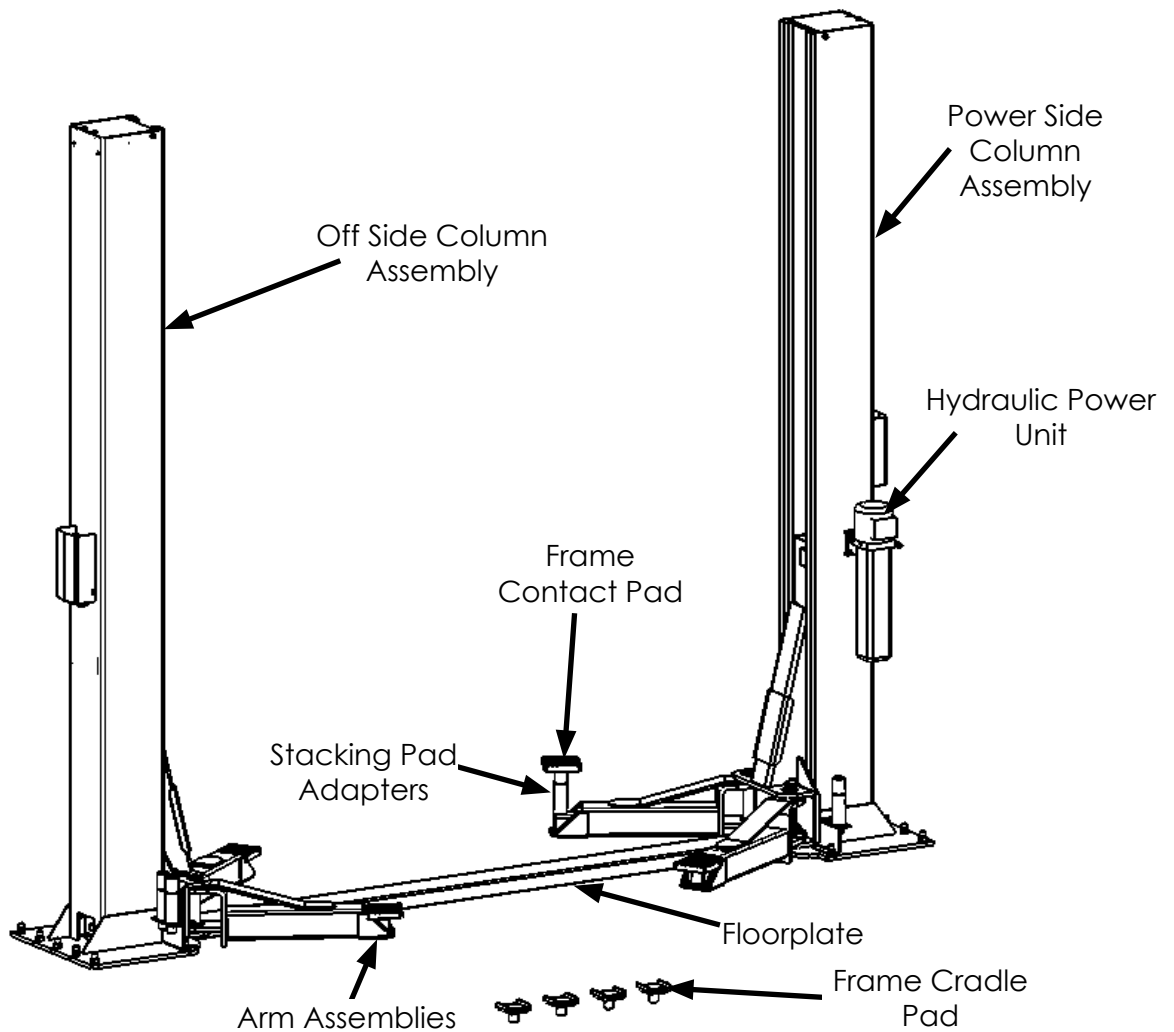


When removing the lift from shipping angles, pay close attention as the posts can slide and can cause injury. Prior to removing the bolts make sure the posts are held securely by a fork lift or some other heavy lifting device.

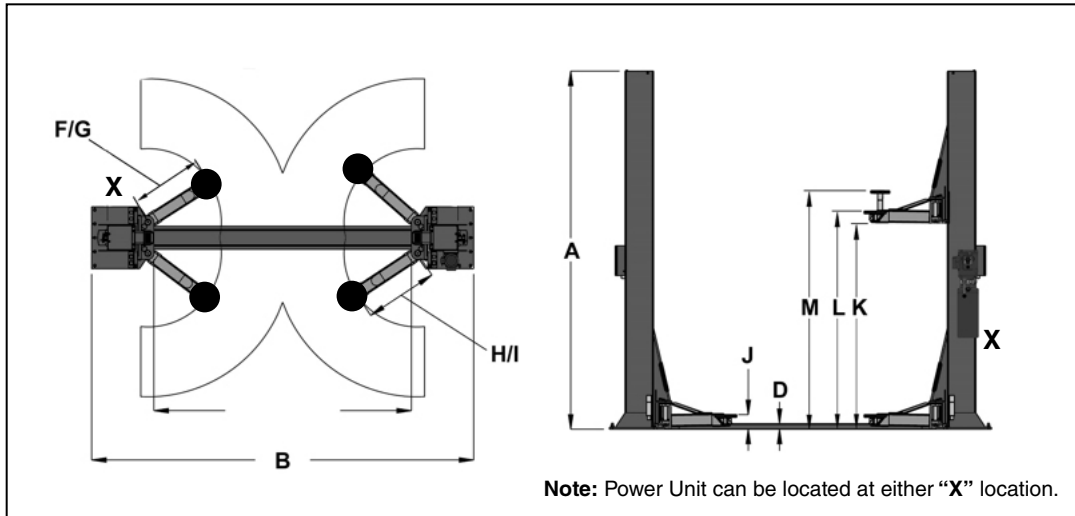
PARTS INVENTORY

Be sure to take a complete inventory of parts prior to beginning installation.

Description	Qty
Floorplate	1
Arm Assemblies	4
Rear Arm Assembly	2
Frame Contact Pads	4
Frame Cradle Pads	4
Off Side Column with Carriage Assembly	1
Power Side Column with Carriage Assembly	1
Hydraulic Cylinder	2
Parts Box (Packing List Enclosed)	1
Parts Bag (Packaged in Part Box)	1
Hydraulic Power Unit	1



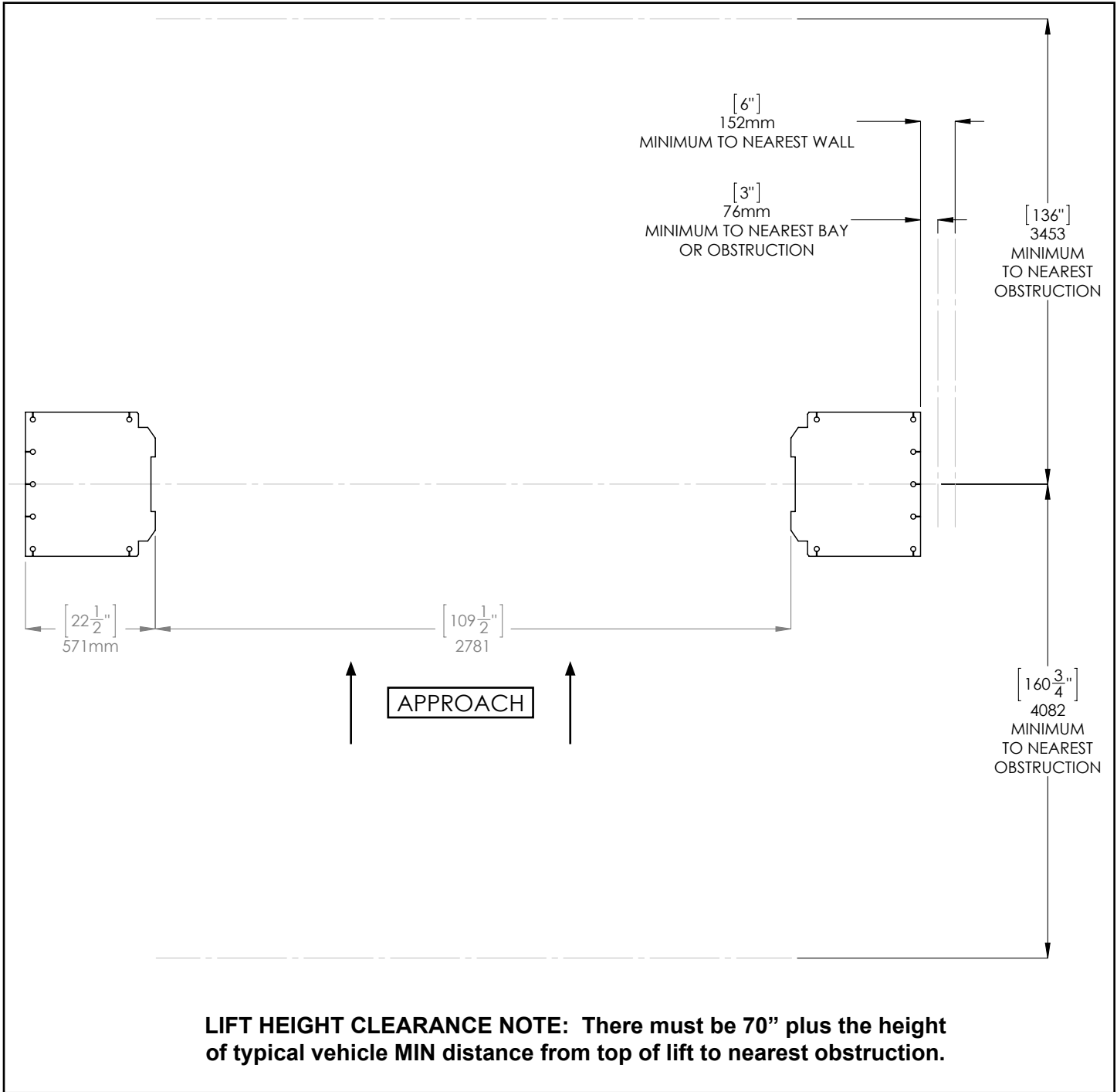
FLOOR PLAN






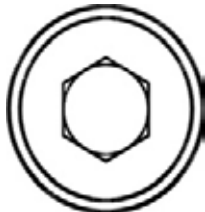
MODEL	XPR-12FDL
Lifting Capacity	12,000Lbs. / 5443Kg.
*Max Capacity/ Front Axle	6,000Lbs. / 2722Kg.
*Max Capacity/ Rear Axle	6,000Lbs. / 2722Kg.
A- Height Overall:	144" / 3403mm.
B -Width Overall (Outside of Base Plate)	155" / 3937mm.
D- Cover Height	2" / 51mm.
F -Reach (Front Arm Min.):	39" / 991mm.
G -Reach (Front Arm Max.):	59" / 1499mm.
H- Reach (Rear Arm Min.):	39" / 991mm.
I- Reach (Rear Arm Max.):	59" / 1499mm.
J- Min. Pad Height:	5" / 127mm.
K- Rise:	69" / 1753mm.
L -Max Lift Height (Pad Only):	74"/1880mm
M - Max Lift Height (6" Adapter):	80" /2032mm
Motor(**)	220VAC / 60Hz.1Ph.
Time of Full Rise:	55 Seconds
Emission sound pressure at Operator Position < 70 dB(A)	
* Special Voltages Available Upon Request.	
The design, material and specifications are subject to change without notice.	

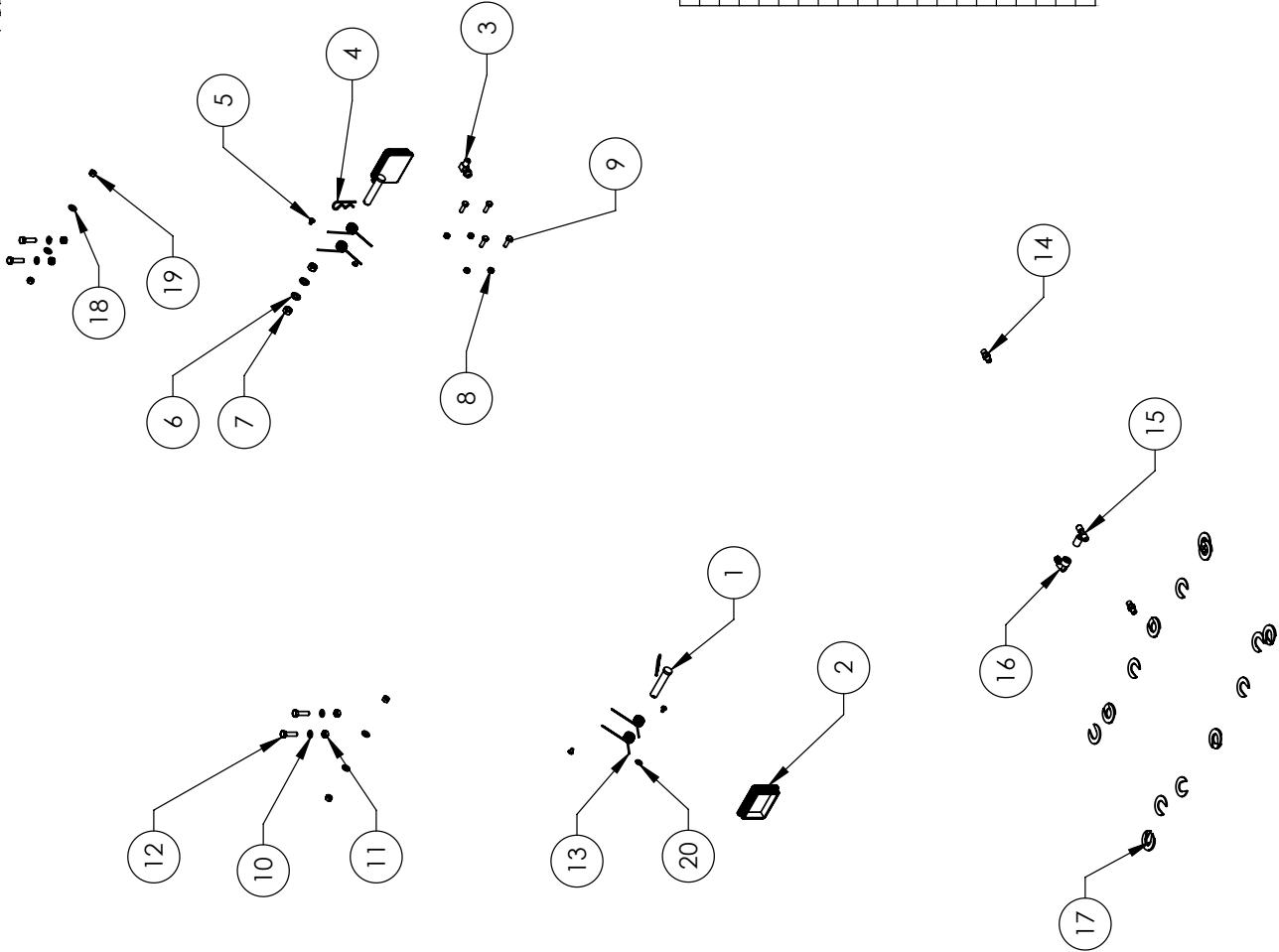
CLEARANCES

XPR-12FDL



Torque Recommendations

VALUES ARE STATED IN FOOT POUNDS (ft-lb)					
					
		SAE 0-1-2	SAE Grade 5	SAE Grade 8	SOCKET HEAD CAP SCREW
		CLASS 4.8	CLASS 8.8	CLASS 10.9	CLASS 12.9
Bolt Size (SAE)	Bolt Size (Metric)				
1/4-20	M6 x 1.0	6	10	14	13
5/16-18	M8 x 1.25	12	19	29	31.4
3/8-16	M10 x 1.50	20	33	47	62
7/16-14		32	54	78	
1/2-13	M12 x 1.75	47	78	119	108
9/16-12	M14 x 2.00	69	114	169	173
5/8-11	M16 x 2.00	96	154	230	269
3/4-10	M18 x 2.50	155	257	380	372
7/8-9	M22 x 2.50	206	382	600	716
3/4 Anchor Bolts		75 MIN 110 MAX			



ITEM NO	PART NUMBER	DESCRIPTION	QTY	REV
1	5505001	GP-7/PL-6000/XPR SERIES SAFETY CLEVIS PIN	2	A
2	5715196	XPR PLASTIC COVER BLOCK 105 X 80	2	C
3	5550183	FTG ELB -06 JIC -06L ORB	1	-
4	5505350	MODEL#211 HAIR PIN/ LARGE	2	-
5	5530261	PHPS M6 x 1 x 10	4	-
6	5545347	WASHER M12 FLAT WASHER	2	-
7	5535354	NUT M12 x 1.75	2	-
8	5535001	NUT M8 x 1.25 NL	4	-
9	5530010	HHB M8 x 1.25 x 25	4	-
10	5545200	WASHER M10 x Ø18 SL	4	-
11	5535998	NUT M10 x 1.5	4	-
12	5530760	HEX HEAD BOLT M10x1.25x35	4	-
13	5540075	2.5 WIRE DIA., Ø20.5 x 75 LG	4	-
14	5550147	FIG NPL -04 JIC x -04 NPT	2	-
15	5550178	FTG TEE -04JIC -04JIC -06NPT	1	-
16	5550109	FTG ELB -06 JIC x -06 F NPT	1	-
17	5545355	C WASHER SHIM FOR LIFTS	20	-
18	5545341	WASHER M10 x Ø20 FLAT	4	-
19	5535013	NUT M10 x 1.5 NL	4	-
20	5505031	ROTOR CLIP 12mm SS	1	-

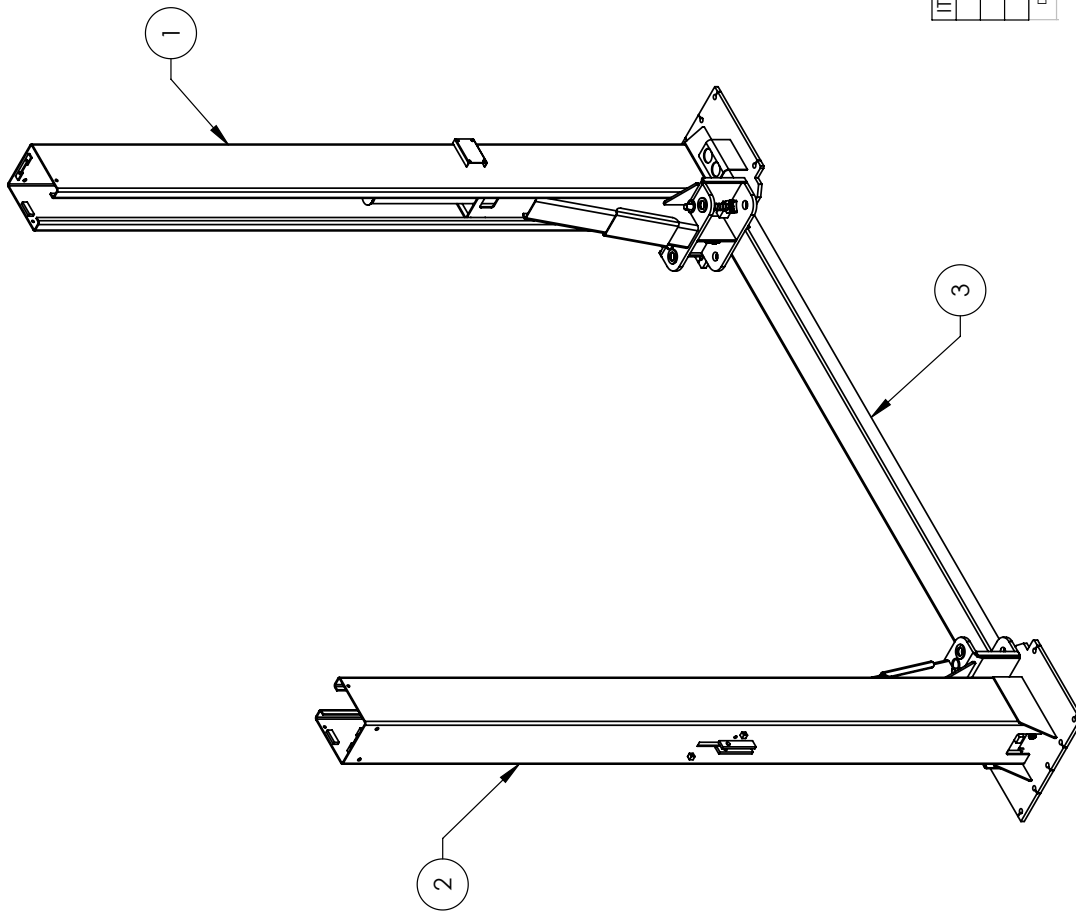
DATE
02/10/2010
02/19/2016

BendPak
1645 LEMONWOOD DR.
SANTA PAULA, CA 93060

TITLE:
XPR-9D/12FD PARTS BAG

SIZE DWG. NO. **A** 5174114

REV **H**

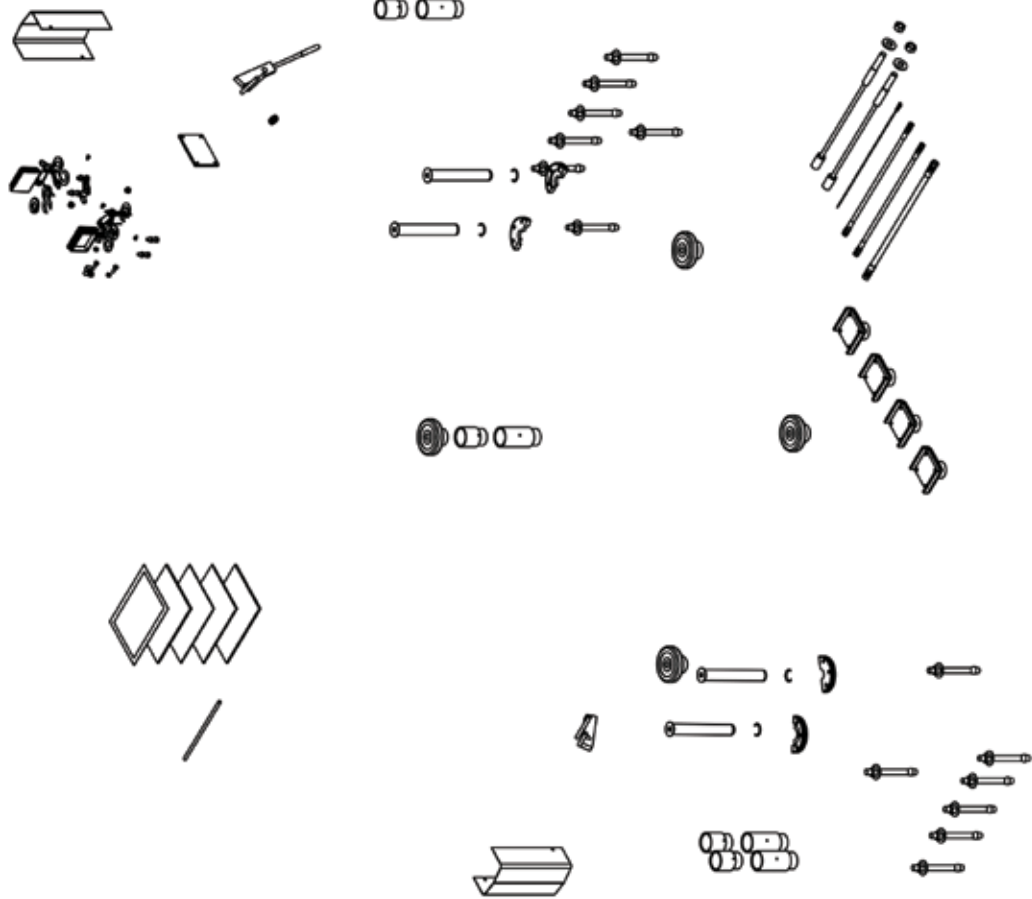


ITEM NO	PART NUMBER	DESCRIPTION	QTY	REV
1	5215356	XPR-12FD POWER SIDE POST ASSEMBLY	1	V
2	5215233	XPR-12FD OFF SIDE POST ASSEMBLY	1	U
3	5210047	XPR-12FD GROUND PLATE	1	C

DO NOT SCALE DRAWING		NAME	DATE
		TM	02/12/2010
		CA	02/23/2016


 1645 LEMONWOOD DR
 SANTA PAULA, CA 93060

TITLE: XPR-12FD LIFT
 SUPERSTRUCTURE
 SIZE DWG. NO. A 5245137
 REV V



ITEM NO	PART NUMBER	DESCRIPTION	QTY	REV
1	5174114	XPR-9D/12FD PARTS BAG	1	H
2	5540281	C RING Ø38mm OD 5103-150	4	-
3	5210007	XPR POWER SIDE SAFETY ASSEMBLY	1	F
4	5210010	XPR OFF SIDE SAFETY WELDMENT	1	E
5	5715003	POWER UNIT VIBRATION DAMPENER	1	B
6	5215701	ROUND LIFT PAD ADAPTER ASSEMBLY	4	B
7	5736605	XPR-12 BOLT ON ARM RESTRAINT GEAR	4	E
8	5210009	XPR-9D/10/12/12FD/15/18C OFF SIDE SAFETY COVER	2	E
9	5746192	ARM ADAPTER, MEDIUM	4	-
10	5746193	ARM ADAPTER, LONG	4	C
11	5535011	NUT M22 x 2.5 NL	2	-
12	5545345	WASHER M22 x 50mm FLAT	2	B
13	5505346	XPR-12C/12FD LIFT HEAD PIN WELDMENT	4	B
14	5595124	XPR-12-FD Ø2.4 x 7400 SAFETY CABLE	1	B
15	5570118	XPR-12FD HYDRAULIC HOSE ASSEMBLY Ø6.35 x 1562mm DS	2	C
16	5595070	XPR-12FD CABLE ASSY Ø12 x 10800mm	2	B
17	5570126	XPR-12FD HYDRAULIC HOSE ASSY Ø10 x 3150mm DS	1	C
18	5746166	DOUBLE THREADED ROD M10 x 1.5 x 295	2	B
19	5530308	AB 3/4" x 7"	14	-
20	5215702	CRADLE LIFT PAD LARGE ADAPTER ASSEMBLY	4	C
21	5900280	ALI/LP FRAME ENGAGING LIFTS GUIDE	1	-
22	5900152	ALIGN OIM OPERATION INSPECTION & MAINTENANCE	1	-
23	5900147	SAFETY MANUAL ALI / SM 93-1	1	-
24	5905151	SAFETY TIPS CARD ALI-ST 90	1	-
25	5900952	XPR-12FD/12FDL-LWB INSTALLATION MANUAL	1	-

NAME	DATE
TM	12/15/2015

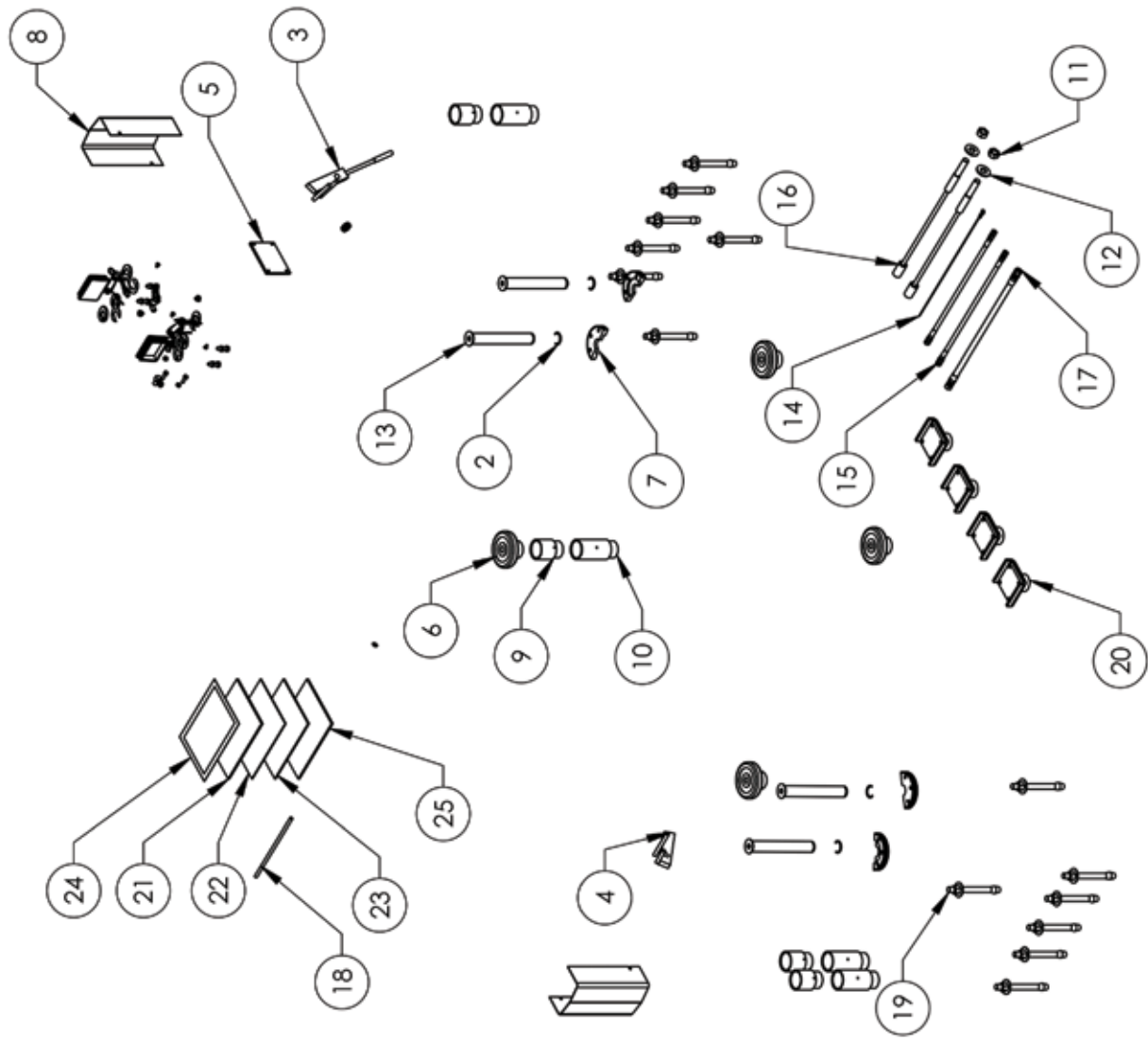
BendPak 1645 LEMONWOOD DR.
SANTA PAULA, CA 93060

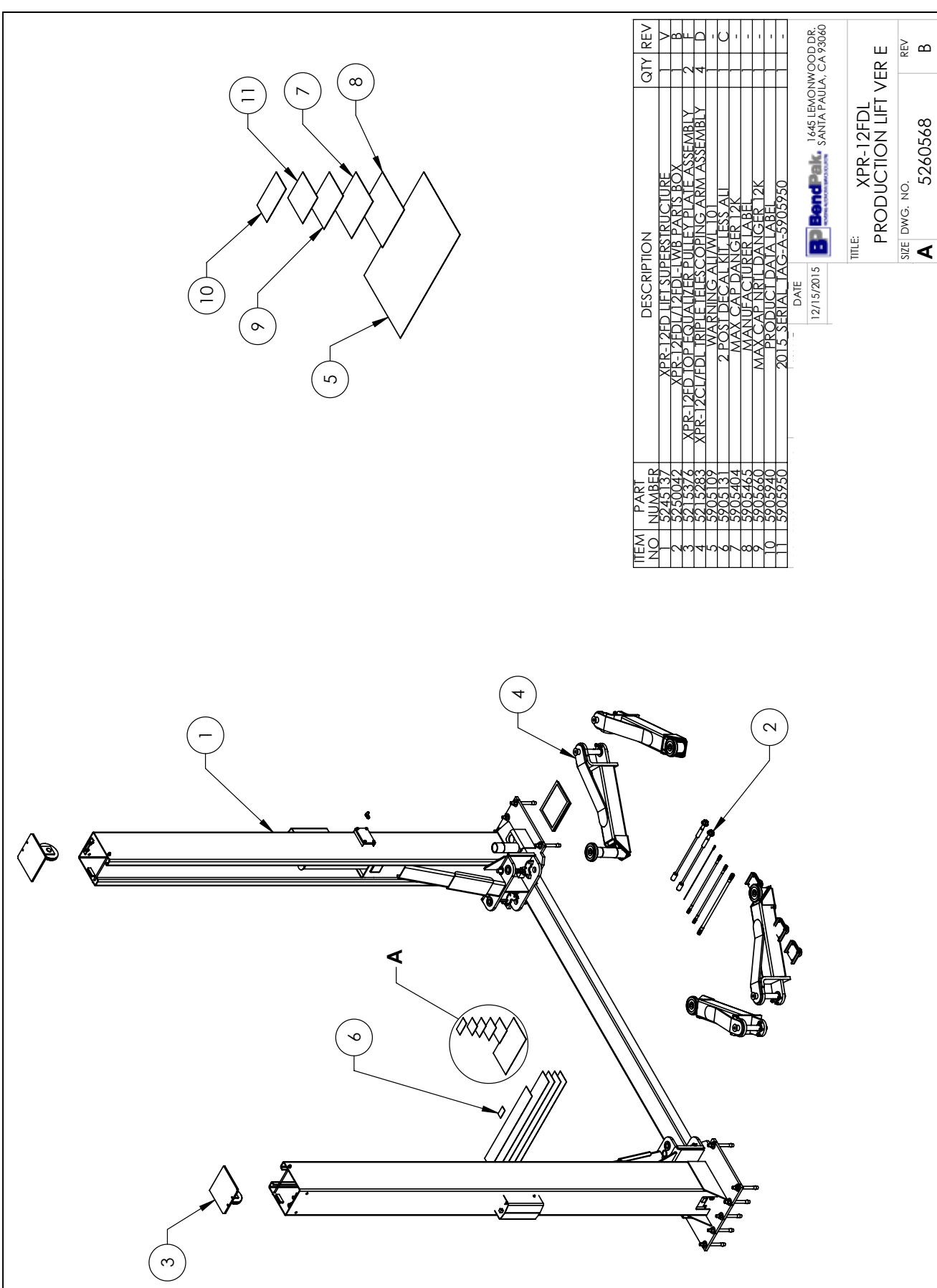
TITLE: XPR-12FDL/12FDL-LWB
PARTS BOX
SIZE DWG. NO. **A** 5250042
REV **B**

BendPak 1445 LENOXWOOD DR.
SANTA PAULA, CA 95060

TITLE: XPR-12FDL/12FDL-LWB
PARTS BOX

SIZE	DWG. NO.	REV
A	5250042	B





ITEM NO	PART NUMBER	DESCRIPTION	QTY	REV
1	5245137	XPR-12FDL LIFT SUPERSTRUCTURE	1	V
2	5250042	XPR-12FDL/12FDS LWB PARTS BOX	1	B
3	5215376	XPR-12FDL TOP EQUIPMENT PULLEY PLATE ASSEMBLY	2	F
4	5215283	XPR-12CL/FDL TRIPLE TELESCOPING ARM ASSEMBLY	4	D
5	5205109	WARNING ARM/W/101	1	C
6	5205131	2 POST DECAL NUTLESS ALL	1	-
7	5205404	MAX CAP DANGER 12K	1	-
8	5205465	MANUFACTURER LABEL	1	-
9	5205660	MAX CAP NUT DANGER 12K	1	-
10	52059240	PRODUCT DATA LABEL	1	-
11	52059250	2015 SERIAL TAG-A-52059250	1	-

DATE: 12/15/2015

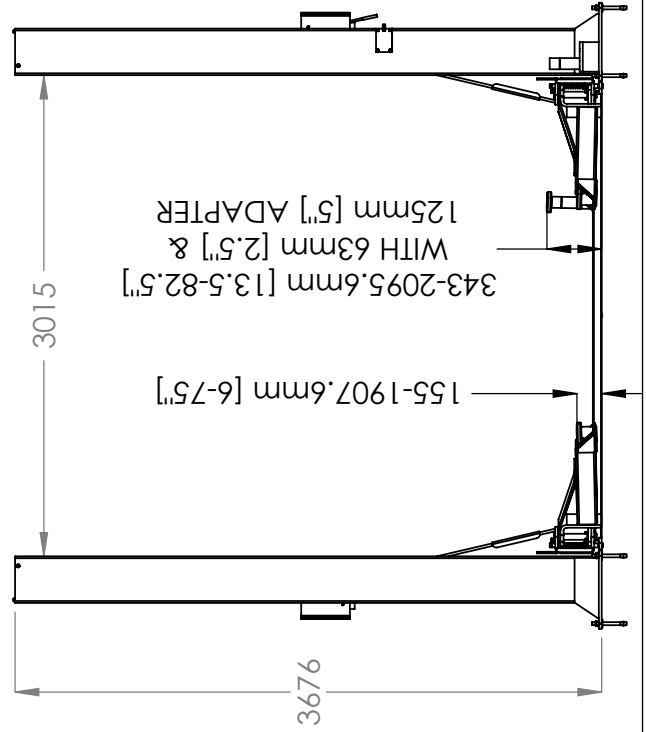
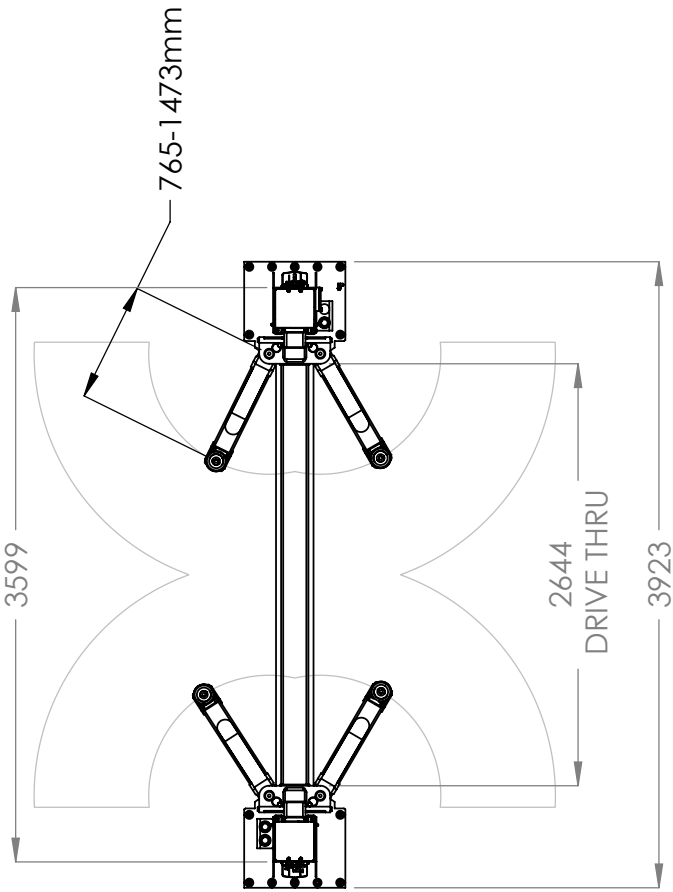
1645 LEMONWOOD DR.
BendPak SANTA PAULA, CA 93660
www.bendpak.com

TITLE: XPR-12FDL
 PRODUCTION LIFT VER E

SIZE DWG. NO. **A** 5260568

REV **B**

TITLE: XPR-12FDL PRODUCTION LIFT VER E	
SIZE DWG. NO.	REV
A 5260568	B
SCALE: 1:45	
SHEET 2 OF 2	





EC Type-Examination Certificate



(Fm 210-017, Rev.10)

For the requirements of the Machinery Directive 2006/42/EC

For Annex IV machinery

Certificate No.: CE-C-20120209-01-12-5D
Date of first issue: 2014.01.27
Date of last review: 2019.01.27
Date of next review: 2024.01.26

NAME AND ADDRESS OF THE MANUFACTURER: Bendpak Inc.
 1645 E. Lemonwood Drive, Santa Paula, CA, United States of America

PRODUCT DESCRIPTION/ TYPE AND MODEL: Range of 12,000lb (5443kg) 2 post vehicle servicing lift
 Floor plate (bottom bar) Direct drive
 XPR-12FDL 144H x 155W x 69 Lift in

APPLICABLE STANDARDS: EN1493:2010 Vehicle Lifts
 EN 60204-1:2006+A1:2009 Safety of machinery - Electrical equipment of machines - Part1:General requirements

A COPY IS AVAILABLE FROM: CCQS UK Ltd., 5 Harbour Exchange, London, E14 9GE, UK

RE-ISSUE HISTORY
 CE-C-20120209-01-12-5A first issue
 CE-C-20120209-01-12-5B reissued to rename XPR range
 CE-C-20120209-01-12-5C reissued with revised certificate template
 CE-C-20120209-01-12-5D This issue – 5 year review – No changes
 Delete discontinued model XPR-12FDL-LWB

The technical file, accompanying documentation and the equipment which they describe have been found to be in compliance with the requirements of the Machinery Directive 2006/42/EC.

The responsible person defined above has responsibility for ensuring that all future serial manufacture of the machinery conforms to the sample submitted for EC type-examination referenced above.

Any changes to the design of the machinery certified here must be advised to CCQS UK Ltd. for re-assessment.

A CE marking should not be fixed to the equipment until the requirements of all relevant directives have been met.

Approved by: Owen Bian – Office Manager

Date: 2019.01.27

Appointed by UK Government
 as a Notified Body
 for CE Marking No. 1105

CCQS UK Ltd.,
 5 Harbour Exchange, Canary Wharf,
 London, E14 9GE, UK
 Tel: +44 (0) 20 7868 1509
 Email info@ccqs.co.uk

If in any doubt about the integrity of this certificate,
 please verify it on our website at
<http://www.ccqs.co.uk>



Declaration of Conformity

The equipment which accompanies this declaration is in conformity with EU Directive:

2006/42/EC Machinery Directive

Manufacturer

BendPak Inc.
1645 Lemonwood Dr
Santa Paula Ca, 93060
USA

A copy of the Technical file for this equipment is available from:

CCQS UK Ltd., Level 7, Westgate House, Westgate Rd., London W5 1YY UK

Description of Equipment

Two-Column Vehicle Service Lift

XPR-12FDL	12K Cap. / Floorplate / Direct-Drive / Two-Post Lift	Serial Numbers 5175403-00000 to 99999-99999
XPR-12FDL-LWB	12K Cap. / Floorplate / Direct Drive/Long-Wheelbase Arms / Two Post Lift	Serial Numbers 5175404-00000 to 99999-99999

A sample of this machinery has been presented to Notified Body number 1105.

CCQS UK Ltd., Level 7, Westgate House, Westgate Rd., London W5 1YY UK

Who have issued an EC type-examination certificate number CE-GB-20150427-01-5A dated 2015.12.10.

The equipment in respect of which this declaration is made conforms to the example to which that certificate relates, and that certificate remains valid.

This declaration of conformity is issued under the sole responsibility of the manufacturer.

The following harmonised standards have been used:

EN1493:2010 Vehicle Lifts

Authorised signatory of manufacturer



Signature:

Name of signatory: Jeffrey S. Kritzer

Position in company: Senior Vice President of Marketing and Sales

Place signed: Santa Paula, CA, USA

Date signed: April 22, 2016



1645 Lemonwood Dr. ● Santa Paula, CA. 93060, USA
Toll Free: 1(800) 253-2363

FOR TECHNICAL SUPPORT
1-(800) 253-2363 Ext. 196
TO ORDER PARTS
1-(800) 253-2363 Ext. 191