

# Moveable Shelving Systems

Success or failure can be decided at any point in the logistics process – from the distribution center to the warehouse to the backroom to the sales floor. And, it is at each of these key points that Morgan Marshall can help assure a profitable outcome for your enterprise. For more than half a century, we have been engineering a revolution in the way products are stored, inventoried, accessed, and displayed. From fixtures to furniture, shelving to stairways, multi-tiers to mechanization, gondolas to garment racks, Morgan Marshall has created unique systems that have improved the efficiency and economy of operations everywhere.

Today, Morgan Marshall is part of the Leggett & Platt Store Fixtures Group. Through this union, we can bring our clients the global resources of a Fortune 500 Company. With 30 different branches nationwide and more than 10 million square feet of manufacturing space, no job is too big and no challenge is too great. We're ready to show you how to improve your operation front to back.

**pallet rack**

material handling

archival/record storage

structural rack systems

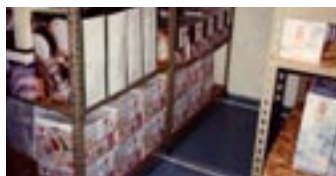
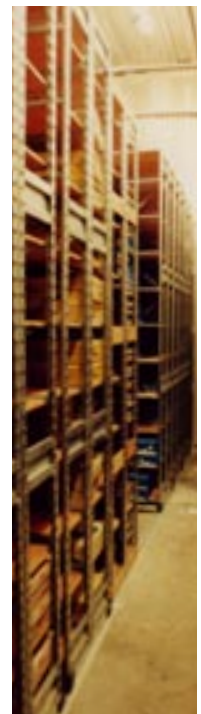
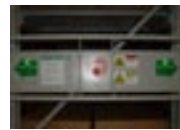
storage shelving systems

gondola

**moveable shelving systems**

installation

wide span/bulk shelving



# Moveable Shelving Systems



## Manual

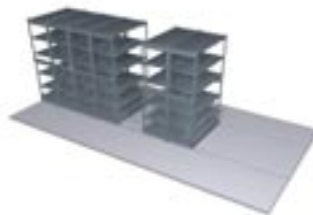
Our Systems are designed to get your entire operation moving in the right direction.

Since you pay for every square foot of your facility, shouldn't every single inch of that space be paying off for you? Morgan Marshall's Moveable Storage Systems can help you eliminate wasted space and wasted aisles, as you maximize the profit potential of your entire operation. Our moveable storage systems can condense and hold virtually all types of merchandise and media giving you up to 50% more available space. Plus, our moveable systems not only let you maximize the space beneath your feet, but the vertical space above your head. Sturdy, stable and easily moved, they improve the efficiency of your staff, reduce maintenance, simplify searches and enhance access to products or information. And Morgan Marshall offers you a variety of systems to meet your specific needs and accommodate the weight and type of material and merchandise you want to store. Here's how we can get your business rolling...



## Mechanical Assist

**Conventional fixed shelving with multiple aisles**



**Moveable back room shelves save up to 50% floor space**



## Electrical

**...or increase your storage capacity up to 100%**



# Manual shelving systems

Our Manual Systems are the heavyweight champs for lighter weight storage needs.

If your backroom operation includes storing and retrieving light-weight merchandise and supplies, our manual systems are right for you. With just the push or pull of a handle, you can expand and condense your fixtures, and have fast and ready access to the products, files or materials you need. They offer you rugged, durable construction, yet are designed to be easily moveable by hand for fast, easy accessibility. Highly versatile, too, our manual system can be used with our Rivet Rack and Express Rack systems.

Express Rack

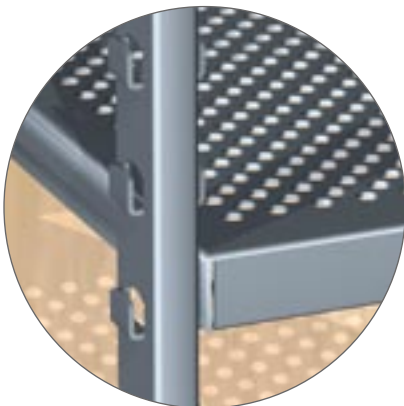


Rivet Rack

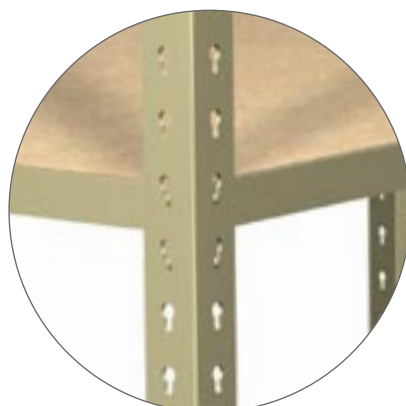


## Manual Shelving Options

Express Rack



Rivet Rack



# Manual shelving systems

## Carriage Features

- Factory welded, one piece unit
- Various stock sizes and custom manufactured to order
- "Plunger" brake system
- 2 Wheel & track system options to address all flooring environments
- Welded mounting angles to secure multiple shelving options



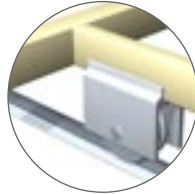
MANUAL CARRIAGE SIZE OPTIONS\*

WIDTH	LENGTH
1 1/2"	3', 4', 5', 6', 7', 8', 9', 10', 11', 12'
2"	
2 1/2"	
3"	
3 1/2"	
4"	
4 1/2"	
5"	
5 1/2"	

\*additional custom sizes manufactured

### Railwheel System

- 4" diameter wheel affixes to bottom of carriage
- Grooved wheel rolls on floor bolted aluminum rail track
- Capacity 450lbs / linear ft



### Insetwheel System

- Precision placed axel holes
- 1 1/2" diameter wheel is housed inside carriage
- Permanent wheel lubrication
- Capacity 450lbs / linear ft

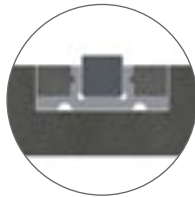


## Track Features

### Railwheel Track\*

- Solid aluminum rail track
- Steel insert running surface for optimal weight transfer
- Efficient and secure bolt-to-floor installation
- ADA compliant

\* "Trenched" track option available to accommodate flooring inconsistencies



### Insetwheel Track

- Solid aluminum groove track
- Steel inserts running surface for optimal weight transfer
- Efficient and secure bolt-to-floor bolt installation
- Splicing capability to increase length
- ADA compliant



## Anti-Tip Options

Anti-Tip systems meet all seismic safety requirements for safety and durability.

### Overhead Anti-Tip



### "Z"-Rail Anti-Tip



## Operating Mechanism

### Push/Pull handle

- Designed with easy to use 8 1/2" long and 1/2" diameter handle
- 4 self tapping screws secure the handle to upright unit



# Mechanical assist shelving systems

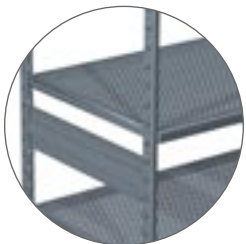
It doesn't take a lot of effort to see the advantages of our Mechanical Systems.

With the simple turning of crank, you can transform your storage space — condensing and expanding your storage system at will. And, yet, saving space is only the beginning of the benefits our mechanical systems offer you. They're designed to handle your bigger storage needs. In fact, these systems allow you to extend your racks higher, helping you fully maximize your vertical space - and the profit potential of you facility. Even with its greater capacity, moving the racks require little effort thanks to our smooth mechanical assist. For maximum flexibility and customization, these systems support six different racks — Rivet, Express, two types of pallet, our Mega, and B-Rack systems — and their accessories.

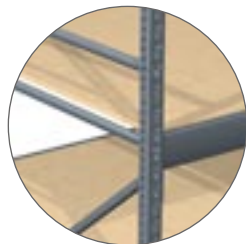


## Mechanical Shelving Options

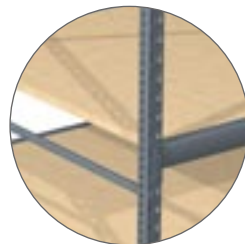
Express Rack



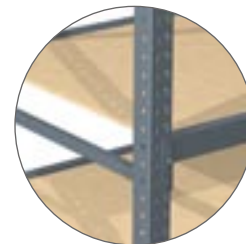
Mega Rack



"B" Rack



Pallet Rack



# Mechanical assist shelving systems

## Carriage Features

- Factory welded, one piece unit
- Various stock sizes and custom manufactured to order
- Brake engaged
- Welded mounting angles (fastening cleats) to secure multiple shelving options
- Consists of sleek "gear box" that houses drive system
- 4" diameter hardened steel wheels affix to bottom of carriage
- Grooved wheel rolls on "trenched" "railbar" track
- Drive axle moves entire carriage, eliminating sway
- Capacity 1000lbs / linear ft

MECHANICAL ASSIST CARRIAGE SIZE OPTIONS\*

WIDTH	LENGTH
36"	8', 9', 10', 12', 16'
48"	
80"	

\*additional custom sizes manufactured



## Track Features

- Installed "trenched" railbar track system
- Trenched underlayment provides additional track strength and durability
- Grout poured track installation bridges floor irregularities for smooth running surface
- ADA compliant



## Anti-Tip Feature

Anti-tip system meets all seismic requirements for safety and durability

- "Z"-Rail Anti-Tip



## Operating Mechanism

Single prong ergonomic "Hand Ball" crank

- 8" crank with 1 1/2" diameter ball handle
- Positive locking mechanism
- Approximately 4" carriage movement per 360° crank turn



# Electric moveable shelving systems

Our electric systems offer you a true display of power.

Just push a button and a whole new world of efficiency will open in your backroom. State of the art, these systems are engineered to fully maximize your space and the productivity of your staff. They are also designed to accommodate three different shelving systems: our tear drop and slot pallet racks, B-racks and Mega racks—and their optional accessories. Our UL approved electrical systems also feature an exclusive LED technology that offers...enhanced safety controls that stop the system on sight, not contact, and sense when an item or person is in the aisle... a stop-point memory for varying aisle size needs and/or oversized items...and sequential movement that dramatically improves aisle accessibility. So, if you're looking for a way to maximize space and minimize maintenance, take a look at the low-down on our high-tech systems.

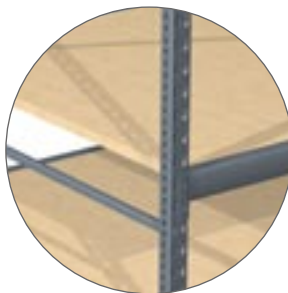


## Mechanical Shelving Options

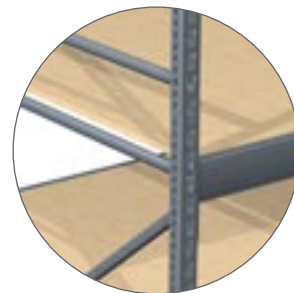
Pallet Rack



“B” Rack



Mega Rack





## Carriage Features

- Factory welded, one piece unit
- Various stock sizes and custom manufactured to order
- Brake engaged
- Welded mounting angles (fastening cleats) to secure multiple shelving options
- Consists of sleek "gear box" that houses drive system
- 4" diameter hardened steel wheels affix to bottom of carriage
- Grooved wheel rolls on "trenched" "railbar" track
- Drive axle moves entire carriage, eliminating sway

### Options:

- emergency hand crank
- battery override (emergency use)

- **Capacity: Heavy Duty System — 1000lbs / linear ft**
- **Extra Heavy Duty System — 2000lbs / linear ft**



### ELECTRICAL MOVEABLE CARRIAGE SIZE OPTIONS\*

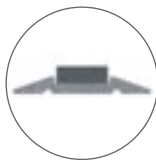
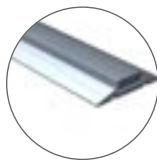
WIDTH	LENGTH
24"	8'-6", 8'-10 1/8", 13'-13",
30"	17'-3", 21'-6", 28", 31"
36"	
48"	
50"	

(available in extra heavy duty option)  
\*additional custom sizes manufactured



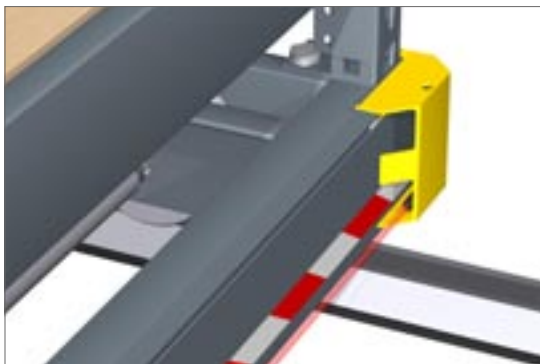
## Track Features

- Installed "trenched" railbar track system
- Trenched underlayment provides additional track strength and durability
- Grout poured track installation bridges floor inconsistencies for smooth running surface
- ADA compliant



## Enhanced Safety Control

- Dynamic spacing sensors stop system on site, not contact
- Photosweep safety stops unit when object enters aisle
- Sight safety stops unit if object exists in aisle
- Memory safety that remembers stop points for varying aisle size needs and/or oversized items



## Operating Mechanism

- Easy hands free, one touch lighted "Control Logic Box" system starts and stops carriage movement
- Programmable aisle widths and Stop-point memory
- Sequential movement capabilities



# Moveable storage systems





## Moveable Storage Systems

### Manual Systems

Available with:

- 1 Rivet Rack
- 2 Express Rack

### Mechanical Assist Systems

Available with:

- 3 Express Rack
- 4 Mega Rack
- 5 "B" Rack
- 6 Pallet Rack

### Electric Moveable Systems

Available with:

- 7 Mega Rack
- 8 "B" Rack
- 9 Pallet Rack

*Heavy Duty and Extra Heavy Duty System available*

## Morgan Marshall Division

383 East 16th Street  
Chicago Heights, IL 60411-3798  
Phone 708.758.6300  
Fax 708.758.5858  
www.leggettsfg.com



Proud member of  
**nasfm**  
NATIONAL ASSOCIATION OF STORE FIXTURE MANUFACTURERS

### Also available

Archival/  
Record Storage

Gondola

Material  
Handling

Storage  
Shelving System

Pallet Rack

Structural  
Rack Systems

Wide Span/  
Bulk Shelving