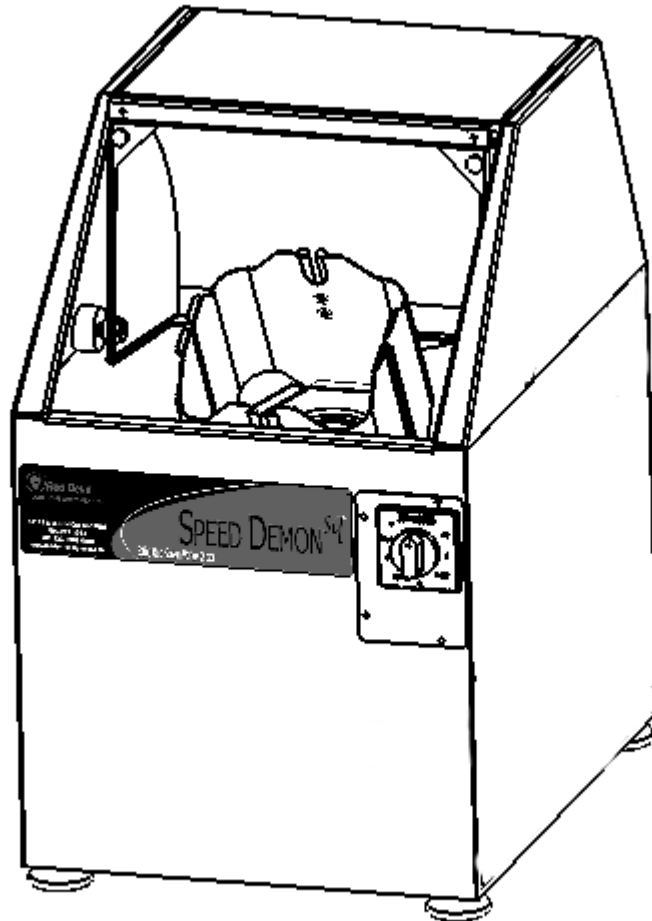




www.reddevilequipment.com



June 2006 Rev. I

Speed Demon Paint Mixer

Model 0-5300-00-SQ(110V, 60 Hz)
Model 0-5300-PB-SQ (110V, 60 Hz)
Model 0-5300-E1-SQ (220V, 50Hz)

Owner's Manual



Contents

Introduction	2
Safety Precautions	3
Installation	4
Operation	5
Maintenance	6
Troubleshooting	6
Wiring Diagrams	7-8
Replacement Parts Lists	9
Warranty Terms and Conditions	13



Introduction

The RED DEVIL EQUIPMENT Speed Demon^{SQ} Paint Mixer accommodates standard 1-gallon round paint cans and Square 1-gallon cans (6.5" x 6.5"); when used with the 9-7842-03 Adapter, it also accommodates quart cans.

To take full advantage of your mixers capabilities, you should understand its features and proper operation.

Before operating the machine, read this manual completely. In particular, study the section on "Mixing Procedure" (page 5). Practice installing and removing a pail before attempting to mix paint. Save the manual for future reference.

Follow all safety instructions!

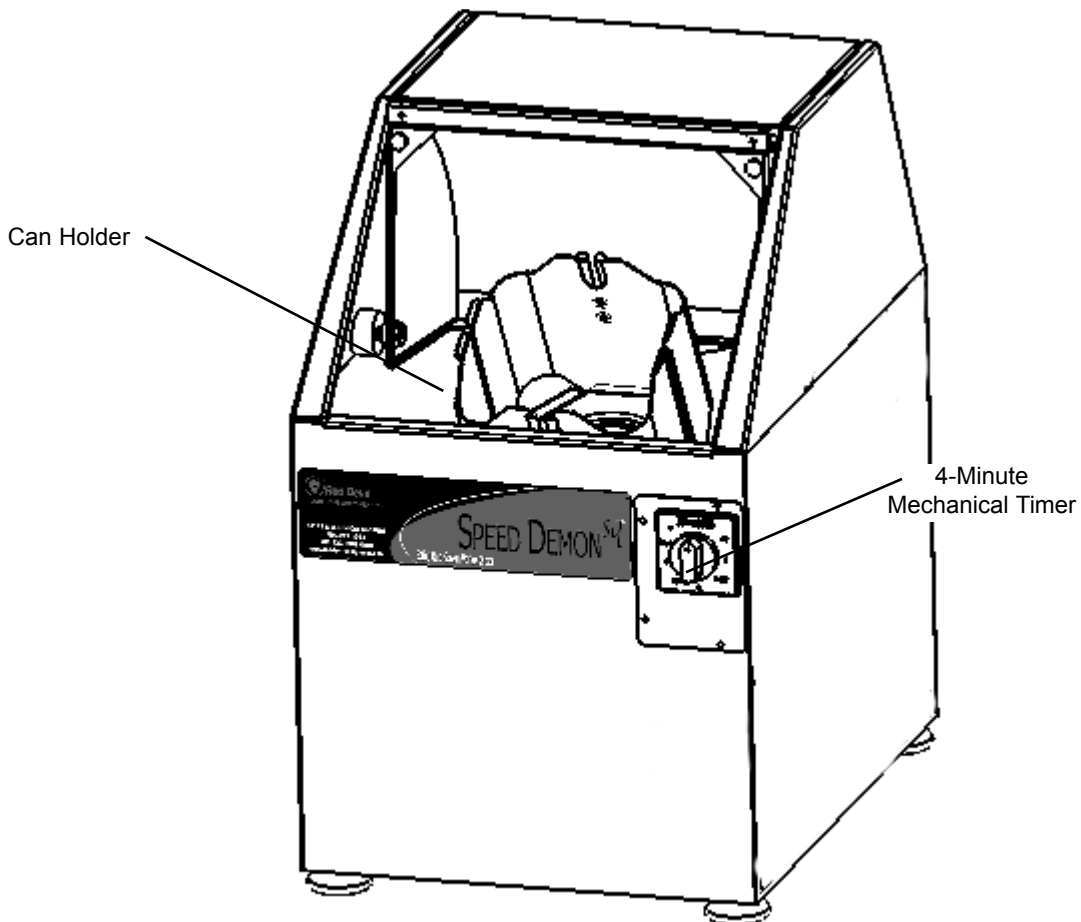


Fig. 1: Speed Demon 1-Gallon Paint Mixer (Model 0-5300-00-SQ shown)

"Patent Pending"



Safety Precautions

Always follow these safety precautions when operating the RED DEVIL EQUIPMENT Speed Demon Paint Mixer:

INSTALLATION

1. **Before operating the machine**, read this Owner's Manual carefully. Learn the machine's applications and limitations.
2. **Ground the machine properly**. Be sure to follow proper grounding and electrical procedures.
3. **Avoid extension cords**. To minimize the risk of tripping, improper electrical grounding, or overloading, extension cords are not recommended.
4. **Use the proper power source**. Refer to the machine data plate. If the machine data plate has been removed or is unreadable, call the RED DEVIL EQUIPMENT Customer Service Department (see the back cover of this Owner's Manual) before connecting the mixer to a power source.
5. **Avoid dangerous environments**. Do not use the machine in a damp or wet environment. Keep the work area well lit.

6. **Keep the work area clean**. Cluttered areas and benches invite accidents. To prevent accidents, be sure all electrical cords are out of the way.

OPERATION

1. **Keep Customers away**. All customers should be kept away from the work area. The mixer should be used **only** by properly trained workers.

MAINTENANCE

1. **Keep the machine clean**. Clean all surfaces with a mixture of lukewarm water and mild detergent. Avoid solvent based cleaners or thinners.
2. **To avoid electric shock**, don't get the timer, control panel, or wiring wet.
3. **Disconnect the electric plug**. When cleaning the mixer or doing maintenance work, always unplug the machine.
4. **Service properly**. Follow the maintenance procedures outlined in this manual. If problems occur, contact the RED DEVIL EQUIPMENT Customer Service Department (see back cover of this Owner's Manual).

**WARNING**
AVERTISSEMENT



EXPLOSION / HAZARD

- Do Not Use In Hazardous Environment
 - Dust
 - Flammable Vapor
- Use factory container only
- Do not mix highly-flammable materials which have low flash points (such as gasoline, or concentrated thinners and solvents)
- (See Owner's Manual before installing or operating)

DANGER D'EXPLOSION

- Ne pas opérer dans des endroits où il y a de la poussière ou des vapeurs inflammables.
- Utiliser seulement des bidons provenant du manufacturier.
- Ne pas mélanger des produits ayant des points d'inflammabilité bas (Exemple: Essence, diluants concentrés et solvants).
- (Lire le manuel d'opération avant d'installer ou d'opérer l'appareil)

SAFETY
INSTRUCTIONS
INSTRUCTIONS
DE SÉCURITÉ

- Review Manual before using.
- Use only factory supplied paint container.
- Ensure paint can is properly clamped.
- Disconnect power cord before servicing machine.
- To reduce the risk of electrical shock or injury, use indoors only.
- Se familiariser avec le manuel avant d'opérer.
- Utiliser seulement des contenants provenant du manufacturier.
- S'assurer que le bidon est bien serrés en place.
- Débrancher l'appareil avant d'effectuer des réparations.
- Pour réduire le risque de choc électrique ou de dommages, employez à l'intérieur seulement.

Above warning does not apply to explosion proof models



Installation

Safety Precautions

1. **Before operating the machine**, read this Owner's Manual carefully. Learn the machine's applications and limitations.
2. **Ground the machine properly.** Be sure to follow proper grounding and electrical procedures described below.
3. **Avoid extension cords.** To minimize the risk of tripping, improper electrical grounding, or overloading, extension cords are not recommended.
4. **Use the proper power source.** Refer to the machine data plate. If the machine data plate has been removed or is unreadable, call the RED DEVIL EQUIPMENT Customer Service Department (see the back cover of this Owner's Manual) before connecting the mixer to a power source.
5. **Avoid dangerous environments.** Do not use the machine in a damp or wet environment. Keep the work area well lighted.
6. **Keep the work area clean.** Cluttered areas and benches invite accidents. To prevent accidents, be sure all electrical cords are out of the way.

Assembly

The Speed DemonSM Mixer is shipped fully-assembled. Remove the long shipping bolts that extend out of the bottom of the mixer into the pallet. Unpack the machine and set it on a firm and level surface.

IMPORTANT: Before Plugging in the machine or attempting to operate it, remove all packing material. Plug machine into an appropriate grounded receptacle (see below).

Electrical Connection and Grounding Requirements

The machine **MUST BE GROUNDED**. If there should be an electrical short circuit, grounding reduces the risk of electric shock by providing an escape wire for the electric current.

modify the plug provided: if it won't fit in the outlet, have a proper outlet installed by a qualified electrician.

110V Units

Machines rated at 110V, 60 Hz are for use on a nominal 120V circuit. These machines have a grounding plug that looks like the one shown in Fig. 2.

Extension Cords

Avoid using extension cords. If an extension cord is unavoidable, consult a qualified electrician to determine what type of extension cord will satisfy the grounding, current capacity, and other requirements or the particular situation



Risk of electric shock.

Always have machine properly grounded.

The machine's power cord has a grounding wire with an appropriate grounding plug. This plug must be inserted into an electrical outlet that is properly installed and grounded according to all local codes and ordinances.

If you must repair or replace the power cord or plug, do not connect the grounding wire to either flat-blade terminal. The wire with insulation having an outer surface that is green (with or without yellow stripes) is the grounding wire.

Check with a qualified electrician if you don't completely understand these grounding instructions, or if you are not sure whether the machine is properly grounded. **Do not**

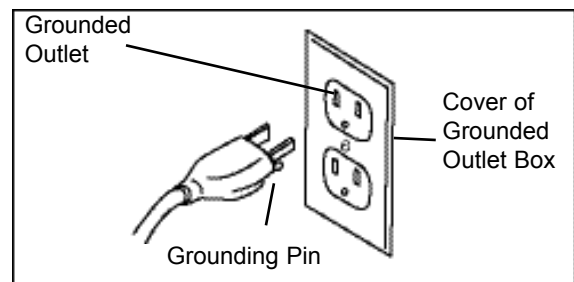


Fig. 2: Grounding Plug of 110V Units



Operation

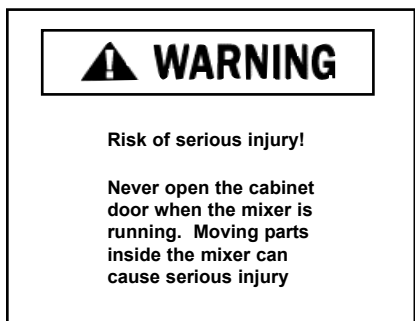
Safety Precautions

1. **Before operating the machine**, read this Owner's Manual carefully. Learn the machine's applications and limitations.
2. **Be sure machine is properly grounded.** See the "Installation" section for details
3. **Do not use in hazardous environment.** Avoid dust and flammable vapor. Use factory container only. Do not mix highly-flammable materials that have low flash points (such as gasoline, or concentrated thinners and solvents).
4. **Close can lids tightly.** If the can lid has been opened, reclose it tightly before mixing.
5. **Do not mix in breakable containers.** No glass, porcelain, or other breakable containers.
6. **Insert the can carefully** to ensure that it is held securely during the mixing cycle. Do not use if the can is damaged or missing bail handles.
7. **Keep the work area clean.** Cluttered areas and benches invite accidents. To prevent accidents, be sure all electrical cords are out of the way.
8. **Keep Customers away.** All customers should be kept away from the work area. The mixer should be used **only** by properly trained workers.
9. **Counterweight Insert.** To extend machine life, use of the aluminum handle insert counterweight is recommended.

Mixing Procedure

NOTE: If colorant has been added to the paint, be sure to reattach paint can lid tightly (using the RED DEVIL EQUIPMENT 1-Gallon Pail Press, Part No. 0-5090-01 for round cans only).

1. Open the cabinet Door



2. Load the can into the machine for mixing:
 - a. **Round Gallon Cans.** Insert the can into the can holder. Slip the bail handle into the clip retainers, making sure can is all the way to the bottom between the four lower tabs in the canholder.
 - Square Gallon Cans.** Insert the can into the can holder. Push can down until fully seated at the bottom of the can holder.
 - Quart Cans.** Place the can inside the special adapter (Fig. 3). Set round quart cans horizontal, with lid up (A); set square quart cans vertically, lid up (B). Insert the adapter into the can holder. Make sure the adapter lugs are lined up with the bail retainers (C) and adapter is all the way to the bottom of the canholder.
- b. Close the cabinet door. The mixer has a safety switch to prevent operation if the door is open.
- c. Set the timer to the desired setting .

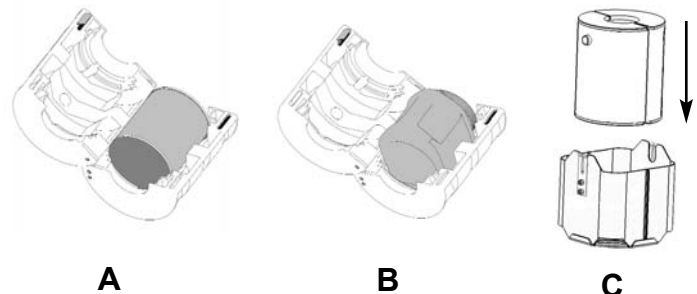


Fig. 3: Using the 9-7842-03 Can Adapter



Maintenance

Safety Precautions

1. **Keep the machine clean.** Clean all surfaces with a mixture of lukewarm water and mild detergent. Avoid solvent-based cleaners or thinners.
2. **To avoid electric shock,** don't get the timer, control panel, or wiring wet.
3. **Service Properly.** Follow the maintenance procedures outlined in this manual. If problems occur, contact the RED DEVIL EQUIPMENT Customer Service Department (see the back cover of this Owner's Manual).

Cleaning

Keep the machine clean. To remove colorant or base paint spilled on machine surfaces:

- **Base Paint or Water-Base/Glycol Colorant.** Use lukewarm water and mild detergent.

- **Oil-Base/Solvent Colorant.** Use mineral spirits, Duosol, or MEK sparingly in a well-ventilated room. To preserve the appearance of the machine do not use abrasives to clean machine surfaces.



Troubleshooting

WARNING

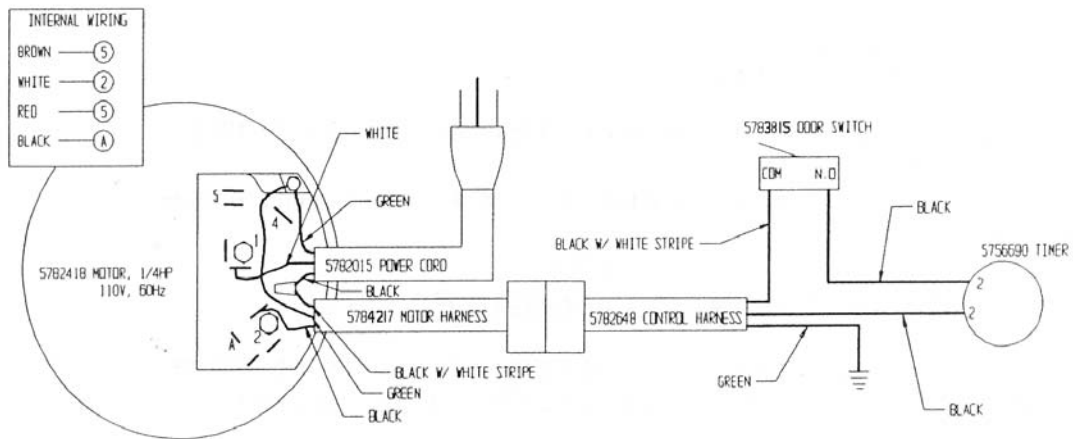
RISK OF ELECTRIC SHOCK
ALWAYS UNPLUG MACHINE
BEFORE SERVICING

PROBLEM	CAUSE	REMEDY
Mixer won't operate.	Power cord not plugged in.	Plug cord into grounded outlet.
	Building circuit breaker or fuse blown.	Reset breaker or replace fuse.
	Mixer door not completely closed.	Remove any obstruction and close door properly.
	Motor thermal protector activated.	Allow to cool, then restart.
	Faulty Timer.	Have qualified electrician replace
	Worn, damaged, or loose drive belt.	Unplug power cord, open mixer door, and visually inspect drive belt. If worn, damaged, loose, replace belt.
	Interlock switch faulty or needs adjustment.	Adjust switch arm, or have qualified electrician replace switch.
	Loose or broken wire connection	Replace or repair wire connection
Excessive vibration.	Damaged can.	Fix can or replace.
	Can not properly seated.	Reinsert into can holder.
Mixer doesn't shut off at end of mixing cycle.	Faulty timer.	Have qualified electrician replace timer.
Mixer doesn't shut off when door is opened.	Faulty door interlock switch.	Have qualified electrician replace switch.

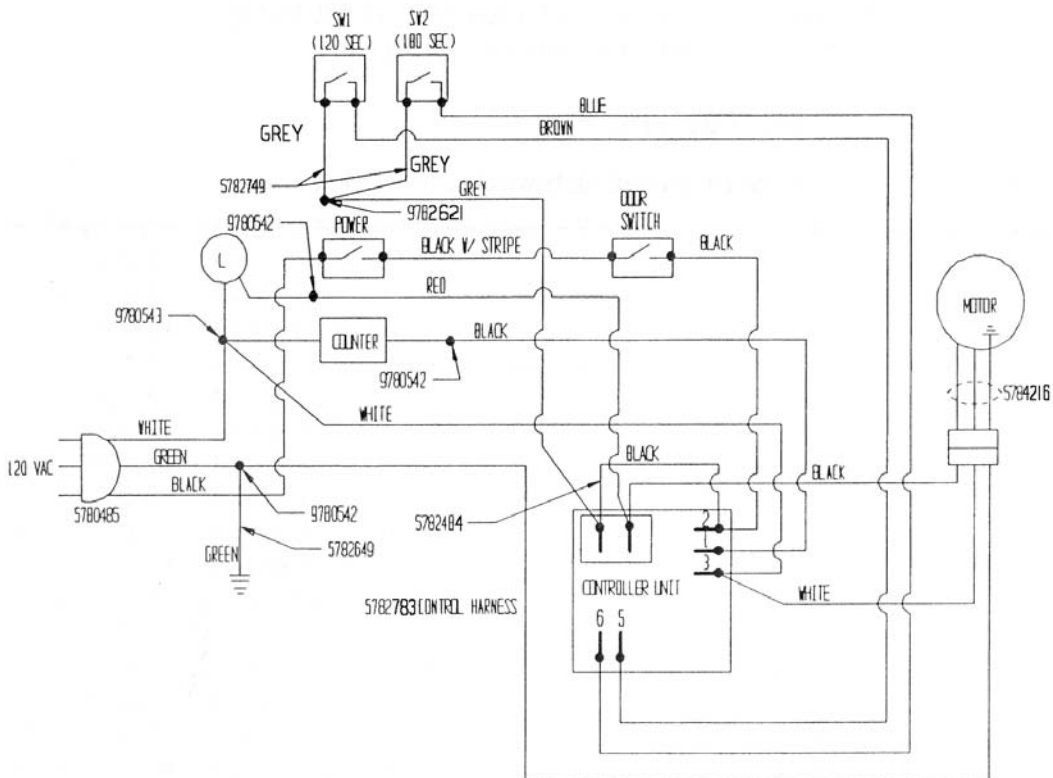


Wiring Diagrams

Model 0-5300-00-SQ



Model 0-5300-PB-SQ





Replacement Parts Lists

How to Order Replacement Parts

Replacement parts can be ordered from RED DEVIL EQUIPMENT CO. by mail, telephone, or FAX:

RED DEVIL EQUIPMENT CO.
14900 21st Ave North
Plymouth, MN 55447

763-533-2969
800-221-1083
763-533-0015 (FAX)

If you need help in determining the proper part(s) to order, call 1-800-221-1083 and ask for Customer Service. Always indicate the Model No. and Serial No. of the Mixer when ordering replacement parts.

General Parts Replacement Policies

While your Mixer is under warranty, do not attempt on-site repair or parts replacement without first contacting RED DEVIL EQUIPMENT CO. (to protect your warranty).

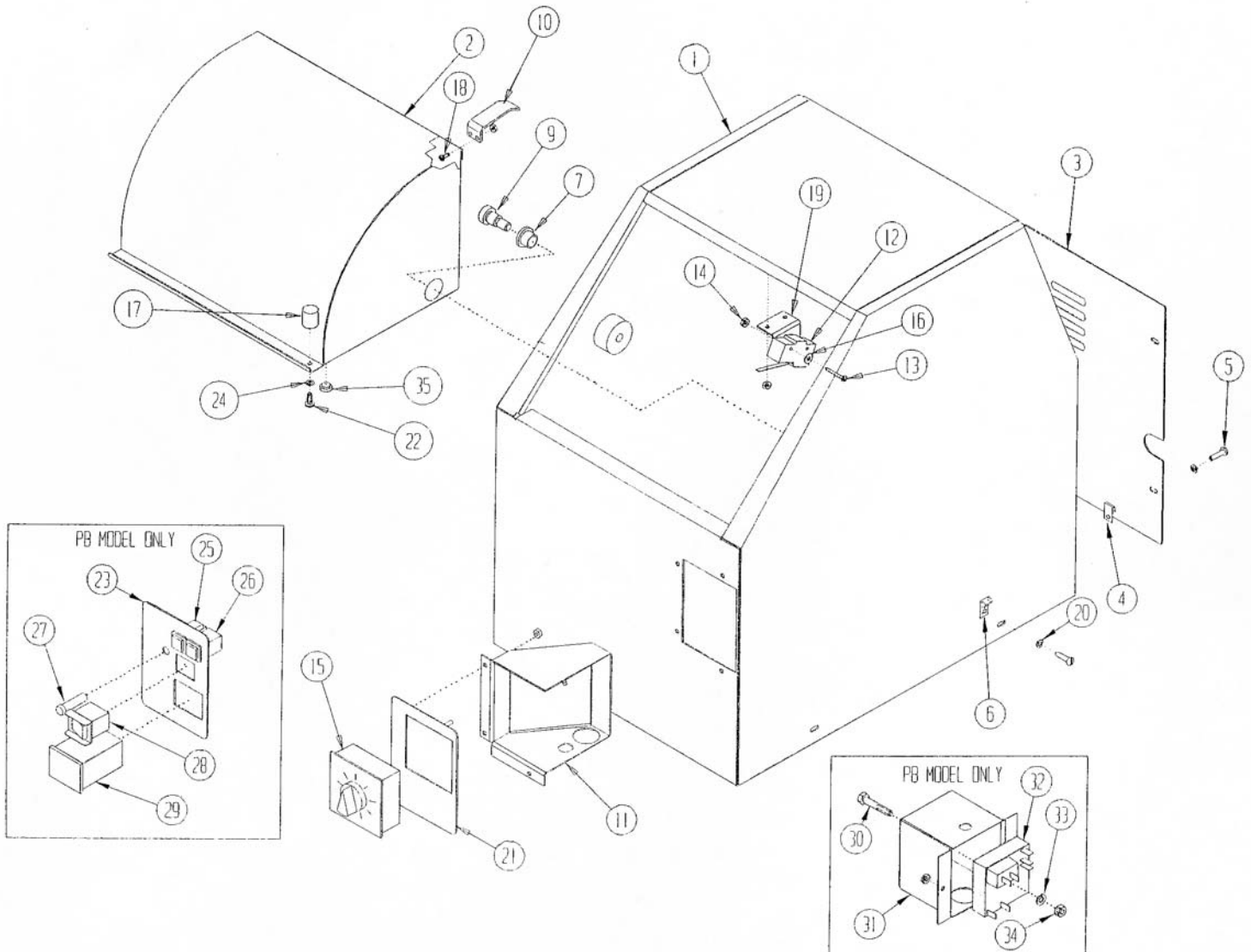
After the warranty expires, on-site servicing and parts replacement are available from RED DEVIL EQUIPMENT CO. Contact Customer Service for arrangements and costs.

Subsequent service cost quotations may be affected unless RED DEVIL EQUIPMENT CO. replacement parts (or their approved equivalent) are used.

Restocking Fee

A restocking fee will be charged on all **unused** parts which are returned.

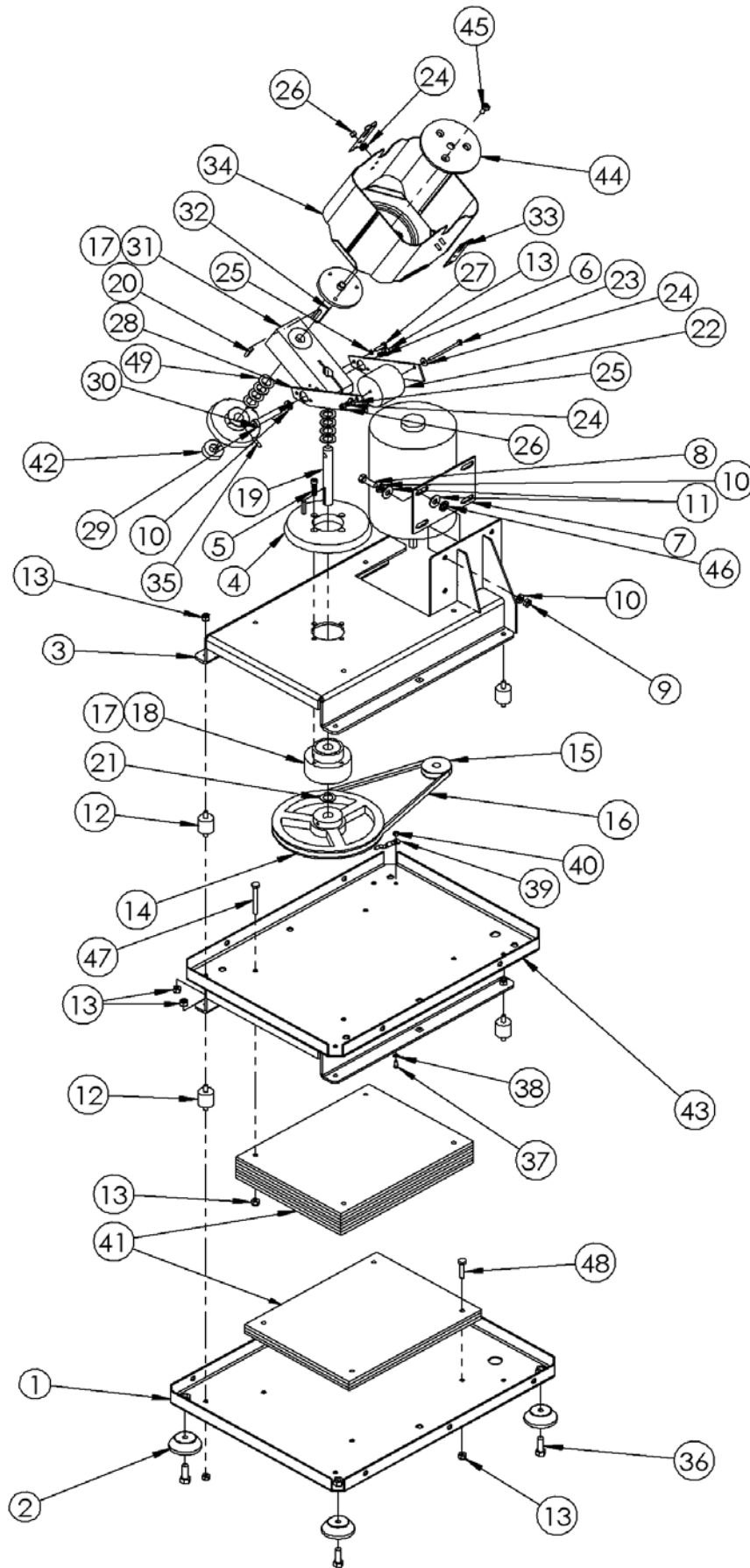
Enclosure Assembly



PART NO.	DESCRIPTION
1	9-7835-00 Enclosure weldment
2	9-7835-01 Door weldment
3	9-7835-02 Panel, back
4	9-7820-53 Nut, U-type
5	9-7530-60 Screw, thread-forming, #10
6	9-7820-54 Nut, J-type
7	9-7823-62 Bushing
9	9-7824-41 Screw, shoulder 1/2 x 1/2
10	9-7835-10 Limit actuator
11	9-7826-75 Timer box
12	5-7838-15 Switch, limit
13	9-7813-38 Screw, pan-head, 8-32 x 1"
14	9-7818-40 Nut, Keps, 8-32
15	5-7566-90 Timer
16	9-7597-70 Washer, lock, #8
17	9-7826-81 Bumper, door
18	9-7803-81 Screw, round-head, 8-32 x 3/8"

PART NO.	DESCRIPTION
19	9-7835-03 Limit bracket
20	9-7820-55 Washer, ext.-tooth, #10
21	9-7826-01 Timer plate (Model 5300-00-SQ)
22	9-7811-42 Screw, pan hd 10-32 x .50
23	9-7824-43 Timer plate
24	9-7806-33 Lockwasher, #10
25	5-7825-84 Pushbutton, green
26	5-7825-85 Pushbutton, blue
27	5-7824-48 Operation lamp
28	5-7824-45 On / Off switch
29	5-7822-11 Cycle counter
30	9-7803-53 Screw, hex hd 1/4-20 x 1.50
31	9-7824-52 Controller box
32	5-7824-47 Controller unit
33	9-7801-64 Lock washer, 1/4
34	9-6541-00 Nut, hex 1/4-20
35	9-7807-89 Bumper pad
-	9-7829-75 Holder, Insert (Not Shown)

Main Assembly



Main Assembly

PART NO.	DESCRIPTION	PART NO.	DESCRIPTION		
1	9-7835-04	Base weldment, SQ	25	9-7806-33	Washer, lock, #10
2	9-7820-44	Foot, Floor stand	26	9-7813-83	Nut, Nylock, 10-32
3	6-7819-10	Frame weldment	27	9-7812-09	Screw, pan-head, 10-32 x 3/4"
4	9-7825-37	Gear	28	9-7819-20	Bracket, counterweight
5	9-7818-50	Screw, socket-head, 1/4-20 x 1"	29	9-7819-39	Bolt, shoulder, 5/16" x 2"
6	9-7801-64	Washer, lock, 1/4"	30	9-7825-38	Gear
7	5-7824-18	Motor (00, PB)	31	9-7819-05	Block, aluminum
7	5-7822-05	Motor (E1)	32	6-7819-07	Shaft, drive, can
8	9-5617-00	Screw, hex-head, 5/16-18 x 1"	33	9-7835-41	Tab, spring SQ
9	9-4961-00	Nut, hex, 5/16-18	34	9-7829-45	Universal Can Holder
10	9-7605-21	Washer, lock, 5/16"	35	9-7819-63	Screw, set, 10-24 x 3/4"
11	9-1000-23	Washer, flat, 5/16"	36	9-7808-86	Bolt, 3/8-16 x 1"
12	9-7819-29	Isolator, rubber	37	9-7803-81	Screw, 8-32 x 3/8"
13	9-7803-43	Nut, Nylock, 1/4-20	38	9-7597-70	Washer, int.-tooth, #8
14	9-7819-18	Pulley (00, PB)	39	6-2159-73	Wire assembly
14	9-7821-82	Pulley, (E1)	40	9-7818-40	Nut, Keps, 8-32
15	9-7823-89	Pulley, motor	41	9-7835-07	Plate, Weight SQ
16	9-7835-23	Belt	42	9-7818-96	Collar
16	9-7821-81	Belt, (E1)	43	9-7835-09	Middle Frame, Weldment SQ
17	9-7819-03	Bearing	44	9-7834-10	Plate, Universal can holder
18	9-7819-02	Housing, bearing	45	9-7835-05	Screw, Flat head 1/4-20 x 1/2
19	9-7819-06	Shaft, drive	46	9-7835-29	Washer, Nylon
20	9-7819-60	Key, square, 3/16" x 1"	47	9-7815-41	Screw Hex 1/4" x 2 1/4"
21	9-7819-04	Washer, spacer	48	9-7801-83	Screw Hex 1/4" x 1 1/4"
22	9-7819-21	Counterweight	49	9-7843-22	Washer, Spacer- Thin (top washer only)
23	9-7819-61	Screw, pan-head, 10-32 x 2 3/4"			
24	9-7807-49	Washer, flat, #10			

Assemblies

- 6-7820-88 Housing & shaft assembly
Includes bearing #17, bearing housing #18, and drive shaft #19

- 6-7820-89 Block & can drive assembly
Includes bearing #17, aluminum block #31, and can drive shaft #32

- 6-7835-20 SQ Can Holder Assy
Includes #24, #26, #33, #34, #44 and #45



Warranty Terms and Conditions

Equipment Covered Under This Warranty:

1015/5300 Speed Demon® Series, 5400/5410 Series, 5025 Red D Mix™, 5305/5315 Speed Demon 5™ Series, 5990 Multi-Size Shaker, 1025 Red D Mix™

Warranty

Red Devil Equipment Co. warrants equipment manufactured by it and bearing its name to be free from defects in material and workmanship.

Red Devil Equipment Co. will provide replacement parts caused by failure due to production or manufacturing error. Cost of labor and transportation for service of machines under this warranty will also be covered during the warranty period. Normal ground freight will be covered for replacement parts sent within the warranty period for parts and machines. UPS ground or common carrier ground freight will be covered for the return of defective items only.

This warranty applies only when the equipment is installed, operated and maintained in accordance with written Red Devil Equipment Co. instructions as appearing in the owner's manuals.

This warranty does not cover, and Red Devil Equipment Co. shall not be liable for, any malfunction, damage or wear caused by faulty installation, misapplication, abrasion, corrosion, inadequate or improper maintenance, negligence, accident, tampering, or substitution of non-Red Devil Equipment Co. component parts, modification or use for non-intended purpose. Nor shall RDE be liable for malfunction, damage or wear caused by the incompatibility with RDE equipment of structures, accessories, equipment or materials not supplied by RDE.

Disclaimers and Limitations

The terms of this warranty constitute purchaser's sole and exclusive remedy and are in lieu of any other warranties, express or implied. In no case shall Red Devil Equipment Co's liability exceed the amount of the purchase price. Any action for breach of warranty must be brought within 1 year of the date of the sale. ***All warranty repairs must be executed by an RDE Authorized Service Center or warranty will be voided.**

Equipment Not Covered

Equipment not covered by this warranty: Red Devil Equipment Co. makes no warranty, and disclaims all implied warranties of merchantability and fitness for a particular purpose, with respect to accessories, equipment, materials or components sold but not manufactured by RDE.

The items sold, but not manufactured by Red Devil Equipment Co. (such as computers, electric motors, switches, etc.) are subject to the warranty, if any, of their manufacturer. Red Devil Equipment Co. will provide the purchaser with reasonable assistance in making any claim against accessories or components manufactured for breach of these warranties.

Please contact your Red Devil Equipment account representative toll-free at 800-221-1083 for specific questions regarding warranty terms.

Revised: 05/30/06



www.reddevilequipment.com

For sales or service, please contact Customer Service:

**763-533-2969
800-221-1083
763-533-0015 (FAX)**

**RED DEVIL EQUIPMENT CO.
Attn: Customer Service Dept.
14900 21st Ave North
Plymouth, MN 55447**