

D147081

Replacing Door Rails

Corob Evoshake 500

Corob Oy

19.09.2019

RRan

Tools and accessories:



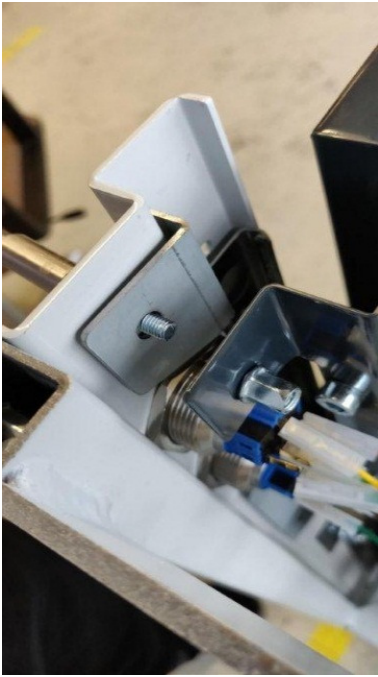
- Battery screw screwdriver
- 1/4' extension bar (magnetic)
- 1/4' tools: T25, T20 and 3mm Hexagon
- 1/4' Wrench tool for bits
- 10mm wrench
- Angular pliers

SCREWS IN OPERATION

- | | |
|---------------------------|------------------------|
| T20 M4x4 | FOR RAIL TO FRONT SIDE |
| T20 M4x6 + washer | RAIL TO DOOR |
| T25 M5x15 | Front panel |
| Flathead screw M6 hex 3mm | GAS SPRING |
| HOSE SLEEVE 8/6-7MM | GAS SPRING |
| FLANGE NUT M6 | |
- Loctite 243 or similar.

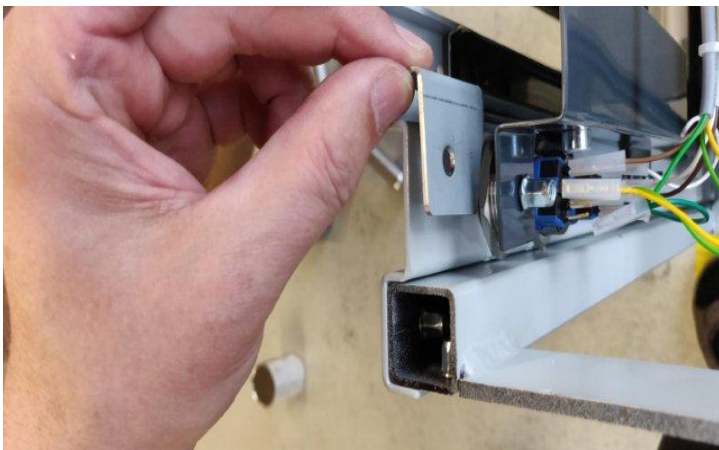


Rails with rubber sleeves



Switch machine off and disconnect mains cable.

Remove upper cover and the right panel (T25)

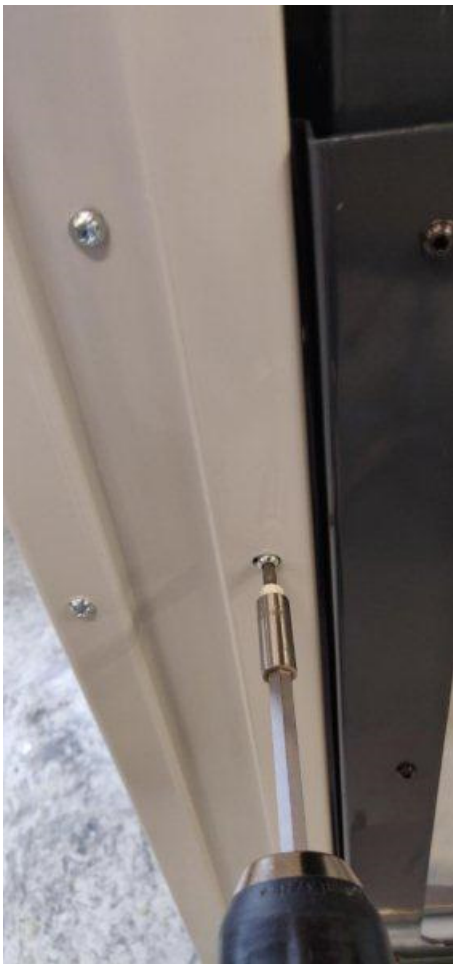


Release front panel (T25) (and supports if mounted)

Remove supports, if they are assembled. They are not needed anymore



Disconnect gas spring upper joint (10mm wrench)



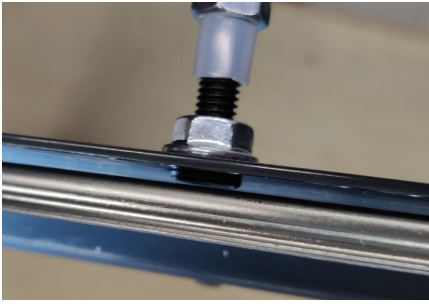
Open rail screws 4pcs (T20)



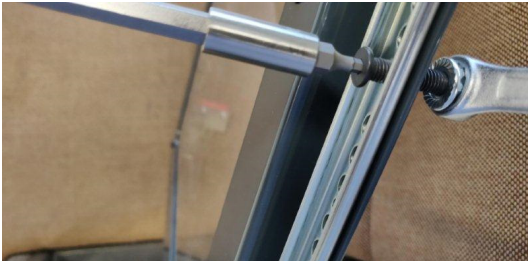
Push front panel back



Lift the door out of the machine



Remove rails from the door (hex 3, 10mm, T20)



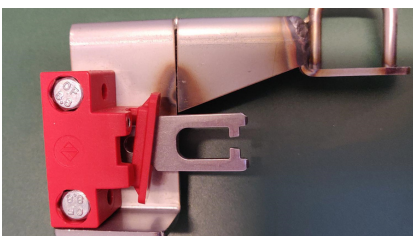
Install flathead M6 screw for gas spring under the right rail



Replace rails with new ones.
Install rail holes and thread holes concentrically
use T20 screws with washers and tight crews. Use Loctite 243



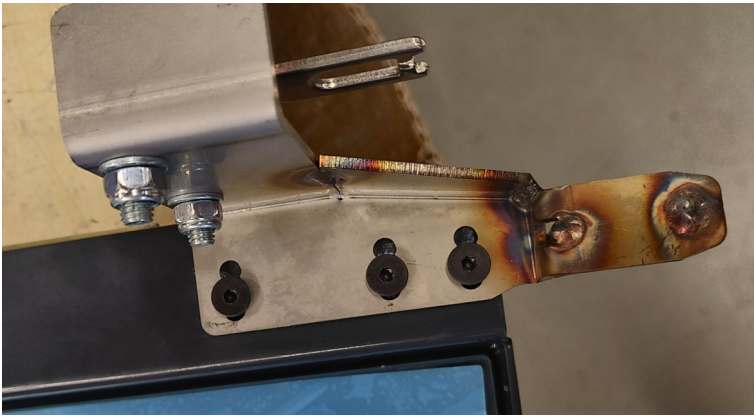
Check from the opposite side, that the end of screws doesn't come out from nuts



Replace the latch of the door lock with a new one.

Remove safety switch key from the old latch. Place the upper edge of the key to the same level with the upper edge of door latch.





Fix the latch to the door. There are four holes for the screw. Use the second one from the left as in the photo. Fix and tight screws. Use Loctite 243



Lift the door back to the machine.

Fix T20 screws for rails. **Do not tighten screws yet.**

Close the door to locked position

Check that door latch is properly in side the lock and safety switch key inside the safety switch. Otherwise machine doesn't work properly. Use Loctite 243



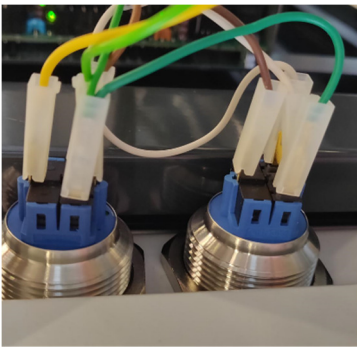
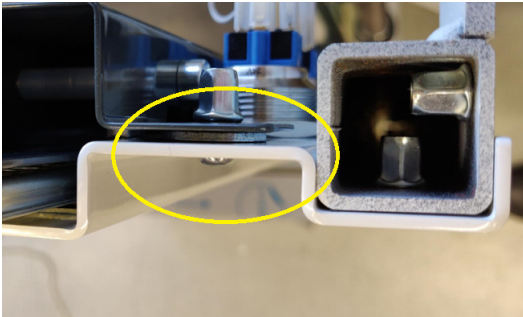
Install gas sprint upper connection. Use plastic hose sleeve and Nyloc nut. Leave nut half a turn open, that gas spring can move a little bit.

Install rail supports and tight front panel.

Install right side panel and top panel and tight panel screws.



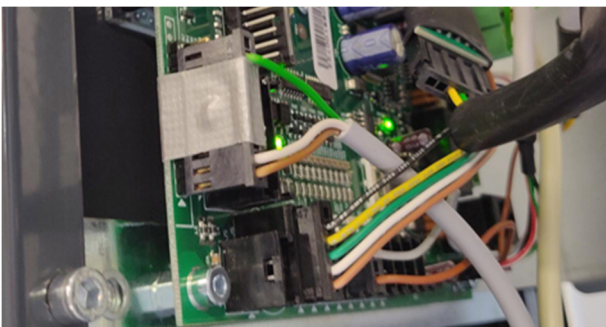
Fix the left & right front panels. Use washers (4 pcs) as it is shown the next picture.



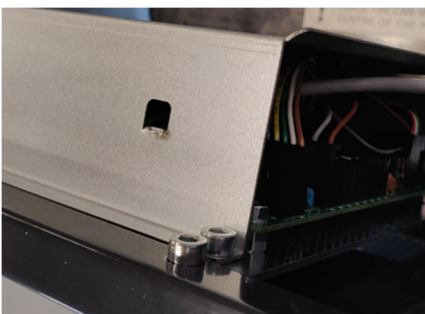
1.

Before installing top cover Check cable connections in the start & Prog. buttons (1.) and in the board (2.). Check the coupling fastened by tape.

Machines which have fold in the board cover (3.), don't need to check.



2.



3.



Put top cover on. Don't fix screws yet.

Tighten the top cover screws.

Tighten the lower screws of both rails.
(yellow)

Open door lock, let the door slide up and
tighten the upper screws (red).

Check, that door moves softly by moving
the door up and down. Adjust rails if
needed by loosening upper screws of rails
and adjust a little rail location, when the
door is lifted to top position

Connect main power cable and switch
machine on.

When power is on and machine is ready to
shake:

Test the door functioning by closing and
opening it a couple of times.

Check functioning of Stop & Prog buttons.

Drive cleaning function.

Drive automatic prog. with canister.

If machine doesn't work, check
connections of Start & Prog. buttons and
board.

Check safety switch and door lock.