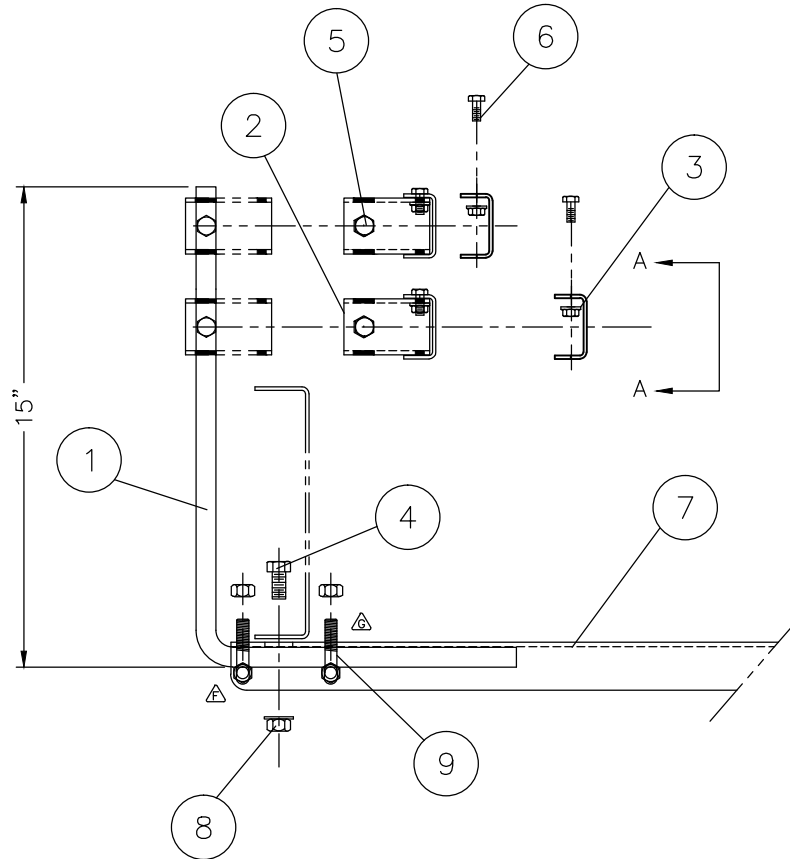
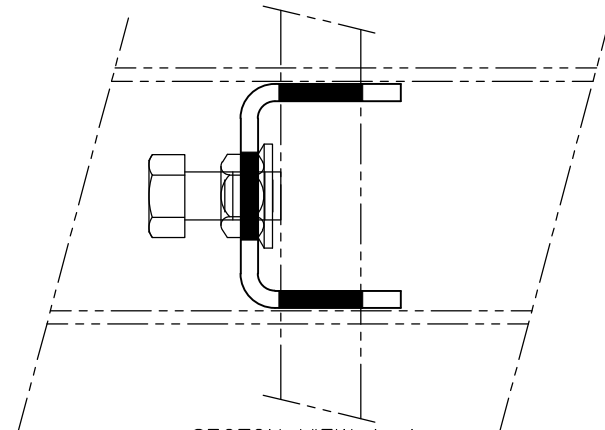


NOTE:
 2' SECT TO 10' SECT
 USES (2) MTG ANGLES
 SHORTER SECTIONS USE ONLY (1)

DWG #	HARDWARE LIST #
B22209	161
B22207	14
B22256	168




ITEM	DESCRIPTION	DRAWING
1	ADJUSTABLE CHANNEL "L" ROD	B22296-00-000H
2	ACGR MTG CHAN	B22256-00-000H
3	1/4"-20 ZN SERRATED FLANGE NUT	23-293
4	3/8"-16 X 3/4" GR#2 ZN HHCS	23-400
5	3/8"-16 X 1" GR#2 HHCS	23-420
6	1/4"-20 X 5/8" GR#2 ZN HHCS	23-192
7	ADJ CHAN GD RL MTG ANG	23-400
8	3/8"-16 ZN SERRATED FLANGE NUT	23-470
9	ACGR L-ROD MTG BOLT	B22209-00-000H



SECTION VIEW A-A
 SCALE 1":1"

REV.	INT.	DATE	CHANGES	ECO#
H	TB	06/17/16	AD'D HDWR LIST/23-293 WAS 23-315	
F	JGB	07/30/08	UPDATED VIEW TO SHOW NEW MTG AND AND BOLT	8895
E	JGB	06/25/07	B22256 WAS A22041; CRCTD VIEW; ITEM 2 QTY WAS 4 NOW 2	8728
D	CLR	02/20/07	B22205 WAS B22915:;AD'D 23-315	8679
C	TRS	8/10/06	ITEM 5 WAS 23-410	8550
B	CLR	09/27/05	AD'D CHART FOR HARDWARE LIST	8417
A	CLR	08/14/02	RELEASED	

FO No. FAD	TITLE		UNIT
DIST.	ACGR DBL HIGH "L" ROD MTG ASSY		EA
USER	(B22925)		
 UNLIMITED CONVEYOR SYSTEMS, INC. WEST MEMPHIS, ARKANSAS	TOLERANCES: DECIMAL ±0.03125", ANGULAR ±1° UNLESS OTHERWISE SPECIFIED	DATE 06/17/16	NEXT ASSEMBLY B22925-00-000H
	DESIGNED BY:	CHECKED BY: DATE	SCALE 1/4"=1"
DRAWN BY: C.ROOKS	APPROVED BY: DATE	REV. H	DRAWING NUMBER FAD-105