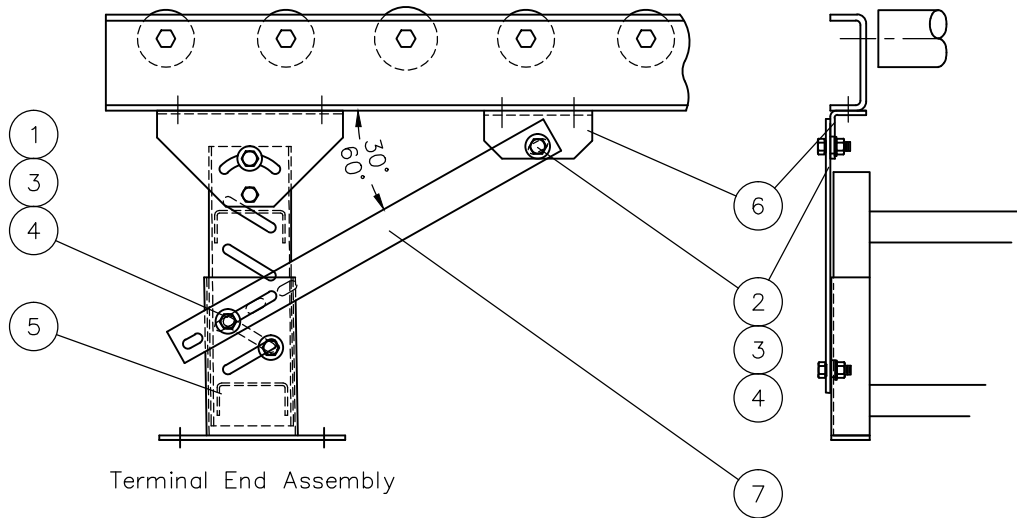


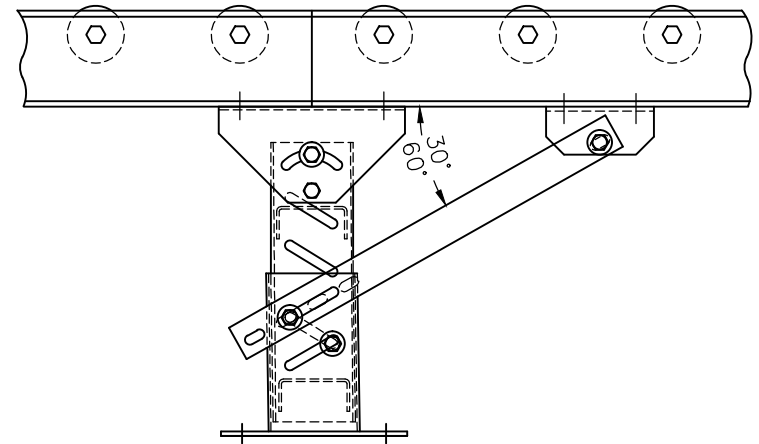
DWG #	HARDWARE LIST #
A22039	20
B17551	47

ITEM	QTY.	DESCRIPTION	DRAWING
1	2	0.375" X .75" LG. BOLT	23-400
2	2	0.375" X 0.875" BOLT	23-410
3	2	0.375" FLAT WASHER	23-430
4	4	0.375" FLANGE NUT	23-470
5	1	STANDARD SUPPORT	
6	2	KNEEBRACE MOUNTING BRACKET	A22039
7	2	KNEEBRACE	B17551



Terminal End Assembly

For optimum affect, kneebrace should bolt to support leg creating an angle between 30 degrees and 60 degrees.



Intermediate Assembly

G	WLC	10/03/06	AD'D INT. ASSY	8577
F	CLR	09/27/05	AD'D CHART FOR HARDWARE LIST	8417
E	CLR	07/01/05	AD'D B17551 DWG # TO B/M	8371
D	CLR	05/29/03	CHGD N/A FIELD FROM A22039 TO B17551	8038
C	BJH	1/17/03	CHANGED HARDWARE LENGTH AND QNTY	7977
B	SW	08/15/02	AD'D PART# 24-836 TO TITLE BLOCK	7912
A	RJW	8/20/96	RELEASED	1799
REV.	INT.	DATE	CHANGES	ECO#

FO No.	TITLE			
DIST.	KNEEBRACE ASSY INSTRUCTIONS 24-836			
USER				
 CCONVEYOR SYSTEMS, INC. WEST MEMPHIS, ARKANSAS	TOLERANCES: DECIMAL ±.03125"	DATE	NEXT ASSEMBLY	
	DESIGNED BY:	CHECKED BY:	DATE	8/20/96
	DRAWN BY:	APPROVED BY:	DATE	SCALE
	R. WILLIAMS			3/16"=1"
		REV.	G	DRAWING NUMBER
				FAD-106