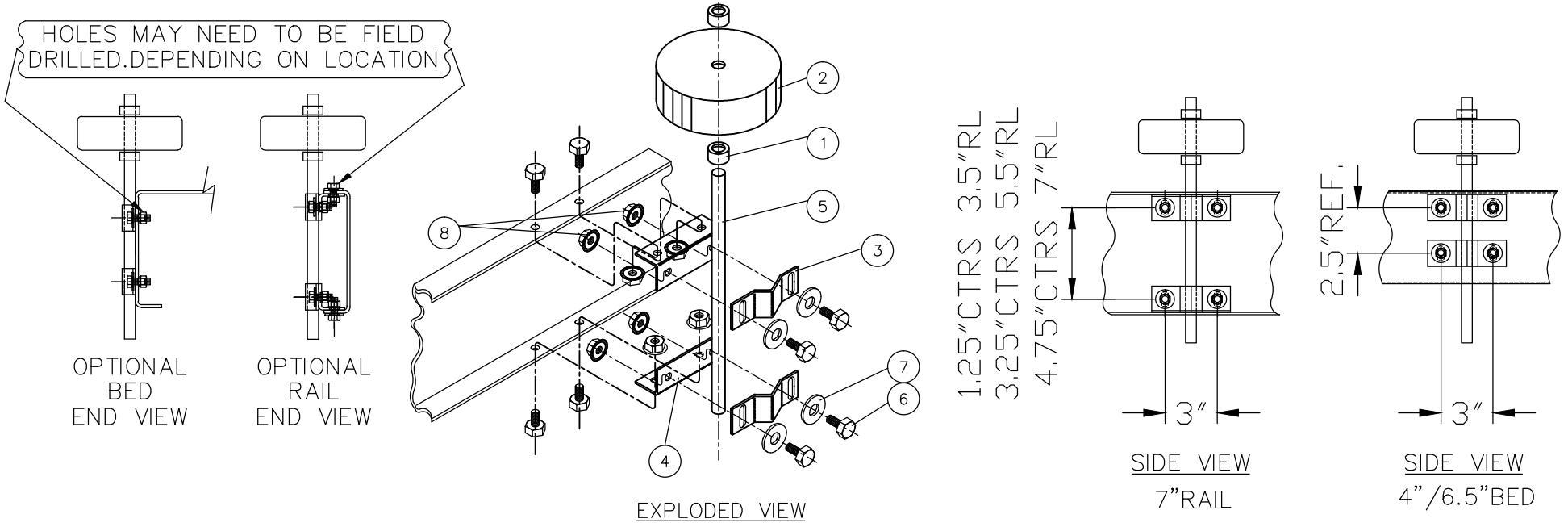



ITEM	DESCRIPTION	ITEM	DESCRIPTION
5	6"D TURN WHL MTG SFT B22986	1	0.625" SET COLLAR 24-012
6	0.375"x0.875"HEX BOLT 23-410	2	6"D TURN WHL 22-010
7	0.375" FLAT WASHER 23-430	3	GD RL MTG BRKT B22848
8	0.375" FLANGE NUT 23-470	4	RL MTG ANG B22987

NOTE: ITEM #4 NOT NEEDED FOR BED MOUNT.



DWG #	HARDWARE LIST #
B22848	30
B22987	7

E	SW	07/03/13	AD'D VIEW FOR RAIL MOUNT		
D	CLR	09/27/05	AD'D CHART FOR HARDWARE LIST	8417	
REV.	INT.	DATE	CHANGES	ECO#	
FO No. STANDARD			TITLE		
DIST.			6" DIA TURNING WHEEL (24-838)		
USER			BED / RAIL MOUNT		
 AUTOMATED CONVEYOR SYSTEMS, INC. WEST MEMPHIS, ARKANSAS			TOLERANCES: DECIMAL $\pm 0.03125"$ , ANGULAR $\pm 1'$ UNLESS OTHERWISE SPECIFIED	DATE 12/04/97	
			DESIGNED BY: D. GOACHER	CHECKED BY: DATE	SCALE 1"=1'
			DRAWN BY: D. GOACHER	APPROVED BY: DATE	REV. E
			NEXT ASSEMBLY B22986-00-000C		
			DRAWING NUMBER FAD-108		