

Service Manual

SERVICE PARTS & DIAGRAMS

BENDPAK

HDS-14X

PRODUCT SKU
5175173

DRAWING N°
5260599

CATEGORY
Four Post Lift

REV
Version H

DATE
08.29.2022



BendPak.

This guide is a troubleshooting reference used for maintaining and servicing your Bend Pak product. It provides comprehensive information on identifying serviceable parts and components and assists in troubleshooting problems and performing assembly /disassembly procedures.

BendPak, Inc. Corporate Office

1645 Lemonwood Drive
Santa Paula, CA 93060 USA
Toll Free US/Canada: 1-800-253-2363
Fax: 1-805-933-9160
info@bendpak.com

Customer Service Desk / Warranty

Customer Service Representatives
Office Tel: 1-805-933-9970
Toll Free US/Canada: 1-800-253-2363
Fax: 1-805-933-9160
customerservice@bendpak.com

Parts Orders

Customer Service Representatives
Office Tel: 1-805-933-9970
Toll Free US/Canada: 1-800-253-2363
Fax: 1-805-933-9160
parts@bendpak.com

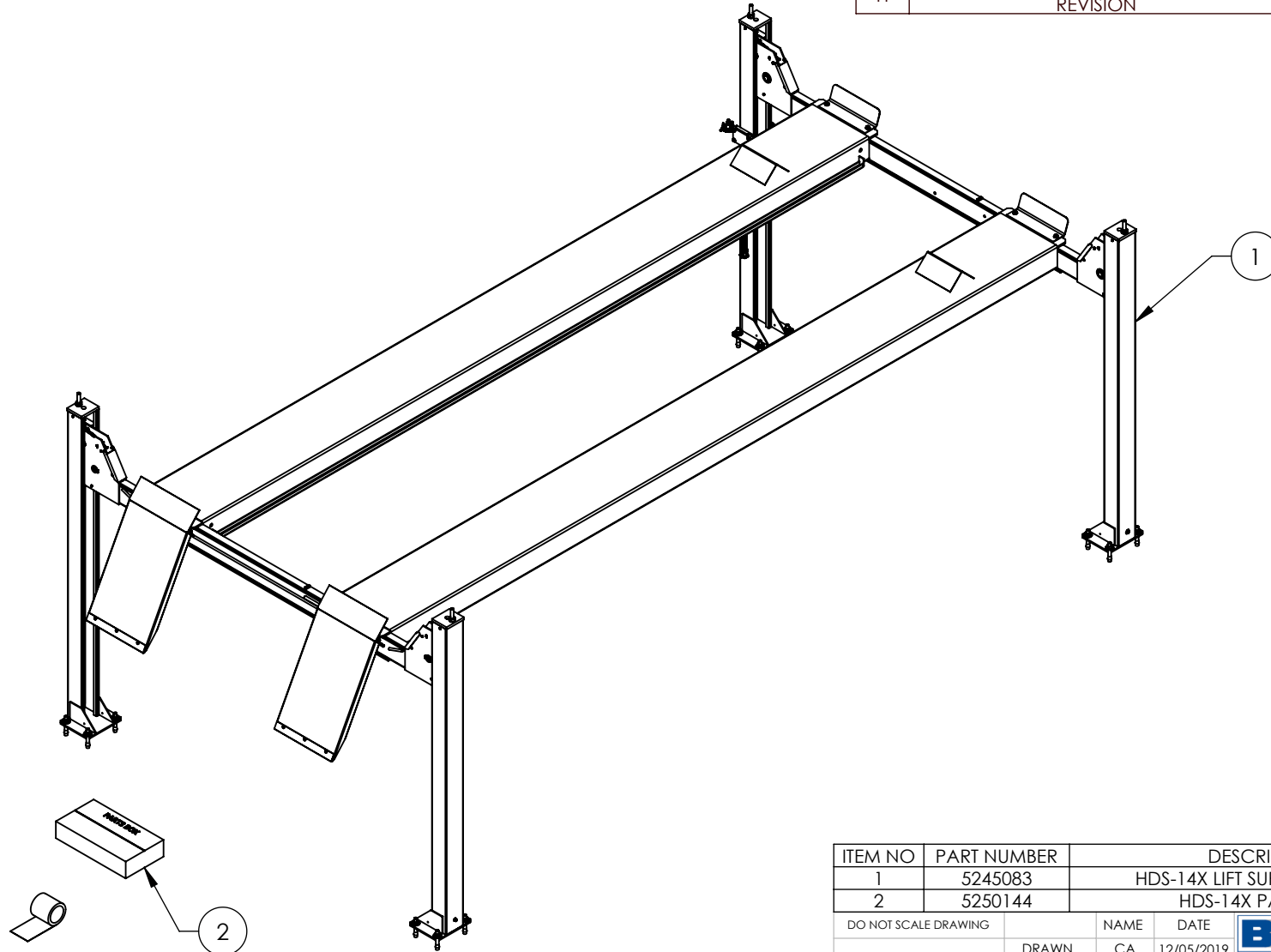
Domestic Sales & Service

USA Sales Representatives
Office Tel: 1-805-933-9970
Toll Free US/Canada: 1-800-253-2363
Fax: 1-805-933-9160
sales@bendpak.com

International Sales & Service

Office Tel: 1-805-933-9970
Exports Dept: 1-805-933-9970 EXT. 192
Ext. Toll Free US/Canada: 1-800-253-2363
Fax: 1-805-933-9160
bpkexports@bendpak.com

REVISION				
REV	DESCRIPTION	DATE	EDITED BY	ECO#
F	REPLACED LABELS WITH COLORS & GRAPHICS NOTE	09/27/2021	TM	01344
G	UPDATED BOM REVISION	05/24/2022	TM	01414
H	WAS 120.6 NOW 102.9, UPDATED BOM REVISION	08/11/2022	TM	01436

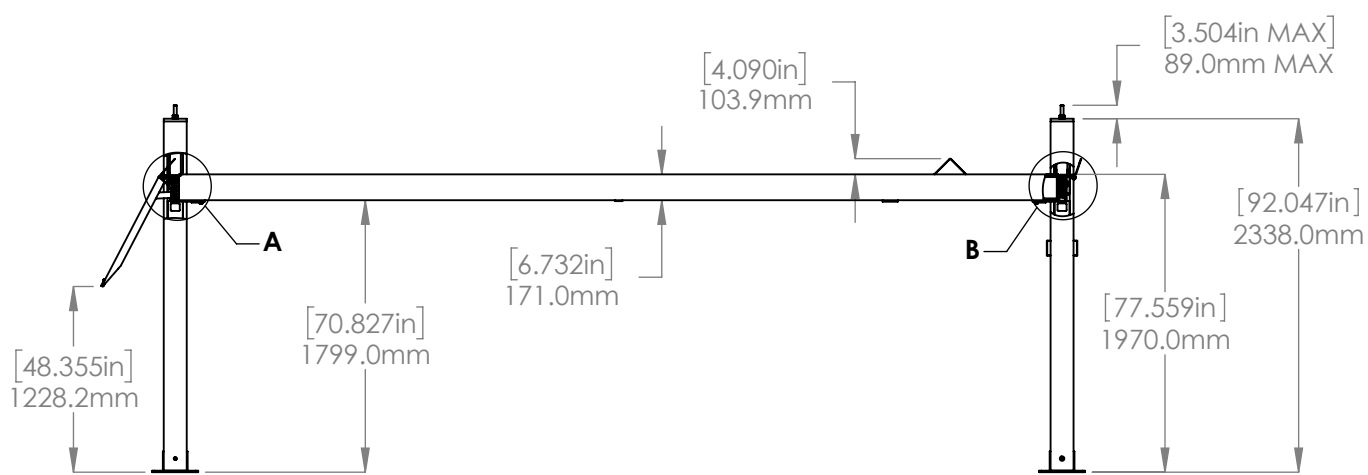
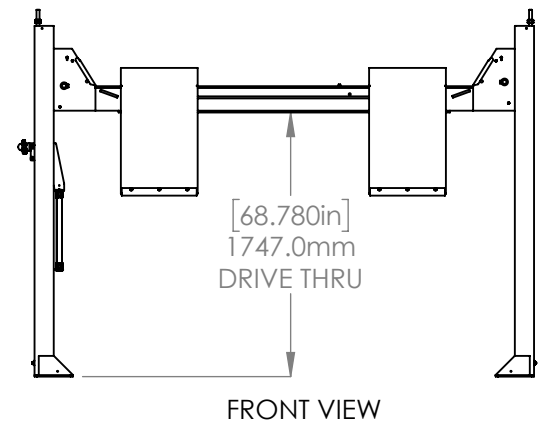
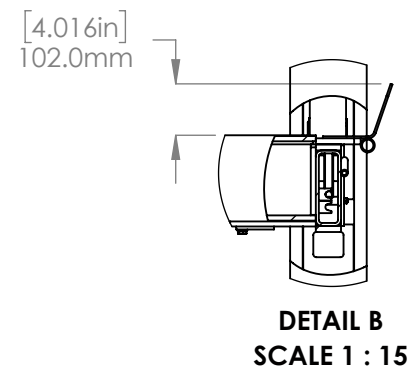
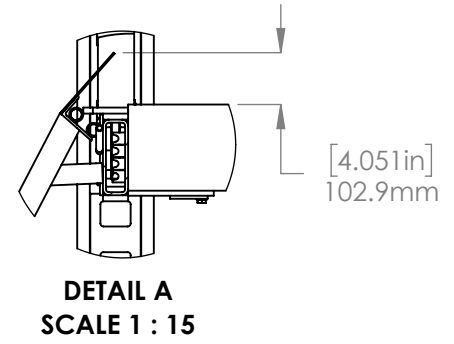
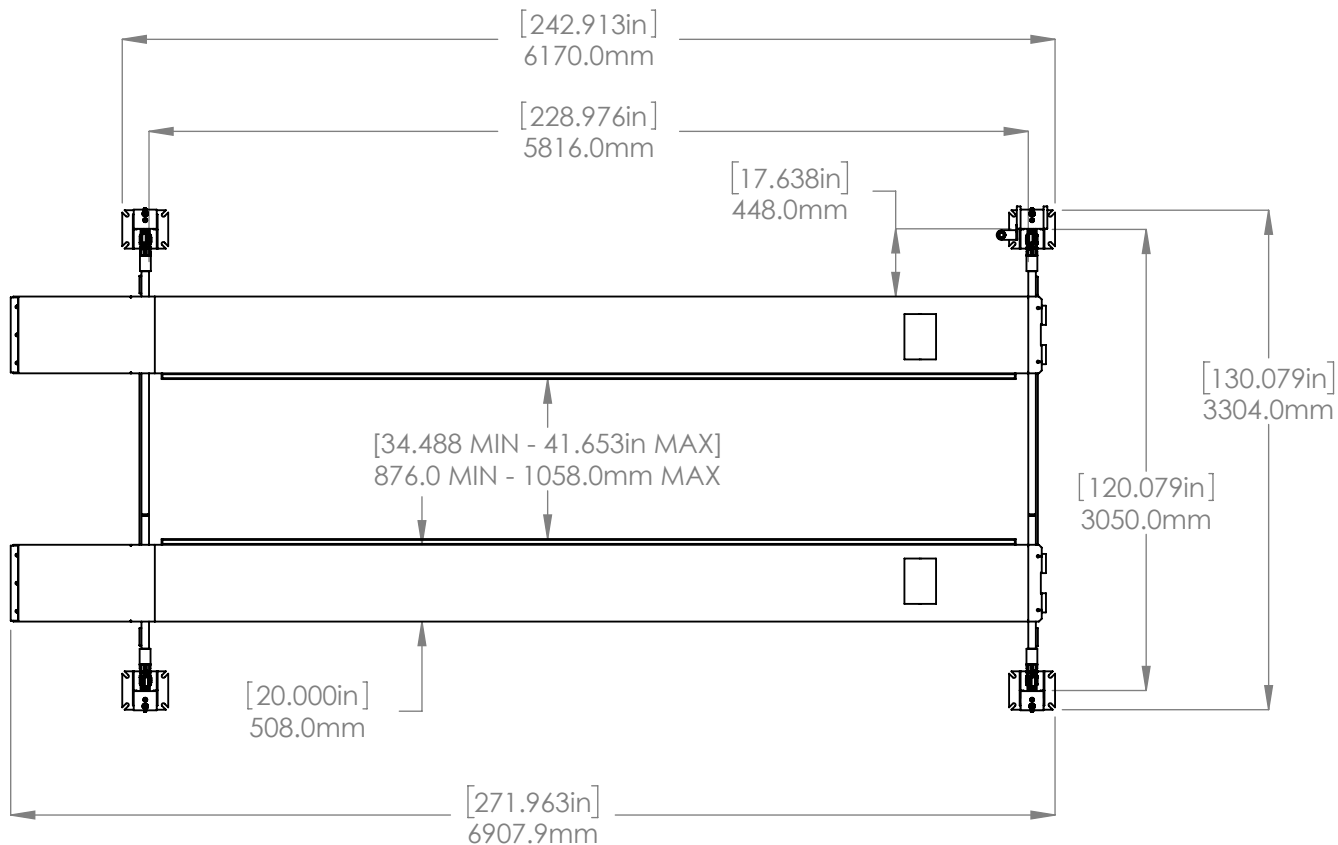


ITEM NO	PART NUMBER	DESCRIPTION	QTY	REV
1	5245083	HDS-14X LIFT SUPERSTRUCTURE	1	F
2	5250144	HDS-14X PARTS BOX	1	M

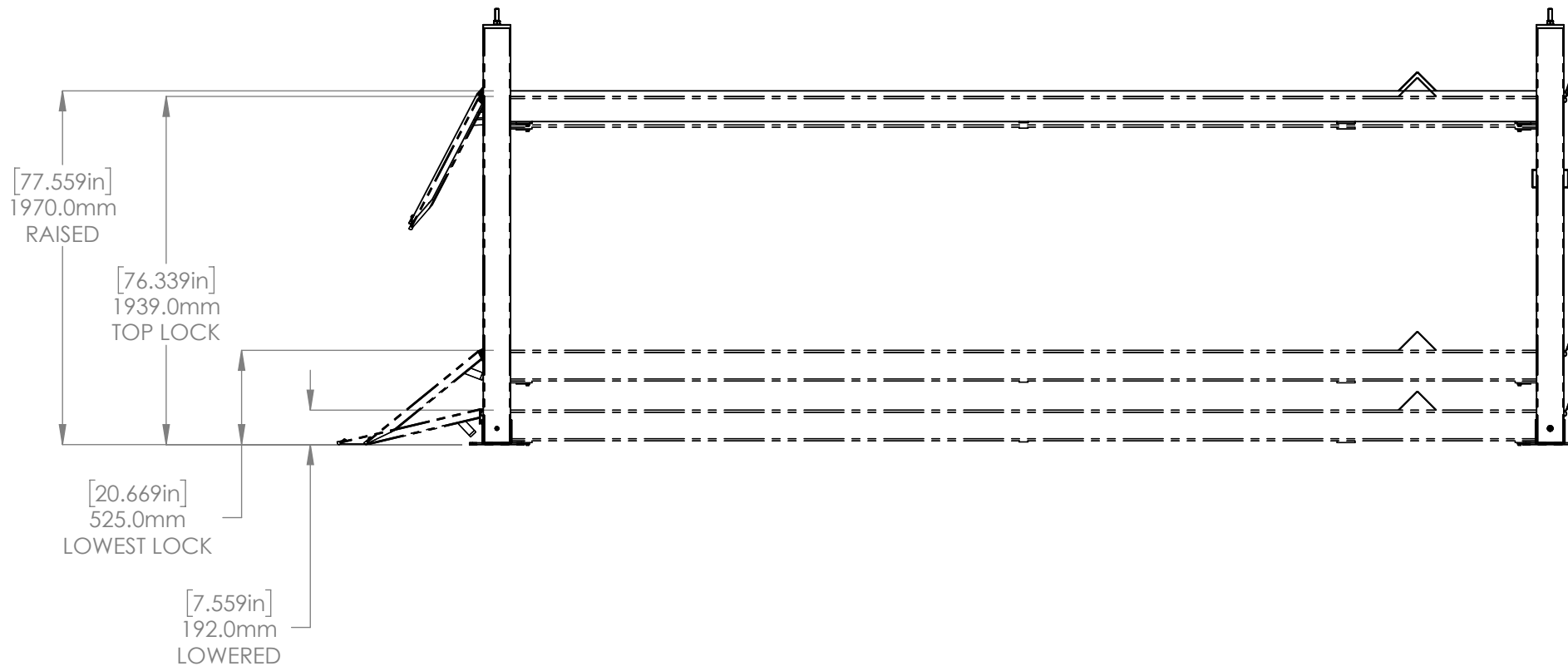
DO NOT SCALE DRAWING	NAME	DATE	 1645 LEMONWOOD DR. SANTA PAULA, CA 93060
DIMENSIONS ARE IN MM	DRAWN	CA 12/05/2019	
	CHECKED	OR 08/16/2022	
	THIRD ANGLE PROJECTION		TITLE: HDS-14X PRODUCTION LIFT VER D (CE CERT)
			SIZE DWG. NO. REV
<small>PROPRIETARY AND CONFIDENTIAL THE INFORMATION CONTAINED IN THIS DRAWING IS THE SOLE PROPERTY OF BENDPAK INC. ANY REPRODUCTION IN PART OR AS A WHOLE WITHOUT THE WRITTEN PERMISSION OF BENDPAK INC. IS PROHIBITED.</small>			A 5260599 H
SCALE: 1:40			SHEET 1 OF 3

NOTE: UNLESS OTHERWISE SPECIFIED.

1. REFER TO MODEL FOR ADDITIONAL INFORMATION
2. SEE SHIPPING INSTRUCTIONS FOR FINAL PACKAGING
3. SEE COLORS & GRAPHICS FOR LABEL PLACEMENT



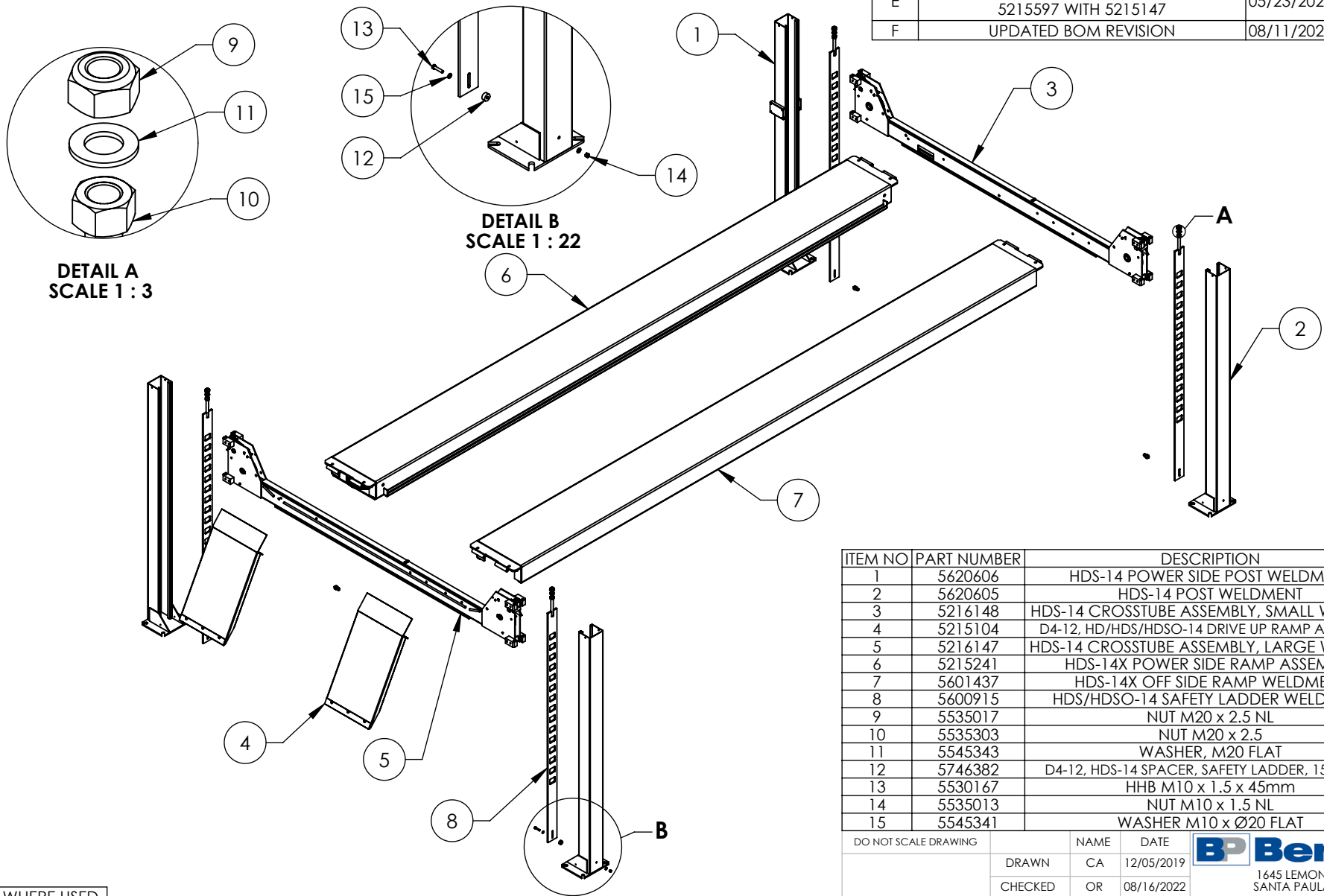
1645 LEMONWOOD DR. SANTA PAULA, CA 93060		
TITLE: HDS-14X PRODUCTION LIFT VER D (CE CERT)		
SIZE DWG. NO.	REV	
A 5260599	H	
SCALE: 1:50		SHEET 2 OF 3



1. DIMENSIONS SHOWN ARE WITH THE LOCK LADDERS ADJUSTED ALL THE WAY UP

1645 LEMONWOOD DR. SANTA PAULA, CA 93060		
TITLE: HDS-14X PRODUCTION LIFT VER D (CE CERT)		
SIZE	DWG. NO.	REV
A	5260599	H
SCALE: 1:35		SHEET 3 OF 3

REVISION				
REV	DESCRIPTION	DATE	EDITED BY	ECO#
D	UPDATED BOM REVISION	08/23/2021	CA	01322
E	REPLACED 5215663 WITH 5215148, 5215597 WITH 5215147	05/23/2022	TM	01414
F	UPDATED BOM REVISION	08/11/2022	TM	01436



DETAIL A
SCALE 1 : 3

DETAIL B
SCALE 1 : 22

ITEM NO	PART NUMBER	DESCRIPTION	QTY	REV
1	5620606	HDS-14 POWER SIDE POST WELDMENT	1	A
2	5620605	HDS-14 POST WELDMENT	3	A
3	5216148	HDS-14 CROSTUBE ASSEMBLY, SMALL WINDOW	1	A
4	5215104	D4-12, HD/HDS/HDSO-14 DRIVE UP RAMP ASSEMBLY	2	J
5	5216147	HDS-14 CROSTUBE ASSEMBLY, LARGE WINDOW	1	A
6	5215241	HDS-14X POWER SIDE RAMP ASSEMBLY	1	U
7	5601437	HDS-14X OFF SIDE RAMP WELDMENT	1	A
8	5600915	HDS/HDSO-14 SAFETY LADDER WELDMENT	4	B
9	5535017	NUT M20 x 2.5 NL	4	-
10	5535303	NUT M20 x 2.5	4	-
11	5545343	WASHER, M20 FLAT	4	-
12	5746382	D4-12, HDS-14 SPACER, SAFETY LADDER, 15mm LG	4	A
13	5530167	HHB M10 x 1.5 x 45mm	4	-
14	5535013	NUT M10 x 1.5 NL	4	-
15	5545341	WASHER M10 x Ø20 FLAT	8	-

WHERE USED
HDS-14X

NOTE: UNLESS OTHERWISE SPECIFIED.

- REFER TO MODEL FOR ADDITIONAL INFORMATION
- SEE SHIPPING INSTRUCTIONS FOR FINAL PACKAGING
- THREAD M20 HARDWARE ONTO LADDER BOLTS AS SHOWN

NEXT ASSEMBLY
5260599

DO NOT SCALE DRAWING

NAME	DATE
DRAWN CA	12/05/2019
CHECKED OR	08/16/2022



1645 LEMONWOOD DR.
SANTA PAULA, CA 93060

DIMENSIONS ARE IN MM

THIRD ANGLE PROJECTION



PROPRIETARY AND CONFIDENTIAL
THE INFORMATION CONTAINED IN THIS DRAWING IS
THE SOLE PROPERTY OF BENDPAK INC. ANY
REPRODUCTION IN PART OR AS A WHOLE WITHOUT
THE WRITTEN PERMISSION OF BENDPAK INC. IS
PROHIBITED.

TITLE: HDS-14X LIFT
SUPERSTRUCTURE

SIZE DWG. NO.

A 5245083

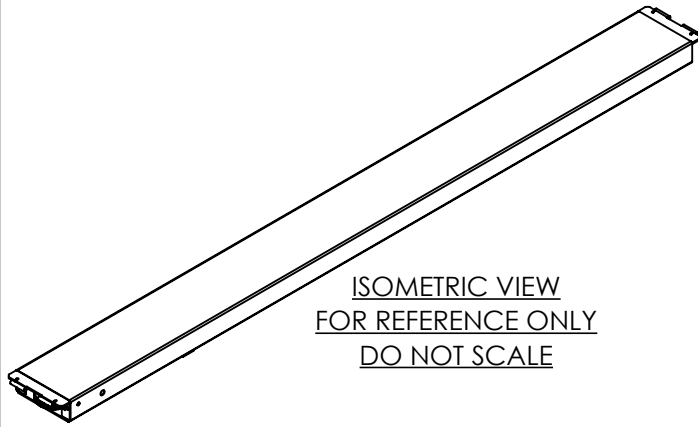
REV

F

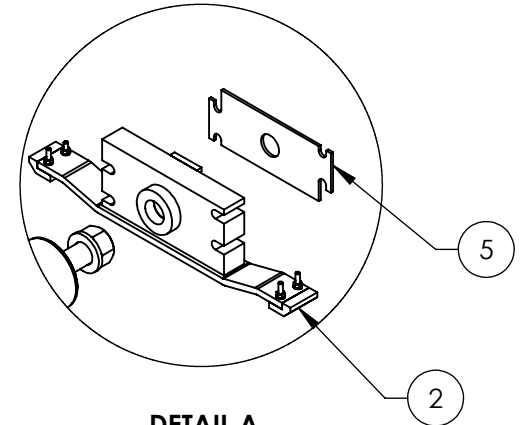
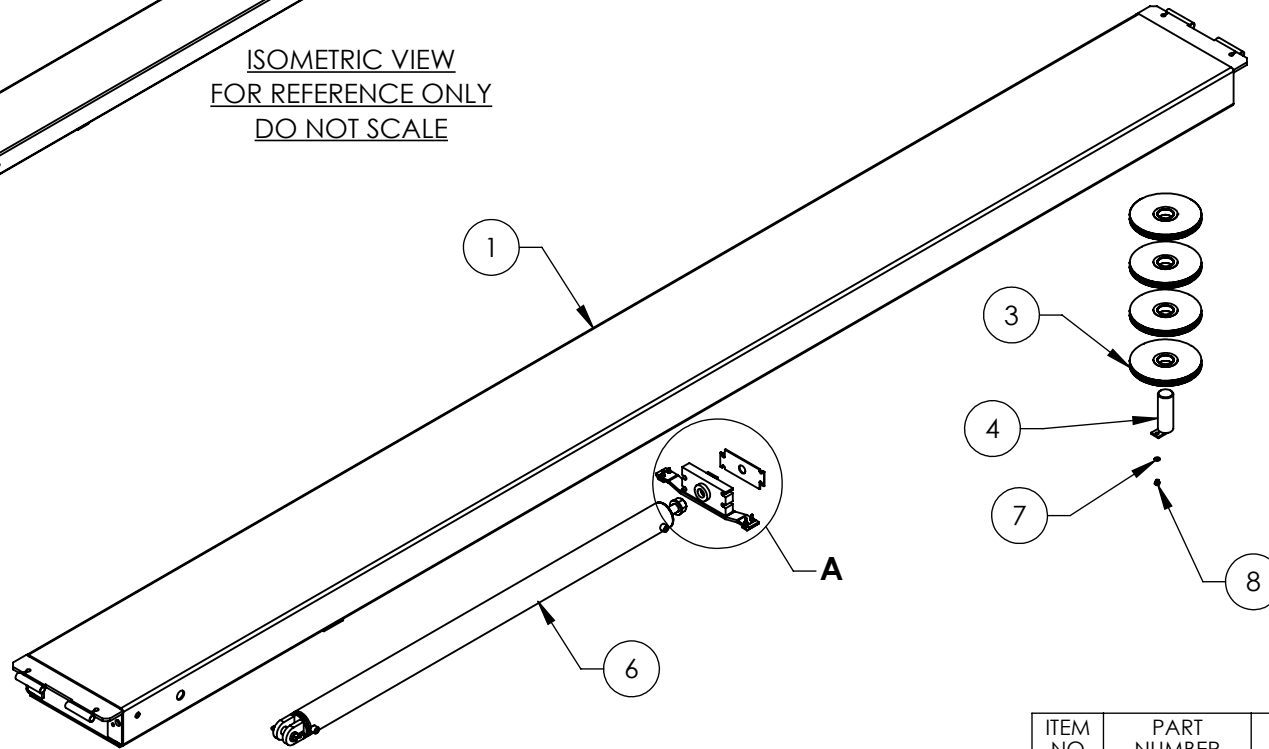
SCALE: 1:45

SHEET 1 OF 1

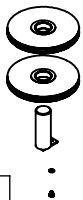
REVISION				
REV	DESCRIPTION	DATE	EDITED BY	ECO#
R	UPDATED BOM REVISION	03/16/2018	TM	00927
T	UPDATED BOM REVISION	11/05/2020	CA	01227
U	REPLACED (1) 5620244 AND (1) 5620245 WITH 5600260	08/23/2021	CA	01322



ISOMETRIC VIEW
FOR REFERENCE ONLY
DO NOT SCALE



DETAIL A
SCALE 1 : 10



WHERE USED
HDS-14X

NOTE: UNLESS OTHERWISE SPECIFIED.

- REFER TO MODEL FOR ADDITIONAL INFORMATION
- VERIFY CYLINDER PORTS ARE CAPPED OFF WITH STEEL 3/8" NPT PLUG
- SEE SHIPPING INSTRUCTIONS FOR FINAL PACKAGING
- ASSEMBLE ITEMS AS SHOWN

ITEM NO	PART NUMBER	DESCRIPTION	QTY	REV
1	5600268	HDS-14X POWER SIDE RAMP WELDMENT	1	E
2	5215664	HDS/HDSO-14 CYLINDER FLANGE ARM ASSEMBLY	1	C
3	5215015	HDS-14 SERIES RAMP SHEAVE ASSEMBLY	6	C
4	5600260	HDS/HDSO-14 SHEAVE PIN WELDMENT	2	C
5	5736821	HDS-14 CABLE RETAINER PLATE	1	A
6	5502110	CYLINDER ASSEMBLY Ø3.5 x 70	1	K
7	5545341	WASHER M10 x Ø20 FLAT	2	--
8	5530281	HHB M10 x 1.5 x 10	2	--

DO NOT SCALE DRAWING

NAME DATE

DRAWN GJZ 11/26/2008

CHECKED OR 09/15/2021



1645 LEMONWOOD DR.
SANTA PAULA, CA 93060

DIMENSIONS ARE IN MM

THIRD ANGLE PROJECTION



TITLE: HDS-14X POWER SIDE RAMP ASSEMBLY

SIZE DWG. NO.

A 5215241

REV

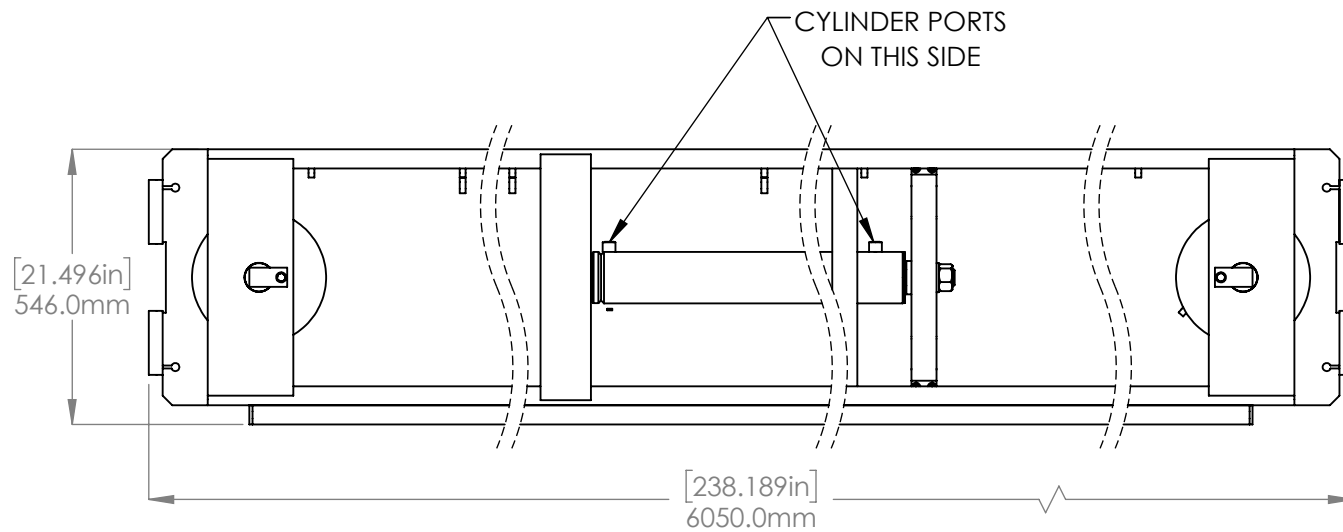
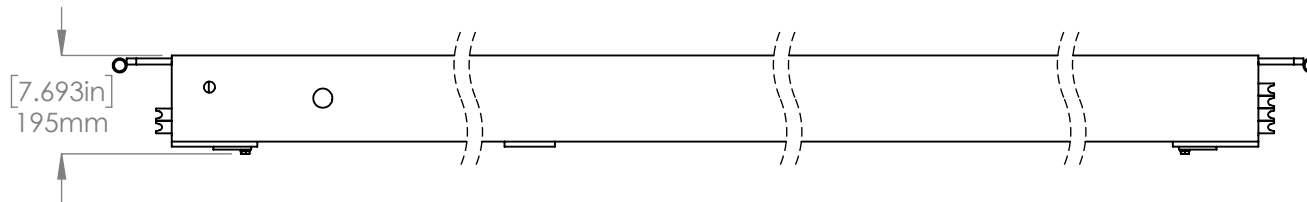
U

NEXT ASSEMBLY
5245083

PROPRIETARY AND CONFIDENTIAL
THE INFORMATION CONTAINED IN THIS DRAWING IS THE SOLE PROPERTY OF BENDPAK INC. ANY REPRODUCTION IN PART OR AS A WHOLE WITHOUT THE WRITTEN PERMISSION OF BENDPAK INC. IS PROHIBITED.

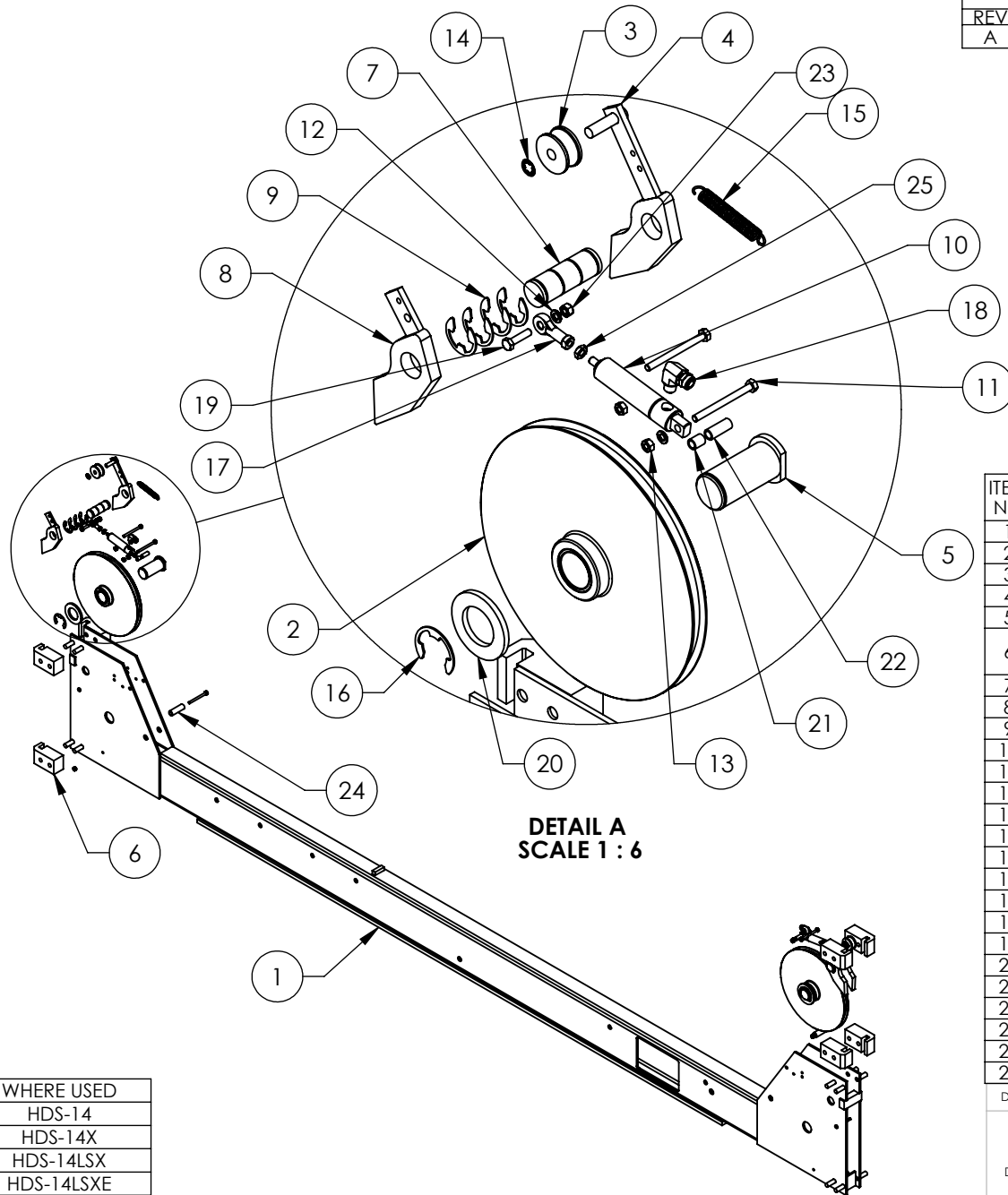
SCALE: 1:28

SHEET 1 OF 2



1645 LEMONWOOD DR. SANTA PAULA, CA 93060		
TITLE: HDS-14X POWER SIDE RAMP ASSEMBLY		
SIZE	DWG. NO.	REV
A	5215241	U
SCALE: 1:15		SHEET 2 OF 2

REV	DESCRIPTION	REVISION	DATE	EDITED BY	ECO#
A	PRODUCTION RELEASE, DERIVED FROM 521.5597		04/28/2022	TM	01414



ITEM NO	PART NUMBER	DESCRIPTION	QTY	REV
1	5601814	HDS-14 CROSSTUBE WELDMENT, LARGE WINDOW	1	A
2	5215013	HDS-14 CROSSTUBE SHEAVE ASSEMBLY	2	B
3	5575380	D4-12, HD/HDS/HDSO-14 SAFETY ROLLER	2	C
4	5600044	4 POST LIGHT DUTY SLACK SAFETY WELDMENT	2	F
5	5600173	D4-12, HD/HDS/HDSO-14 SHEAVE PIN WELDMENT	2	G
6	5716005	D4-12, HD-7/7500/9/14/HDSO-14 POLYETHYLENE SLIDE BLOCK	8	M
7	5746008	D4-12, HD/HDS-7/7500/9/14, HDSO-14 SAFETY PIN	2	D
8	5600760	D4-12, HD/HDS LIGHT DUTY SAFETY WELDMENT	2	C
9	5540275	E RING Ø25mm OD DIN 6799 0250	8	-
10	5502195	AIR CYLINDER, Ø19mm x 25 STROKE	2	-
11	5530005	HHB M6 x 1 x 70	6	-
12	5545005	WASHER, M6 x 12mm FLAT	4	-
13	5535112	NUT M6 x 1.0	4	-
14	5505030	PUSH-ON CLIP Ø10mm SS	2	-
15	5540065	SPRING Ø13mm x 90mm, SLACK SAFETY	2	A
16	5540002	E RING Ø1.375" OD TRUARC X5133-137	2	-
17	5505625	FEMALE ROD END M6 x 33	2	-
18	5550087	FTG ELB -04 COMP x -02 NPT	2	-
19	5530756	HHB M6 x 1.0 x 25mm	2	-
20	5545032	WASHER M36 x 66 FLAT	2	-
21	5755136	AIR CYLINDER SPACER 12mm	2	A
22	5755137	AIR CYLINDER SPACER 25mm	2	A
23	5535357	NUT M6 x 1.0 NL	4	-
24	5755157	D4-12, HD-7/7500/9 CROSSTUBE SPACER Ø16 x Ø10 x 50	2	A
25	5535230	NUT 1/4-28 JN	2	-

DETAIL A
SCALE 1 : 6

WHERE USED
HDS-14
HDS-14X
HDS-14LSX
HDS-14LSXE

NOTE: UNLESS OTHERWISE SPECIFIED.

- REFER TO MODEL FOR ADDITIONAL INFORMATION
- SEE SHIPPING INSTRUCTIONS FOR FINAL PACKAGING
- ASSEMBLE ITEMS AS SHOWN

NEXT ASSEMBLY
5245082
5245083
5245084
5245085

DO NOT SCALE DRAWING

NAME	DATE
DRAWN TM	04/28/2022
CHECKED	

DIMENSIONS ARE IN MM



THIRD ANGLE PROJECTION



PROPRIETARY AND CONFIDENTIAL
THE INFORMATION CONTAINED IN THIS DRAWING IS THE SOLE PROPERTY OF BENDPAK INC. ANY REPRODUCTION IN PART OR AS A WHOLE WITHOUT THE WRITTEN PERMISSION OF BENDPAK INC. IS PROHIBITED.



1645 LEMONWOOD DR.
SANTA PAULA, CA 93060

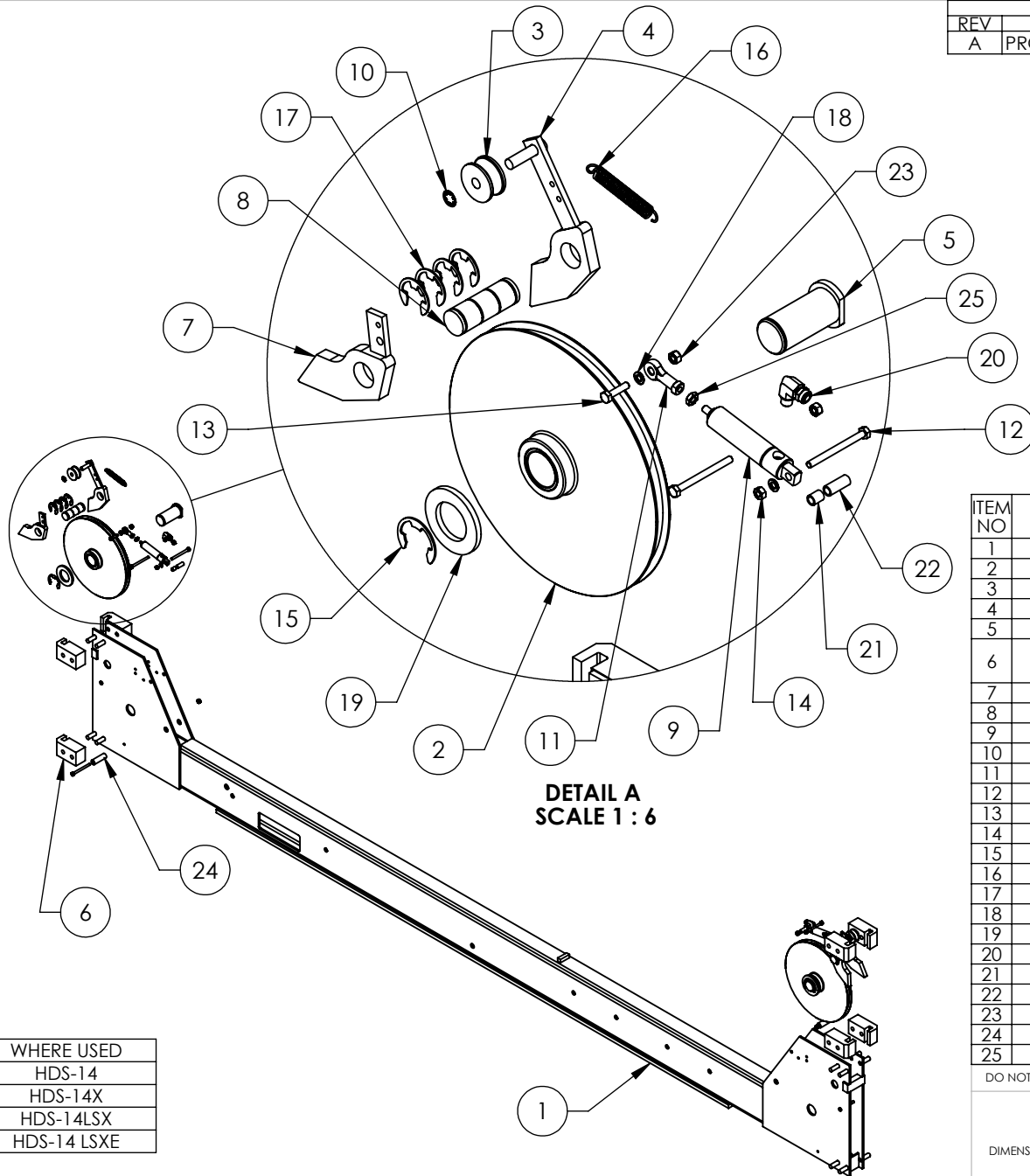
TITLE: HDS-14 CROSSTUBE ASSEMBLY, LARGE WINDOW

SIZE DWG. NO. REV
A 5216147 A

SCALE: 1:20

SHEET 1 OF 1

REV	DESCRIPTION	REVISION	DATE	EDITED BY	ECO#
A	PRODUCTION RELEASE, DERIVED FROM 5215663		05/02/2023	TM	01414



**DETAIL A
SCALE 1 : 6**

ITEM NO	PART NUMBER	DESCRIPTION	QTY	REV
1	5601826	HDS-14 CROSSTUBE WELDMENT, SMALL WINDOW	1	A
2	5215013	HDS-14 CROSSTUBE SHEAVE ASSEMBLY	2	B
3	5575380	D4-12, HD/HDS/HDSO-14 SAFETY ROLLER	2	C
4	5600044	4 POST LIGHT DUTY SLACK SAFETY WELDMENT	2	F
5	5600173	D4-12, HD/HDS/HDSO-14 SHEAVE PIN WELDMENT	2	G
6	5716005	D4-12, HD-7/7500/9/14/HDSO-14 POLYETHYLENE SLIDE BLOCK	8	M
7	5600760	D4-12, HD/HDS LIGHT DUTY SAFETY WELDMENT	2	C
8	5746008	D4-12, HD/HDS-7/7500/9/14, HDSO-14 SAFETY PIN	2	D
9	5502195	AIR CYLINDER, Ø19mm x 25 STROKE	2	--
10	5505030	PUSH-ON CLIP Ø10mm SS	2	--
11	5505625	FEMALE ROD END M6 x 33	2	--
12	5530005	HHB M6 x 1 x 70	6	--
13	5530756	HHB M6 x 1.0 x 25mm	2	--
14	5535112	NUT M6 x 1.0	2	--
15	5540002	E RING Ø1.375" OD TRUARC X5133-137	2	--
16	5540065	SPRING Ø13mm x 90mm, SLACK SAFETY	2	A
17	5540275	E RING Ø25mm OD DIN 6799 0250	8	--
18	5545005	WASHER, M6 x 12mm FLAT	4	--
19	5545032	WASHER M36 x 66 FLAT	2	--
20	5550087	FTG ELB -04 COMP x -02 NPT	2	--
21	5755136	AIR CYLINDER SPACER 12mm	2	A
22	5755137	AIR CYLINDER SPACER 25mm	2	A
23	5535357	NUT M6 x 1.0 NL	6	--
24	5755157	D4-12, HD-7/7500/9 CROSSTUBE SPACER Ø16 x Ø10 x 50	2	A
25	5535230	NUT 1/4-28 JN	2	--

WHERE USED
HDS-14
HDS-14X
HDS-14LSX
HDS-14 LSXE

NOTE: UNLESS OTHERWISE SPECIFIED.

- REFER TO MODEL FOR ADDITIONAL INFORMATION
- SEE SHIPPING INSTRUCTIONS FOR FINAL PACKAGING
- ASSEMBLE ITEMS AS SHOWN

NEXT ASSEMBLY
5245082
5245083
5245084
5245085

DO NOT SCALE DRAWING

NAME: TM DATE: 05/02/2022

DRAWN: TM

CHECKED:

DIMENSIONS ARE IN MM

THIRD ANGLE PROJECTION

PROPRIETARY AND CONFIDENTIAL
THE INFORMATION CONTAINED IN THIS DRAWING IS THE SOLE PROPERTY OF BENDPAK INC. ANY REPRODUCTION IN PART OR AS A WHOLE WITHOUT THE WRITTEN PERMISSION OF BENDPAK INC. IS PROHIBITED.

BendPak
1645 LEMONWOOD DR.
SANTA PAULA, CA 93060

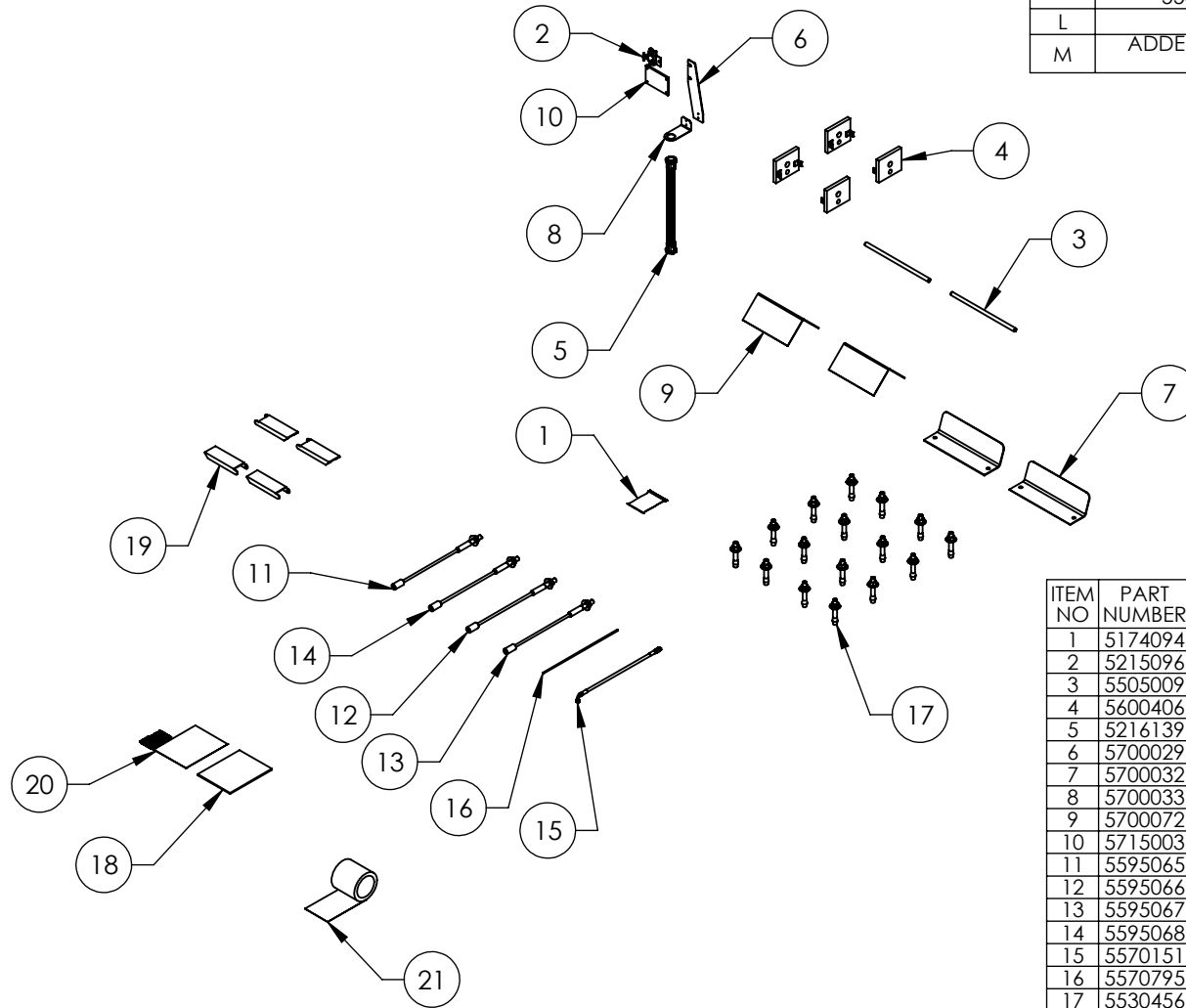
TITLE: HDS-14 CROSSTUBE ASSEMBLY, SMALL WINDOW

SCALE: 1:20

SHEET 1 OF 1

SIZE DWG. NO. A 5216148 REV A

REVISION				
REV	DESCRIPTION	DATE	EDITED BY	ECO#
K	ADDED 5210241, REMOVED 5535011 AND 5545345, UPDATED BOM REVISIONS	07/20/2020	TM	01174
L	UPDATED BOM REVISION	08/19/2021	CA	01322
M	ADDED 5930195, REPLACED 5570050 WITH 5216139	05/04/2022	TM	01414 PRE A



ITEM NO	PART NUMBER	DESCRIPTION	QTY.	REV
1	5174094	D4-12, HD/HDS-14 PARTS BAG	1	G
2	5215096	PUSH BUTTON AIR ASSEMBLY	1	G
3	5505009	D4-12, HD/HDS-14 DRIVE UP RAMP PIN	2	D
4	5600406	HD/HDS-14 TOP PLATE WELDMENT	4	C
5	5216139	FLEX TUBE KIT, UP TO 2000mm	1	A
6	5700029	HD-SERIES FLEX TUBE BRACKET PLATE	1	F
7	5700032	TIRE STOP	2	D
8	5700033	HD-SERIES FLEX TUBE ANGLE	1	E
9	5700072	WHEEL CHOCK	2	B
10	5715003	POWER UNIT VIBRATION DAMPENER	1	B
11	5595065	HDS/HDSO-14 CABLE ASSEMBLY Ø12 x 4100mm ST	1	E
12	5595066	HDS/HDSO-14 CABLE ASSEMBLY Ø12 x 5732mm ST	1	E
13	5595067	HDS-14X/14LSXE CABLE ASSEMBLY Ø12 x 10076mm ST	1	E
14	5595068	HDS-14X/14LSXE CABLE ASSEMBLY Ø12 x 11751mm ST	1	E
15	5570151	HDS-14X HOSE ASSEMBLY Ø6.4 x 4325mm	1	B
16	5570795	1/4" POLY-FLO TUBING	20000mm*	-
17	5530456	AB 3/4" x 4 - 3/4"	16	-
18	5900161	HDS-14/14X INSTALLATION MANUAL	1	-
19	5716629	HDS-14 CROSSTUBE COVER, PLASTIC	4	A
20	5210241	4 POST LIGHT DUTY CE PARTS BAG	1	A
21	5930195	ANTI-SLIP TAPE, 6" x 24ft	1	--

WHERE USED
HDS-14X

NOTE: UNLESS OTHERWISE SPECIFIED.

- SEE SHIPPING INSTRUCTIONS FOR FINAL PACKAGING
- HOSES AND CABLES IN REPRESENTATIONAL FORM
- (*) LENGTHS FOR REFERENCE ONLY

NEXT ASSEMBLY
5260599

DO NOT SCALE DRAWING

NAME DATE
DRAWN TM 05/06/2013
CHECKED

DIMENSIONS ARE IN MM



THIRD ANGLE PROJECTION



PROPRIETARY AND CONFIDENTIAL
THE INFORMATION CONTAINED IN THIS DRAWING IS THE SOLE PROPERTY OF BENDPAK INC. ANY REPRODUCTION IN PART OR AS A WHOLE WITHOUT THE WRITTEN PERMISSION OF BENDPAK INC. IS PROHIBITED.



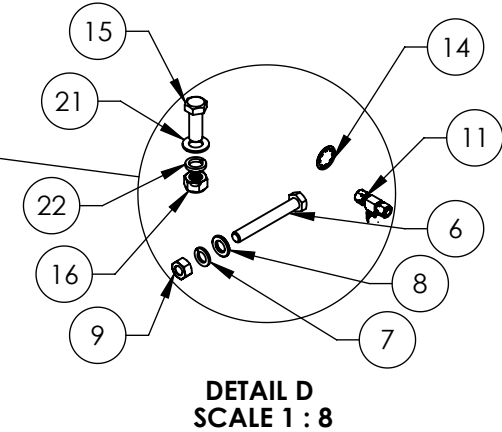
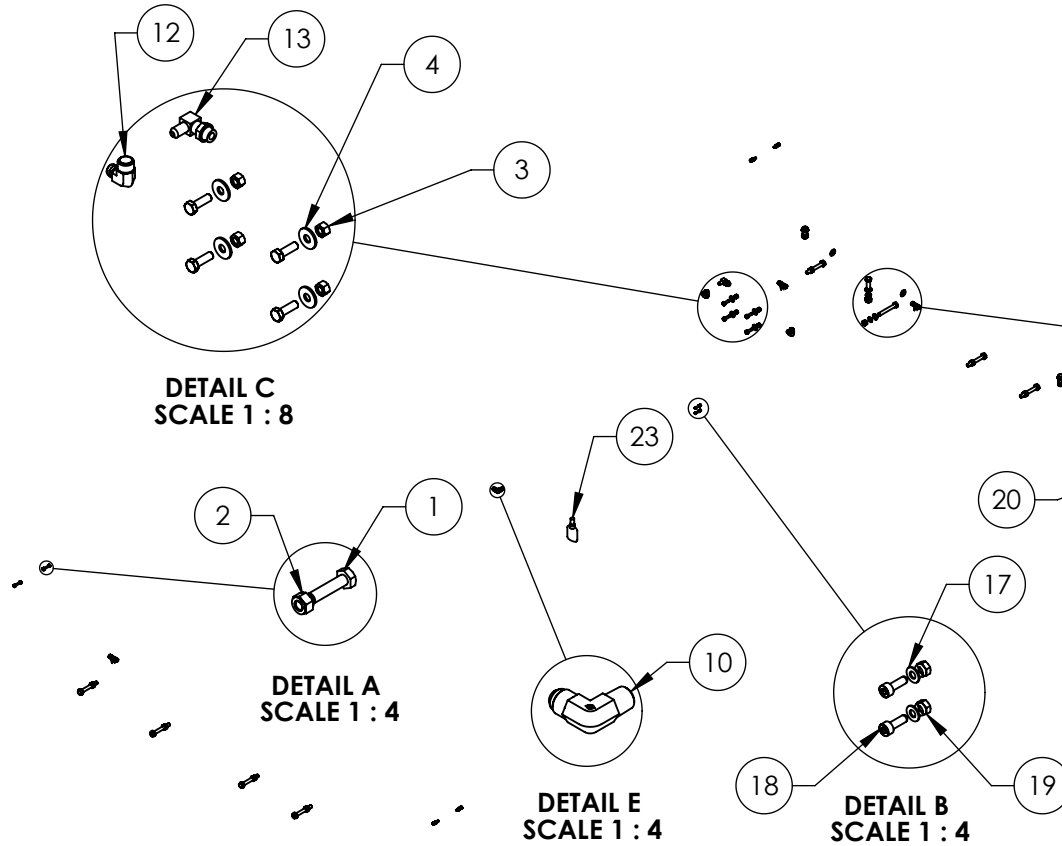
1645 LEMONWOOD DR.
SANTA PAULA, CA 93060

TITLE:
HDS-14X PARTS BOX

SIZE DWG. NO. REV
A 5250144 M

SCALE: 1:35 SHEET 1 OF 1

REVISION				
REV	DESCRIPTION	DATE	EDITED BY	ECO#
E	REPLACED 5550004 WITH 5550089, 5550489 WITH 5550395, UPDATED NEXT ASSEMBLIES	10/29/2013	TM	00593
F	ADDED (4) 5530009, (4) 5545201, (4) 5545347, (4) 5535354, 5550025, 5550026, AND 5580012	11/25/2019	TM	01120
G	REMOVED 5550025 AND 5550026	08/18/2021	CA	01322



ITEM NO	PART NUMBER	DESCRIPTION	QTY	REV
1	5530756	HHB M6 x 1.0 x 25mm	8	-
2	5535357	NUT M6 x 1.0 NL	8	-
3	5535001	NUT M8 x 1.25 NL	4	-
4	5545340	WASHER M8 x 24 FLAT	4	-
5	5530010	HHB M8 x 1.25 x 25mm ZPL	4	-
6	5530009	HHB M12 x 1.75 x 90 CLR.8	8	-
7	5545201	WASHER, M12 SPRING LOCK	8	-
8	5545347	WASHER, M12 FLAT WASHER	8	-
9	5535354	NUT, M12 x 1.75	8	-
10	5550106	FTG ELB -04JIC x 3/8" NPT	1	-
11	5550395	FTG TEE -04 COMP x -04 COMP x -04 COMP	3	-
12	5550089	FTG ELB -04 COMP x -06 NPT	2	-
13	5550008	FTG ELB -04 JIC -06L ORB	1	-
14	5505032	ROTOR CLIP Ø18mm SS	4	-
15	5530107	HHB M14 x 2.0 x 40	4	-
16	5535107	NUT M14 x 2.0 NL	4	-
17	5545009	WASHER, M4 x 9mm FLAT	2	-
18	5530008	SHCS M4 x 0.7 x 12 BOC	2	-
19	5535010	NUT M4 X 0.7 NL	2	-
20	5545535	C WASHER SHIM FOR LIFTS	20	-
21	5545010	WASHER M14 x 28 FLAT	4	-
22	5545349	WASHER M14 x 22 SL	4	-
23	5580012	LIQUID PTFE THREAD SEALANT 50ml	1	-

WHERE USED
HD-14T
HDS-14 SERIES
D4-12 SERIES

NOTE: UNLESS OTHERWISE SPECIFIED.

- REFER TO MODEL FOR ADDITIONAL INFORMATION
- SEE SHIPPING INSTRUCTIONS FOR FINAL PACKAGING

NEXT ASSEMBLY
5250143
5250144
5250191
5250194
5250195
5250294
5250295

DO NOT SCALE DRAWING

NAME	DATE
DRAWN AC	08/08/2008
CHECKED OR	09/21/2021



1645 LEMONWOOD DR.
SANTA PAULA, CA 93060

DIMENSIONS ARE IN MM



THIRD ANGLE PROJECTION



PROPRIETARY AND CONFIDENTIAL
THE INFORMATION CONTAINED IN THIS DRAWING IS THE SOLE PROPERTY OF BENDPAK INC. ANY REPRODUCTION IN PART OR AS A WHOLE WITHOUT THE WRITTEN PERMISSION OF BENDPAK INC. IS PROHIBITED.

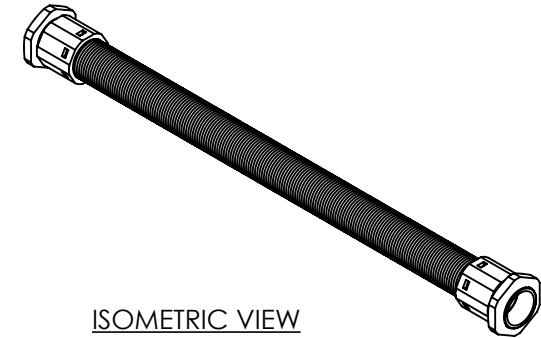
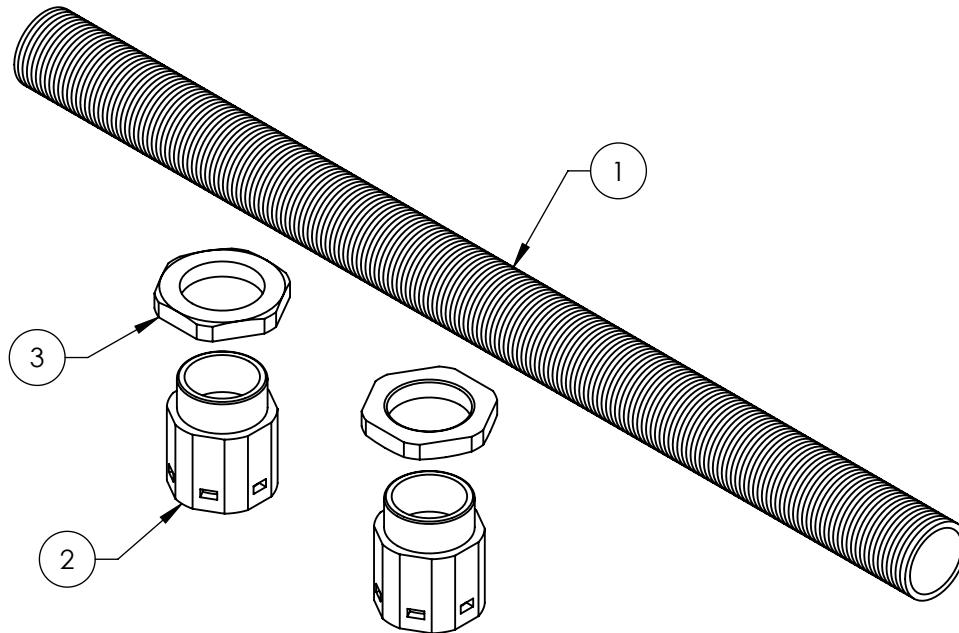
TITLE: D4-12, HD/HDS-14 PARTS BAG

SIZE DWG. NO.	REV
A 5174094	G

SCALE: 1:30

SHEET 1 OF 1

REVISION				
REV	DESCRIPTION	DATE	EDITED BY	ECO#
A	PRODUCTION RELEASE, DERIVED FROM 5570050, 5570052, 5570239	05/05/2022	TM	01414 PRE A



ISOMETRIC VIEW
FOR REFERENCE ONLY
DO NOT SCALE

WHERE USED
D4-12 SERIES
HD-14T
HD-7500 SERIES
HD-7W
HD-7P
HD-9 SERIES
HD-973 SERIES
HDS-14 SERIES
HDSO-14 SERIES
HDS-18/27/40 SERIES

NEXT ASSEMBLY		
5250058	5250175	5250289
5250059	5250184	5250290
5250079	5250185	5250294
5250081	5250187	5250295
5250082	5250188	5250336
5250143	5250189	5250337
5250144	5250191	5250338
5250164	5250193	5250349
5250167	5250194	5250364
5250168	5250195	
5250169	5250278	
5250172	5250286	

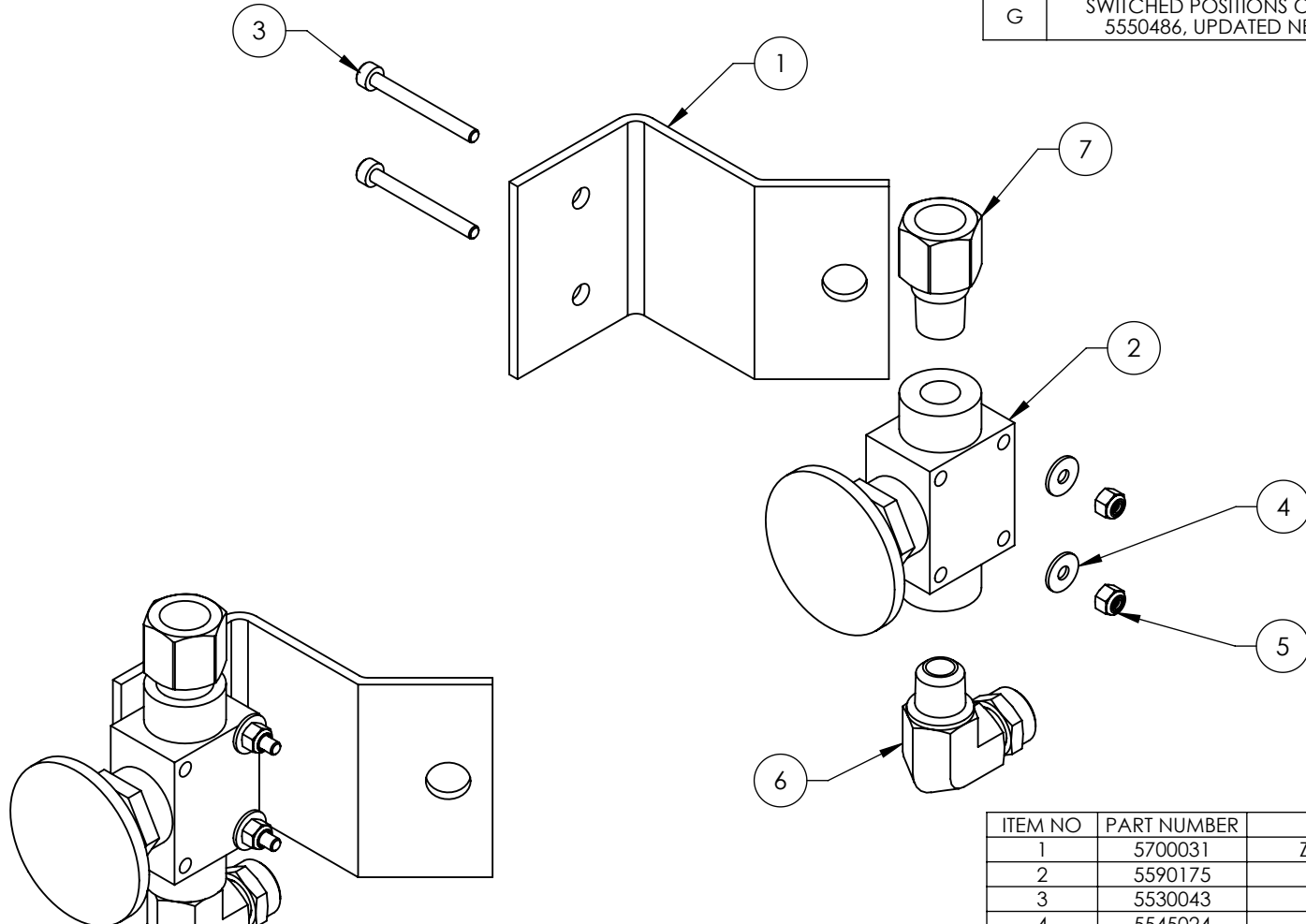
ITEM NO	PART NUMBER	DESCRIPTION	QTY	REV
1	5570053	PE FLEX TUBE Ø34.5xØ29	2100mm*	-
2	5555555	WQG1-M36/AD34.5 CONNECTOR	2	-
3	5535050	PLASTIC NUT M36 x 2	2	-

NOTE: UNLESS OTHERWISE SPECIFIED.

- SEE SHIPPING INSTRUCTIONS FOR FINAL PACKAGING
- SHOWN IN REPRESENTATIONAL FORM ONLY
(*)LENGTH FOR REFERENCE ONLY

DO NOT SCALE DRAWING	NAME	DATE	 1645 LEMONWOOD DR. SANTA PAULA, CA 93060
DIMENSIONS ARE IN MM	DRAWN	TM 05/05/2022	
	CHECKED	OR 05/10/2022	
	THIRD ANGLE PROJECTION		TITLE:
			FLEX TUBE KIT, UP TO 2000mm
<small>PROPRIETARY AND CONFIDENTIAL THE INFORMATION CONTAINED IN THIS DRAWING IS THE SOLE PROPERTY OF BENDPAK INC. ANY REPRODUCTION IN PART OR AS A WHOLE WITHOUT THE WRITTEN PERMISSION OF BENDPAK INC. IS PROHIBITED.</small>		SIZE DWG. NO.	REV
		A 5216139	A
SCALE: 1:3			SHEET 1 OF 1

REVISION				
REV	DESCRIPTION	DATE	EDITED BY	ECO#
E	REPLACED 5550481 WITH 5550087	10/29/2013	TM	00593
F	REPLACED 5590240 WITH 5590175, UPDATED NEXT ASSEMBLIES	05/05/2015	MR	00683
G	SWITCHED POSITIONS OF 5550087 AND 5550486, UPDATED NEXT ASSEMBLY	06/16/2016	TS	00765



ISOMETRIC VIEW
FOR REFERENCE ONLY
DO NOT SCALE

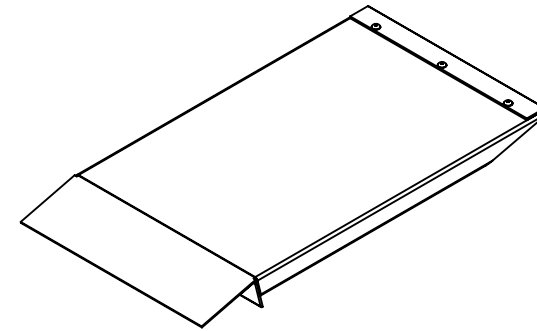
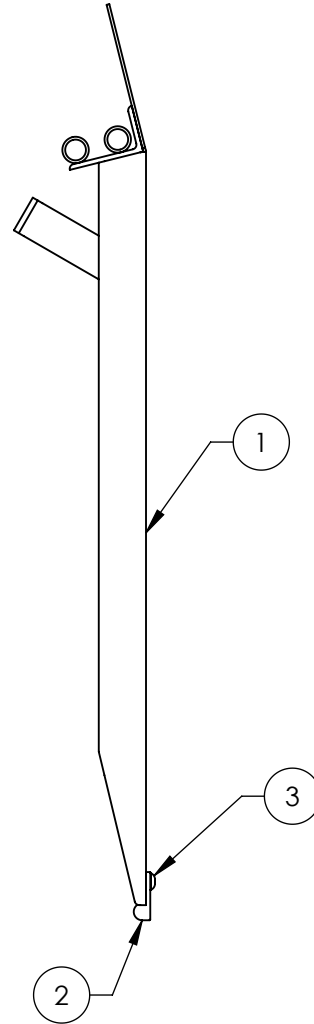
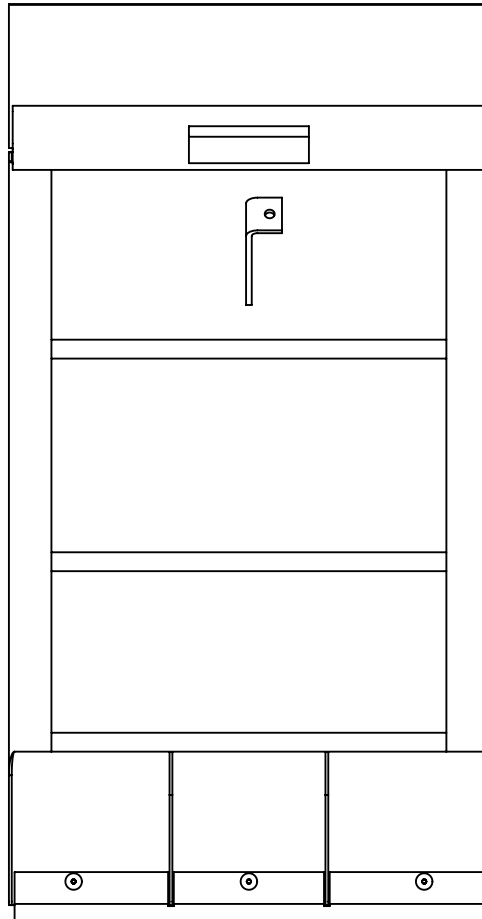
ITEM NO	PART NUMBER	DESCRIPTION	QTY	REV
1	5700031	ZERO ANGLE MOUNTING BRACKET	1	C
2	5590175	PUSH BUTTON AIR VALVE	1	-
3	5530043	SHCS M3 x 0.5 x 30	2	-
4	5545024	WASHER, M3 x 9mm FLAT	2	-
5	5535020	NUT M3 x 0.5, NL CL8	2	-
6	5550087	FTG ELB -04 COMP x -02 NPT	1	-
7	5550486	FTG NPL -02 NPT x -04 F NPT	1	-

DO NOT SCALE DRAWING	NAME	DATE	 1645 LEMONWOOD DR. SANTA PAULA, CA 93060
	DRAWN	AC 03/14/2008	
	CHECKED	CA 09/02/2015	
DIMENSIONS ARE IN MM		THIRD ANGLE PROJECTION	TITLE: PUSH BUTTON AIR ASSEMBLY
			SIZE DWG. NO. A 5215096
			REV G
NEXT ASSEMBLY D4-12 SERIES HD SERIES HDS SERIES HDSO SERIES PL-12000DP			SCALE: 2:3 SHEET 1 OF 1

NOTE: UNLESS OTHERWISE SPECIFIED.

- SEE SHIPPING INSTRUCTIONS FOR FINAL PACKAGING
- ASSEMBLE ITEMS AS SHOWN

PROPRIETARY AND CONFIDENTIAL
THE INFORMATION CONTAINED IN THIS DRAWING IS
THE SOLE PROPERTY OF BENDPAK INC. ANY
REPRODUCTION IN PART OR AS A WHOLE WITHOUT
THE WRITTEN PERMISSION OF BENDPAK INC. IS
PROHIBITED.



ISOMETRIC VIEW
FOR REFERENCE ONLY
DO NOT SCALE

REVISION				
REV	DESCRIPTION	DATE	EDITED BY	ECO#
G	UPDATED BOM REVISION	07/30/2010	TM	00387
G-001	UPDATED NEXT ASSEMBLY	05/17/2011	TM	00456
G-002	UPDATED NEXT ASSEMBLY	10/28/2011	TM	00487
G-003	UPDATED NEXT ASSEMBLIES	05/16/2013	TM	00593
G-004	UPDATED NEXT ASSEMBLIES	08/13/2014	TM	00664
G-005	UPDATED NEXT ASSEMBLIES	09/26/2016	TM	00782
H	UPDATED BOM REVISION AND NEXT ASSEMBLIES	05/31/2018	TS	00951
H-001	UPDATED NEXT ASSEMBLY	08/30/2018	TM	00992
J	REPLACED 5716149 WITH 5716087, REPLACED 5530097 AND 5535357 WITH 5530465, UPDATED BOM REVISION	08/09/2022	TM	01436

WHERE USED
D4-12 SERIES
HD-14T
HDS-14 SERIES
HDSO-14 SERIES

NOTE: UNLESS OTHERWISE SPECIFIED.

- REFER TO MODEL FOR ADDITIONAL INFORMATION
- SEE COLORS & GRAPHICS FOR LABEL PLACEMENT
- SEE SHIPPING INSTRUCTIONS FOR FINAL PACKAGING
- ASSEMBLE ITEMS AS SHOWN

ITEM NO	PART NUMBER	DESCRIPTION	QTY	REV
1	5600138	HD/HDS/HDSO-14 DRIVE UP RAMP WELDMENT	1	G
2	5716087	HDS-14 APPROACH RAMP EDGE GUARD	1	A
3	5530465	BBSS M6 x 1.0 x 12mm	3	--

NEXT ASSEMBLY
5210743
5245081
5245082
5245083
5245084
5245085
5245095
5245096
5245416
5245417

DO NOT SCALE DRAWING

DIMENSIONS ARE IN MM



NAME	DATE
DRAWN TM	06/04/2008
CHECKED OR	08/16/2022

THIRD ANGLE PROJECTION



PROPRIETARY AND CONFIDENTIAL
THE INFORMATION CONTAINED IN THIS DRAWING IS THE SOLE PROPERTY OF BENDPAK INC. ANY REPRODUCTION IN PART OR AS A WHOLE WITHOUT THE WRITTEN PERMISSION OF BENDPAK INC. IS PROHIBITED.

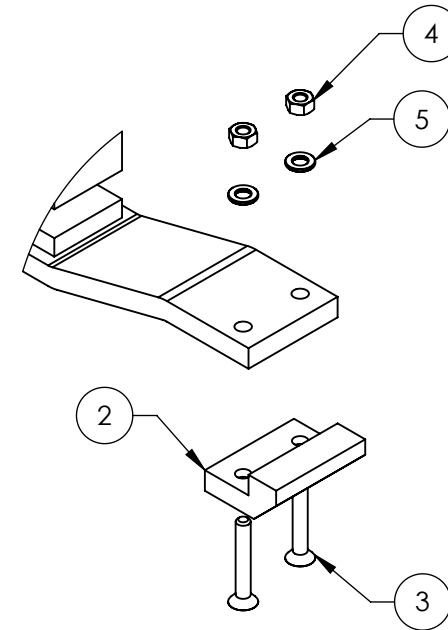
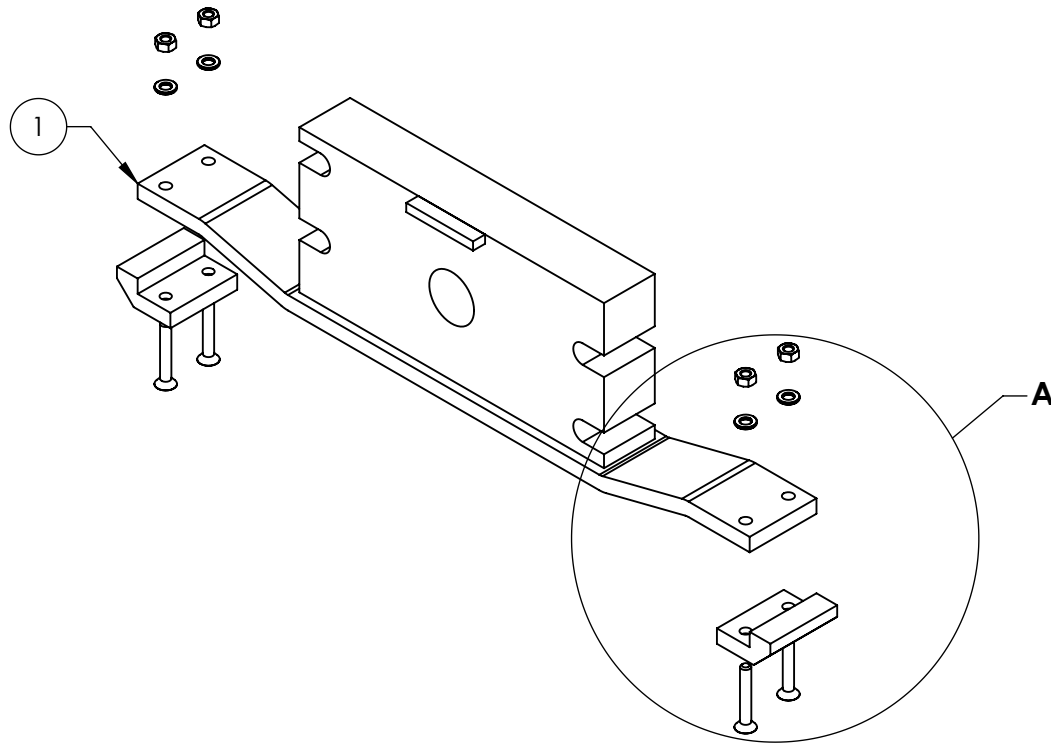
BendPak
1645 LEMONWOOD DR.
SANTA PAULA, CA 93060

TITLE:
D4-12, HD/HDS/HDSO-14
DRIVE UP RAMP ASSEMBLY

SIZE	DWG. NO.	REV
A	5215104	J

SCALE: 1:8 SHEET 1 OF 1

REVISION				
REV	DESCRIPTION	DATE	EDITED BY	ECO#
A	PRODUCTION RELEASE, DREIVED FROM 5215033	08/04/2014	TM	00664
B	REPLACED 5530077 WITH 5530247, UPDATED BOM REVISION	05/01/2017	TS	00829
C	UPDATED BOM REVISION AND NEXT ASSEMBLY	07/07/2017	TM	00843



DETAIL A
SCALE 1 : 3

WHERE USED
HDS-14
HDS-14X
HDSO-14

NOTE: UNLESS OTHERWISE SPECIFIED.

- SEE SHIPPING INSTRUCTIONS FOR FINAL PACKAGING
- ASSEMBLE ITEMS AS SHOWN

ITEM NO	PART NUMBER	DESCRIPTION	QTY	REV
1	5600924	HDS/HDSO-14 CYLINDER FLANGE ARM WELDMENT	1	A
2	5716006	HD/HDS/HDSO-14 CYLINDER FLANGE ARM SLIDE	2	F
3	5530247	FHPS M6 x 1 x 40	4	-
4	5535112	NUT M6 x 1.0	4	-
5	5545005	M6 FLAT WASHER	4	-

DO NOT SCALE DRAWING

NAME	DATE
DRAWN TM	08/04/2014
CHECKED AW	7/27/2017

DIMENSIONS ARE IN MM
TOLERANCES:
0. = ±1.5
0.0 = ±0.5

ANGULAR: 0. = ±2°

SURFACE FINISH 1.6 ISO Ra μm
FOR MACHINED SURFACES
UNLESS OTHERWISE SPECIFIED

THIRD ANGLE PROJECTION



PROPRIETARY AND CONFIDENTIAL
THE INFORMATION CONTAINED IN THIS DRAWING IS
THE SOLE PROPERTY OF BENDPAK INC. ANY
REPRODUCTION IN PART OR AS A WHOLE WITHOUT
THE WRITTEN PERMISSION OF BENDPAK INC. IS
PROHIBITED.



1645 LEMONWOOD DR.
SANTA PAULA, CA 93060

TITLE:
**HDS/HDSO-14 CYLINDER
FLANGE ARM ASSEMBLY**

SIZE	DWG. NO.	REV
A	5215664	C

SCALE: 1:4

SHEET 1 OF 1

NEXT ASSEMBLY
5210228
5215072
5215097
5215241

PART SPECIFICATION FORM

ACP

BENDPAK Number:	5570129
MRP Description:	1/4" HYDRAULIC HOSE 31 CL-0400X
Date:	05/24/2018
ECO :	00950

1. Engineering Specification

Application:

1/4" HYDRAULIC HOSE

Detailed Description:

ONE or TWO BRAID STEEL WIRE HYDRAULIC HOSE

SIZE: 1/4" / 6mm I.D. MIN
 0.53" / 13.4mm O.D. MAX

SPECS: 5700PSI OR 393 BAR WORKING PRESSURE MINIMUM
 17100PSI OR 1179 BAR MINIMUM BURST PRESSURE MINIMUM
 3" / 80mm MIN BEND RADIUS

COLOR: BLACK



ADDITIONAL CONTACT INFORMATION:

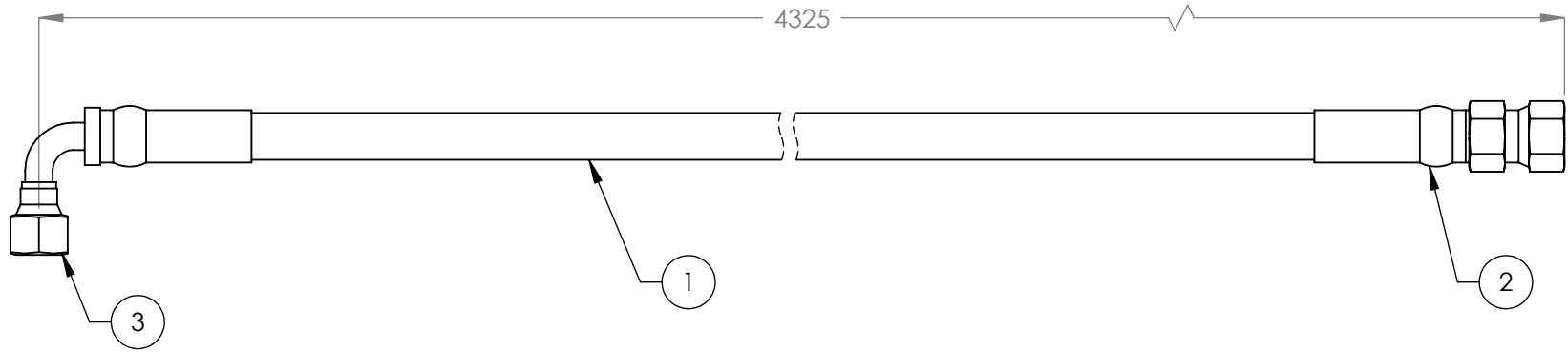
Xin Yurong
 Shandong Ningjin High Energy Hose Co., Ltd.
 Tel: +86 534-5421821
 No. 7, Taishan Rd., Industrial Park, Ningjin County, Shandong, China

2. Vendor Information (Or for Reference)



Approved Vendor	Vendor Part #	Contact #	AUTHORIZED COMPONENT PROVIDER
1) Ningjin Hydraulic Hose Co.	5570129	+86 534-5421821	X
2)			

OR BENDPAK ENGINEERING APPROVED EQUIVALENT

REVISION				
REV	DESCRIPTION	DATE	EDITED BY	ECO#
A	PRODUCTION RELEASE	03/11/2009	GJZ	00249
A-001	UPDATED NEXT ASSEMBLY	05/17/2013	TM	00593
B	REPLACED 5570110 WITH 5570129	03/23/2015	MR	00683



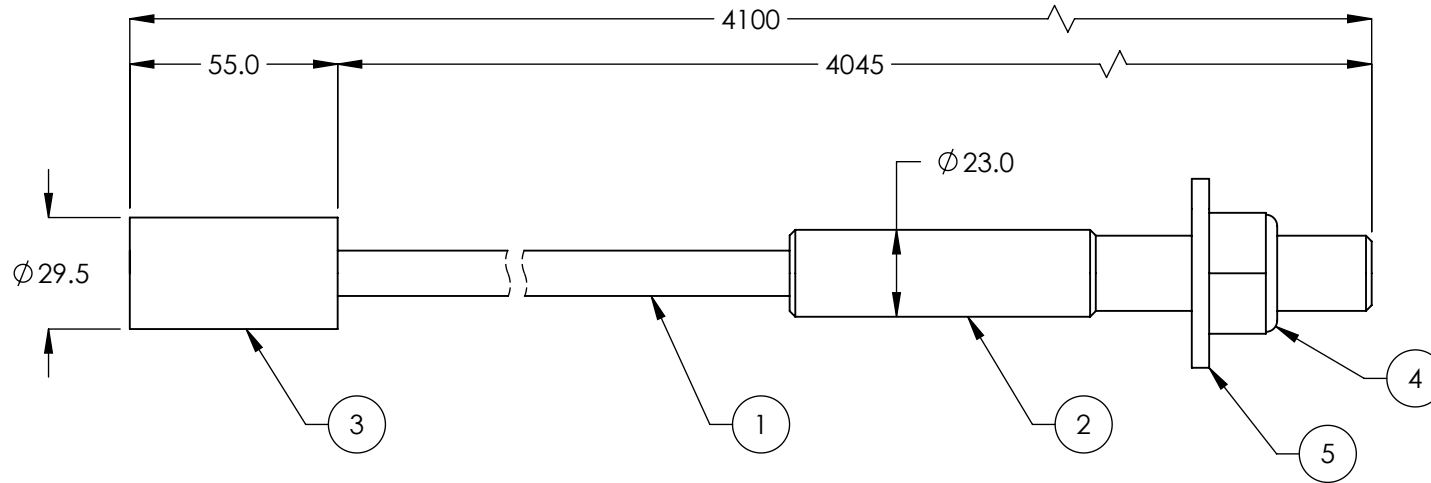
ITEM NO.	PART NUMBER	DESCRIPTION	QTY.	REV
1	5570129	Ø6.4 ID HYDRAULIC HOSE	4247mm*	-
2	5550325	FTG NPL Ø1/4 CRIMP x -04 JIC	1	-
3	5550345	FTG ELB Ø1/4 CRIMP x -04 JIC	1	-

DO NOT SCALE DRAWING		NAME	DATE	 1645 LEMONWOOD DR. SANTA PAULA, CA 93060
DIMENSIONS ARE IN MM TOLERANCES: 0. = ±1.5 0.0 = ±1.0 0.00 = ±0.25 0.000 = ±0.13		DRAWN	GJZ 03/11/2009	
SURFACE FINISH 1.6 ISO Ra µm FOR MACHINED SURFACES UNLESS OTHERWISE SPECIFIED		CHECKED	CA 08/27/2015	
		THIRD ANGLE PROJECTION		TITLE: HDS-14X HOSE ASSEMBLY Ø6.4 x 4325mm
				SIZE DWG. NO.
		PROPRIETARY AND CONFIDENTIAL THE INFORMATION CONTAINED IN THIS DRAWING IS THE SOLE PROPERTY OF BENDPAK INC. ANY REPRODUCTION IN PART OR AS A WHOLE WITHOUT THE WRITTEN PERMISSION OF BENDPAK INC. IS PROHIBITED.		REV
		NEXT ASSEMBLY 5250144		A 5570151 B
		SCALE: 1:2		SHEET 1 OF 1

NOTE: UNLESS OTHERWISE SPECIFIED.

- FOR ITEM 1 SPECIFICATIONS REFER TO PART SPECIFICATION FORM
- (*)ITEM 1 QTY FOR REFERENCE ONLY

REVISION				
REV	DESCRIPTION	DATE	EDITED BY	ECO#
C	UPDATED TITLE TO DENOTE SINGLE THREADED END	06/09/2010	AC	00366
C-001	UPDATED NEXT ASSEMBLIES	05/17/2013	TM	00593
C-002	UPDATED NEXT ASSEMBLIES	09/26/2016	TM	00782
D	UPDATED BOM REVISION	12/28/2017	TM	00909
E	ADDED 5535011 AND 5545345	07/20/2020	TM	01174



ITEM NO	PART NUMBER	DESCRIPTION	QTY.	REV
1	5595001	CABLE, LIFTING Ø12	4015mm*	-
2	5746020	Ø12 THREADED CABLE CONNECTOR	1	D
3	5746019	Ø12 CABLE END CONNECTOR	1	F
4	5535011	NUT M22 x 2.5 NL	1	-
5	5545345	WASHER M22 x 50mm FLAT	1	-

WHERE USED
HDS-14 SERIES
HDSO-14 SERIES

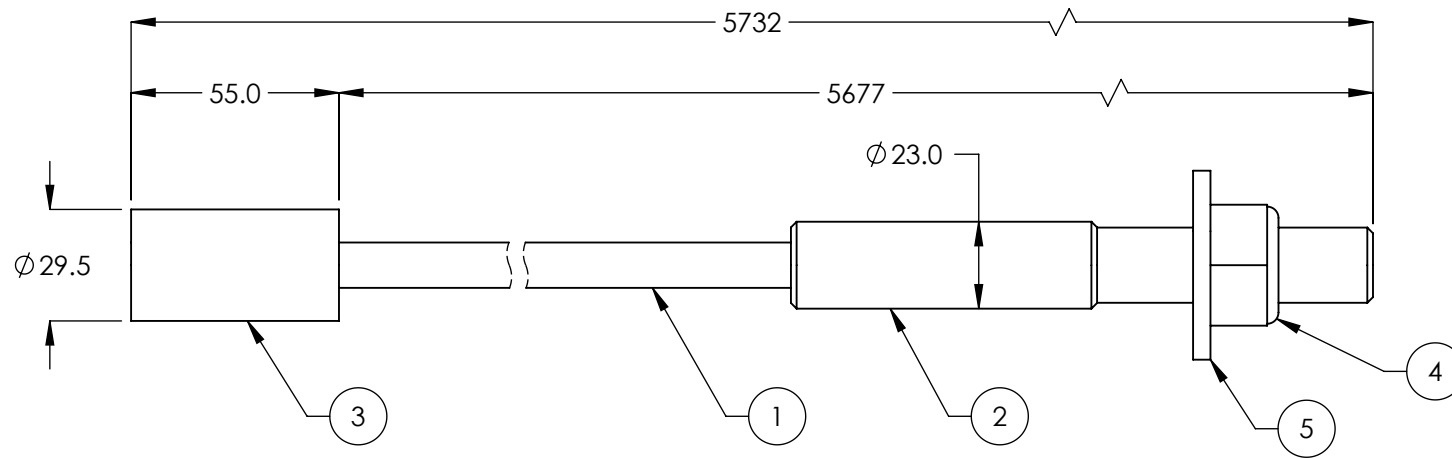
NOTE: UNLESS OTHERWISE SPECIFIED.

- FOR ITEM 1 SPECIFICATIONS REFER TO PART SPECIFICATION FORM
- LENGTH SHOWN IS AFTER SWAGING
- ITEM 1 QTY FOR REFERENCE ONLY
- THREAD 5535011 WITH 5545345 ONTO CABLES FOR SHIPMENT

NEXT ASSEMBLY
5250058
5250059
5250143
5250144
5250194
5250195

DO NOT SCALE DRAWING	NAME	DATE	<p>1645 LEMONWOOD DR. SANTA PAULA, CA 93060</p>
	DRAWN	GJZ 11/18/2008	
	CHECKED		
DIMENSIONS ARE IN MM TOLERANCES: 0. = ±1.5 0.0 = ±0.5			TITLE: HDS/HDSO-14 CABLE ASSEMBLY Ø12 x 4100mm ST
SURFACE FINISH 1.6 ISO Ra µm FOR MACHINED SURFACES UNLESS OTHERWISE SPECIFIED			
THIRD ANGLE PROJECTION			A 5595065
THE INFORMATION CONTAINED IN THIS DRAWING IS THE SOLE PROPERTY OF BENDPAK INC. ANY REPRODUCTION IN PART OR AS A WHOLE WITHOUT THE WRITTEN PERMISSION OF BENDPAK INC. IS PROHIBITED.			REV E
SCALE: 1:2			SHEET 1 OF 1

REVISION				
REV	DESCRIPTION	DATE	EDITED BY	ECO#
C	UPDATED TITLE TO DENOTE SINGLE THREADED END	06/09/2010	AC	00366
C-001	UPDATED NEXT ASSEMBLIES	05/17/2013	TM	00593
C-002	UPDATED NEXT ASSEMBLIES	09/26/2016	TM	00782
D	UPDATED BOM REVISION	12/28/2017	TM	00909
E	ADDED 5535011 AND 5545345	07/20/2020	TM	01174



WHERE USED
HDS-14 SERIES
HDSO-14 SERIES

NOTE: UNLESS OTHERWISE SPECIFIED.

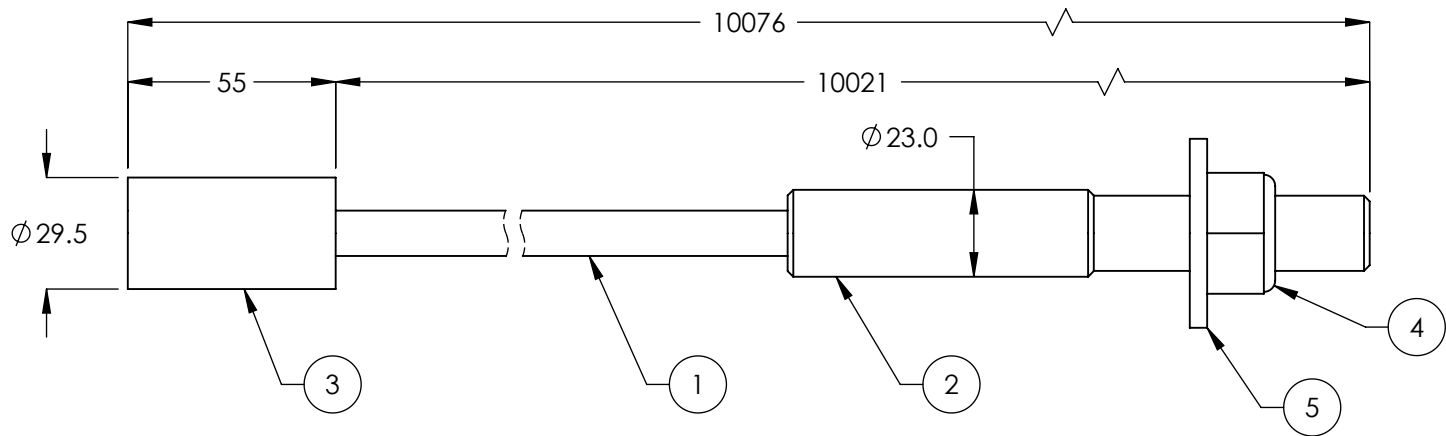
- FOR ITEM 1 SPECIFICATIONS REFER TO PART SPECIFICATION FORM
- LENGTH SHOWN IS AFTER SWAGING
- ITEM 1 QTY FOR REFERENCE ONLY
- THREAD 5535011 WITH 5545345 ONTO CABLES FOR SHIPMENT

NEXT ASSEMBLY
5250058
5250059
5250143
5250144
5250194
5250195

ITEM NO	PART NUMBER	DESCRIPTION	QTY.	REV
1	5595001	CABLE, LIFTING Ø12	5647mm*	-
2	5746020	Ø12 THREADED CABLE CONNECTOR	1	D
3	5746019	Ø12 CABLE END CONNECTOR	1	F
4	5535011	NUT M22 x 2.5 NL	1	-
5	5545345	WASHER M22 x 50mm FLAT	1	-

DO NOT SCALE DRAWING	NAME	DATE	 1645 LEMONWOOD DR. SANTA PAULA, CA 93060
	DRAWN	GJZ 11/18/2008	
	CHECKED		
DIMENSIONS ARE IN MM TOLERANCES: 0. = ±1.5 0.0 = ±0.5			TITLE: HDS/HDSO-14 CABLE ASSEMBLY Ø12 x 5732mm ST
SURFACE FINISH 1.6 ISO Ra µm FOR MACHINED SURFACES UNLESS OTHERWISE SPECIFIED			
THIRD ANGLE PROJECTION 			SIZE DWG. NO. REV A 5595066 E
PROPRIETARY AND CONFIDENTIAL THE INFORMATION CONTAINED IN THIS DRAWING IS THE SOLE PROPERTY OF BENDPAK INC. ANY REPRODUCTION IN PART OR AS A WHOLE WITHOUT THE WRITTEN PERMISSION OF BENDPAK INC. IS PROHIBITED.			SCALE: 1:2 SHEET 1 OF 1

REVISION				
REV	DESCRIPTION	DATE	EDITED BY	ECO#
C	UPDATED TITLE TO DENOTE SINGLE THREADED END	06/09/2010	AC	00366
C-001	UPADTED NEXT ASSEMBLY	05/17/2013	TM	00593
D	WAS 10101 NOW 10076, WAS 10016 NOW 9991	08/31/2016	TM	00778
E	ADDED 5535011 AND 5545345	07/20/2020	TM	01174



ITEM NO	PART NUMBER	DESCRIPTION	QTY.	REV
1	5595001	CABLE, LIFTING Ø12	9991mm*	-
2	5746020	Ø12 THREADED CABLE CONNECTOR	1	D
3	5746019	Ø12 CABLE END CONNECTOR	1	F
4	5535011	NUT M22 x 2.5 NL	1	-
5	5545345	WASHER M22 x 50mm FLAT	1	-

WHERE USED
HDS-14X
HDS-14LSXE

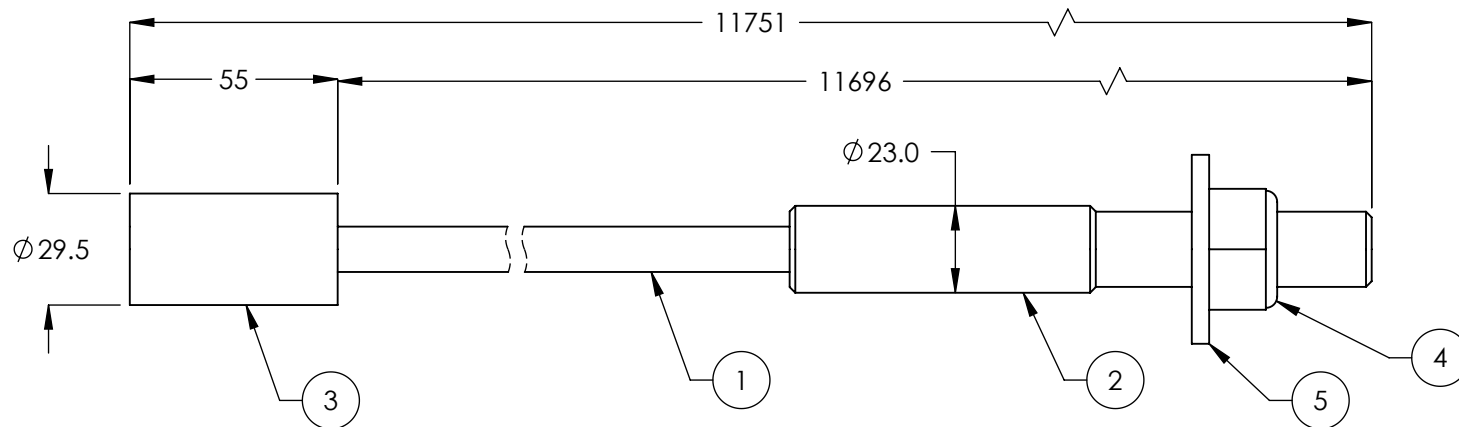
NOTE: UNLESS OTHERWISE SPECIFIED.

- FOR ITEM 1 SPECIFICATIONS REFER TO PART SPECIFICATION FORM
- LENGTH SHOWN IS AFTER SWAGING
- ITEM 1 QTY FOR REFERENCE ONLY
- THREAD 5535011 WITH 5545345 ONTO CABLES FOR SHIPMENT

NEXT ASSEMBLY
5250144
5250195

DO NOT SCALE DRAWING	NAME	DATE	<p>1645 LEMONWOOD DR. SANTA PAULA, CA 93060</p>
	DRAWN	GJZ 11/18/2008	
	CHECKED		
DIMENSIONS ARE IN MM TOLERANCES: 0. = ±1.5 0.0 = ±0.5	THIRD ANGLE PROJECTION		TITLE:
SURFACE FINISH 1.6 ISO Ra µm FOR MACHINED SURFACES UNLESS OTHERWISE SPECIFIED			HDS-14X/14LSXE CABLE ASSEMBLY Ø12 x 10076mm ST
	<p>PROPRIETARY AND CONFIDENTIAL THE INFORMATION CONTAINED IN THIS DRAWING IS THE SOLE PROPERTY OF BENDPAK INC. ANY REPRODUCTION IN PART OR AS A WHOLE WITHOUT THE WRITTEN PERMISSION OF BENDPAK INC. IS PROHIBITED.</p>		SIZE DWG. NO.
	A		5595067
			REV
			E
	SCALE: 1:2		SHEET 1 OF 1

REVISION				
REV	DESCRIPTION	DATE	EDITED BY	ECO#
C	UPDATED TITLE TO DENOTE SINGLE THREADED END	06/09/2010	AC	00366
C-001	UPDATED NEXT ASSEMBLIES	05/17/2013	TM	00593
D	WAS 11726 NOW 11751, WAS 11641 NOW 11556	08/31/2016	TM	00778
E	ADDED 5535011 AND 5545345	07/20/2020	TM	01174



ITEM NO	PART NUMBER	DESCRIPTION	QTY.	REV
1	5595001	CABLE, LIFTING Ø12	11556mm*	-
2	5746020	Ø12 THREADED CABLE CONNECTOR	1	D
3	5746019	Ø12 CABLE END CONNECTOR	1	F
4	5535011	NUT M22 x 2.5 NL	1	-
5	5545345	WASHER M22 x 50mm FLAT	1	-

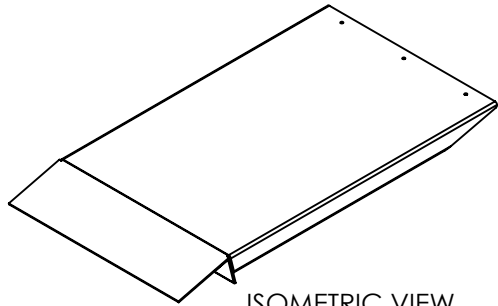
WHERE USED
HDS-14X
HDS-14LSXE

NOTE: UNLESS OTHERWISE SPECIFIED.

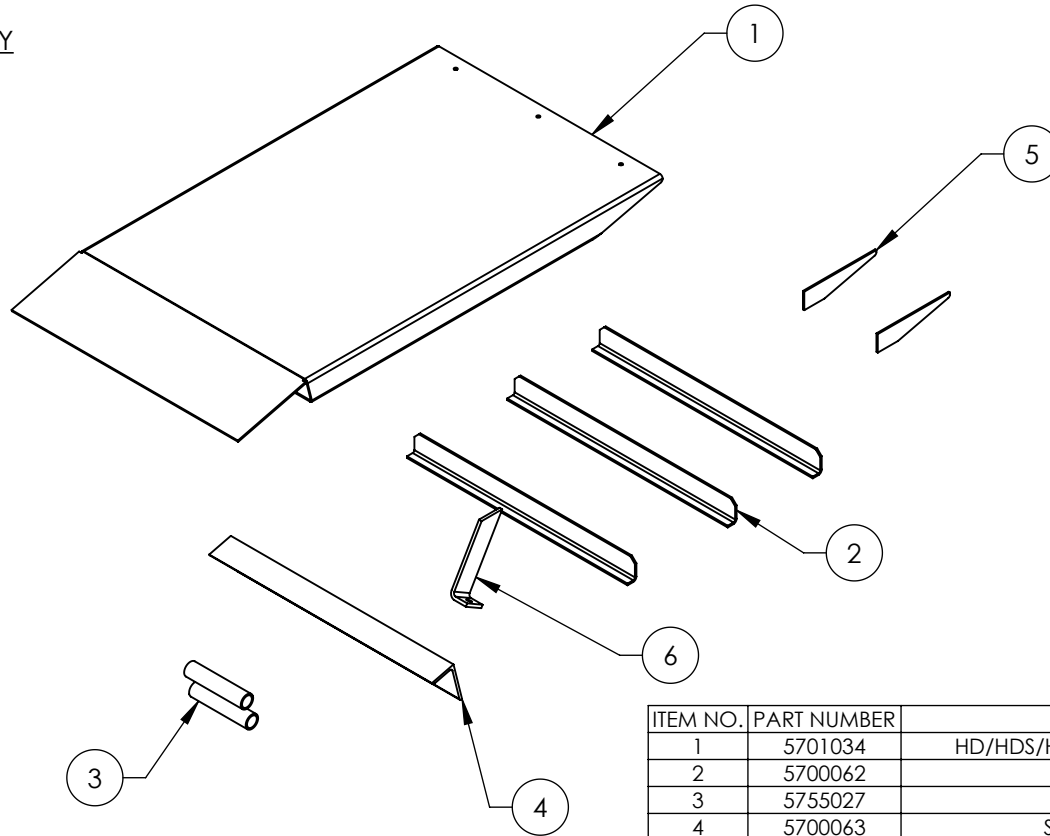
- FOR ITEM 1 SPECIFICATIONS REFER TO PART SPECIFICATION FORM
- LENGTH SHOWN IS AFTER SWAGING
- ITEM 1 QTY FOR REFERENCE ONLY
- THREAD 5535011 WITH 5545345 ONTO CABLES FOR SHIPMENT

NEXT ASSEMBLY
5250144
5250195

DO NOT SCALE DRAWING	NAME	DATE	<p>1645 LEMONWOOD DR. SANTA PAULA, CA 93060</p>
	DRAWN	GJZ 11/18/2008	
	CHECKED		
DIMENSIONS ARE IN MM TOLERANCES: 0 = ±1.5 0.0 = ±0.5	THIRD ANGLE PROJECTION		TITLE:
SURFACE FINISH 1.6 ISO Ra µm FOR MACHINED SURFACES UNLESS OTHERWISE SPECIFIED			HDS-14X/14LSXE CABLE ASSEMBLY Ø12 x 11751mm ST
	<p>PROPRIETARY AND CONFIDENTIAL THE INFORMATION CONTAINED IN THIS DRAWING IS THE SOLE PROPERTY OF BENDPAK INC. ANY REPRODUCTION IN PART OR AS A WHOLE WITHOUT THE WRITTEN PERMISSION OF BENDPAK INC. IS PROHIBITED.</p>		SIZE DWG. NO.
	A		5595068
			REV
			E
	SCALE: 1:2		SHEET 1 OF 1



ISOMETRIC VIEW
FOR REFERENCE ONLY
DO NOT SCALE



REVISION				
REV	DESCRIPTION	DATE	EDITED BY	ECO#
F	UPDATED BOM REVISION	07/30/2010	TM	00387
F-001	CHANGED PAINT COLOR FROM BLUE TO YELLOW AND ADDED PAINT SPEC NUMBER	12/08/2010	TM	00427
F-002	CHANGE PAINT SPEC FROM 583-2T TO RAL-1018	01/04/2017	TS	00798
F-003	ADDED GLOSS NOTE TO PAINT	02/05/2020	CA	01120
G	WAS 128 NOW 162, WAS 38 NOW 167 2PL, 5755027 WAS 50 NOW 46, ADDED 18.0 DISTANCE, REMOVED ALUMINUM OXIDE GRIT, UPDATED BOM REVISION	08/04/2022	TM	01436

WHERE USED
HD-14T
HDS-14 SERIES
HDSO-14 SERIES

NOTE: UNLESS OTHERWISE SPECIFIED.

- REFER TO MODEL FOR ADDITIONAL INFORMATION
- BREAK AND DEBURR ALL SHARP EDGES 0.3mm
- REMOVE ALL WELD SPLATTER
- DIMENSIONS SHOWN ARE AFTER PAINTING
- PAINT BENDPAK YELLOW (RAL-1018) 20% GLOSS

ITEM NO.	PART NUMBER	DESCRIPTION	QTY.	REV
1	5701034	HD/HDS/HDSO-14 DRIVE UP RAMP	1	E
2	5700062	RAMP SUPPORT	3	C
3	5755027	RAMP HINGE	2	C
4	5700063	SUPPORT ANGLE	1	D
5	5736083	DRIVE UP RAMP END SUPPORT	2	F
6	5730012	RAMP STOP	1	C

DO NOT SCALE DRAWING

NAME	DATE
DRAWN JR	04/30/2008
CHECKED OR	08/16/2022



1645 LEMONWOOD DR.
SANTA PAULA, CA 93060

DIMENSIONS ARE IN MM
TOLERANCES:
0. = ±1.5
0.0 = ±0.5

THIRD ANGLE PROJECTION



SURFACE FINISH 1.6 ISO Ra μm
FOR MACHINED SURFACES
UNLESS OTHERWISE SPECIFIED

PROPRIETARY AND CONFIDENTIAL
THE INFORMATION CONTAINED IN THIS DRAWING IS
THE SOLE PROPERTY OF BENDPAK INC. ANY
REPRODUCTION IN PART OR AS A WHOLE WITHOUT
THE WRITTEN PERMISSION OF BENDPAK INC. IS
PROHIBITED.

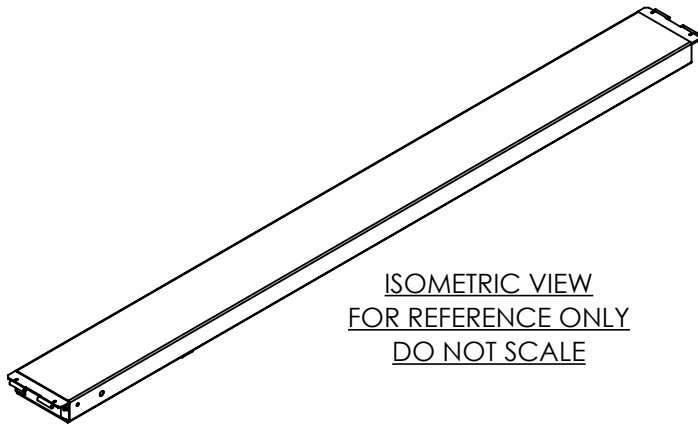
TITLE:
HD/HDS/HDSO-14 DRIVE
UP RAMP WELDMNT

SIZE DWG. NO. REV
A 5600138 G

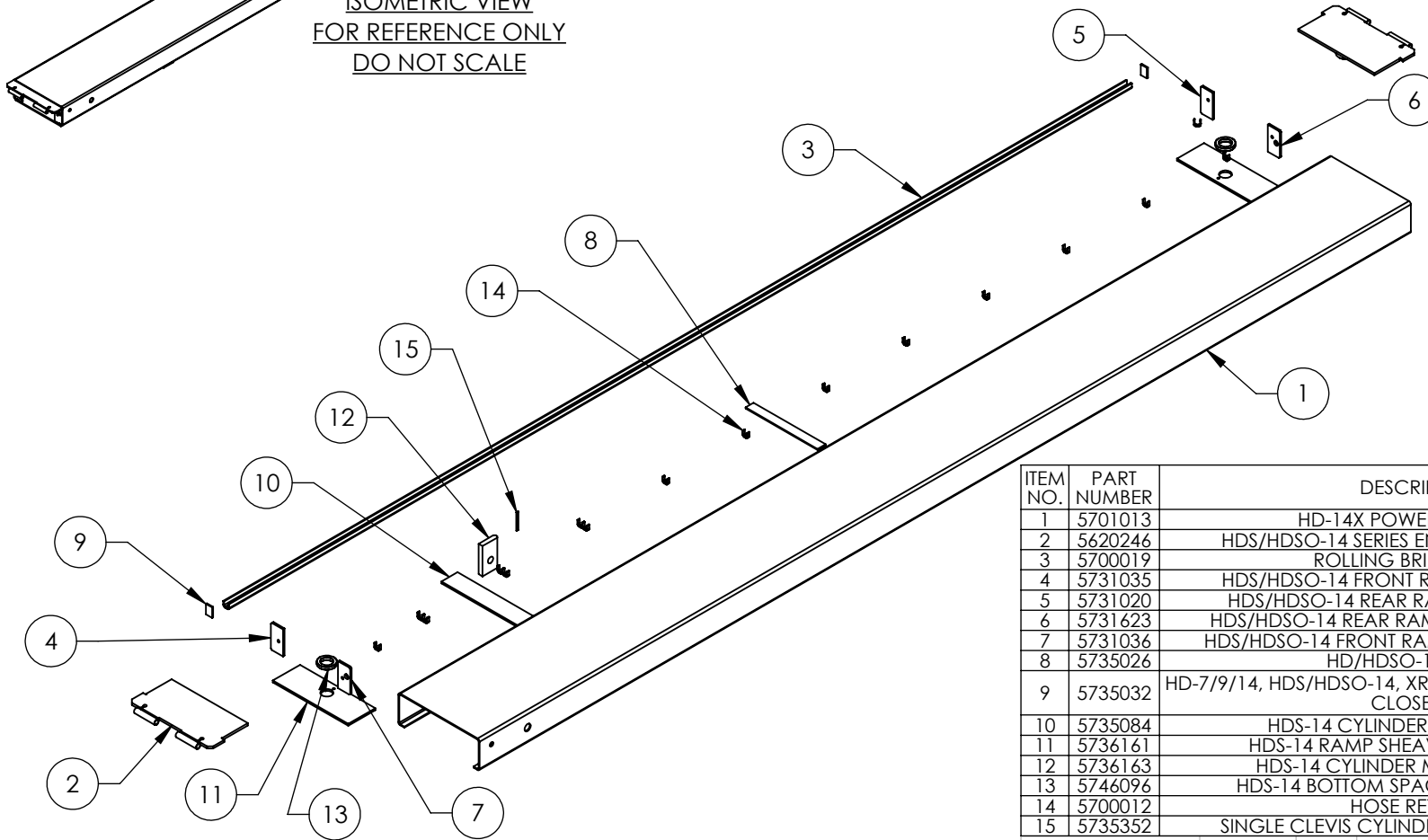
SCALE: 1:12

SHEET 1 OF 2

NEXT ASSEMBLY
5215104



ISOMETRIC VIEW
FOR REFERENCE ONLY
DO NOT SCALE



WHERE USED
HDS-14X

NOTE: UNLESS OTHERWISE SPECIFIED.

1. REFER TO MODEL FOR ADDITIONAL INFORMATION
2. BREAK AND DEBURR ALL SHARP EDGES 0.3mm
3. REMOVE ALL WELD SPLATTER
4. DIMENSIONS SHOWN ARE AFTER PAINTING
5. PAINT BENDPAK GRAY (RAL-7024) 20% GLOSS

REVISION				
REV	DESCRIPTION	DATE	EDITED BY	ECO#
C	UPDATED BOM REVISION	08/10/2010	TM	00388
D	MOVED 5735032 UP 12mm, UPDATED BOM REVISION	10/18/2010	TM	00414
D-001	ROLLING BRIDGE BEAM WELD WAS 6 x 100-300 NOW 5 x 60-350	11/22/2010	TM	00427
E	UPDATED BOM REVISION, ADDED 5735352	12/29/2010	TM	00431
E-001	ADDED 6mm WELD TO BOTTOM OF 5736163	08/11/2011	TM	00479
E-002	ADDED RAL NUMBER TO NOTES	01/05/2017	TS	00798
E-003	ADDED GLOSS NOTE TO PAINT, REMOVED GRIT NOTE	02/04/2020	CA	01120

ITEM NO.	PART NUMBER	DESCRIPTION	QTY.	REV
1	5701013	HD-14X POWER SIDE RAMP	1	D
2	5620246	HDS/HDSO-14 SERIES END PLATE WELDMENT	2	B
3	5700019	ROLLING BRIDGE BEAM	1	B
4	5731035	HDS/HDSO-14 FRONT RAMP SUPPORT PLATE	1	A
5	5731020	HDS/HDSO-14 REAR RAMP SUPPORT PLATE	1	A
6	5731623	HDS/HDSO-14 REAR RAMP AIR SUPPORT PLATE	1	A
7	5731036	HDS/HDSO-14 FRONT RAMP AIR SUPPORT PLATE	1	A
8	5735026	HD/HDSO-14 TIE BAR	1	E
9	5735032	HD-7/9/14, HDS/HDSO-14, XR-12000 ROLLING JACK RAIL CLOSEOUT	2	A
10	5735084	HDS-14 CYLINDER SUPPORT PLATE	1	A
11	5736161	HDS-14 RAMP SHEAVE BOTTOM PLATE	2	B
12	5736163	HDS-14 CYLINDER MOUNTING PLATE	1	A
13	5746096	HDS-14 BOTTOM SPACER, RAMP SHEAVE	2	A
14	5700012	HOSE RETAINER	16	B
15	5735352	SINGLE CLEVIS CYLINDER ALIGNMENT PLATE	1	A

DO NOT SCALE DRAWING

NAME	DATE
DRAWN GJZ	11/26/2008
CHECKED --	--



1645 LEMONWOOD DR.
SANTA PAULA, CA 93060

DIMENSIONS ARE IN MM
TOLERANCES:
0. = ±1.5
0.0 = ±0.5

THIRD ANGLE PROJECTION



SURFACE FINISH 1.6 ISO Ra µm
FOR MACHINED SURFACES
UNLESS OTHERWISE SPECIFIED

PROPRIETARY AND CONFIDENTIAL
THE INFORMATION CONTAINED IN THIS DRAWING IS
THE SOLE PROPERTY OF BENDPAK INC. ANY
REPRODUCTION IN PART OR AS A WHOLE WITHOUT
THE WRITTEN PERMISSION OF BENDPAK INC. IS
PROHIBITED.

TITLE:
HDS-14X POWER SIDE
RAMP WELDMENT

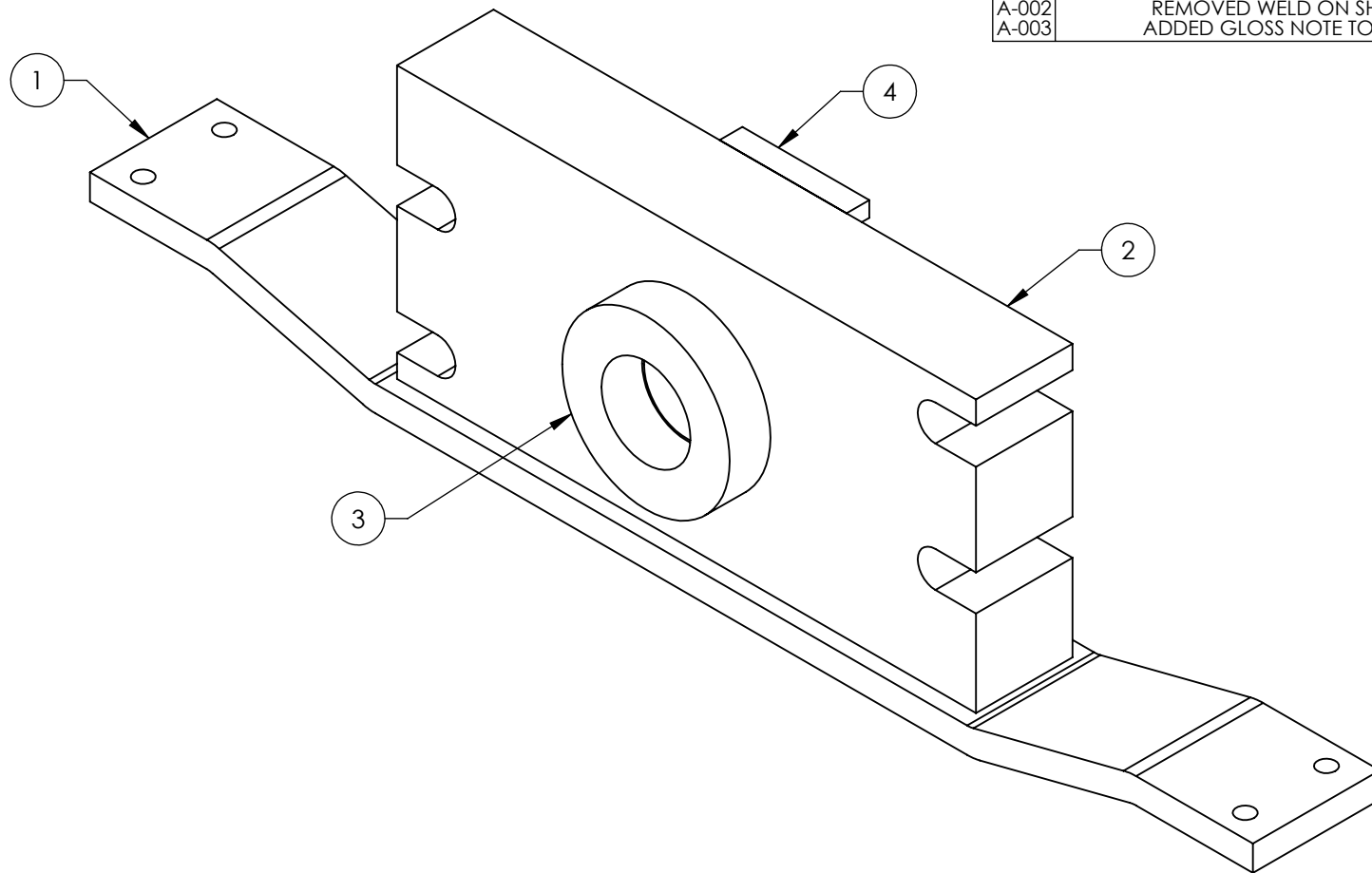
SIZE DWG. NO.	REV
A 5600268	E

SCALE: 1:30

SHEET 1 OF 3

NEXT ASSEMBLY
5215241

REVISION				
REV	DESCRIPTION	DATE	EDITED BY	ECO#
A	PRODUCTION RELEASE, DERIVED FROM 5600079	08/04/2014	TM	00664
A-001	ADDED RAL NUMBER TO NOTES	01/05/2017	TS	00798
A-002	REMOVED WELD ON SHEET 2	05/01/2017	TS	00829
A-003	ADDED GLOSS NOTE TO PAINT	02/03/2020	CA	01120



WHERE USED
HDS-14
HDS-14X
HDSO-14P

NOTE: UNLESS OTHERWISE SPECIFIED.

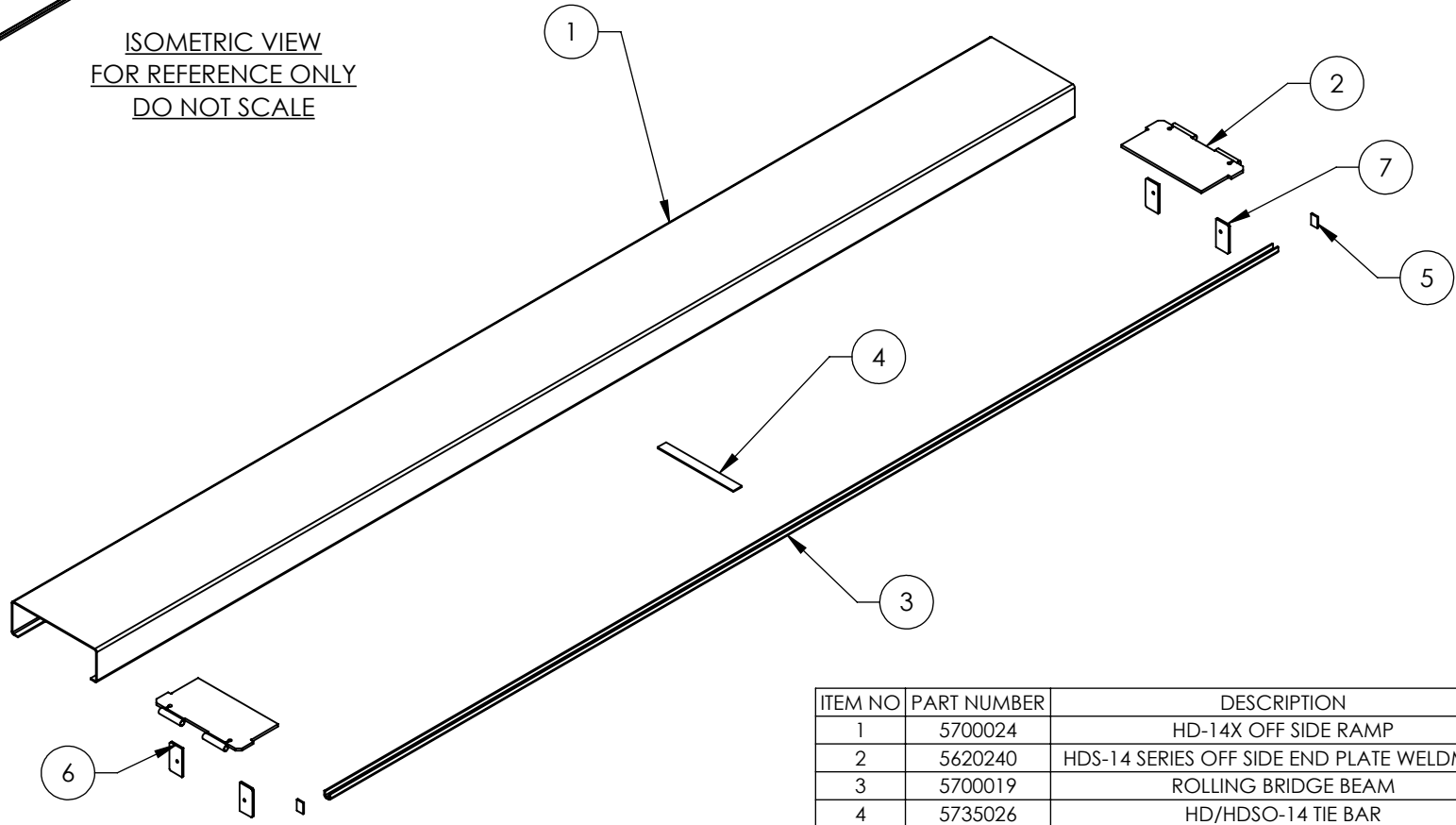
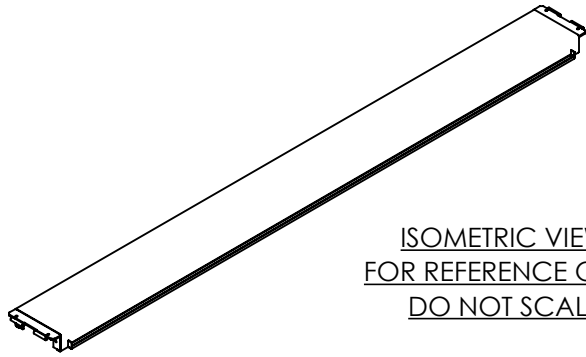
1. REFER TO MODEL FOR ADDITIONAL INFORMATION
2. BREAK AND DEBURR ALL SHARP EDGES 0.3mm
3. REMOVE ALL WELD SPLATTER
4. DIMENSIONS SHOWN ARE AFTER PAINTING
5. PAINT GRAY (RAL-7024) 20% GLOSS

ITEM NO.	PART NUMBER	DESCRIPTION	QTY.	REV
1	5701732	HDS/HDSO-14 CYLINDER FLANGE ARM	1	A
2	5736820	HDS/HDSO-14 CABLE RETAINER BLOCK	1	A
3	5745317	HD-14 SERIES CYLINDER FLANGE ARM SPACER	1	A
4	5735289	D4-12, HD/HDS-14 CYLINDER FLANGE ARM SPACER	1	A

DO NOT SCALE DRAWING	NAME	DATE	 1645 LEMONWOOD DR. SANTA PAULA, CA 93060
DIMENSIONS ARE IN MM TOLERANCES: 0. = ±1.5 0.0 = ±0.5	DRAWN	TM 08/04/2014	
	CHECKED	OR 04/22/2020	
SURFACE FINISH 1.6 ISO R _a μm FOR MACHINED SURFACES UNLESS OTHERWISE SPECIFIED	THIRD ANGLE PROJECTION		TITLE: HDS/HDSO-14 CYLINDER FLANGE ARM WELDMENT
			SIZE DWG. NO. REV A 5600924 A
PROPRIETARY AND CONFIDENTIAL THE INFORMATION CONTAINED IN THIS DRAWING IS THE SOLE PROPERTY OF BENDPAK INC. ANY REPRODUCTION IN PART OR AS A WHOLE WITHOUT THE WRITTEN PERMISSION OF BENDPAK INC. IS PROHIBITED.			SCALE: 1:2 SHEET 1 OF 2

NEXT ASSEMBLY
5215664

REVISION				
REV	DESCRIPTION	DATE	EDITED BY	ECO#
A	PRODUCTION RELEASE, DERIVED FROM 5600289	12/05/2019	CA	01120



ITEM NO	PART NUMBER	DESCRIPTION	QTY	REV
1	5700024	HD-14X OFF SIDE RAMP	1	D
2	5620240	HDS-14 SERIES OFF SIDE END PLATE WELDMENT	2	B
3	5700019	ROLLING BRIDGE BEAM	1	B
4	5735026	HD/HDSO-14 TIE BAR	1	E
5	5735032	HD-7/9/14, HDS/HDSO-14, XR-12000 ROLLING JACK RAIL CLOSEOUT	2	C
6	5731035	HDS/HDSO-14 FRONT RAMP SUPPORT PLATE	2	A
7	5731020	HDS/HDSO-14 REAR RAMP SUPPORT PLATE	2	A

WHERE USED
HDS-14X

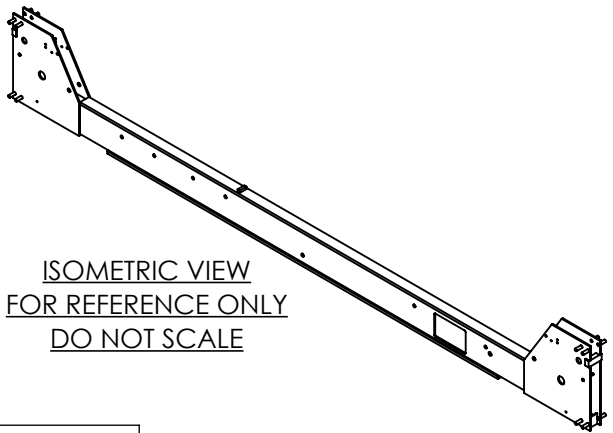
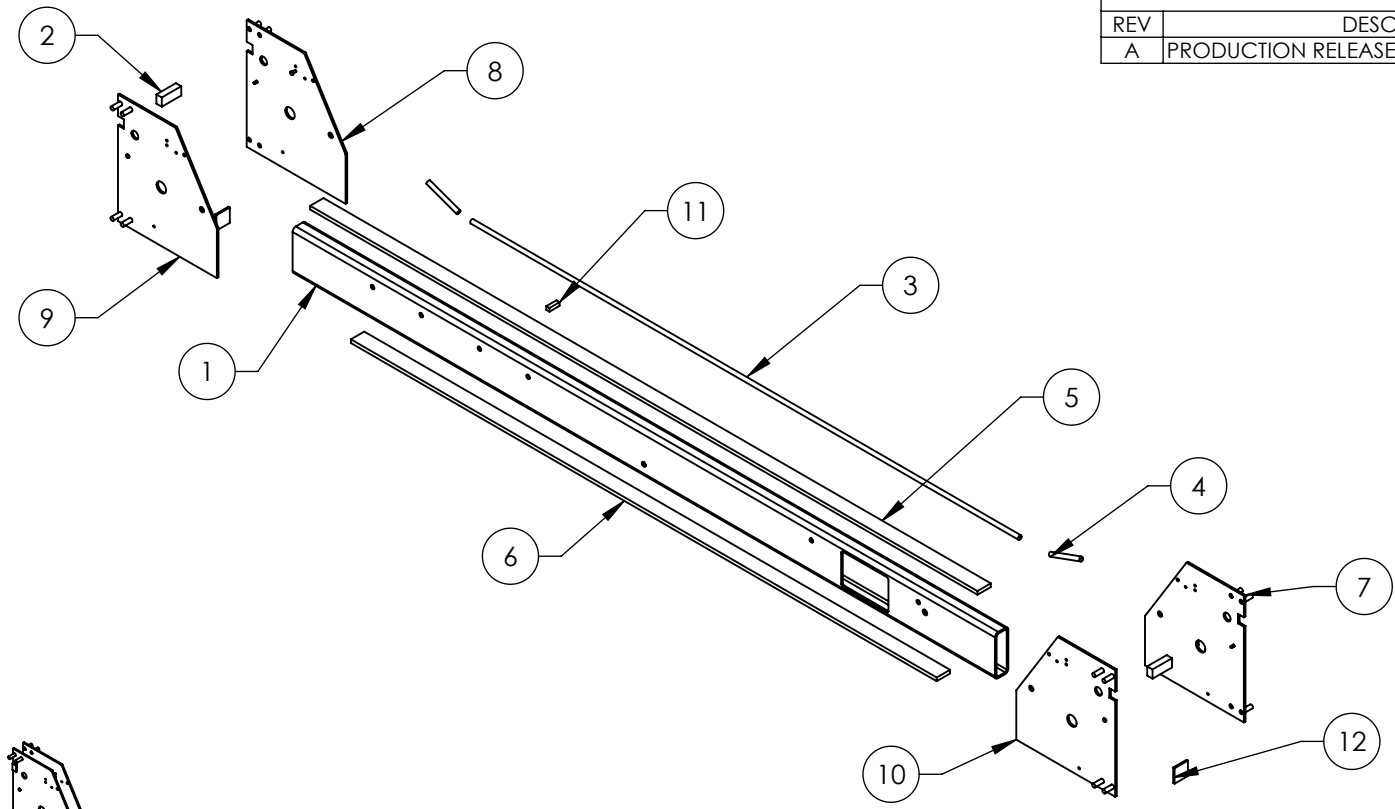
NOTE: UNLESS OTHERWISE SPECIFIED.

1. REFER TO MODEL FOR ADDITIONAL INFORMATION
2. BREAK AND DEBURR ALL SHARP EDGES 0.3mm
3. REMOVE ALL WELD SPLATTER
4. DIMENSIONS SHOWN ARE AFTER PAINTING
5. PAINT BENDPAK GREY (RAL-7024) 20% GLOSS

NEXT ASSEMBLY
5245083

DO NOT SCALE DRAWING	NAME	DATE	 1645 LEMONWOOD DR. SANTA PAULA, CA 93060
	DRAWN	CA 12/05/2019	
	CHECKED	-- --	
DIMENSIONS ARE IN MM TOLERANCES: 0. = ±1.5 0.0 = ±0.5 SURFACE FINISH 1.6 ISO Ra µm FOR MACHINED SURFACES UNLESS OTHERWISE SPECIFIED	THIRD ANGLE PROJECTION		TITLE: HDS-14X OFF SIDE RAMP WELDMENT
			SIZE DWG. NO. REV A 5601437 A
PROPRIETARY AND CONFIDENTIAL THE INFORMATION CONTAINED IN THIS DRAWING IS THE SOLE PROPERTY OF BENDPAK INC. ANY REPRODUCTION IN PART OR AS A WHOLE WITHOUT THE WRITTEN PERMISSION OF BENDPAK INC. IS PROHIBITED.			SCALE: 1:30 SHEET 1 OF 2

REVISION				
REV	DESCRIPTION	DATE	EDITED BY	ECO#
A	PRODUCTION RELEASE, DERIVED FROM 5600276	04/28/2022	TM	01414



ISOMETRIC VIEW
FOR REFERENCE ONLY
DO NOT SCALE

WHERE USED
HDS-14 SERIES

ITEM NO	PART NUMBER	DESCRIPTION	QTY	REV
1	5766436	HDS-14 CROSSTUBE, LARGE WINDOW	1	A
2	5735027	CROSSTUBE SAFETY BLOCK	2	B
3	5755168	AIR LINE TROUGH Ø13.5 x Ø9.5 x 2050	1	A
4	5755022	AIR LINE TROUGH Ø13.5 x Ø9.5 x 121	2	B
5	5735023	HD-14 SERIES TOP CROSS TUBE STRAP	1	D
6	5735039	HD/HDSO-14 BOTTOM CROSS TUBE STRAP	1	D
7	5620228	HDS/HDSO-14 CROSSTUBE END PLATE SUBWELDMENT #1	1	K
8	5620229	HDS/HDSO-14 CROSSTUBE END PLATE SUBWELDMENT #2	1	J
9	5620230	HDS/HDSO-14 CROSSTUBE END PLATE SUBWELDMENT #3	1	H
10	5620231	HDS/HDSO-14 CROSSTUBE END PLATE SUBWELDMENT #4	1	J
11	5760003	D4-12, HD-12/14 RAMP STOP	1	C
12	5735073	D4-12, HD-7/9, HDS/HDSO-14 CARRIAGE TIE BLOCK	2	C

NOTE: UNLESS OTHERWISE SPECIFIED.

- REFER TO MODEL FOR ADDITIONAL INFORMATION
- BREAK AND DEBURR ALL SHARP EDGES 0.3mm
- REMOVE ALL WELD SPLATTER
- DIMENSIONS SHOWN ARE AFTER PAINTING
- PAINT GRAY (RAL-7024) 20% GLOSS

NEXT ASSEMBLY
5216147

DO NOT SCALE DRAWING

DRAWN	NAME	DATE
CHECKED	TM	04/28/2022

DIMENSIONS ARE IN MM
TOLERANCES:
0. = ±1.5
0.0 = ±0.5

SURFACE FINISH 1.6 ISO R_a μm
FOR MACHINED SURFACES
UNLESS OTHERWISE SPECIFIED

THIRD ANGLE PROJECTION

PROPRIETARY AND CONFIDENTIAL
THE INFORMATION CONTAINED IN THIS DRAWING IS
THE SOLE PROPERTY OF BENDPAK INC. ANY
REPRODUCTION IN PART OR AS A WHOLE WITHOUT
THE WRITTEN PERMISSION OF BENDPAK INC. IS
PROHIBITED.

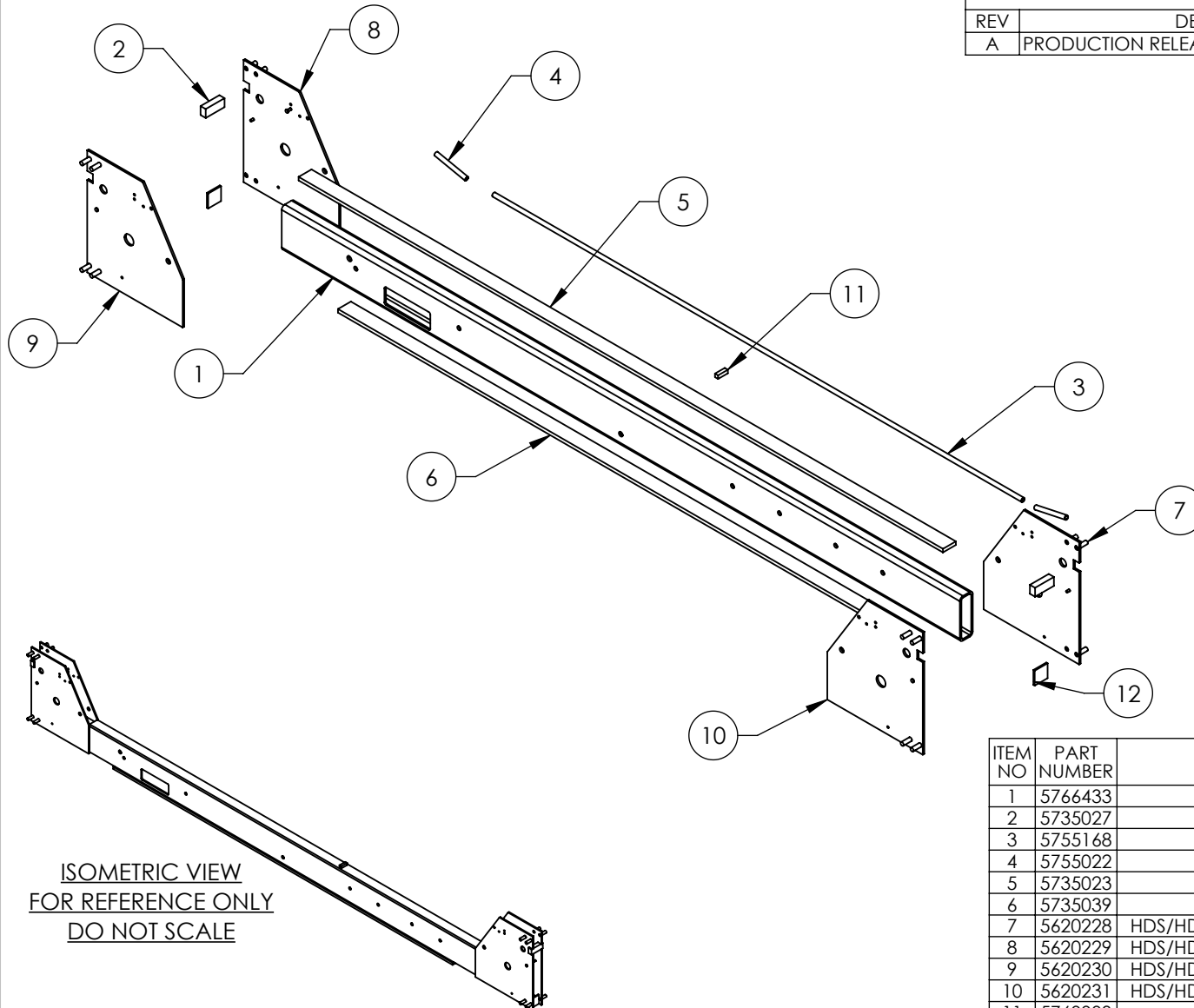
BendPak
1645 LEMONWOOD DR.
SANTA PAULA, CA 93060

TITLE: HDS-14 CROSSTUBE
WELDMENT, LARGE WINDOW

SIZE DWG. NO.	REV
A 5601814	A

SCALE: 1:20 SHEET 1 OF 3

REVISION				
REV	DESCRIPTION	DATE	EDITED BY	ECO#
A	PRODUCTION RELEASE, DERIVED FROM 5600923	05/02/2023	TM	01414



ISOMETRIC VIEW
FOR REFERENCE ONLY
DO NOT SCALE

ITEM NO	PART NUMBER	DESCRIPTION	QTY	REV
1	5766433	HDS-14 CROSSTUBE, SMALL WINDOW	1	A
2	5735027	CROSSTUBE SAFETY BLOCK	2	B
3	5755168	AIR LINE TROUGH Ø13.5 x Ø9.5 x 2050	1	A
4	5755022	AIR LINE TROUGH Ø13.5 x Ø9.5 x 121	2	B
5	5735023	HD-14 SERIES TOP CROSS TUBE STRAP	1	D
6	5735039	HD/HDSO-14 BOTTOM CROSS TUBE STRAP	1	D
7	5620228	HDS/HDSO-14 CROSSTUBE END PLATE SUBWELDMENT #1	1	K
8	5620229	HDS/HDSO-14 CROSSTUBE END PLATE SUBWELDMENT #2	1	J
9	5620230	HDS/HDSO-14 CROSSTUBE END PLATE SUBWELDMENT #3	1	H
10	5620231	HDS/HDSO-14 CROSSTUBE END PLATE SUBWELDMENT #4	1	J
11	5760003	D4-12, HD-12/14 RAMP STOP	1	C
12	5735073	D4-12, HD-7/9, HDS/HDSO-14 CARRIAGE TIE BLOCK	2	C

WHERE USED
HDS-14 SERIES

- NOTE: UNLESS OTHERWISE SPECIFIED.**
- REFER TO MODEL FOR ADDITIONAL INFORMATION
 - BREAK AND DEBURR ALL SHARP EDGES 0.3mm
 - REMOVE ALL WELD SPLATTER
 - DIMENSIONS SHOWN ARE AFTER PAINTING
 - PAINT GRAY (RAL-7024) 20% GLOSS

NEXT ASSEMBLY
5216148

DO NOT SCALE DRAWING

NAME	DATE
DRAWN TM	05/02/2022
CHECKED OR	06/06/2022

DIMENSIONS ARE IN MM
TOLERANCES:
0. = ±1.5
0.0 = ±0.5

SURFACE FINISH 1.6 ISO R_a μm
FOR MACHINED SURFACES
UNLESS OTHERWISE SPECIFIED

THIRD ANGLE PROJECTION

PROPRIETARY AND CONFIDENTIAL
THE INFORMATION CONTAINED IN THIS DRAWING IS
THE SOLE PROPERTY OF BENDPAK INC. ANY
REPRODUCTION IN PART OR AS A WHOLE WITHOUT
THE WRITTEN PERMISSION OF BENDPAK INC. IS
PROHIBITED.

1645 LEMONWOOD DR.
SANTA PAULA, CA 93060

TITLE:
HDS-14 CROSSTUBE
WELDMENT, SMALL WINDOW

SIZE DWG. NO.	REV
A 5601826	A

SCALE: 1:18

SHEET 1 OF 3

PART SPECIFICATION FORM (STANDARD)

BENDPAK Number:	5900161
MRP Description:	HDS-14/14X INSTALLATION MANUAL
Date:	04/28/2022
ECO :	--

1. Engineering Specification

Application:

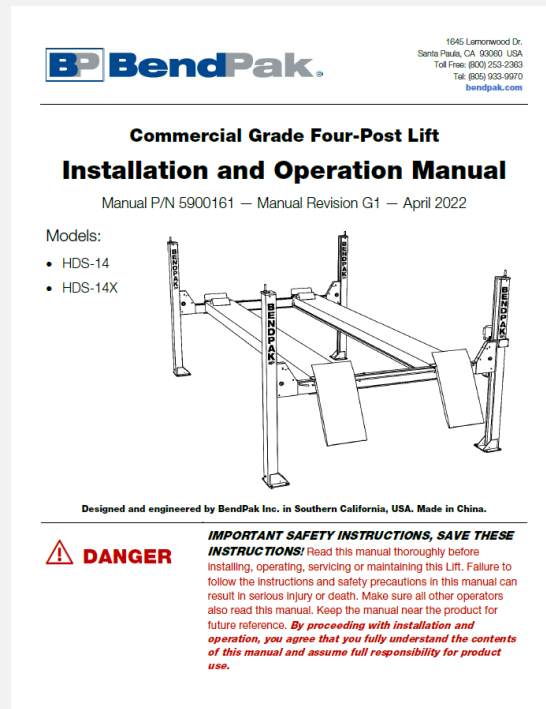
INSTALLATION MANUAL

Detailed Description:

Print Settings

Unless otherwise specified, use these settings for printing BendPak manuals:

Size:	A4 (210 to 297 mm), 8.5 by 11 inches (216 to 279 mm), or between
Color:	Black and White
Binding:	Saddle Stitched
Paper:	100 to 120 gsm (27 to 32 pound), uncoated



2. Vendor Information (Or for Reference)

Approved Vendor	Vendor Part #	Contact #	Preferred Vendor
1)			
OR BENDPAK ENGINEERING APPROVED EQUIVALENT			

4 Post Lifts Product Decal Positioning



CLEAR ADHESIVE PET DOES NOT PRINT YELLOW.

Total of 6

PN 5905311

BPK Post Branding Decal-Large.pdf:

Size: 4.25"W x 38"H

Material: 4 Mil Clear Adhesive PET

Finish: Matte Overlaminated (No gloss)

Print Process: Silk Screen, 85 line-screen
 (Yellow color in file represents what should be clear PET material and SHOULD NOT print as Yellow ink. White area in file represents Opaque White ink.)

Lamination: Clear laminate non-glare medium matte over-laminate (No gloss) for abrasion, chemical and ultra violet protection.

A

⚠ DANGER

VISUALLY CONFIRM THAT ALL PRIMARY SAFETY LOCKS ARE ENGAGED BEFORE ENTERING WORK AREA.

Suspension components on this lift are intended to raise and lower lift; they are NOT load-holding devices. Do not get under an elevated lift until visual confirmation is made that the lift is engaged on its Safety Locks. Refer to the manual for proper Safety Lock procedures and additional instructions.

VÉRIFIER VISUELLEMENT QUE TOUS LES VERROUS DE SÉCURITÉ PRIMAIRES SONT ENGAGÉS AVANT D'ENTRER DANS LA ZONE DE TRAVAIL.

Les composants de suspension de cet élévateur sont destinés à lever et abaisser l'ascenseur; ce ne sont PAS des dispositifs de maintien de la charge. Ne sautez pas sous un ascenseur surélevé avant d'avoir obtenu la confirmation visuelle que l'ascenseur est engagé sur ses serrures de sécurité. Reportez-vous au manuel pour connaître les procédures de verrouillage de sécurité et les instructions supplémentaires.

⚠ WARNING

Wire Rope Inspection and Maintenance

- Replace lifting cables if wear or damage is evident, such as excessive broken strands, kinks, deformation, or frayed wire sections.
- Keep wire rope in a well-lubricated condition at all times. Wire rope is only fully protected when each wire strand is lubricated, both internally and externally. Excessive wear shortens the life of wire rope. Use wire rope lubricant that penetrates to the core of the rope and provides long-term lubrication between individual strands. Lubrication should be done at least every three months during normal operation.
- All sheaves and guide rollers in contact with the moving wire rope should be checked regularly to ensure proper and lubricated to ensure they run freely. This should be done at least every three months. Safety terminals on cables should be checked and lubricated when loading/unloading. For all sheaves and/or guide rollers, use 90-WT gear oil or similar heavy lubricant applied by a spray method including pump sprays, aerosols, brush, hand, and/or swabbing.

Failure to read, understand, and follow these instructions may cause death or serious injury. Read and understand these instructions before using lift.

⚠ ATTENTION

Inspection et maintenance des câbles

- Remplacez les câbles de levage si l'usure ou des dommages sont évidents, tels que des brins cassés, des fentes, des déformations ou des zones de bris excessives.
- Gardez le câble métallique bien lubrifié en tout temps. Le câble métallique n'est entièrement protégé que lorsque chaque brin est lubrifié, à la fois à l'intérieur et à l'extérieur. Une usure excessive raccourcit la durée de vie du câble. Utilisez un lubrifiant pour câble métallique qui pénètre dans le noyau du câble et assure une lubrification à long terme entre les brins. La lubrification doit être effectuée au moins tous les trois mois en fonctionnement normal.
- Toutes les poulies et les galets de guidage en contact avec le câble métallique en mouvement doivent être vérifiés à des intervalles réguliers en regardant les traces de usure et lubrifiés pour un bon fonctionnement. Assurez-vous que les câbles sont bien lubrifiés à l'intérieur et à l'extérieur. Une usure excessive raccourcit la durée de vie du câble. Utilisez un lubrifiant pour câble métallique qui pénètre dans le noyau du câble et assure une lubrification à long terme entre les brins. La lubrification doit être effectuée au moins tous les trois mois en fonctionnement normal.

Lisez et comprenez ces instructions avant d'utiliser l'ascenseur. Ne pas lire, comprendre et suivre ces instructions peut provoquer des blessures graves, voire mortelles.

IMPORTANT OPERATION / MAINTENANCE INSTRUCTIONS - PLEASE READ

TO RAISE LIFT

- Position vehicle tires at the center of each post.
- Set parking brake on one wheel close to the vehicle position.
- Before raising vehicle, be sure all personnel are clear of lift and surrounding area. Do not enter the lift's work area.
- Raise lift to desired height by pressing pushbutton on power unit.
- Monitor visual contact with vehicle and surrounding area at all times while raising lift.
- Stop immediately if load shifts or becomes unlevel.
- After vehicle is raised to desired height, lower lift into the raised Safety Lock. Do not allow cables to become excessively slack.
- Always make sure all Primary Safety Locks are engaged before entering work area.

TO LOWER LIFT

- Make sure all personnel, tools, and equipment are clear of lift and surrounding area.
- Raise lift by pressing pushbutton on power unit. Elevate lift at least two inches to allow clearance for vehicle to be lowered.
- Press and hold Pushbutton to lower.
- Lower vehicle by also pressing and holding Lowering Handle.
- When lowering lift, make sure that all personnel and objects are kept clear.
- Always keep in mind the weight of the vehicle being lowered.
- Always make sure safety locks are disengaged if one of the locks inadvertently engages or does not lift vehicle when directed during normal type of work.

REQUIRED MONTHLY MAINTENANCE

- Consult operation manual for factory recommended maintenance.
- Adjust lift cables to ensure lift spans level and Safety Locks engage automatically.
- Check all electrical connections, bolts and pins to ensure proper mounting.
- Visually inspect Safety Locks for proper operation.
- Visually inspect concrete. Do not use lift if concrete shows signs of breakage or other deterioration.
- Inspect all anchor bolts, tighten as necessary.
- Check posts for expansion and gaps.
- Inspect all bolts and other fasteners to make sure they are properly secured.
- Make a visual inspection of all moving parts and check for signs of excessive wear.
- Replace all faulty parts before lift is put back into operation.

⚠ WARNING **⚠ ATTENTION**

- **Warning:** If anchor bolts are loose, or if expansion of the lift is noticeable, do not use lift. It is not safe under these conditions.
- **Warning:** Never operate the lift with people or equipment under it.
- **Warning:** Never exceed rated capacity.
- **Warning:** Always ensure Safety Locks are engaged before any attempt is made to work on your vehicle.
- **Warning:** Do not leave lift elevated unless engaged on Safety Locks.
- **Warning:** Do not permit the vehicle to rest on wet floor. Moisture damage caused by water on wet floor is not covered by the warranty.
- **Attention:** Le système d'ancrage des poteaux doit être vérifié et les boulons doivent être serrés.
- **Attention:** Ne jamais dépasser la capacité nominale.
- **Attention:** Ne laissez jamais l'ascenseur surélevé sans les verrous de sécurité.
- **Attention:** Ne laissez jamais l'ascenseur surélevé sur un sol mouillé. Les dommages au sol dus à l'humidité ne sont pas couverts par la garantie.

PN 5905556

4-Post Safety-Operation Decal FRE-ENG.pdf:

Size: 4"W x 24"H

Material: 4 Mil. Permanent White Adhesive Vinyl

Ink: U.V. protected CMYK 2/C Process
Finish: Matte Overlaminated (No gloss)

Print Process: Offset Lithography - 200 line-screen or 300 p.p.i. for digital

Lamination: Clear laminate non-glare medium matte over-laminate (No gloss) for abrasion, chemical and ultra violet protection.

IMPORTANT: Please use materials as instructed

C

⚠ CAUTION **⚠ CAUTION**

Lift to be used by trained operator ONLY. **Authorized personnel only in lift area.**

The messages and photographs shown are generic in nature and are meant to generally represent hazards common to all automotive lifts regardless of specific style.

Funding for the development and validation of these labels was provided by the Automotive Lift Institute, PO Box 85 Cortland, NY 13045.

Replacement label sets may be obtained from the original lift manufacturer and ALI's member companies. They are protected by copyright. www.autolift.org © 2012 by ALI, Inc. ALI198,2009

⚠ WARNING **⚠ WARNING**

Clear area if vehicle is in danger of falling. **Remain clear of lift when raising or lowering vehicle.**

⚠ WARNING **⚠ WARNING**

Keep clear of pinch points when lift is moving. **Keep feet clear of lift while lowering.**

⚠ WARNING **⚠ WARNING**

Do not override self-closing lift controls. **Check wheel to prevent vehicle movement.**

The messages and photographs shown are generic in nature and are meant to generally represent hazards common to all automotive lifts regardless of specific style.

Funding for the development and validation of these labels was provided by the Automotive Lift Institute, PO Box 85 Cortland, NY 13045.

Replacement label sets may be obtained from the original lift manufacturer and ALI's member companies. They are protected by copyright. www.autolift.org © 2012 by ALI, Inc. ALI198,2009

NOTICE **NOTICE**

Read operating and safety manuals before using lift. **Proper maintenance and inspection is necessary for safe operation.**

NOTICE

Do not operate a damaged lift.

The messages and photographs shown are generic in nature and are meant to generally represent hazards common to all automotive lifts regardless of specific style.

Funding for the development and validation of these labels was provided by the Automotive Lift Institute, PO Box 85 Cortland, NY 13045.

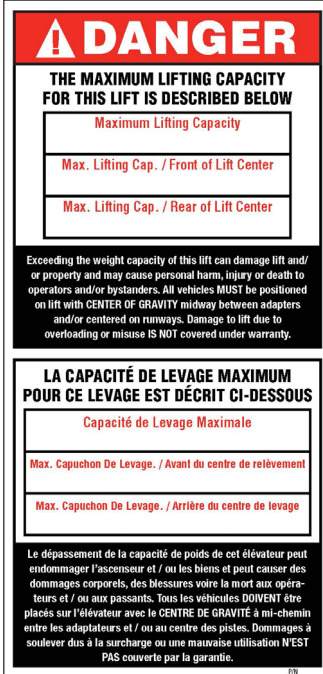
Replacement label sets may be obtained from the original lift manufacturer and ALI's member companies. They are protected by copyright. www.autolift.org © 2012 by ALI, Inc. ALI198,2009

PN 5905103

ALI_4_Post_labels.pdf:
(Order Labels from ALI)

4 Post Lifts Product Decal Positioning

***D**



***Max. Cap. Danger ENG-FRE.pdf:**

Size: 4"W x 8.5"H

Material: 4 Mil. Permanent White Adhesive Vinyl

Ink: U.V. protected CMYK 2/C Process

Finish: Matte Overlamine (No gloss)

Print Process: Offset Lithography - 200 line-screen or 300 p.p.i. for digital

Lamination: Clear laminate non-glare medium matte over-lamine (No gloss) for abrasion, chemical and ultra violet protection.

***E**



***NRTL_Lifting_Cap_ENG-FRE_.pdf:**

Size: 4.5"W x 3.25"H

Material: 4 Mil. Permanent White Adhesive Vinyl

Ink: U.V. protected CMYK 2/C Process

Finish: Matte Overlamine (No gloss)

Print Process: Offset Lithography - 200 line-screen or 300 p.p.i. for digital

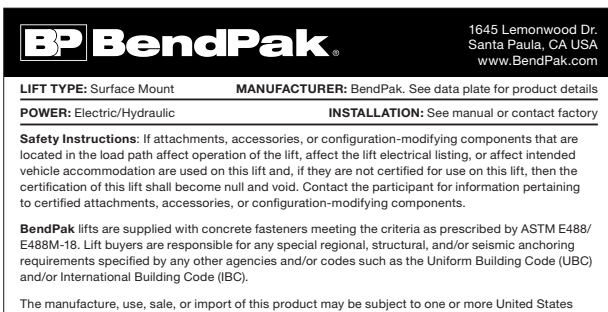
Lamination: Clear laminate non-glare medium matte over-lamine (No gloss) for abrasion, chemical and ultra violet protection.

- P/N 5905401 - Max Cap. Danger 7k
- P/N 5905695 - Max. Cap. Danger 7500
- P/N 5905402 - Max Cap. Danger 9k
- P/N 5905557 - Max. Cap. Danger 14K
- P/N 5905406 - Max Cap. Danger 18k
- P/N 5905407 - Max. Cap. Danger 27K
- P/N 5905408 - Max. Cap. Danger 35K
- P/N 5905068 - Max. Cap. Danger 37K
- P/N 5905409 - Max. Cap. Danger 40K

***DEPENDS ON LIFT MODEL AND CAPACITY**

- P/N 5905645 - NRTL_Lifting_Cap_Label_7K
- P/N 5905700 - NRTL_Lifting_Cap_Label_7500
- P/N 5905650 - NRTL_Lifting_Cap_Label_9k
- P/N 5905665 - NRTL_Lifting_Cap_Label_14k
- P/N 5905675 - NRTL_Lifting_Cap_Label_18k
- P/N 5905680 - NRTL_Lifting_Cap_Label_27K
- P/N 5905685 - NRTL_Lifting_Cap_Label_35K
- P/N 5905067 - NRTL_Lifting_Cap_Label_37K
- P/N 5905690 - NRTL_Lifting_Cap_Label_40K

F



Product_Data_Label_5905940-New.pdf: PN 5905940

Size: 4.5"W x 2.3"H

Material: 4 Mil. Permanent White Adhesive Vinyl

Ink: U.V. protected CMYK 2/C Process

Finish: Matte Overlamine (No gloss)

Print Process: Offset Lithography - 200 line-screen or 300 p.p.i. for digital

Lamination: Clear laminate non-glare medium matte over-lamine (No gloss) for abrasion, chemical and ultra violet protection.

G



ALI_Notice_Label.jpg

PN 5905377

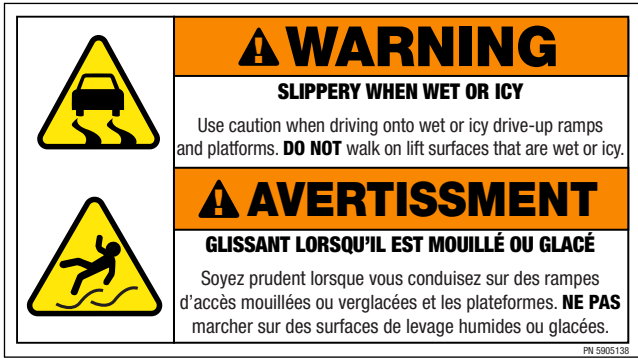
Size: 3"W x 1.75"H

(Order Label from ALI)

IMPORTANT: Please use materials as instructed

4 Post Lifts Product Decal Positioning

H



Slipper_When_Wet_Label-5905138.pdf: PN 5905138

Size: 4.5"W x 2.5"H

Material: 4 Mil. Permanent White Adhesive Vinyl

Ink: U.V. protected CMYK 2/C Process

Finish: Matte Overlamine (No gloss)

Print Process: Offset Lithography - 200 line-screen or

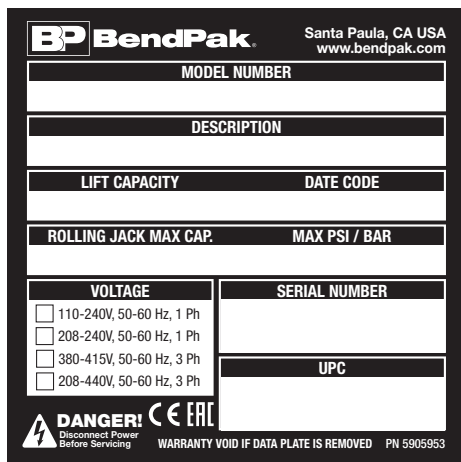
300 p.p.i. for digital

Lamination: Clear laminate non-glare medium matte over-laminate (No gloss) for abrasion, chemical and ultra violet protection.

I



J



PN 5905953

2017_Serial_Tag-D.jpg:

Size: 3"W x 3"H

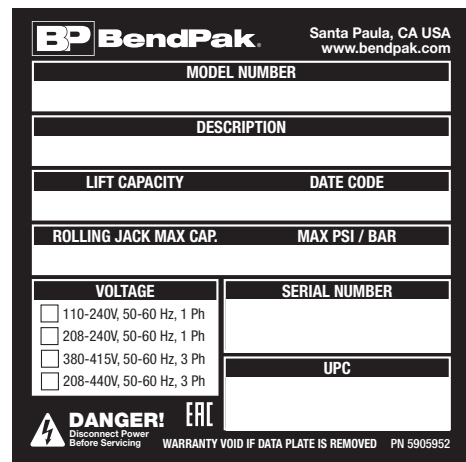
Material: 2 Mil. Matte Silver Polyester (Flex-PSE)

Print using thermal transfer printer with resin ribbon

Ink: 1 Color-Black

CE APPROVED LIFTS ONLY

K



PN 5905952

2017_Serial_Tag-C.jpg:

Size: 3"W x 3"H

Material: 2 Mil. Matte Silver Polyester (Flex-PSE)

Print using thermal transfer printer with resin ribbon

Ink: 1 Color-Black

NON-CE APPROVED LIFTS ONLY

IMPORTANT: Please use materials as instructed

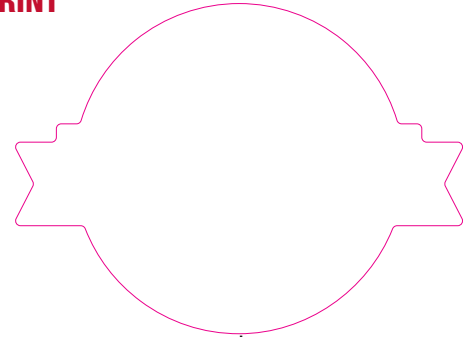
4 Post Lifts Product Decal Positioning

L



GRAY DOES NOT PRINT

PN 5906044



DIE-CUT LINE
DOES NOT PRINT

American_Owned_50_Years_Logo.pdf:

Trim: 4"W x 3"H

Material: 4 Mil. Permanent White Adhesive Vinyl

Ink: U.V. protected CMYK 4/C Process

Finish: Matte Overlamine (No Gloss)

Print Process: Offset Lithography - 200 line-screen or 300 p.p.i. for digital

Lamination: Clear Laminate non-glare medium matte over laminate for abrasion, chemical, and ultra violet protection

M

CALIFORNIA PROPOSITION 65

⚠ WARNING ⚠

WARNING! This product can expose you to chemicals including styrene and vinyl chloride which are on the list of over 900 chemicals identified by the State of California to cause cancer, birth defects or reproductive harm. ALWAYS use this product in accordance with the manufacturer's instructions.

For more information, go to www.p65warnings.ca.gov.

PN 5905775

Prop_65_Label.pdf:

Size: 1.5"W x 1.5"H

Material: 4 Mil. Permanent White Adhesive Vinyl

Ink: U.V. protected CMYK 2/C Process

Finish: Matte Overlamine (No gloss)

Print Process: Offset Lithography - 200 line-screen or 300 p.p.i. for digital

Lamination: Clear laminate non-glare medium matte over-lamine (No gloss) for abrasion, chemical and ultra violet protection.

PN 5905775

IMPORTANT: Please use materials as instructed

4 Post Lifts Product Decal Positioning

**SEE NEXT PAGE
FOR LABEL
PLACEMENT HEIGHT**

****FOR ALL APPROVED
LIFTS ONLY**

M, E, C

**Back of Post
(Top to Bottom)**

**G, D, I,
J or K, F**

**Front of Post
(Top to Bottom)**

B
Side of Post

A
(Front & Back of post)

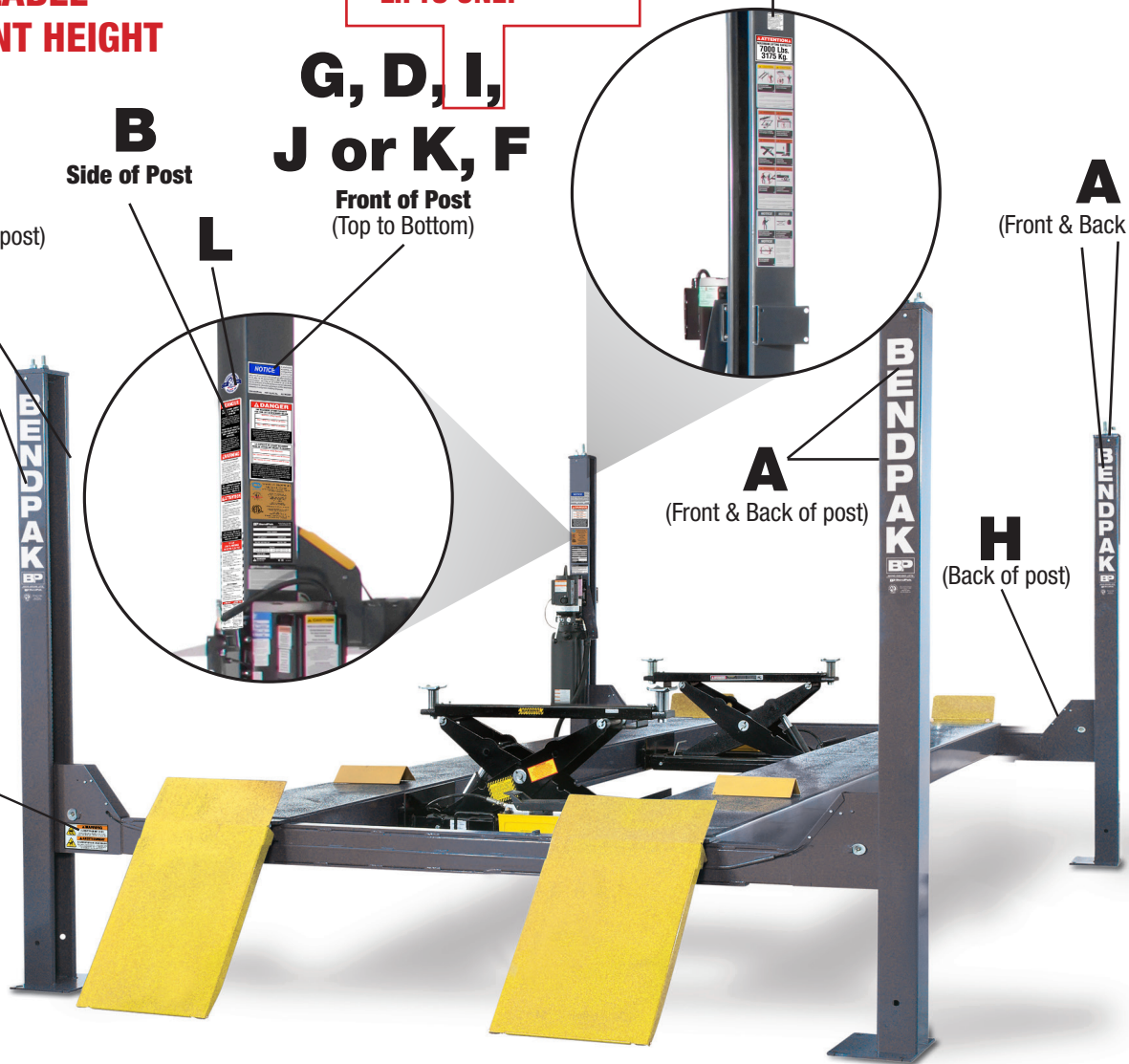
L

A
(Front & Back of post)

A
(Front & Back of post)

H
(Back of post)

H
(Also on other side of lift)



4 Post Lifts Product Decal Positioning

Views of Powerside Post

BACK OF POST

SIDE OF POST

FRONT OF POST

